

The many assembly histories of massive void galaxies as revealed by integral field spectroscopy

Amelia Fraser-McKelvie,^{1,2,3★} Kevin A. Pimbblet,^{1,2,3} Samantha J. Penny⁴
and Michael J. I. Brown^{1,2}

¹*School of Physics and Astronomy, Monash University, Clayton, Victoria 3800, Australia*

²*Monash Centre for Astrophysics (MoCA), Monash University, Clayton, Victoria 3800, Australia*

³*Department of Physics and Mathematics, E. A. Milne Centre for Astrophysics, University of Hull, Cottingham Road, Kingston-upon-Hull HU6 7RX, UK*

⁴*Institute of Cosmology and Gravitation, University of Portsmouth, Dennis Sciama Building, Burnaby Road, Portsmouth PO1 3FX, UK*

Accepted 2016 March 18. Received 2016 March 15; in original form 2015 December 6

ABSTRACT

We present the first detailed integral field spectroscopy study of nine central void galaxies with $M_{\star} > 10^{10} M_{\odot}$ using the Wide Field Spectrograph to determine how a range of assembly histories manifest themselves in the current day Universe. While the majority of these galaxies are evolving secularly, we find a range of morphologies, merger histories and stellar population distributions, though similarly low $H\alpha$ -derived star formation rates ($< 1 M_{\odot} \text{ yr}^{-1}$). Two of our nine galaxies host active galactic nuclei, and two have kinematic disruptions to their gas that are not seen in their stellar component. Most massive void galaxies are red and discy, which we attribute to a lack of major mergers. Some have disturbed morphologies and may be in the process of evolving to early-type thanks to ongoing minor mergers at present times, likely fed by tendrils leading off filaments. The diversity in our small galaxy sample, despite being of similar mass and environment means that these galaxies are still assembling at present day, with minor mergers playing an important role in their evolution. We compare our sample to a mass and magnitude-matched sample of field galaxies, using data from the Sydney-AAO Multi-object Integral field spectrograph galaxy survey. We find that despite environmental differences, galaxies of mass $M_{\star} > 10^{10} M_{\odot}$ have similarly low star formation rates ($< 3 M_{\odot} \text{ yr}^{-1}$). The lack of distinction between the star formation rates of the void and field environments points to quenching of massive galaxies being a largely mass-related effect.

Key words: galaxies: evolution – galaxies: general – galaxies: kinematics and dynamics – galaxies: stellar content.

1 INTRODUCTION

Galaxy evolutionary mechanisms can broadly be split into two categories: environmentally driven and mass driven effects. The former category include processes such as galaxy harassment (e.g. Moore et al. 1996), ram pressure stripping (Gunn & Gott 1972), viral shock heating (e.g. Dekel & Birnboim 2006; Cen 2011) and mergers (Toomre & Toomre 1972), whilst the latter include secular processes such as active galactic nucleus (AGN) feedback (e.g. Croton et al. 2006) and mass quenching (e.g. Kauffmann et al. 2003; Geha et al. 2012). Generally it is difficult to separate these processes throughout a galaxy’s lifetime, especially in high-density environments where many of these mechanisms act on a galaxy simultaneously.

Examining the low-density regions of the Universe offers an unparalleled view into galaxy evolution in isolation. Filling the space between filaments and clusters, cosmic voids are spatially the largest regions of the Universe (e.g. Aragón-Calvo, van de Weygaert & Jones 2010), with the lowest mean galaxy density (10–20 per cent of the mean cosmic density; Pan et al. 2012). Typical void regions are roughly spherically symmetric, or prolate spheroids (Platen, van de Weygaert & Jones 2008), with mean effective radii $17 h^{-1} \text{ Mpc}$ (Pan et al. 2012).

Wide field spectroscopic surveys such as the Sloan Digital Sky Survey (SDSS; Abazajian et al. 2009) delineate the large-scale structure of the cosmic web and allow the properties of the void galaxy population to be studied in detail. Observationally, Pan et al. (2012) created a catalogue of voids from the SDSS Data Release 7 (DR7) based on a nearest neighbour technique that was employed by Hoyle & Vogeley (2004) for the 2-degree Field Galaxy Redshift Survey. These studies confirm that the few galaxies located within voids

* E-mail: amelia.mckelvie@monash.edu

typically lie close to the edges, leaving galaxies in central regions extremely isolated.

The low density of cosmic void regions allow galaxies to evolve in relative solitude, removing many environmental effects. It is for this reason voids are excellent laboratories to study the secular effects of galaxy and halo mass on galaxy evolution. Many studies have found a strong dependence on environment for several galaxy properties, particularly in voids. When compared to galaxies in denser environments, void galaxies are thought to possess higher specific star formation rates (SFRs; e.g. Grogin & Geller 2000; Park et al. 2007; von Benda-Beckmann & Müller 2008; Ricciardelli et al. 2014; Liu et al. 2015), and are on average bluer and discier than similarly luminous galaxies in denser environments (e.g. Rojas et al. 2004, 2005; Hoyle et al. 2005; Deng, He & Wu 2008; Hoyle, Vogeley & Pan 2012; Moorman et al. 2015). These characteristics are generally attributed to a limited opportunity for interactions due to their relative isolation, leaving more gas available for star formation. Moorman et al. (2016) finds void regions are particularly nurturing for dwarf galaxies.

While a consistent picture of a bluer void galaxy population has been presented above, recent work instead finds very little difference between galaxies in voids and those in structure, especially when a multiwavelength approach is taken (e.g. Beygu et al. 2016). Penny et al. (2015) show no difference in the mid-infrared (IR) colour of 592 galaxies located in voids and an analogous sample of field galaxies; a wide spread in recent star-forming activity is found throughout both populations. Optically red void galaxies display a range of mid-IR colour, suggesting dust-obscured star formation or star formation occurring on the outskirts of the galaxies, missed by single fibre spectroscopy. This range of mid-IR colour suggests a variety of assembly histories must exist in the void galaxy population. This finding has been backed up by smaller, multiwavelength surveys such as Sage et al. (1997), who detect CO emission from four Bootes void galaxies that is comparable to that seen from interacting field galaxies. Beygu et al. (2013) and Das et al. (2015) also detect molecular gas in void regions, inferring SFRs and dynamical activity similar to that of galaxies in denser environments. Detailed, spatial studies of these galaxies are needed to locate star-forming regions within void galaxies, the extent of this star formation, and the mechanisms by which it is occurring.

Massive void galaxies constitute an unique population as their high luminosity permits detailed studies into galaxy kinematics and merger histories over relatively short integration times. The most massive void galaxies are the central galaxy of their dark matter halo and have masses $M_* > 10^{10} M_\odot$, similar to that of brightest group galaxies or small brightest cluster galaxies (BCGs; e.g. Oliva-Altamirano et al. 2014). Their wide spread of current day star formation, as shown in Fig. 1, means that there must be a mixture of mass growth processes at play over a range of time-scales. Simulations predict that mass is accumulated through continued star formation fed by filaments of gas accreting on to both isolated and central group void galaxies (e.g. Kreckel et al. 2012; Beygu et al. 2013). This is confirmed observationally by Penny et al. (2015), who find the dominant morphology of high-mass void galaxies is discy with many red spirals (e.g. Masters et al. 2010; Bonne et al. 2015).

At masses greater than $M_* > 10^{10} M_\odot$ the mass assembly histories of galaxies are increasingly dominated by major mergers (Kauffmann et al. 2003; Baldry et al. 2004), creating early-type galaxies that have quenched by current times. This apparent disparity in formation history can be resolved by spatial mapping of these massive void galaxies. Are these galaxies evolving secularly as their

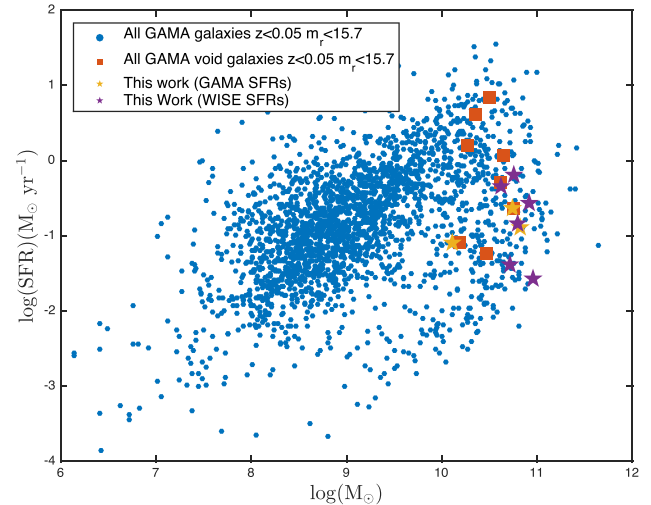


Figure 1. The $H\alpha$ -derived star-forming main sequence of all GAMA galaxies with $z < 0.05$. Blue points are all GAMA galaxies, orange are isolated and central void galaxies with $M > 10^{10} M_\odot$ from the catalogue of Penny et al. (2015). Yellow points are GAMA galaxies that were observed for this work. Purple points were also observed for this work, but GAMA SFRs were not available, so *WISE* W3 12 μm -derived SFRs using the relation of Cluver et al. (2014) were used instead. The isolated and central galaxies within voids cover a wide range of SFRs, extending through both the red sequence and blue cloud, suggesting multiple assembly histories of these galaxies.

isolated nature would suggest, or have enough interactions occurred that they have morphologically (and kinematically) transformed?

Single fibre spectroscopy often catches only old stellar populations at the heart of massive galaxies, misdiagnosing them as passive, though mid-IR photometry suggests these galaxies are not as quenched as they appear (e.g. Penny et al. 2015). In a wide-field multi-object redshift survey, each galaxy is targeted with just one fibre. As we show in Section 2.1, for massive low-redshift galaxies, this fibre will only capture light from the central region of a galaxy, potentially missing a star-forming disc.

Integral field spectroscopy (IFS) allows the features of a galaxy to be spatially mapped by recording many spectra of the same object simultaneously. Properties such as stellar and gas kinematics, along with areas of star formation and emission line regions can be mapped out to several effective radii, conveying a comprehensive, spatially resolved picture of a galaxy. Traditional single object IFS units are able to image one galaxy in extreme detail, though are observationally expensive. The advent of multi-object IFS surveys such as the Sydney-AAO Multi-object Integral field spectrograph (SAMI) galaxy survey (Croom et al. 2012), and Mapping Nearby Galaxies with APO (MaNGA; Bundy et al. 2015) will allow galaxy populations to be examined spatially with number statistics like never before. These surveys are currently in their infancy, and will take several more years to build up statistically significant samples targeting specific galaxy sub-populations. It may take some time for a population of rare objects such as massive, isolated void galaxies to be observed.

We exploit this niche by targeting the small sub-population of massive void central galaxies using the Wide Field Spectrograph (WiFeS; Dopita et al. 2007, 2010) single-object IFS instrument for a detailed study of their properties. In this study we aim to identify and classify any morphological, kinematic or spectroscopic similarities in massive central void galaxies and compare them to a mass-matched sample of field galaxies.

We present IFS observations of nine massive isolated and central void galaxies along with a comparison sample of nine field galaxies to determine the relative contribution of environmental and mass effects to their current day appearance. The paper is organized as follows: in Section 2, we define the Galaxy And Mass Assembly (GAMA) massive isolated and central void galaxy population and analyse any bias in our target selection sample. In Section 3 we describe the observations and data reduction, and in Section 4 we present the stellar and gas kinematic derivations. Section 5 describes the SFRs and in Sections 6 and 7, we present our results along with a comparison to a mass and magnitude-matched sample of field galaxies from the SAMI galaxy survey. Throughout this paper we use a flat Λ cold dark matter (Λ CDM) cosmology with $\Omega_\Lambda = 0.7$, $\Omega_M = 0.3$ and $H_0 = 70 \text{ km s}^{-1}$. A Salpeter (1955) initial mass function (IMF) is used for all SFRs and stellar masses presented in this work unless stated otherwise.

2 VOID GALAXY TARGET SELECTION

We draw our central and isolated massive void galaxy targets from the GAMA (Driver et al. 2011) survey void catalogue of Penny et al. (2015). The catalogue identifies all galaxies within the GAMA equatorial survey regions located in the SDSS voids defined by Pan et al. (2012) using the Void Finder algorithm out to $z \sim 0.1$.

The Void Finder algorithm is described in Hoyle & Vogeley (2002) and uses a nearest neighbour approach to find statistically significant cosmic voids in volume limited wide-field redshift survey data. The method takes galaxies located in field or wall regions and computes the third nearest neighbour distance, d_3 , for each galaxy. All galaxies with $d_3 > 6.3 h^{-1} \text{ Mpc}$ are considered as potential void galaxies and removed from the sample. What remains are potential wall galaxies, which are mapped and empty spheres grown between the wall regions. If a sphere can be created with radius $> 10 h^{-1} \text{ Mpc}$, the region is considered a void, and any galaxies located within this void region are void galaxies. Non-spherical voids are created by the addition of two neighbouring regions if there is sufficient overlap. This method has proven robust on both observational and simulated galaxies and dark matter. Average void density was found to be < 20 per cent of the cosmic mean at void edges, dropping to ~ 10 per cent in central regions.

While the Pan et al. (2012) catalogue contains only galaxies with magnitudes brighter than $M_r = -20.09$, Penny et al. (2015) include all GAMA galaxies brighter than $M_r = -18.4$. This fainter magnitude limit includes more low-mass and low-surface brightness galaxies, and also decreases the size of the void regions as fainter, less-clustered galaxies extend further into void regions from surrounding filaments. For this reason, only galaxies out to $0.75 R_{\text{void}}$ are included, ensuring isolation from large-scale structure. This gives us confidence that our void galaxies are indeed located in bona fide void regions, and not surrounding filamentary regions. We check our void galaxies are in sufficiently underdense regions of the cosmic web by finding the 5th nearest neighbour distance (d_5) and surface density (σ_5) of all galaxies in the void sample using the Brough et al. (2013) environmental measures catalogue, as shown in Fig. 2. For void galaxies within the GAMA G15 field, we find a median environmental density of $\sigma_5 = 0.0745 \text{ Mpc}^{-2}$, compared to $\sigma_5 = 0.319 \text{ Mpc}^{-2}$ for all galaxies in GAMA with $z < 0.1$. We confirm that the galaxies in our void sample are located in underdense regions of the Universe.

We make a further mass cut of $\log(M_*) > 10^{10} M_\odot$ and use the GAMA galaxy group catalogue of Robotham et al. (2011) to select only isolated and central group galaxies in our sample and

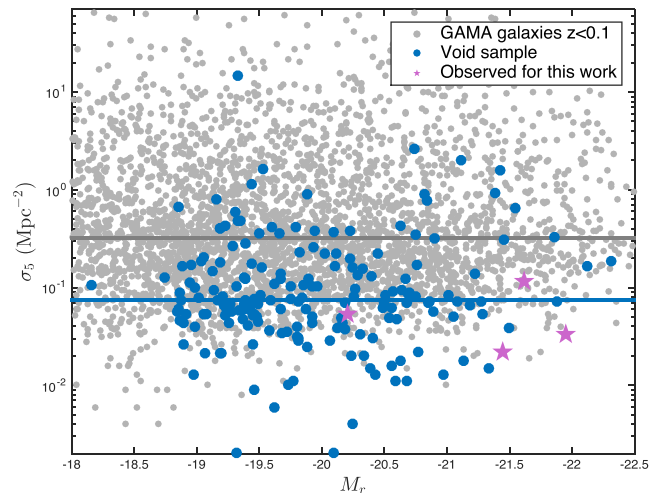


Figure 2. The fifth nearest neighbour surface density, σ_5 , for the galaxies in the Penny et al. (2015) void galaxy catalogue with matches to the environmental measures catalogue of Brough et al. (2013, blue points, with a blue median line of 0.0745 Mpc^{-2}). All GAMA galaxies with $z < 0.1$ in this catalogue are shown as grey points with a grey median line value of 0.319 Mpc^{-2} , and those observed for this work in the GAMA catalogue are shown as pink stars. On average, the void galaxies in our sample (and all those observed) are located in regions of lower environmental density than galaxies in all environments in GAMA.

remove interlopers. Only galaxies with publicly available GAMA SFRs (Hopkins et al. 2013) and stellar masses (Taylor et al. 2011) were included in this work.

The final sample of massive void galaxies comprises 76 isolated void galaxies, and 37 central group galaxies residing in groups of five members or less, all with $z < 0.1$. These galaxies are all the most massive objects in their dark matter haloes. We draw our observing targets from this sample, and supplement with SDSS galaxies of the same constraints outside of the GAMA survey right ascension limits due to observing time constraints. We perform the additional magnitude cut of $m_r < 15.7$ to reduce integration times and maximize signal to noise (S:N). At our average redshift of $z \sim 0.03$, this corresponds to an absolute magnitude of $M_r = -20$. Table 1 lists all galaxies observed for this work. It is important to note that while our target galaxies have been drawn from the very central regions of voids, this does not mean they are in regions free of large-scale structure; tendrils and even filaments of galaxies have been shown to extend deep into voids. Alpaslan et al. (2014) showed that the deeper the magnitude cut, the more structure was revealed in voids, stating as few as 25 per cent of the original void galaxies defined by Pan et al. (2012) are actually isolated.

2.1 Motivation – Are the reddest of massive void galaxies secularly evolving?

Despite their similar environmental conditions, void galaxies do not constitute an homogeneous population. Fig. 1 shows the star-forming ‘main sequence’ for all GAMA survey galaxies with $z < 0.05$. Void galaxies from the Penny et al. (2015) sample above our mass cut of $M_* > 10^{10} M_\odot$ and apparent magnitude limit of $m_r < 15.7$ are also included as orange squares. The galaxies observed for this work with available GAMA SFRs are shown as yellow stars, and those without instead with *Wide-field Infrared Survey Explorer (WISE) W3* band SFRs are shown as purple stars. The *WISE* SFRs are $H\alpha$ SFRs derived from the $12 \mu\text{m}$ luminosity

Table 1. Observations and SFR comparisons for the nine central void galaxies in our sample.

Galaxy	Redshift	Obs date	Exp time (s)	m_r^1	$u - r^2$	Stellar mass ³ ($\times 10^{10} M_\odot$)	Parent survey	H α SFR ⁴ ($M_\odot \text{ yr}^{-1}$)	WISE SFR ⁵ ($M_\odot \text{ yr}^{-1}$)	GAMA SFR ⁶ ($M_\odot \text{ yr}^{-1}$)
IC 0566	0.03660	Mar 2015	4800	14.15	2.55	10.71	SDSS	0.03	0.22	
CGCG 010-071	0.03362	Mar 2014	3600	13.92	2.87	10.92	SDSS	0.24	1.34	
GAMA 214363	0.04213	Mar 2015	4500	14.50	2.77	10.96	GAMA	0.06	0.14	–
GAMA 534760	0.05259	Mar 2015	6000	15.72	2.82	10.74	GAMA	0.09	0.02	0.55
CGCG 013-075	0.02558	Mar 2015	5633	14.05	2.66	10.79	SDSS	0.45	0.72	
CGCG 019-064	0.01393	Mar 2015	4200	14.04	2.35	10.12	GAMA	0.05	0.19	0.20
IC 1059	0.02646	Mar 2015	4080	13.69	2.74	10.83	GAMA	0.48	0.31	0.31
IC 0653	0.01847	Mar 2014	3600	12.90	2.71	10.62	SDSS	0.26	2.33	–
CGCG 017-063	0.02864	Mar 2014	2700	13.42	2.67	10.75	SDSS	0.70	3.29	–

Notes. ¹SDSS r -band model magnitudes.

²SDSS model magnitudes. All galaxies have $u - r$ colour such that they would be located on the red sequence as defined by Baldry et al. (2004).

³From Taylor et al. (2011).

⁴Total integrated SFRs from this work.

⁵12 μm SFR relation from Cluver et al. (2014) adjusted to a Salpeter (1955) IMF using the conversion of Gunawardhana et al. (2013).

⁶From Hopkins et al. (2013), adjusted to a Salpeter (1955) IMF using the conversion of Gunawardhana et al. (2013).

relation of Cluver et al. (2014). For void galaxies above the mass cutoff, both isolated and central void galaxies show a spread in SFR of several dex. The presence of these void galaxies in both the red sequence and blue cloud at present day indicates a spread in quenching times and assembly histories, even for galaxies of similar mass.

A colour–magnitude diagram of the massive void galaxies reveals just 13 per cent are classified as red-sequence objects using the Baldry et al. (2004) line. If we apply our magnitude limit of $m_r < 15.7$, just nine red sequence and seven blue cloud galaxies remain. We chose to target the reddest galaxies of this sample for our study, as they are the best place to look for the occurrence of mass quenching and constitute an interesting subsample, since in general, void galaxies tend to be bluer than the field. We wish to determine whether these galaxies have received enough external stimulus to evolve into early-type galaxies to match their red colour, or if we are studying a sample of pristine disc galaxies in the process of secular evolution only. While these galaxies have low H α fibre fluxes consistent with optically red galaxies in Fig. 1, their mid-IR colours suggest a moderate excess of 12 μm emission for at least half of the galaxies targeted.

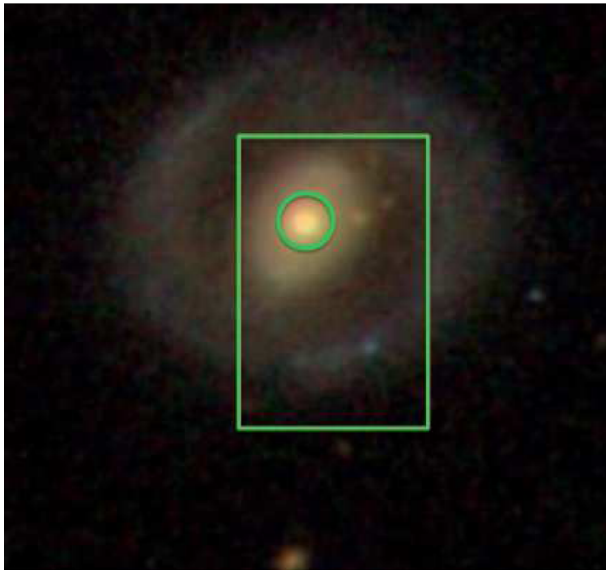
We wish to examine our massive void galaxy sample using IFS since traditional fibre spectroscopy will often miss regions of star formation in the outskirts of large, nearby galaxies (e.g. Pracy et al. 2014). As an example, we present the central void galaxy CGCG 013-075 in Fig. 3. This galaxy is a face-on, barred spiral with blue, star-forming arms as shown in the SDSS colour image (Fig. 3a). The SDSS fibre diameter is 3 arcsec, and the spectrum of this central region of the galaxy is plotted in Fig. 3(b) in red, and 950 stacked spaxels from the WiFeS IFS with a field of view of 25 arcsec \times 38 arcsec and covering the entire galaxy out past an effective radius is plotted in blue. The H α region of the spectra is highlighted in yellow. We see that the H α line is much more pronounced in the IFS spectrum, which includes much of the galaxy, rather than just the central 1.5 arcsec, as in the SDSS spectrum. This is a ‘typical’, discy void galaxy, with a red bulge, but star formation occurring in the outer regions. Galaxies such as this may be common in void regions, where interactions may not have been frequent enough to remove star-forming discs. Could the void central galaxies in Fig. 1 be mis-plotted on the star-forming main sequence due to small fibre size missing star-forming regions? It is for these reasons we seek to spatially examine massive void properties.

2.2 How pristine are these void Galaxies?

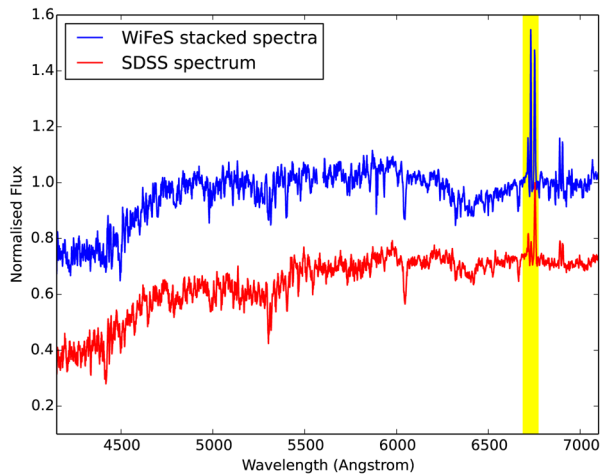
We check the likelihood that these galaxies have lived their entire life in voids, and have not been ejected from large-scale structure. To do this we estimate the maximal distance a galaxy can travel in a Hubble time. If we assume a galactic expansion rate of $\sim 10 \text{ Mpc}/H_t$, and the exemplar peculiar motion of a galaxy over a Hubble time is $\sim 2\text{--}3 \text{ Mpc}$, the furthest a galaxy can travel over a Hubble time is the addition of these two terms, $\sim 12\text{--}13 \text{ Mpc}$. Pan et al. (2012) state the average void radius is $17 h^{-1} \text{ Mpc}$ ($\sim 12 \text{ Mpc}$ using $H_0 = 70 \text{ km s}^{-1}$). So while it is physically possible that galaxies from large-scale structure may end up in voids, it is not likely, as over time, galaxies are generally gravitationally attracted towards regions of large-scale structure. While it is feasible a low-mass dwarf galaxy could be flung into a void, the chance that one of our high-mass central void galaxies has been cast out of large-scale structure is low, as it would have had to occurred at very early times and move in the correct direction to come to be located in the central regions of a void at current times. We may be reasonably confident that all central void galaxies have lived their entire life in voids. While this would point to them having experienced secular evolutionary processes their entire lives, we stress that this does not preclude interaction with other void galaxies (e.g. Hirschmann et al. 2013).

3 OBSERVATIONS AND DATA REDUCTION

Observations were taken over two, six night periods from 2014 March 5th–10th and 2015 March 23th–28th using the WiFeS (Dopita et al. 2007, 2010) on the Australian National University’s 2.3 m telescope at Siding Spring Observatory. WiFeS is a dual beam, image slicing IFS with a field of view of 25 arcsec \times 38 arcsec, consisting of 25 \times 1 arcsec slitlets of 38 arcsec length. If the data are binned 2 \times 1 in the y direction, the resulting spaxel size is 1 arcsec \times 1 arcsec. The B3000 ($\sim 3500\text{--}5800\text{\AA}$) and R3000 ($\sim 5300\text{--}9000\text{\AA}$) gratings were used along with the RT560 dichroic, resulting in a spectral resolution of $\sigma \simeq 100 \text{ km s}^{-1}$ for both the red and blue arms. This wavelength range for our low- z target sample includes the H α , H β , H δ and H γ Balmer lines, along with forbidden lines [N II], [S II], [O III], the 4000 \AA break and the H & K absorption line features. The 2014 run used WiFeS in ‘classical’ mode, while ‘nod-and-shuffle’ was used in 2015. Both modes spend equal time



(a)



(b)

Figure 3. An example of what can be missed with traditional fibre spectroscopy, CGCG 013-075 – a barred spiral galaxy, and its corresponding spectra taken with both a small aperture and an IFS. (a) An SDSS colour image of the galaxy CGCG 013-075 with SDSS fibre diameter and WiFeS rectangular field of view overlaid in green. While the SDSS fibre catches only the red, passive central bulge region of the galaxy, the WiFeS IFS summed spectra catch the blue spiral arm regions and associated $H\alpha$ emission. (b) The WiFeS IFS summed spectra of CGCG 013-075 with each spaxel velocity-shifted to the centre spaxel (blue) and the SDSS fibre spectrum (red). The $H\alpha$ and $[N II]$ doublet region are highlighted in yellow. The lack of $H\alpha$ in SDSS spectrum is obvious, illustrating how important capturing an entire galaxy is, and how aperture bias may affect SFR estimates for large, nearby galaxies.

on target and sky regions, but nod-and-shuffle mode takes shorter exposures, moving back and forth between object and sky regions more rapidly, providing a more real-time sky spectrum, and facilitating better sky subtraction. Weather conditions were a mixture of clear and patchy cloud, with an average seeing of 2 arcsec in non-photometric conditions. Each field was observed a minimum of three times, to allow removal of cosmic rays via median recombination. Table 1 lists all void galaxies observed.

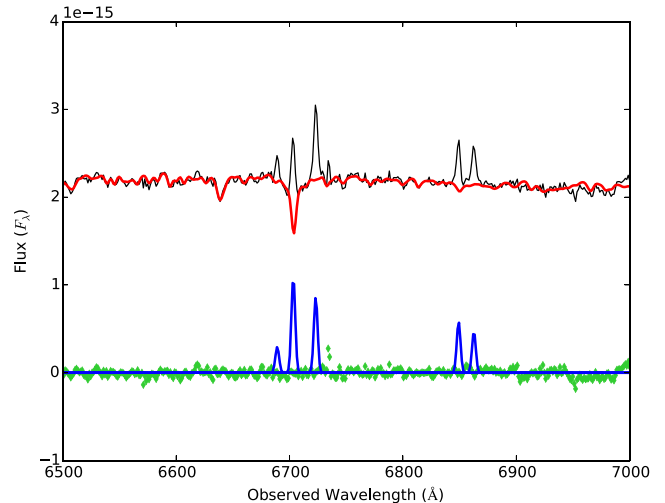


Figure 4. An example of a PPF fit for the central spaxel of the void galaxy CGCG 019-064 around the $H\alpha$ region (second emission line from the left). The original galaxy spectrum is in black, the best-fitting PPF stellar continuum fit in red, single Gaussian-fitted emission lines in blue, and residuals in green. Note the extra emission flux added to the $H\alpha$ line after correcting for flux lost due to stellar Balmer absorption.

The data were reduced using the dedicated WiFeS data reduction pipeline (PYWIFES; Childress et al. 2014). The PYTHON routine includes bias subtraction, flatfielding, wavelength calibration, sky subtraction, cosmic ray removal and flux calibration using spectrophotometric standard stars. The final product is two data cubes, one red and one blue, for each galaxy.

4 STELLAR AND GAS KINEMATICS

The stellar and gas kinematics of each galaxy (velocity and line-of-sight velocity dispersion, σ), were analysed using the penalized pixel fitting (PPXF) method of Cappellari & Emsellem (2004). To improve the S:N of the outer regions of the galaxy, the data cubes were first Voronoi binned to obtain a S:N of 15 per bin for the red arm and 5 per bin for the blue arm using the PYTHON script of Cappellari & Copin (2003). The difference in S:N cuts is because the WiFeS blue arm camera is less sensitive than the red. Cappellari & Emsellem (2004)'s Voronoi binning technique accretes spaxels (beginning at the brightest spaxel of a galaxy) into a bin until the target S:N is reached with constraints on bin shape. While the central spaxels generally provided high enough S:N, most outer regions of low galaxy surface brightness needed significant binning. As outer regions comprised bins of several spaxels which were not velocity-shifted before analysis we expect some smearing of emission lines affecting kinematic analysis. These bins also did not usually reach the target S:N and were therefore not used in our emission line analyses however. The stellar continuum was modelled using a subset of the Indo-US Library of Coudé Feed Stellar Spectra templates (Valdes et al. 2004) covering a range of stellar ages and metallicities. These templates were chosen for their long wavelength coverage (3460 Å–9464 Å) and high spectral resolution (FWHM = 1.35 Å). Gas emission lines were fitted simultaneously to avoid the need for masking by modifying the example `ppxf_population_gas_example_sdss.py` provided in the PPF package. Emission lines were fitted using a single Gaussian profile. Fig. 4 shows an example PPF fit to the central spaxel of the void galaxy CGCG 019-064 around the $H\alpha$ region.

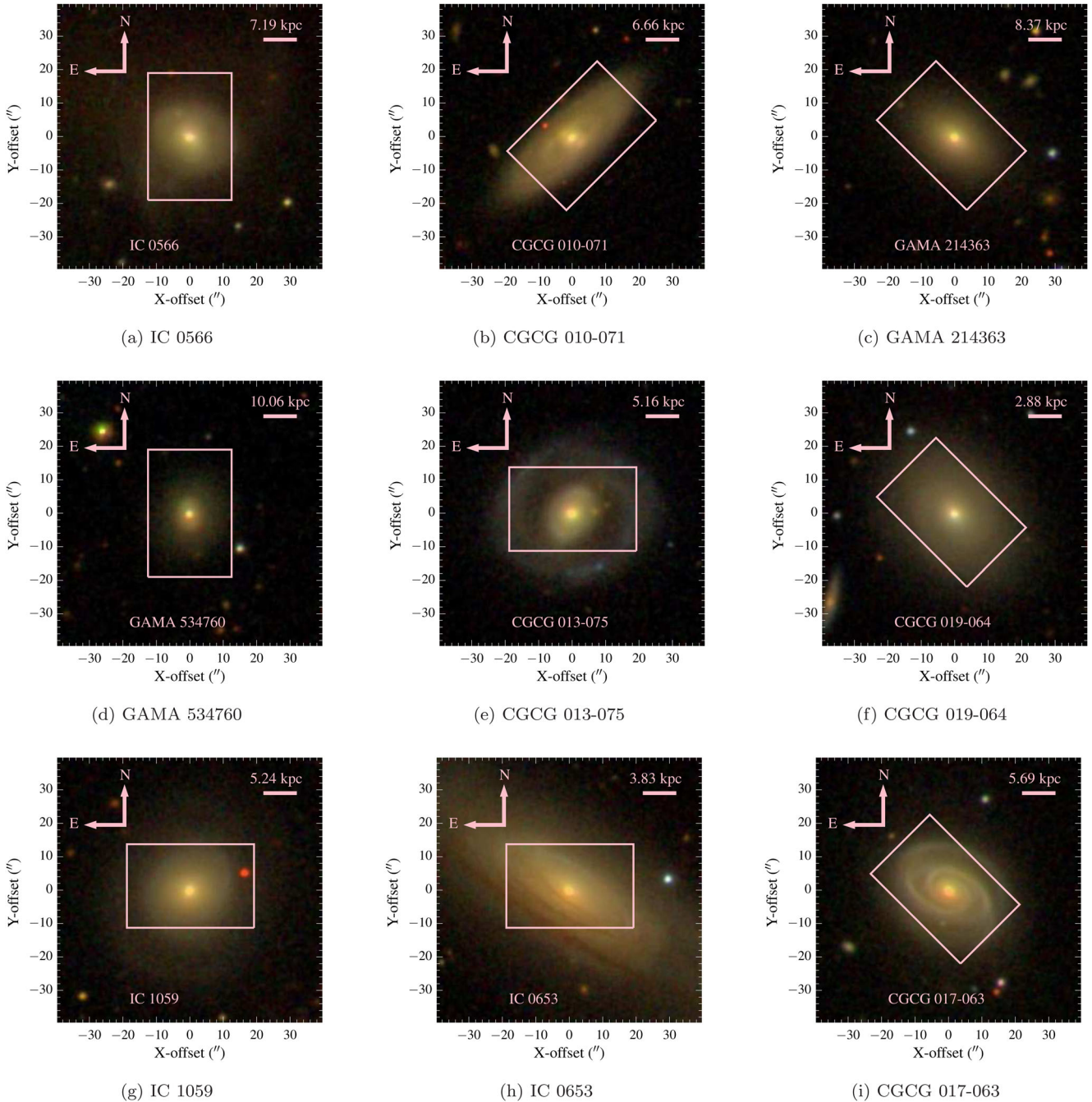


Figure 5. SDSS colour images of the nine void galaxies in the sample with the WiFeS field of view of $25 \text{ arcsec} \times 38 \text{ arcsec}$ overlaid in pink. All galaxies appear optically red, with the exception of CGCG 013-075, which possesses blue spiral arms. IC 0566 contains a total tail in the south-east corner, likely the result of a recent merger.

An error approximation for the stellar kinematics was completed by performing 100 Monte Carlo realizations of the best-fitting output by `PPXF` for each Voronoi bin of every galaxy. To do this, random noise is added to the best fit, then the `PPXF` fit performed 100 times. The standard deviation of the weighted mean of all the fits with the random noise added is our uncertainty in our velocity, velocity dispersion and emission line values.

5 FLUXES, EQUIVALENT WIDTHS AND STAR FORMATION RATES

Emission line fluxes are calculated by numerically integrating the area underneath the `PPXF` emission line fits. $H\alpha$ emission line equivalent widths (EWs) are calculated from these flux values and the continuum levels $\sim 30 \text{ \AA}$ either side of the $H\alpha$ line.

As we have modelled and subtracted the stellar continuum using `PPXF`, we do not need to include any stellar absorption corrections,

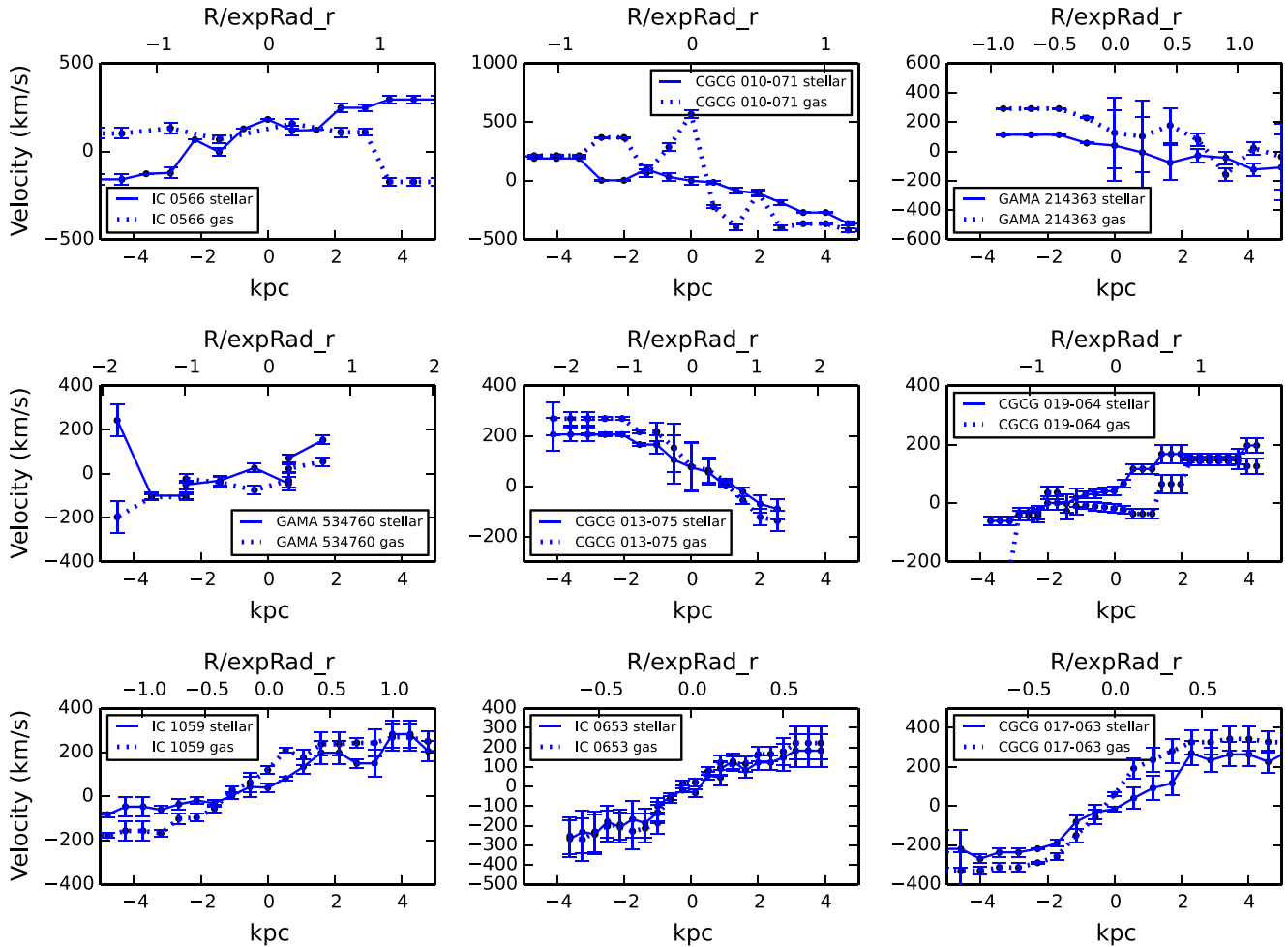


Figure 6. Stellar (solid line) and gas (dashed line) rotation curves as measured along each galaxy’s kinematic major axis as a function of both distance from galaxy centre (kpc) and fraction of the SDSS exponential fit radius, $expRad_r$, corrected for galaxy inclination. Error bars denote the Monte Carlo error for the `PRXF` fit to the Voronoi bin. Kinematics derived from Voronoi bins that did not reach the target S:N (those on the edges) are not included. The gas and stellar kinematics, both derived using `PRXF`, match up well in the central regions (where there is high S:N) for all but two galaxies – IC 0566 and CGCG 010-071, which we expect merger activity and a galactic bar disrupting gas flow to be the cause of the obviously disturbed gas morphologies.

though we must account for obscuration by dust in our derived SFRs. We calculate the $H\alpha$ -derived SFR of our galaxies by using the SFR relation employed by Richards et al. (2016):

$$SFR(M_{\odot} \text{ yr}^{-1}) = \frac{F_{H\alpha} \times 4\pi D_L^2}{1.27 \times 10^{34} \text{ W}} \times \left(\frac{BD}{2.86}\right)^{2.36}, \quad (1)$$

where $F_{H\alpha}$ is the integrated $H\alpha$ flux in W m^{-2} , D_L is the luminosity distance in m, and $1.27 \times 10^{34} \text{ W}$ is the conversion factor to convert to solar masses per year, as given by Kennicutt (1998) assuming a Salpeter (1955) IMF and solar metallicity. BD is the Balmer decrement of the stellar absorption-corrected ratio of $H\alpha$ to $H\beta$ emission line fluxes assuming a Case-B recombination value of 2.86 (Calzetti 2001) with a reddening slope of 2.36 (Cardelli, Clayton & Mathis 1989) and the dust as a foreground screen averaged over the galaxy. Balmer decrement values varied from spaxel to spaxel throughout each galaxy, and where either $H\alpha$ or $H\beta$ measurements were not available for a given spaxel, we take the average Balmer decrement of the neighbouring spaxels. As an example, for the galaxy CGCG 013-075, Balmer decrement values span the range from ~ 2.9 on the outskirts to 6.5 in the central regions.

The SFR is calculated for each Voronoi bin above the target S:N, then added together to get the total SFR for a galaxy. Table 1

compares the SFRs calculated in this work with optical (GAMA) and mid-IR (*WISE*) integrated SFRs from the literature. The *WISE* SFRs are calculated using the relation of Cluver et al. (2014), which is derived using the GAMA SFR relation of Wijesinghe et al. (2011), assuming the IMF definition of Baldry & Glazebrook (2003). Stellar emission has been subtracted from the *W3* band using the *W2* band, leaving just emission from hot dust associated with star formation. Gunawardhana et al. (2013) find the difference between the GAMA IMF and a Salpeter (1955) IMF results in a SFR approximately a factor of 2.4 lower. We therefore multiply the Cluver et al. (2014) SFRs by a factor of 2.4, for a comparison to the values presented in this work using the Richards et al. (2016) relation.

6 RESULTS AND DISCUSSION

6.1 Secularly evolving void galaxies

First, we morphologically classify our galaxies, using the SDSS colour images shown in Fig. 5. We see that eight of the nine galaxies observed have obvious discs. Of these, we visually classify four galaxies as spiral, one of which has blue arms, the other three are

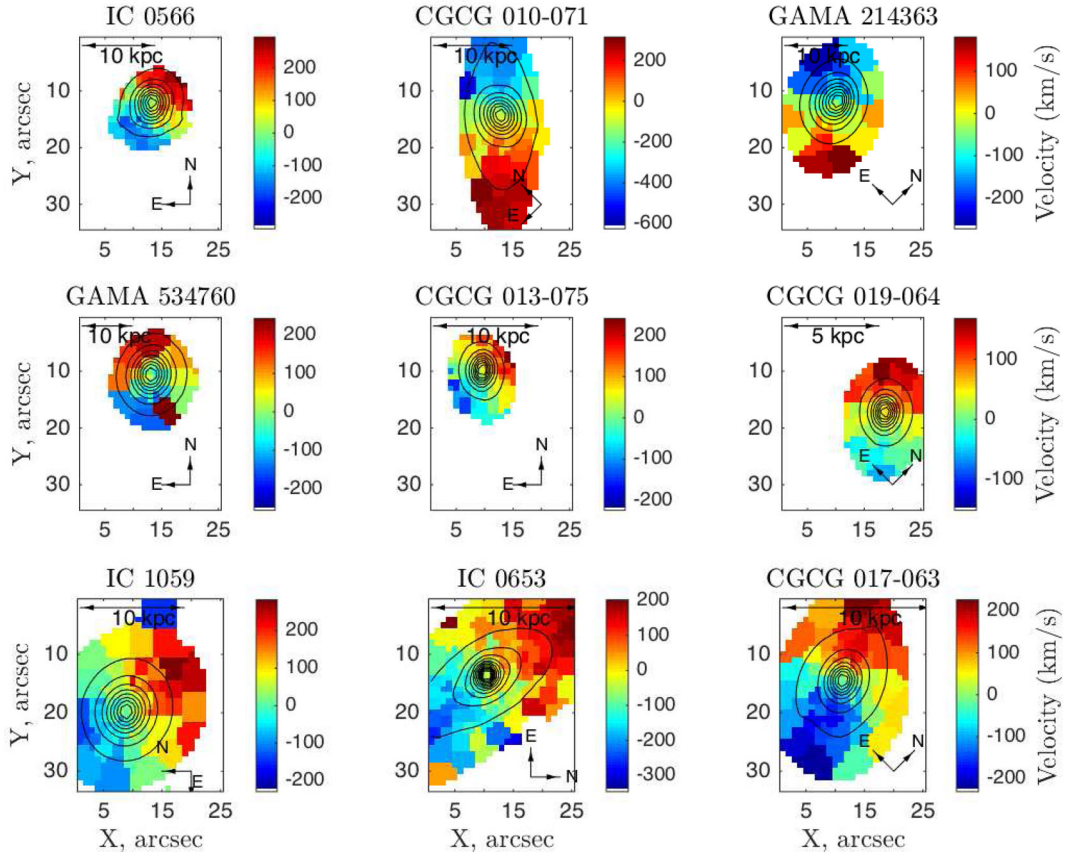


Figure 7. Stellar velocity maps of the nine void galaxies in our sample derived from the `PPXF` fit to each Voronoi bin above the S:N threshold. Total integrated flux contours are overlaid in black. All galaxies are rotating regularly, leading them to be classified as discs.

red. Four galaxies have lenticular morphology, and the final galaxy is disturbed.

Our morphological classifications are confirmed by Fig. 6, where we present the stellar (solid line) and gas (dashed line) velocity curves for all void galaxies in our sample extracted along the kinematic major axis of each galaxy. The stellar kinematics show all nine galaxies are rotating regularly with a maximum velocity of several hundred km s^{-1} . The rapid rotation implies these galaxies are (or recently have been) discs. The discy nature of the galaxies in our sample coupled with high stellar mass implies isolation, and a secular evolutionary history.

In Figs 7 and 8, we present maps of stellar and gas kinematics, respectively. The constant rotation of the stellar kinematics further confirm the discy nature of these galaxies. The gas kinematics matches the stellar for most of the galaxies in our sample, leading us to conclude they have had no recent interactions, and confirming their secularly evolving nature. For the galaxy CGCG 010-071, the central regions of the gas and stellar kinematic maps show some discrepancy, leading to central velocity differences between gas and stellar components along the kinematic major axis of several hundred km s^{-1} . Nair & Abraham (2010) classify this galaxy as a barred spiral, and we suggest the gas kinematics are being disrupted in the central regions by the presence of a galactic bar (e.g. Masters et al. 2011).

From Fig. 5, we see that IC 0566 has an obvious extension in the south-west corner, likely the result of a recent merger. Mergers can disturb gas kinematics whilst still maintaining regular rota-

tion of stellar kinematics. Indeed, from Figs 7 and 8, we see that while the stellar component is rotating regularly, the gas kinematics are highly variable from spaxel to spaxel. As this galaxy has very little nebular emission detected from the `PPXF` fit in its central regions, the gas velocity can only be determined for the spaxels which have reliable emission line information. Despite this, those with gas velocity information are significantly variable enough to suggest the gas in this galaxy is very disturbed. In combination with the visual asymmetry of this galaxy, we conclude it is undergoing or has recently undergone a merger. We investigate the literature to determine the likely merger scenario that may have occurred.

Hirschmann et al. (2013) performed a detailed statistical analysis of isolated model galaxies extracted from the Millennium simulation (Springel, Di Matteo & Hernquist 2005). They found that ~ 45 per cent of isolated galaxies at $z = 0$ have experienced at least one merger event in their lifetimes, most of which were minor ($< 1:4$ mass ratio). A small fraction of isolated galaxies in our sample were bulge-dominated, whose bulges had been built mainly from minor mergers. Penny et al. (2015) also used the Millennium simulation to find the time since last merger for isolated, massive void galaxies. They find that the major merger histories of massive void galaxies differ significantly from non-void galaxies. The major merger rates are typically much lower than non-void galaxies and almost negligible at current times. One per cent of void galaxies with $M_* > 5 \times 10^{10} M_\odot$ have undergone a major merger in the last 5 Gyr (compared to 21 per cent of the total galaxy population in this mass range), demonstrating that the dominant morphology of

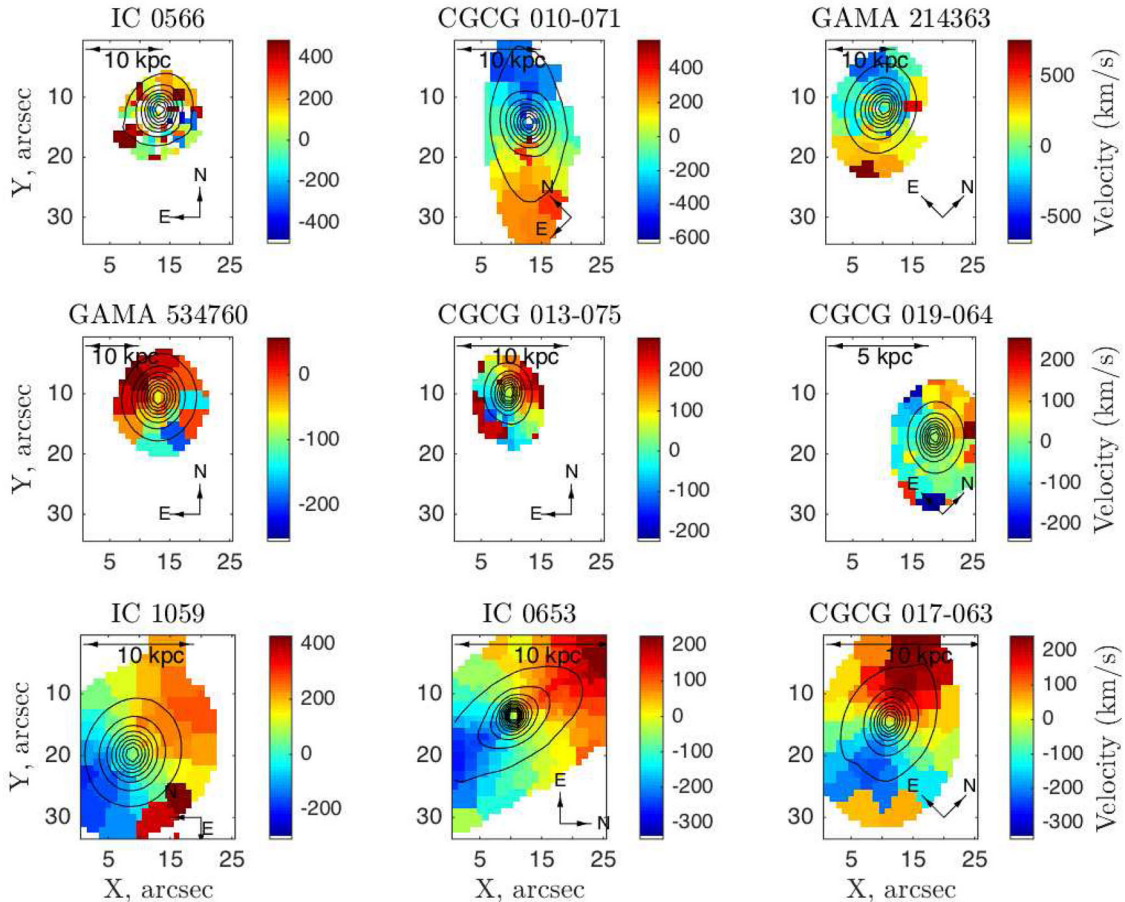


Figure 8. Gas velocity maps for the nine void galaxies in the sample derived from the `ppxf` fit to the nebular emission lines above the S:N threshold. If nebular emission lines are not detected by the `ppxf` fit for a region, the gas velocity is not measured, as is the case for some central regions of IC 0566 and CGCG 010-071. For the majority of galaxies the gas and stellar velocities match well, though the central region of CGCG 010-071 is disturbed. The gas of IC 0566 does not match the stellar velocity map, leading us to conclude this galaxy has experienced an event to disrupt the gas, such as a merger.

massive void galaxies remains discy. A larger fraction of major mergers is effectively ruled out by Λ CDM cosmology as the cause of the gas disruption in our galaxies, so we assume that minor mergers and gas accretion are the cause. We now investigate the chance an isolated void galaxy will experience an interaction at current times.

Observationally, examples exist of interacting systems in void regions. In fact, the $H\text{I}$ discs of galaxies in voids are just as likely to be disturbed as they are undisturbed. The void galaxy survey (Kreckel et al. 2012) imaged 60 void galaxies in $H\text{I}$ to find that ~ 50 per cent show strongly disturbed gas morphology or kinematics, ~ 8 per cent of which are clearly interacting with companions. Beygu et al. (2013) study an interacting system of three galaxies embedded in a common $H\text{I}$ envelope. A tidal tail is seen on one of the galaxies, attributed to a recent minor merger. While this system is likely very unusual, it does contribute along with the interacting galaxies in Kreckel et al. (2012) to the anecdotal evidence that minor mergers in voids are still occurring at current times.

While we did not select our sample based on disturbed morphology, our results confirm those of Kreckel et al. (2012), that interacting void galaxies are not uncommon, and the dominant method of interaction is minor mergers. We investigate current day SFRs in Section 6.2 to determine whether these mergers were likely to have been wet or dry.

6.2 $H\alpha$ maps and star formation in massive, central void galaxies

In Fig. 9, we present the normalized $H\alpha$ emission line maps for the nine void galaxies in our sample. For all but one galaxy (CGCG 019-064) we see a common scenario emerging of a low relative amount of $H\alpha$ emission in the cores of these galaxies, and a younger stellar population in the disc regions of the galaxies. This $H\alpha$ distribution is what we would expect for a disc galaxy population, and confirms the notion that these galaxies are secularly evolving. For CGCG 019-064, we investigate whether the central concentration of $H\alpha$ is either nuclear star formation or AGN activity in Section 6.3.

We calculate SFRs from these $H\alpha$ emission line maps using equation (1), and in Table 1 we present the total integrated SFR of all galaxies in our sample. All galaxies possess SFRs $< 1 M_{\odot} \text{ yr}^{-1}$. These SFRs are surprisingly low, given their predominantly discy morphology. We expect that our total integrated SFRs underestimate the true SFR of the galaxy for two reasons. A minor flux calibration issue was discovered when comparing the WiFeS spectra to their Sloan r -band flux at the r -band effective wavelength. This flux discrepancy is likely due to non-photometric conditions whilst observing. As a result, we find total continuum (and hence $H\alpha$) flux to be underestimated by ~ 20 per cent, which propagates to an underestimation of SFR of ~ 20 per cent. Additionally, the

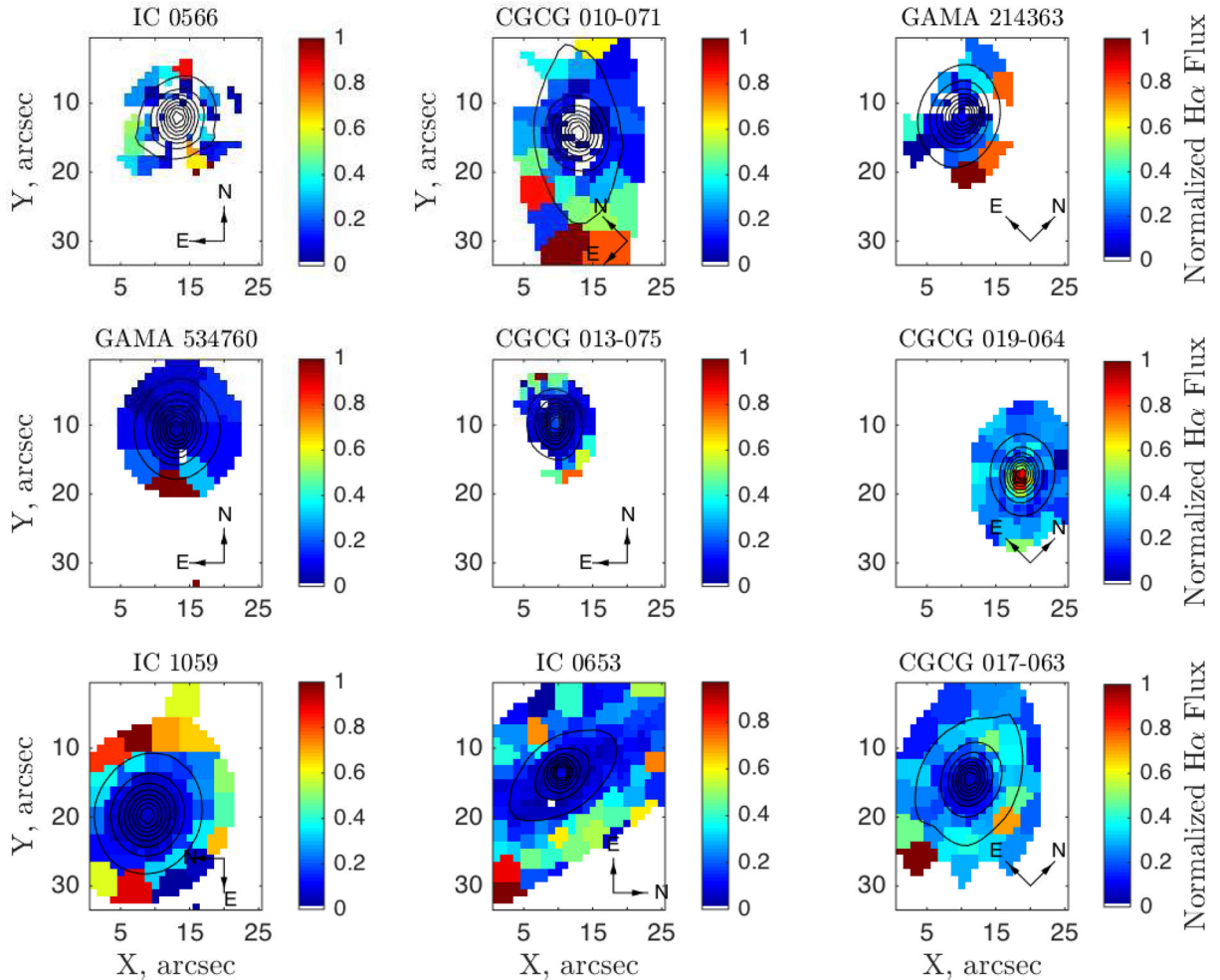


Figure 9. Normalized $H\alpha$ flux maps for all central regions of the galaxies in our sample. White regions correspond to where the ppxf fit did not pick up any $H\alpha$ emission. The black contours overlaid are total integrated flux. The majority of our sample possess discs of younger stellar population with old stars in their nuclear region. The exception is CGCG 019-064, which has the majority of its $H\alpha$ emission in its core. This is due either to star formation or AGN emission.

Voronoi bins that do not reach the target S:N on the outskirts of the WiFeS field of view were not counted towards the total SFR value. This resulted in a smaller area of the galaxy being covered than anticipated, potentially missing some star-forming areas of the disc. As Fig. 9 shows, this is where the younger stellar population of the majority of these galaxies lie.

To assess the effect this has on the total SFRs, we compare our integrated SFRs to that of the photometrically derived SFRs using *WISE* 12 μm band colour from the relation of Cluver et al. (2014), and GAMA fibre SFRs. In general, we find the fibre-derived SFRs are systematically lower than the total integrated SFRs from this work. We expect this is because the aperture corrections applied assume the galaxy outskirts are as red and passive as the nuclear region, as illustrated in Fig. 3. In contrast, the *WISE* SFRs are systematically higher than those calculated in this work.

SFR discrepancies are most noticeable in the galaxies with large angular size. Reassuringly, our smallest galaxy, GAMA 534760, which fits comfortably in the WiFeS field of view, has a SFR that compares well to the *WISE* SFRs. Perhaps not surprisingly, since these galaxies are optically red, we do not see any evidence of substantial ongoing levels of star formation.

6.3 AGN activity

While we assume that any detected $H\alpha$ is primarily the result of star formation, Constantin, Hoyle & Vogeley (2008) showed the prevalence of AGN in void galaxies is similar to that of denser wall regions. We therefore check if any of the $H\alpha$ emission in our galaxies is the result of AGN activity. In Fig. 10, we present Baldwin, Phillips & Terlevich (BPT; Baldwin, Phillips & Terlevich 1981) diagrams and in Fig. 11 we present $W_{H\alpha}$ versus $[N\text{II}]/H\alpha$ (WHAN; Cid Fernandes et al. 2011) emission line diagnostic diagrams as a function of distance from the galaxy centre. Every point on each diagram corresponds to a Voronoi bin with emission of the relevant lines. Distance to galaxy centre is measured from the flux-weighted centre of the Voronoi bin. The BPT diagrams show most regions of most galaxies residing in either the AGN or AGN+SF regions, though the outer Voronoi bins will suffer from either low S:N, or despite being located in the AGN regions, will be retired ('fake AGN'; Cid Fernandes et al. 2011). CGCG 019-064 has all its central bins located tightly in the AGN region, and along with the high concentrations of $H\alpha$ and $[O\text{III}]$ in the central regions of this galaxy, we expect it to host an AGN.

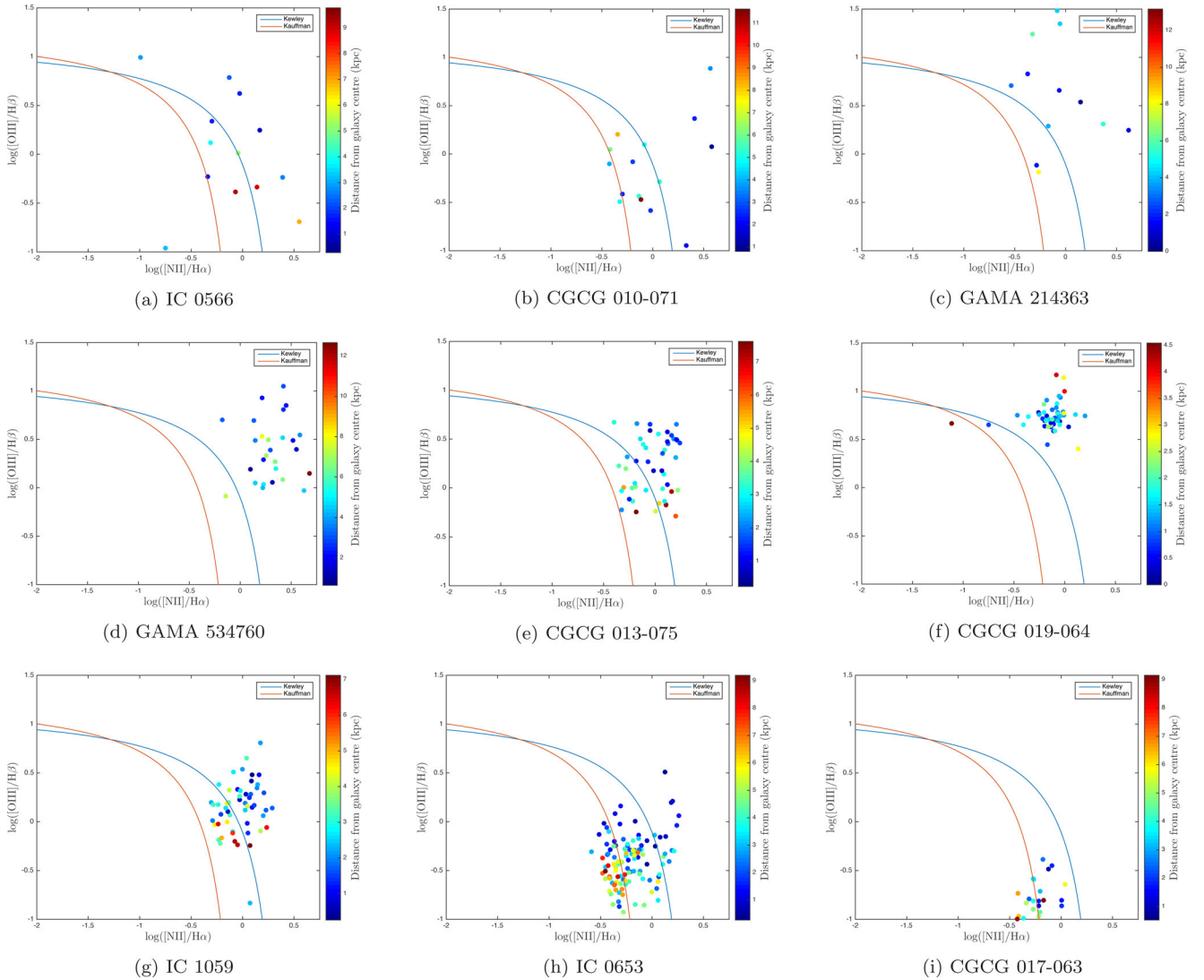


Figure 10. BPT diagrams for sample as a function of distance from galaxy centre for the nine void galaxies studied in this work. The Kauffmann et al. (2003) and Kewley et al. (2006) lines are in orange and blue, respectively. We expect CGCG 019-064 to possess an AGN by the tight correlation of its central points in the AGN region, the rest of the galaxies should be checked against the WHAN diagrams in Fig. 11 for fake AGN.

When used in conjunction with a BPT diagram, a WHAN diagram can separate regions of AGN activity from retired regions of a galaxy with similar $[\text{N II}]/\text{H}\alpha$. Indeed, the central regions of a galaxy located in the AGN region of a BPT diagram should only be classified as a bona fide AGN if they also lie in the AGN region of a WHAN diagram. We see that for the majority of our galaxies, this is not the case. Of the galaxies with high S:N in Fig. 11, we see five follow a tight correlation through the star-forming region for the outer bins, and into the passive/retired region for the central bins. CGCG 013-075 extends significantly into the AGN region of the WHAN diagram, so we classify it as an AGN. While CGCG 019-064 does not have points in the AGN region of this diagram, given other evidence such as high concentrations of $\text{H}\alpha$ and $[\text{O III}]$ in the central regions, we still assume AGN activity, despite the narrow $\text{H}\alpha$ EWs. None of our nine galaxies satisfy the mid-IR strong AGN selection criteria of Jarrett et al. (2011). This, along with a lack of emission line broadening of the spectra lead us to believe these are Seyfert galaxies. Constantin et al. (2008) show that for the median

mass of our sample ($\sim 10^{10.5} M_{\odot}$), the fraction of weak AGN expected in void regions is approximately 0.07, while the strong AGN fraction is ~ 0.05 . It is therefore feasible that there are two galaxies hosting AGN in our sample of nine.

7 COMPARISON TO A SAMPLE OF ‘FIELD’ GALAXIES

We have concluded that despite having predominantly secular evolution histories and similarly low SFRs, our void galaxy sample must still possess a wide range of assembly histories from their kinematics and AGN fraction. We seek to discover how these attributes compare against a sample of galaxies in the wider galaxy population. We compare the properties of our void galaxy sample to that of a mass, magnitude and redshift-matched sample of field galaxies, drawn from the SAMI galaxy survey early data release (EDR; Croom et al. 2012; Allen et al. 2015; Bryant et al. 2015; Sharp et al. 2015).

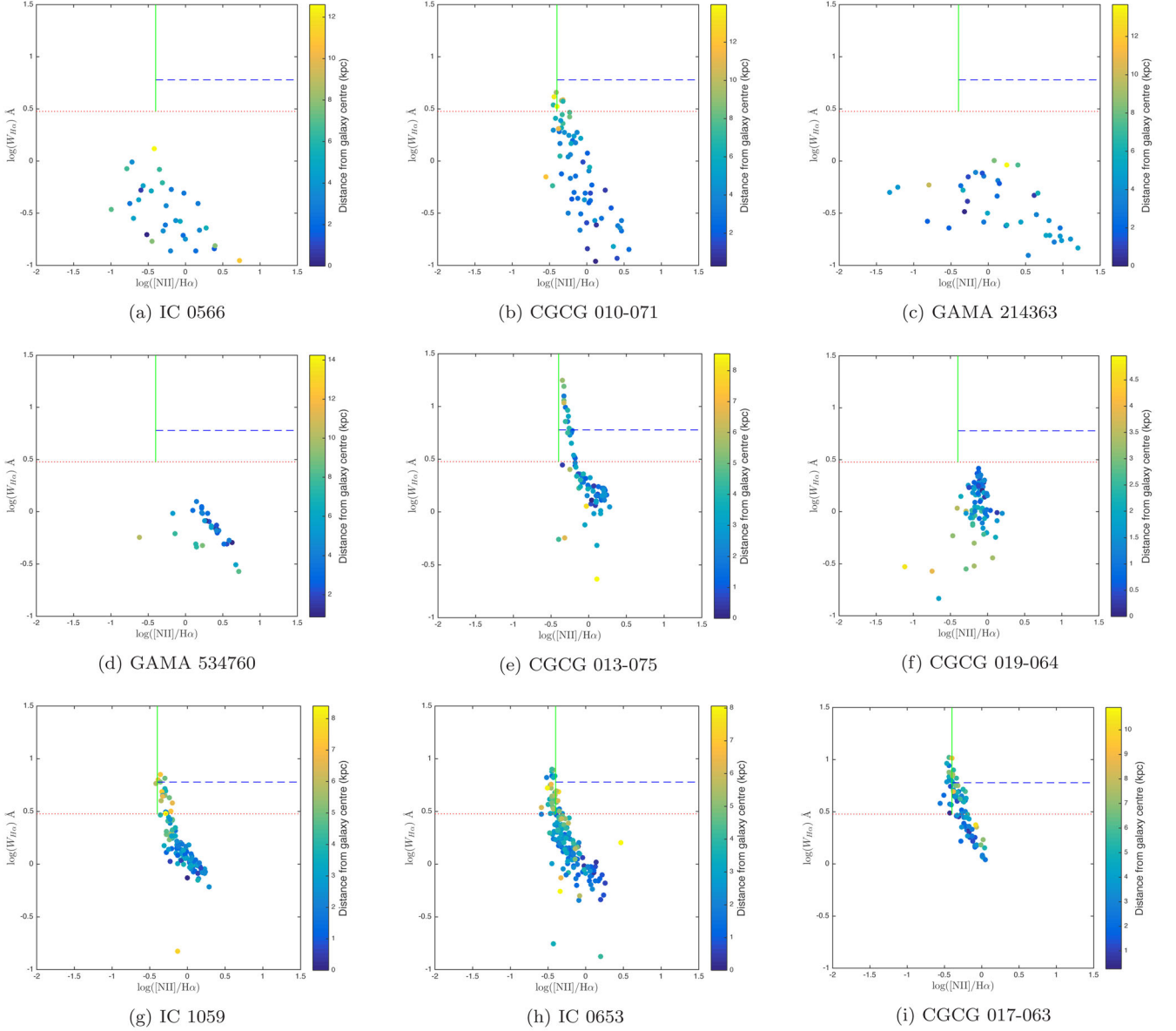


Figure 11. WHAN diagrams for the sample as a function of distance from galaxy centre. Dividing lines are plotted as per Cid Fernandes et al. (2011) to delineate between star-forming, passive/retired and strong and weak AGN regions. Five of the galaxies with high S:N show a tight correlation between $\log([\text{N II}]/\text{H}\alpha)$ and $\log(W_{\text{H}\alpha})$, though only CGCG 013-075 has central points in the AGN region. For this reason, we classify this galaxy as an AGN.

7.1 Field galaxy sample

A comparison sample of field galaxies taken from all environments was created from the SAMI galaxy survey EDR by matching to the constraints used to select our void galaxy targets. All galaxies with stellar mass $> 10^{10} M_{\odot}$, redshift < 0.052 and r -band apparent magnitude < 15.7 were included in the sample. This selection ensures the galaxies we are comparing to are similarly massive. Of the 107 galaxies in the SAMI EDR, nine fit these criteria, the properties of which are described in Table 2, with SDSS colour images in Fig. 12. Despite the identical selection method, these nine galaxies are bluer than the void sample, spread throughout the star-forming main sequence and quiescent regions. On a $u - r$ colour–magnitude diagram using SDSS photometry, four galaxies lie on the red sequence, four in the green valley, and one in the blue cloud. Their

mid-IR colours show a slightly higher excess of W3 than the void sample of this work. We check that these field galaxies are in sufficiently denser regions of the cosmic web than our void galaxies by determining the distance to the fifth nearest neighbour (d_5) and the environmental density (σ_5) of the field sample to compare to the void sample. We use the SDSS DR7 sample with an absolute magnitude cut of $M_R > -20$ to determine d_5 and σ_5 following the method described in Baldry et al. (2006). Our field galaxies have a median $d_5 = 1.8 \text{ Mpc}$ and $\sigma_5 = 0.504 \text{ Mpc}^{-2}$, compared to 4.8 Mpc and 0.069 Mpc^{-2} for void regions, respectively. Baldry et al. (2006) states that void regions should have σ_5 as low as 0.05 Mpc^{-2} , increasing to 20 Mpc^{-2} for cluster regions for SDSS DR4. We are therefore satisfied our sample galaxies are located in bona fide void regions, and are sufficiently more underdense than the comparison field galaxies.

Table 2. SAMI EDR galaxies used to create a ‘field’ sample to compare our void galaxies to.

Galaxy	Redshift ¹	m_r^2	$u - r^3$	Stellar mass ⁴ (M_\odot)	Environment ⁵	SFR ⁶ ($M_\odot \text{ yr}^{-1}$)	WISE SFR ⁷ ($M_\odot \text{ yr}^{-1}$)
GAMA 47342	0.024	15.36	2.01	10.07	Isolated	1.62	–
GAMA 79635	0.040	15.05	2.16	10.45	Isolated	1.79	1.70
GAMA 91924	0.052	15.04	2.25	10.61	Galaxy pair member	2.55	1.96
GAMA 91963	0.050	14.52	2.61	11.02	Galaxy pair member	0.93	0.77
GAMA 230714	0.024	14.95	2.25	10.19	Group member ($n = 35$)	1.81	1.99
GAMA 517302	0.029	15.29	2.18	10.21	Group member ($n = 21$)	1.62	0.46
GAMA 536625	0.037	15.54	2.21	10.21	Isolated	0.90	–
GAMA 570206	0.043	15.60	2.78	10.51	Group member ($n = 19$)	0.96	0.29
GAMA 599582	0.052	14.84	2.71	10.75	BCG of group ($n = 3$)	1.76	2.18

Notes. ¹GAMA.

²GAMA r -band model magnitudes.

³SDSS model magnitudes.

⁴From Taylor et al. (2011).

⁵From Robotham et al. (2011).

⁶Using the relation of Richards et al. (2016).

⁷ $12 \mu\text{m}$ SFR relation from Cluver et al. (2014) adjusted from a Salpeter (1955) IMF using the conversion of Gunawardhana et al. (2013).

At masses $> 10^{10} M_\odot$, mass quenching plays an increasingly important role in galaxy evolution (e.g. Geha et al. 2012), hence we choose to match our void and field sample based on mass rather than environment. Because of this, there may be some secondary environmental effects, for example those caused by nearby neighbours, but with our small sample, we cannot investigate this in detail. Instead, we seek to gain a representative idea of the global properties of isolated void galaxies as compared to the rest of the Universe. We compare these galaxies to our original void galaxy sample in the following sections.

7.2 Morphology and star formation rates

The SDSS colour images of the nine SAMI field galaxies are shown in Fig. 12. These galaxies all appear discy, with a mix of spiral and lenticular morphologies. This is a similar spread to the void galaxy sample.

We present the $H\alpha$ -derived cumulative SFRs as a function of radius in Fig. 13, calculated in the same manner as for the void galaxies using equation (1), but without the need for Voronoi binning of flux due to the superior S:N of the SAMI data. Also included as star-shaped points of the same colour are WISE integrated SFRs for each galaxy when available. While we would expect from prior literature that void galaxies would be on average more star-forming than field galaxies, we find this is not the case. The low S:N of the outer regions of the void galaxies may be contributing to this low SFR however. On average, the SAMI field galaxies possess SFRs greater than that of the void sample. This is not unexpected, as the field galaxies had on average a greater excess of mid-IR W3 emission. If we instead compare WISE SFRs, these galaxies have more comparable SFRs. The highest SFR belongs to a void galaxy, though on average field galaxies still have slightly higher SFRs than void galaxies. We also note that while there are examples of field galaxies with high SFRs and close companions (as seen in Table 2), we cannot conclude that star formation is enhanced by the companions, as we also see examples of high star formation in isolated galaxies. While it is difficult to separate the contribution of large-scale environmental effects and small-scale neighbour effects on star formation, the fact that both high and low star-forming galaxies are seen in all environments in the field sample leads us to

believe that neither are having a significant effect on our small field sample.

Though our samples of both void and field galaxies are not large enough to comment statistically on the average SFRs of each environment, we see no evidence for an enhancement of star formation in void galaxies for this mass range. Since these galaxies are mass-matched, we infer that their relative environments have little effect on star formation, instead quenching is occurring based on the galaxy’s mass.

8 CONCLUSIONS

To investigate the assembly histories of void galaxies, we took IFS observations of a sample of nine massive ($M_* > 10^{10} M_\odot$) central and isolated void galaxies. While gas and stellar kinematics revealed seven of our nine galaxies are regularly rotating as disc galaxies, the remaining two possess gas kinematics consistent with a galaxy that has either undergone a recent merger or gas mixing due to the presence of a galactic bar. Visual morphologies confirm these two diagnoses, and verify the rest of the sample are indeed secularly evolving disc galaxies. Two of our galaxies are located on BPT and WHAN diagnostic diagrams consistent with AGN activity. This range of galaxy properties for a sample of galaxies of similar mass and environment confirms the results of Penny et al. (2015) that there must be many assembly histories present in void galaxies, and highlights the interactions still occurring in voids (e.g. Kreckel et al. 2012). Despite the mix of internal processes occurring in these galaxies, all have uniformly low SFRs of $< 1 M_\odot \text{ yr}^{-1}$ from the central regions of integrated $H\alpha$ -derived SFRs, or $< 3.3 M_\odot \text{ yr}^{-1}$ using the WISE mid-IR photometric relation of Cluver et al. (2014).

We compared our void galaxy sample to that of a mass, magnitude and redshift-matched sample of field galaxies from the SAMI EDR. We find similarly low SFRs for both samples, and no evidence of an enhancement of SFR due to the relative isolation of the void sample. Indeed, some of our void galaxies have lower SFRs than the field sample. We are led to conclude that the environmental position of these galaxies is not affecting their SFRs, and that mass quenching is the dominant mode of star formation cessation in galaxies of this mass range.

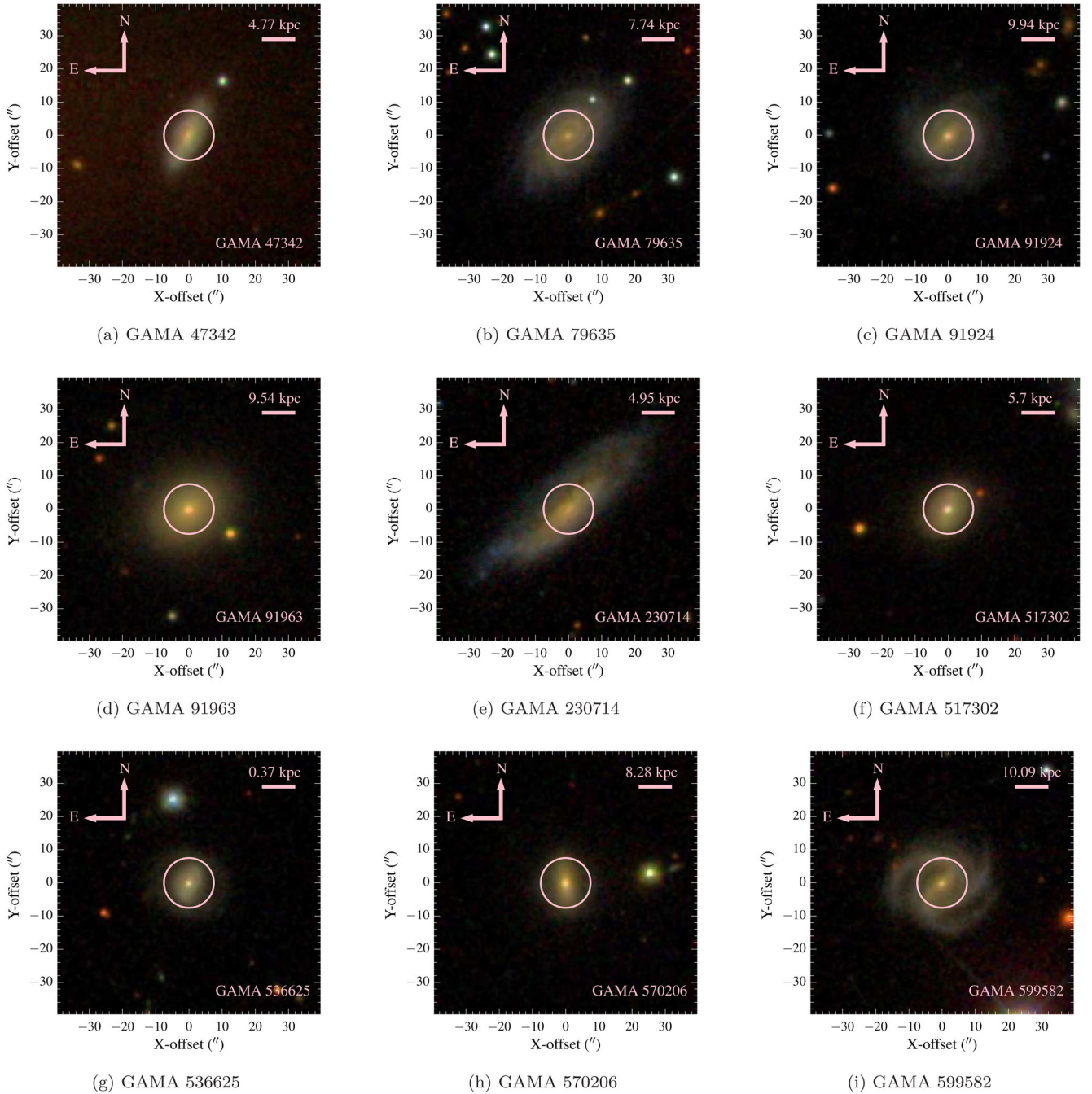


Figure 12. SDSS colour images of the nine SAMI EDR field galaxies in the sample with the SAMI field of view overlaid in pink.

ACKNOWLEDGEMENTS

The authors wish to thank the referee, whose thoughtful comments and suggestions have improved the quality of this work. They also wish to thank John Stott and Mehmet Alpaslan for helpful discussions on this work. The authors are grateful for the help of Adam Schaefer and Scott Croom with the SAMI EDR data, and Nicola Pastorello for initial software guidance. AFM acknowledges support from an Australian Postgraduate Award (APA), and a J. L. William postgraduate award. SJP acknowledges postdoctoral funding from the University of Portsmouth.

GAMA is a joint European-Australasian project based around a spectroscopic campaign using the Anglo-Australian Telescope. The

GAMA input catalogue is based on data taken from the SDSS and the UKIRT Infrared Deep Sky Survey. Complementary imaging of the GAMA regions is being obtained by a number of independent survey programmes including *GALEX* MIS, VST KiDS, VISTA VIKING, *WISE*, *Herschel*-ATLAS, GMRT and ASKAP providing UV to radio coverage. GAMA is funded by the STFC (UK), the ARC (Australia), the AAO, and the participating institutions. The GAMA website is <http://www.gama-survey.org/>.

The SAMI Galaxy Survey is based on observations made at the Anglo-Australian Telescope. The Sydney-AAO Multi-object Integral field spectrograph (SAMI) was developed jointly by the University of Sydney and the Australian Astronomical

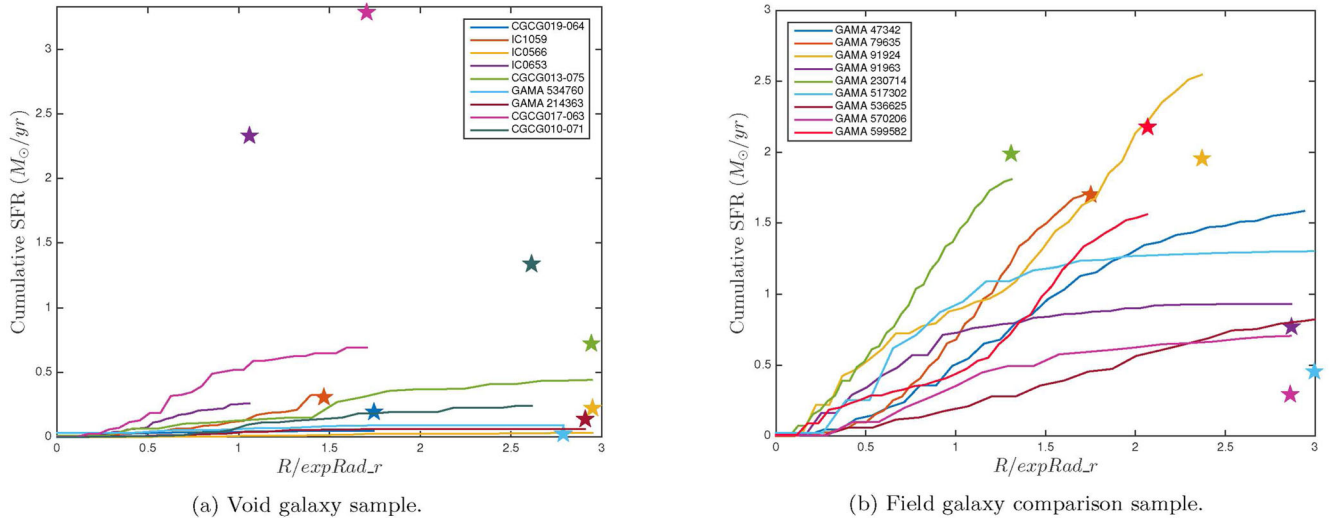


Figure 13. Cumulative $H\alpha$ -derived SFRs for the nine galaxies in the void galaxy sample and the SAMI comparison sample (coloured lines) and *WISE* W3 total integrated SFRs (stars) where available. All integrated SFRs are calculated to be $<1 M_{\odot} \text{yr}^{-1}$ for the void galaxy sample, and $<3 M_{\odot} \text{yr}^{-1}$ for the SAMI sample, truncated at $3 \times \text{expRad}_r$ where required. While on average, the field galaxy integrated SFRs are higher, flux calibration issues and disc regions missed due to low S:N of the void galaxy sample should be taken into account. The two galaxies with the highest discrepancies between $H\alpha$ and *WISE* W3 SFRs were only observed out to 1 and 1.5 expRad_r . The superior S:N of the SAMI galaxies means they are often measured out past 2 expRad_r . When instead the *WISE* $12\mu\text{m}$ SFRs are compared, both samples have a very similar spread in SFR, leading us to conclude there is no significant difference between the void and field sample SFRs.

Observatory. The SAMI input catalogue is based on data taken from the SDSS, the GAMA Survey and the VST ATLAS Survey. The SAMI Galaxy Survey is funded by the Australian Research Council Centre of Excellence for All-sky Astrophysics (CAASTRO), through project number CE110001020, and other participating institutions. The SAMI Galaxy Survey website is <http://sami-survey.org/>.

Funding for the SDSS IV has been provided by the Alfred P. Sloan Foundation, the US Department of Energy Office of Science, and the Participating Institutions. SDSS-IV acknowledges support and resources from the Center for High-Performance Computing at the University of Utah. The SDSS website is www.sdss.org.

REFERENCES

- Abazajian K. N. et al., 2009, *ApJS*, 182, 543
 Allen J. T. et al., 2015, *MNRAS*, 446, 1567
 Alpaslan M. et al., 2014, *MNRAS*, 440, L106
 Aragón-Calvo M. A., van de Weygaert R., Jones B. J. T., 2010, *MNRAS*, 408, 2163
 Baldry I. K., Glazebrook K., 2003, *ApJ*, 593, 258
 Baldry I. K., Glazebrook K., Brinkmann J., Ivezić Ž., Lupton R. H., Nichol R. C., Szalay A. S., 2004, *ApJ*, 600, 681
 Baldry I. K., Balogh M. L., Bower R. G., Glazebrook K., Nichol R. C., Bamford S. P., Budavari T., 2006, *MNRAS*, 373, 469
 Baldwin J. A., Phillips M. M., Terlevich R., 1981, *PASP*, 93, 5
 Beygu B., Kreckel K., van de Weygaert R., van der Hulst J. M., van Gorkom J. H., 2013, *AJ*, 145, 120
 Beygu B., Kreckel K., van der Hulst J. M., Jarrett T. H., Peletier R., van de Weygaert R., van Gorkom J. H., Aragón-Calvo M. A., 2016, *MNRAS*, 458, 394
 Bonne N. J., Brown M. J. I., Jones H., Pimblett K. A., 2015, *ApJ*, 799, 160
 Brough S. et al., 2013, *MNRAS*, 435, 2903
 Bryant J. J. et al., 2015, *MNRAS*, 447, 2857
 Bundy K. et al., 2015, *ApJ*, 798, 7
 Calzetti D., 2001, *PASP*, 113, 1449
 Cappellari M., Copin Y., 2003, *MNRAS*, 342, 345
 Cappellari M., Emsellem E., 2004, *PASP*, 116, 138
 Cardelli J. A., Clayton G. C., Mathis J. S., 1989, *ApJ*, 345, 245
 Cen R., 2011, *ApJ*, 741, 99
 Childress M. J., Vogt F. P. A., Nielsen J., Sharp R. G., 2014, *Ap&SS*, 349, 617
 Cid Fernandes R., Stasińska G., Mateus A., Vale Asari N., 2011, *MNRAS*, 413, 1687
 Cluver M. E. et al., 2014, *ApJ*, 782, 90
 Constantin A., Hoyle F., Vogeley M. S., 2008, *ApJ*, 673, 715
 Croom S. M. et al., 2012, *MNRAS*, 421, 872
 Croton D. J. et al., 2006, *MNRAS*, 365, 11
 Das M., Saito T., Iono D., Honey M., Ramya S., 2015, *ApJ*, 815, 40
 Dekel A., Birnboim Y., 2006, *MNRAS*, 368, 2
 Deng X.-F., He J.-Z., Wu P., 2008, *A&A*, 484, 355
 Dopita M., Hart J., McGregor P., Oates P., Bloxham G., Jones D., 2007, *Ap&SS*, 310, 255
 Dopita M. et al., 2010, *Ap&SS*, 327, 245
 Driver S. P. et al., 2011, *MNRAS*, 413, 971
 Fukugita M. et al., 2007, *AJ*, 134, 579
 Geha M., Blanton M. R., Yan R., Tinker J. L., 2012, *ApJ*, 757, 85
 Grogin N. A., Geller M. J., 2000, *AJ*, 119, 32
 Gunawardhana M. L. P. et al., 2013, *MNRAS*, 433, 2764
 Gunn J. E., Gott J. R., III, 1972, *ApJ*, 176, 1
 Hirschmann M., De Lucia G., Iovino A., Cucciati O., 2013, *MNRAS*, 433, 1479
 Hopkins A. M. et al., 2013, *MNRAS*, 430, 2047
 Hoyle F., Vogeley M. S., 2002, *ApJ*, 566, 641
 Hoyle F., Vogeley M. S., 2004, *ApJ*, 607, 751
 Hoyle F., Rojas R. R., Vogeley M. S., Brinkmann J., 2005, *ApJ*, 620, 618
 Hoyle F., Vogeley M. S., Pan D., 2012, *MNRAS*, 426, 3041
 Jarrett T. H. et al., 2011, *ApJ*, 735, 112
 Kauffmann G. et al., 2003, *MNRAS*, 341, 54
 Kennicutt R. C., Jr, 1998, *ARA&A*, 36, 189
 Kewley L. J., Groves B., Kauffmann G., Heckman T., 2006, *MNRAS*, 372, 961
 Kreckel K., Platen E., Aragón-Calvo M. A., van Gorkom J. H., van de Weygaert R., van der Hulst J. M., Beygu B., 2012, *AJ*, 144, 16

- Liu C.-X., Pan D. C., Hao L., Hoyle F., Constantin A., Vogeley M. S., 2015, *ApJ*, 810, 165
- Masters K. L. et al., 2010, *MNRAS*, 405, 783
- Masters K. L. et al., 2011, *MNRAS*, 411, 2026
- Moore B., Katz N., Lake G., Dressler A., Oemler A., 1996, *Nature*, 379, 613
- Moorman C. M., Vogeley M. S., Hoyle F., Pan D. C., Haynes M. P., Giovanelli R., 2015, *ApJ*, 810, 108
- Moorman C. M., Moreno J., White A., Vogeley M. S., Hoyle F., Giovanelli R., Haynes M. P., 2016, preprint ([arXiv:1601.04092](https://arxiv.org/abs/1601.04092))
- Nair P. B., Abraham R. G., 2010, *ApJS*, 186, 427
- Oliva-Altamirano P. et al., 2014, *MNRAS*, 440, 762
- Pan D. C., Vogeley M. S., Hoyle F., Choi Y.-Y., Park C., 2012, *MNRAS*, 421, 926
- Park C., Choi Y.-Y., Vogeley M. S., Gott J. R., III, Blanton M. R., SDSS Collaboration, 2007, *ApJ*, 658, 898
- Penny S. J. et al., 2015, *MNRAS*, 453, 3519
- Platen E., van de Weygaert R., Jones B. J. T., 2008, *MNRAS*, 387, 128
- Pracy M. B., Owers M. S., Zwaan M., Couch W., Kuntschner H., Croom S. M., Sadler E. M., 2014, *MNRAS*, 443, 388
- Ricciardelli E., Cava A., Varela J., Quilis V., 2014, *MNRAS*, 445, 4045
- Richards S. N. et al., 2016, *MNRAS*, 455, 2826
- Robotham A. S. G. et al., 2011, *MNRAS*, 416, 2640
- Rojas R. R., Vogeley M. S., Hoyle F., Brinkmann J., 2004, *ApJ*, 617, 50
- Rojas R. R., Vogeley M. S., Hoyle F., Brinkmann J., 2005, *ApJ*, 624, 571
- Sage L. J., Weistrop D., Cruzen S., Kompe C., 1997, *AJ*, 114, 1753
- Salpeter E. E., 1955, *ApJ*, 121, 161
- Sharp R. et al., 2015, *MNRAS*, 446, 1551
- Springel V., Di Matteo T., Hernquist L., 2005, *ApJ*, 620, L79
- Taylor E. N. et al., 2011, *MNRAS*, 418, 1587
- Toomre A., Toomre J., 1972, *ApJ*, 178, 623
- Valdes F., Gupta R., Rose J. A., Singh H. P., Bell D. J., 2004, *ApJS*, 152, 251
- von Benda-Beckmann A. M., Müller V., 2008, *MNRAS*, 384, 1189
- Wijesinghe D. B. et al., 2011, *MNRAS*, 410, 2291

APPENDIX A: NOTES ON INDIVIDUAL VOID GALAXIES OBSERVED

We discuss each galaxy observed for this work in detail.

A1 IC 0566

This galaxy has an obvious merger remnant in the tidal tail located in the south-west corner. It is classified as lenticular by Nair & Abraham (2010). The negligible $H\alpha$ emission at the centre of the galaxy coupled with a low SFR of $0.03 M_{\odot} \text{ yr}^{-1}$ implies the recent merger was dry. Gas kinematics show that the galaxy has not yet virialized after this merger, though the regular rotation of the stellar component suggests this was a minor merger. While it seems this galaxy is not evolving in isolation, the stellar rotation curve implies until recently, this galaxy was discy.

A2 CGCG 010-071

Nair & Abraham (2010) classify this galaxy as an edge-on, barred Sa galaxy with a T-type of 1. The stellar velocity map shows regular rotation, and while the gas is still rotating in the same general direction, it is disturbed slightly in the central region, likely by the bar structure. Balmer and forbidden emission line ratio maps show a higher fraction of line emission in the disc region, with lower levels in the central bulge region. The low SFR of $0.24 M_{\odot} \text{ yr}^{-1}$ lead us to classify this galaxy as a secularly evolving red spiral.

A3 GAMA 214363

This galaxy has no published classifications, but using Sloan imaging we classify this galaxy as lenticular. $H\alpha$ and other emission lines have little to no emission in the central region of the galaxy. Gas and stellar kinematics line up well for this galaxy, and along with its low SFR and disc nature, we again classify it as a secularly evolving disc galaxy.

A4 GAMA 534760

At $z = 0.052$, this galaxy is the highest redshift galaxy in our sample. Fukugita et al. (2007) classify this galaxy as lenticular. Line emission is concentrated in the outer regions of the galaxy, and regular rotation lines up both the gas and stellar kinematics. Given the slightly higher redshift, but similar stellar mass of this galaxy, it seems to be comparably more evolved compared to its discy counterparts.

A5 CGCG 013-075

This galaxy is a face-on, disc-dominated, barred spiral galaxy. This galaxy possesses blue spiral arms, and the SFR is low in the inner regions, then increases out past an exponential radius, highlighting the importance of studying a galaxy out past its effective radius. Stellar and gas kinematics match up well, indicating no recent merger activity. BPT and WHAN diagrams both agree that this galaxy is likely to be hosting an AGN. This, coupled with the moderate SFR means this is the most active galaxy in our void sample. It is possible the star formation in the spiral arms is being fuelled by infalling gas perhaps from a filament or tendrils extending into the void.

A6 CGCG019-064

This is the only galaxy with a higher relative $H\alpha$ concentration in the core region than the outskirts. The emission line flux maps follow that of the $H\alpha$ map, showing a higher concentration of every emission line besides $H\gamma$ in the central regions of the galaxy, unlike the rest of our sample. The high $[O III]$ concentration in the centre is indicative of AGN activity, and while the BPT diagram reinforces this, the WHAN diagram places the galaxy in the retired region by virtue of the small $H\alpha$ EWs. Despite this, we expect this galaxy to possess a (likely weak) AGN.

A7 IC 1059

This galaxy is another archetypal example of a discy void galaxy. This galaxy comprises a red bulge region, with an outer disc of younger stellar population. NASA Sloan Atlas¹ r -band Sérsic fit residuals show a ring surrounding the nucleus, possibly the result of a minor merger. The Sérsic number is 3.9 and we classify this galaxy as a lenticular. The stellar and gas kinematics match up well as shown in Fig. 6, indicating no recent mergers. The characteristic emission line ratios for Balmer lines, $[N II]$ and $[O III]$ show low levels of emission in the centre, and higher rings of emission surrounding, all reminiscent of a galaxy with a red and passive centre, but a younger, more active outer region. The symmetry of the emission line ring surrounding the nucleus suggests infalling gas as the mechanism for star formation.

¹ <http://www.nsatlas.org/>

A8 IC 0653

This galaxy has the largest angular size in our sample, so we probe the inner regions in extreme detail, out to half an exponential fit radius. The morphology of this galaxy is again a red spiral, with an inclined axis ratio. The emission line maps have the best S:N of our sample and again show less emission in the central regions compared to the outskirts. We measure a SFR of $0.26 M_{\odot} \text{ yr}^{-1}$, which would likely be higher and closer to the *WISE* mid-IR value if we had probed out further into the disc regions of the galaxy. A WHAN diagram confirms the central regions of the galaxy are passive, with more star-forming regions being located towards the outskirts of the disc. Gas and stellar kinematics match up very well, implying no recent mergers. This, coupled with the visible spiral arms and lack of star formation, lead us to classify this galaxy as a red spiral, secularly evolving in isolation.

A9 CGCG 017-063

This galaxy is a face-on spiral galaxy with properties typical of the rest of the void galaxy population. Emission line maps show

lower levels of $H\alpha$ emission in the central regions of the galaxy compared to the outer disc. This is true also for the other Balmer lines, [O III] and [N III]. A BPT diagram places the central spaxels in the AGN+SF region and the outer regions in the purely star-forming region. We deduce the likelihood of AGN activity is low in this galaxy. This is confirmed by the WHAN diagram, which places the central regions of the galaxy in the passive/retired region, with the outskirts again into the star-forming region. We observe this galaxy out to five exponential fit radii, with a total integrated $H\alpha$ SFR of $0.70 M_{\odot} \text{ yr}^{-1}$. We conclude this galaxy is an anaemic red spiral.

This paper has been typeset from a $\text{\TeX}/\text{\LaTeX}$ file prepared by the author.