

# Galaxy Zoo 2: detailed morphological classifications for 304 122 galaxies from the Sloan Digital Sky Survey

Kyle W. Willett,<sup>1\*</sup> Chris J. Lintott,<sup>2,3</sup> Steven P. Bamford,<sup>4</sup> Karen L. Masters,<sup>5,6</sup>  
Brooke D. Simmons,<sup>2</sup> Kevin R. V. Casteels,<sup>7</sup> Edward M. Edmondson,<sup>5</sup>  
Lucy F. Fortson,<sup>1</sup> Sugata Kaviraj,<sup>2,8</sup> William C. Keel,<sup>9</sup> Thomas Melvin,<sup>5</sup>  
Robert C. Nichol,<sup>5,6</sup> M. Jordan Raddick,<sup>10</sup> Kevin Schawinski,<sup>11</sup> Robert J. Simpson,<sup>2</sup>  
Ramin A. Skibba,<sup>12</sup> Arfon M. Smith<sup>3</sup> and Daniel Thomas<sup>5,6</sup>

<sup>1</sup>*School of Physics and Astronomy, University of Minnesota, 116 Church St SE, Minneapolis, MN 55455, USA*

<sup>2</sup>*Oxford Astrophysics, Denys Wilkinson Building, Keble Road, Oxford OX1 3RH, UK*

<sup>3</sup>*Adler Planetarium, 1300 S. Lake Shore Drive, Chicago, IL 60605, USA*

<sup>4</sup>*School of Physics and Astronomy, The University of Nottingham, University Park, Nottingham NG7 2RD, UK*

<sup>5</sup>*Institute of Cosmology and Gravitation, University of Portsmouth, Dennis Sciama Building, Portsmouth PO1 3FX, UK*

<sup>6</sup>*SEPnet, South East Physics Network, UK*

<sup>7</sup>*Institut de Ciències del Cosmos, Universitat de Barcelona (UB-IEEC), Martí i Franquès 1, E-08028 Barcelona, Spain*

<sup>8</sup>*Centre for Astrophysics Research, University of Hertfordshire, College Lane, Hatfield AL10 9AB, UK*

<sup>9</sup>*Department of Physics and Astronomy, University of Alabama, Box 870324, Tuscaloosa, AL 35487, USA*

<sup>10</sup>*Department of Physics and Astronomy, The Johns Hopkins University, Homewood Campus, Baltimore, MD 21218, USA*

<sup>11</sup>*Institute for Astronomy, Department of Physics, ETH Zürich, Wolfgang-Pauli-Strasse 16, CH-8093 Zürich, Switzerland*

<sup>12</sup>*Center for Astrophysics and Space Sciences, University of California San Diego, 9500 Gilman Dr., San Diego, CA 92093, USA*

Accepted 2013 August 2. Received 2013 July 31; in original form 2013 June 17

## ABSTRACT

We present the data release for Galaxy Zoo 2 (GZ2), a citizen science project with more than 16 million morphological classifications of 304 122 galaxies drawn from the Sloan Digital Sky Survey (SDSS). Morphology is a powerful probe for quantifying a galaxy's dynamical history; however, automatic classifications of morphology (either by computer analysis of images or by using other physical parameters as proxies) still have drawbacks when compared to visual inspection. The large number of images available in current surveys makes visual inspection of each galaxy impractical for individual astronomers. GZ2 uses classifications from volunteer citizen scientists to measure morphologies for all galaxies in the DR7 Legacy survey with  $m_r > 17$ , in addition to deeper images from SDSS Stripe 82. While the original GZ2 project identified galaxies as early-types, late-types or mergers, GZ2 measures finer morphological features. These include bars, bulges and the shapes of edge-on disks, as well as quantifying the relative strengths of galactic bulges and spiral arms. This paper presents the full public data release for the project, including measures of accuracy and bias. The majority ( $\gtrsim 90$  per cent) of GZ2 classifications agree with those made by professional astronomers, especially for morphological T-types, strong bars and arm curvature. Both the raw and reduced data products can be obtained in electronic format at <http://data.galaxyzoo.org>.

**Key words:** methods: data analysis – catalogues – galaxies: elliptical and lenticular – galaxies: general – galaxies: spiral.

## 1 INTRODUCTION

The Galaxy Zoo project (Lintott et al. 2008) was launched in 2007 to provide morphological classifications for nearly one million galax-

ies drawn from the Sloan Digital Sky Survey (SDSS; York et al. 2000) Main Galaxy Sample (Strauss et al. 2002). This scale of effort was made possible by combining classifications from hundreds of thousands of volunteers via a web-based interface. In order to keep the task at a manageable level of complexity, only the most basic morphological distinctions were requested, enabling the separation of systems into categories of elliptical (early-type), spiral

\*E-mail: willett@physics.umn.edu

(late-type) and mergers.<sup>1</sup> Following the success of this project (Lintott et al. 2008, 2011), the same methodology of asking for volunteer classifications was launched in 2009 with a more complex classification system. This paper presents data and results from this second incarnation of Galaxy Zoo, called Galaxy Zoo 2 (GZ2). These data comprise detailed morphologies for more than 300 000 of the largest and brightest SDSS galaxies.<sup>2</sup>

While the morphological distinction used in the original Galaxy Zoo – that which divides spiral and elliptical systems – is the most fundamental, the motivation for GZ2 was that galaxies demonstrate a much wider variety of morphological features. There is a long history of enhanced classifications (see Buta 2013 for a historical review), but the most well-known approach (Hubble 1926) included a division between barred and unbarred spirals, resulting in the famous ‘tuning fork’ diagram. Furthermore, distinctions ordered ellipticals based on their apparent roundness and spirals on a combination of tightness and distinction of the arms and size of the central bulge. Along the late-type sequence, these traits are often correlated with physical parameters of the systems being studied (Roberts & Haynes 1994), with spirals becoming (on average) redder, more massive, and less gas-rich for ‘earlier’ locations in the sequence.

Morphological features can clearly provide insights into the physical processes that shape the evolution of galaxies. Most obviously, merger features reveal ongoing gravitational interactions, but even the presence of a central bulge in a disk galaxy is likely to indicate a history of mass assembly through significant mergers (Martig et al. 2012 and references therein). On the other hand, galactic bars and rings reveal details of slower, secular evolution and stellar orbital resonances. For example, bars, are known to drive gas inwards and are related to the growth of a central bulge (reviews are given in Kormendy & Kennicutt 2004; Masters et al. 2011). Careful classifications of morphological features are thus essential if the assembly and evolution history of galaxies is to be fully understood.

Traditional morphological classification relied on visual inspection of small numbers of images by experts (e.g. Sandage 1961; de Vaucouleurs et al. 1991; Sandage & Bedke 1994; Buta 1995; Buta, Corwin & Odewahn 2002). However, the sheer size of modern data sets (such as the SDSS Main Galaxy Sample) make this approach impractical. Detailed classifications of limited sub-sets of SDSS images have been made through huge efforts of a small number of experts. Fukugita et al. (2007) and Baillard et al. (2011) determined modified Hubble types for samples of 2253 and 4458 galaxies, respectively; the largest such effort to date is Nair & Abraham (2010), who provide detailed classifications of 14 034 galaxies. GZ2 includes more than an order of magnitude more systems than any of these. Furthermore, each galaxy has a large number of independent inspections, which permits estimates of the classification likelihood (and in some cases the strength of the feature in question). The size of GZ2 allows for a more complete study of small-scale morphological features and their correlation with many other galaxy properties (e.g. mass, stellar and gas content, environment), while providing better statistics for the rarest objects.

The use of proxies for morphology – such as colour, concentration index, spectral features, surface brightness profile, structural features, spectral energy distribution or some combination of these –

is a common practice in astronomy. However, proxies are not an adequate substitute for full morphological classification, as each has an unknown and likely biased relation with the features being studied. For example, most ellipticals are red and most spirals are blue; however, interesting sub-sets of both types have been found with the opposite colour (Schawinski et al. 2009; Masters et al. 2010). With a sufficiently large set of galaxies, the diversity of the local population can be fully sampled and the relationship between morphology and proxies can be quantified.

Automated morphological classification is becoming much more sophisticated, driven in part by the availability of large training sets from the original Galaxy Zoo (Banerji et al. 2010; Huertas-Company et al. 2011; Davis & Hayes 2013). However, these methods do not yet provide an adequate substitute for classification by eye. In particular, as Lintott et al. (2011) note, such efforts typically use proxies for morphology as their input (especially colour), meaning they suffer from the objections raised above. The release of the GZ2 data set will be of interest to those developing such machine learning and computer vision systems.

The GZ2 results were made possible by the participation of hundreds of thousands of volunteer ‘citizen scientists’. The original Galaxy Zoo demonstrated the utility of this method in producing both large-scale catalogues as well as serendipitous discoveries of individual objects (see Lintott et al. 2011; Fortson et al. 2012 for reviews of Galaxy Zoo results). Since then, this method has been expanded beyond galaxy morphologies to include supernova identification (Smith et al. 2011), exoplanet discovery (Fischer et al. 2012; Schwamb et al. 2012) and a census of bubbles associated with star formation in the Milky Way (Kendrew et al. 2012; Simpson et al. 2012), as well as a variety of ‘big data’ problems outside of astronomy.<sup>3</sup>

Several results based on early GZ2 data have already been published. Masters et al. (2011, 2012) use GZ2 bar classifications to measure a clear increase in bar fraction for galaxies with redder colours, lower gas fractions and more prominent bulges. Hoyle et al. (2011) showed that the bars themselves are both redder and longer in redder disk galaxies. Skibba et al. (2012) demonstrated that a significant correlation exists between barred and bulge-dominated galaxies at separations from 0.15 to 3 Mpc. Kaviraj et al. (2012) used GZ2 to study early-type galaxies with visible dust lanes, while Simmons et al. (2013) discovered a population of active galactic nucleus (AGN) host galaxies with no bulge, illustrating how black holes can grow and accrete via secular processes. Finally, Casteels et al. (2013) quantify morphological signatures of interaction (including mergers, spiral arms and bars) for galaxy pairs in the SDSS. This paper describes the data used in these studies, and goes further by quantifying and adjusting for classification biases and in comparing GZ2 classifications with other results.

This paper is organized as follows. Section 2 describes the sample selection and method for collecting morphological classifications. Section 3 outlines the data reduction and debiasing process, and Section 4 describes the tables that comprise the public data release. Section 5 is a detailed comparison of GZ2 to four additional morphological catalogues that were created with SDSS imaging. We summarize our results in Section 6.

This paper uses the cosmological parameters of  $H_0 = 71.8 \text{ km s}^{-1} \text{ Mpc}^{-1}$ ,  $\Omega_m = 0.273$  and  $\Omega_\Lambda = 0.727$  (Hinshaw et al. 2012).

<sup>1</sup> Galaxy Zoo is archived at <http://zoo1.galaxyzoo.org>.

<sup>2</sup> The Galaxy Zoo 2 site is archived at <http://zoo2.galaxyzoo.org>.

<sup>3</sup> See <http://www.zooniverse.org/> for the full collection.

## 2 PROJECT DESCRIPTION

### 2.1 Sample selection

The primary sample of objects used in GZ2 comprise approximately the brightest 25 per cent of the resolved galaxies in the SDSS North Galactic Cap region. The sample is generated from the SDSS Data Release 7 (DR7) ‘Legacy’ catalogue (Abazajian et al. 2009), and therefore excludes observations made by SDSS for other purposes, such as the SEGUE survey. Spectroscopic targets come from the SDSS Main Galaxy Sample (Strauss et al. 2002).

Several cuts on the data were applied to the DR7 Legacy sample for selection in GZ2. The goal was to include only the nearest, brightest and largest systems for which fine morphological features can be resolved and classified. GZ2 required a Petrosian half-light magnitude brighter than 17.0 in the  $r$  band (after Galactic extinction correction was applied), along with a size limit of  $\text{petroR90}_r > 3$  arcsec ( $\text{petroR90}_r$  is the radius containing 90 per cent of the  $r$ -band Petrosian aperture flux). Galaxies which had a spectroscopic redshift in the DR7 catalogue outside the range  $0.0005 < z < 0.25$  were removed; however, galaxies without reported redshifts were kept. Finally, objects which are flagged by the SDSS pipeline as SATURATED, BRIGHT or BLENDED without an accompanying NODEBLEND flag were also excluded. The 245 609 galaxies satisfying all these criteria are referred to as the ‘original’ sample.

An error in the selection query meant that the ‘original’ sample initially missed objects to which the SDSS photometric pipeline (Stoughton et al. 2002) assigned both BLENDED and CHILD flags. These are objects that have been deblended from a larger blend (hence CHILD), and have been identified as blended themselves (hence BLENDED; due to containing multiple peaks). However, these are ‘final’ objects, as the SDSS deblender does not attempt to further deblend already deblended objects. These galaxies, which are typically slightly brighter, larger and bluer than the general population, were added to the GZ2 site on 2009-09-02. These additional 28 174 galaxies are referred to as the ‘extra’ sample.

In addition to galaxies from the DR7 Legacy, GZ2 also classified images from Stripe 82, a multiply imaged section along the celestial equator in the Southern Galactic Cap. The selection criteria were the same as for the Legacy galaxies, with the exception of a fainter magnitude limit of  $m_r < 17.77$ . For the Stripe 82 sample only, GZ2 includes multiple images of individual galaxies: one set of images at single exposure depth, plus two sets of co-added images from multiple exposures. The co-added images combined 47 (south) or 55 (north) individual scans of the region, resulting in an object detection limit approximately two magnitudes lower than in normal imaging (Annis et al. 2011).

The primary sample for GZ2 analysis consists of the combined ‘original’, ‘extra’ and Stripe 82 normal-depth images with  $m_r \leq 17.0$ . We have verified that there are no significant differences in the classifications between these sub-samples (i.e. no significant bias is introduced by the fact that they were classified at different times) and thus can be reliably used as a single data set. This is hereafter referred to as the GZ2 main sample (Table 1), and is used for the bulk of the analysis in this paper. Data from both the Stripe 82 normal-depth images with  $m_r > 17.0$  and the two sets of co-added images are separately included in this data release.

### 2.2 Image creation

Images of galaxies for classification were generated from the SDSS ImgCutout web service (Nieto-Santisteban, Szalay & Gray 2004)

**Table 1.** Basic properties of the galaxy samples in GZ2, including the total number of galaxies ( $N_{\text{gal}}$ ), the median number of classifications per galaxy ( $N_{\text{class}}$ ) and the apparent magnitude limit.

Sample	$N_{\text{gal}}$	$N_{\text{class}}$ (median)	$m_r$ (mag)
Original	245 609	44	17.0
Extra	28 174	41	17.0
Stripe 82 normal	21 522	45	17.77
Stripe 82 normal ( $m_r < 17$ )	10 188	45	17.0
Stripe 82 co-add 1	30 346	18	17.77
Stripe 82 co-add 2	30 339	21	17.77
Main	283 971	44	17.0
Original + Extra + S82 ( $m_r < 17$ )			

from the Legacy and Stripe 82 normal-depth surveys. Each image is a  $gri$  colour composite  $424 \times 424$  pixels in size, scaled to  $(0.02 \times \text{petroR90}_r)$  arcsec per pixel.

Co-added images from Stripe 82 were generated from the corrected SDSS FITS frames. Frames were combined using Montage (Jacob et al. 2010) and converted to a colour image using a slightly modified version of the Skyserver asinh stretch code (Lupton et al. 2004), with parameters adjusted to replicate the normal SDSS colour balance. The parametrization of the stretch function used is

$$f(x) = \text{asinh}(\alpha Qx) / Q, \quad (1)$$

where  $Q = 3.5$  and  $\alpha = 0.06$ . The colour scaling is [1.000, 1.176, 1.818] in  $g$ ,  $r$  and  $i$ , respectively.

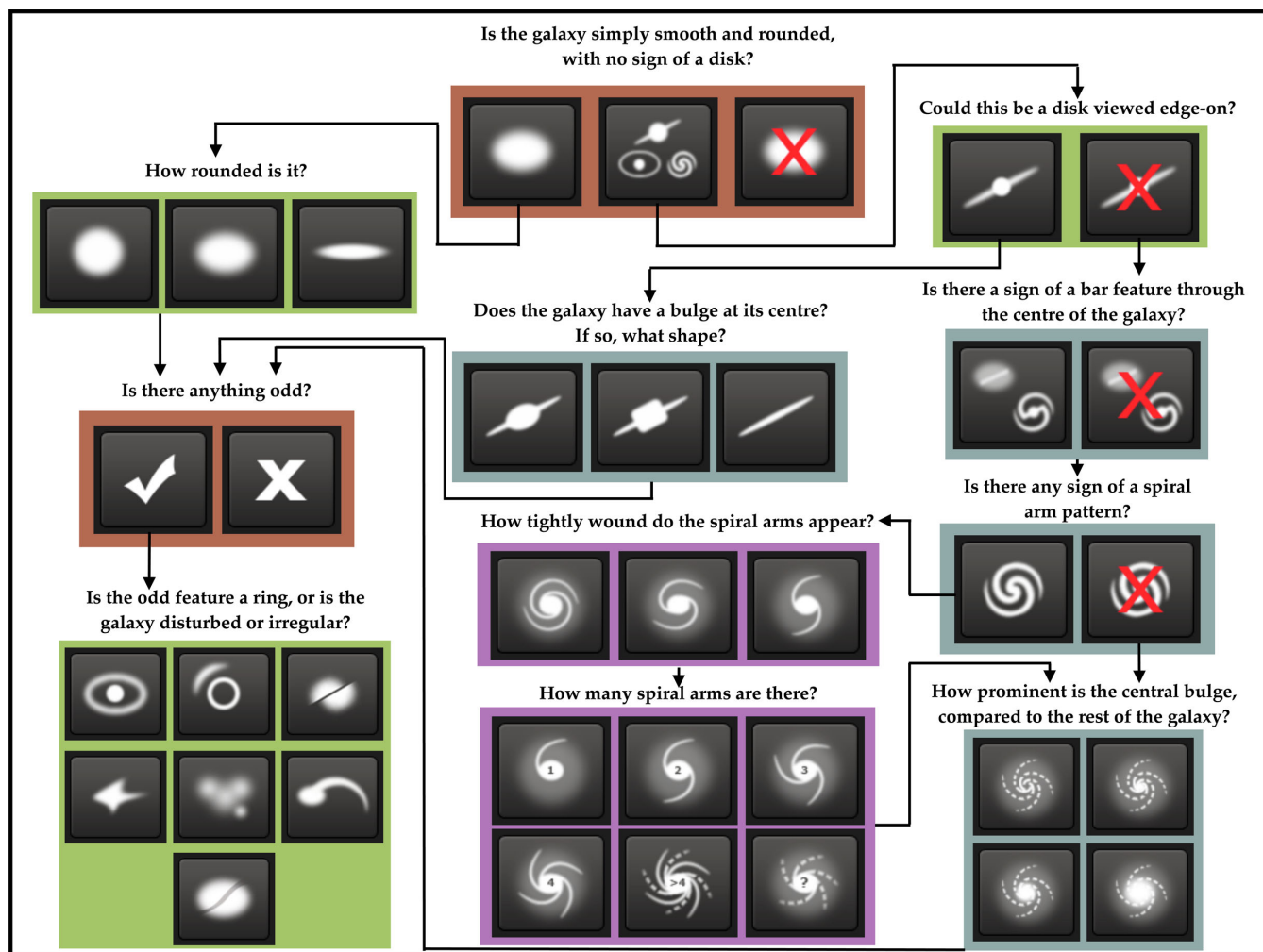
The first set of Stripe 82 co-added images were visually very different from the single-depth images. Changing the colour balance to maximize the visibility of faint features, however, resulted in more prominent background sky noise; since each pixel is typically dominated by a single band, the background is often brightly coloured by the Lupton et al. (2004) algorithm. Due to concerns that this noise would be an obvious sign that the images were from deeper data (potentially biasing the classifications), we created a second set of co-add images in which the colour of background pixels was removed. This was achieved by reducing the colour saturation of pixels outside of a soft-edged object mask.

The original and desaturated co-add image sets are labelled ‘stripe82\_coadd\_1’ and ‘stripe82\_coadd\_2’, respectively (Table 1). Subsequent analysis revealed very few differences between the classifications for the images using the two co-add methods (see Section 4.2).

### 2.3 Decision tree

Morphological data for GZ2 were collected via a web-based interface. Volunteers needed to register with a username for their classifications to be recorded. Like Galaxy Zoo, classification begins with the user being shown an SDSS colour composite image of a galaxy alongside a question and set of possible responses. More detailed data is then collected via a multistep decision tree. In this paper, a *classification* is defined as the total amount of information collected about one galaxy by a single user completing the decision tree. Each individual step in the tree is a *task*, which consists of a *question* and a finite set of possible *responses*. The selection of a particular response is referred to as the user’s *vote*.

The first GZ2 task is a slightly modified version of Galaxy Zoo, identifying whether the galaxy is either ‘smooth’, has ‘features or a disk’, or is a ‘star or artifact’. The appearance of subsequent tasks in



**Figure 1.** Flowchart of the classification tasks for GZ2, beginning at the top centre. Tasks are colour-coded by their relative depths in the decision tree. Tasks outlined in brown are asked of every galaxy. Tasks outlined in green, blue and purple are (respectively) one, two or three steps below branching points in the decision tree. Table 2 describes the responses that correspond to the icons in this diagram.

the interface depends on the user's previous responses. For example, if the user clicks on the 'smooth' button, they are subsequently asked to classify the roundness of the galaxy; this task would not be shown if they had selected either of the other two responses.

The GZ2 tree has 11 classification tasks with a total of 37 possible responses (Fig. 1 and Table 2). A classifier selects only one response for each task, after which they are immediately taken to the next task in the tree. Tasks 01 and 06 are the only questions that are always answered for each and every classification. Once a classification is complete, an image of the next galaxy is automatically displayed and the user can begin classification of a new object. Importantly, in no case could a volunteer choose which galaxy to classify.

Data from the classifications were stored in a live Structured Query Language (SQL) data base. In addition to the morphology classifications, the data base also recorded a timestamp, user identifier and image identifier for each classification.

#### 2.4 Site history

GZ2 launched on 2009-02-16 with the 'original' sample of 245 609 images. The 'extra' galaxies from the Legacy survey were added

on 2009-09-02. The normal-depth and the first set of co-added Stripe 82 images were mostly added on 2009-09-02, with an additional  $\sim 7700$  of co-added images added on 2010-09-24. Finally, the second version of the co-added images were added to the site on 2009-11-04.

For most of the duration of GZ2, images shown to classifiers were randomly selected from the data base. To ensure that each galaxy ultimately had enough responses to accurately characterize the likelihood of the classification, images with low numbers of classifications were shown at a higher rate towards the end of the project. The main sample galaxies finished with a median of 44 classifications; the minimum was 16, and  $>99.9$  per cent of the sample had at least 28 classifications. The 'stripe82\_coadd\_2' galaxies had a median of 21 classifications and  $>99.9$  per cent had at least 10 (Fig. 2).

The last GZ2 classifications were collected on 2010-04-29, with the project spanning just over 14 months. The archived site continued to be maintained, but classifications were no longer recorded. The final data set contains 16 340 298 classifications (comprising a total of 58 719 719 tasks) by 83 943 volunteers.

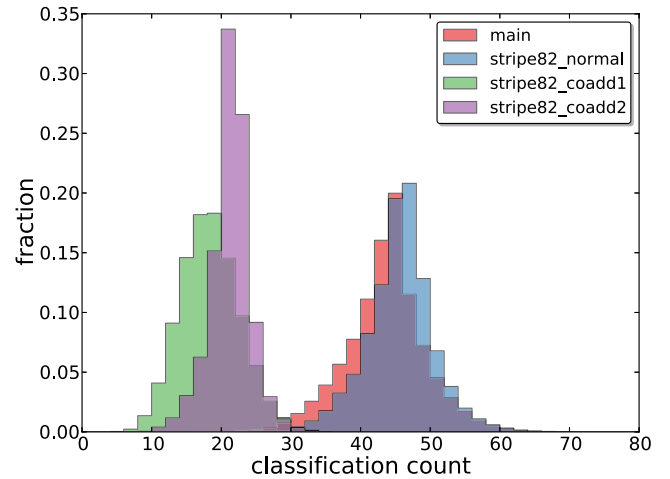
**Table 2.** The GZ2 decision tree, comprising 11 tasks and 37 responses. The ‘Task’ number is an abbreviation only and does *not* necessarily represent the order of the task within the decision tree. The text in ‘Question’ and ‘Responses’ are displayed to volunteers during classification, along with the icons in Fig. 1. ‘Next’ gives the subsequent task for the chosen response.

Task	Question	Responses	Next
01	<i>Is the galaxy simply smooth and rounded, with no sign of a disk?</i>	Smooth Features or disk Star or artifact	07 02 End
02	<i>Could this be a disk viewed edge-on?</i>	Yes No	09 03
03	<i>Is there a sign of a bar feature through the centre of the galaxy?</i>	Yes No	04 04
04	<i>Is there any sign of a spiral arm pattern?</i>	Yes No	10 05
05	<i>How prominent is the central bulge, compared with the rest of the galaxy?</i>	No bulge Just noticeable Obvious Dominant	06 06 06 06
06	<i>Is there anything odd?</i>	Yes No	08 End
07	<i>How rounded is it?</i>	Completely round In between Cigar-shaped	06 06 06
08	<i>Is the odd feature a ring, or is the galaxy disturbed or irregular?</i>	Ring Lens or arc Disturbed Irregular Other Merger Dust lane	End End End End End End End
09	<i>Does the galaxy have a bulge at its centre? If so, what shape?</i>	Rounded Boxy No bulge	06 06 06
10	<i>How tightly wound do the spiral arms appear?</i>	Tight Medium Loose	11 11 11
11	<i>How many spiral arms are there?</i>	1 2 3 4 More than four Can't tell	05 05 05 05 05 05

### 3 DATA REDUCTION

#### 3.1 Multiple classifications

In a small percentage of cases, individuals classified the same image more than once. In order to treat each vote as an independent measurement, classifications repeated by the same user were removed from the data, keeping only their votes from the last submission. Repeat classifications occurred for only  $\sim 1$  per cent of all galaxies. The removal of the repeats only changed the morphological classifications for  $\lesssim 0.01$  per cent of the sample.



**Figure 2.** Distribution of the number of classifications for the sub-samples within GZ2.

#### 3.2 Individual user weighting and combining classifications

The next step is to reduce the influence of potentially unreliable classifiers (whose classifications are consistent with random selection). To do so, an iterative weighting scheme (similar to that used for Galaxy Zoo) is applied. First, we calculated the vote fraction ( $f_r = n_r/n_i$ ) for every response to every task for every galaxy, weighting each user’s vote equally. Here,  $n_r$  is the number of votes for a given response and  $n_i$  is the total number of votes for that task. Each vote is compared to the vote fraction to calculate a user’s consistency  $\kappa$ :

$$\kappa = \frac{1}{N_r} \sum_{i=1}^{N_r} \kappa_i, \quad (2)$$

where  $N_r$  is the total number of possible responses for a task and

$$\kappa_i = \begin{cases} f_r & \text{if vote corresponds to this response,} \\ (1 - f_r) & \text{if vote does not correspond.} \end{cases} \quad (3)$$

For example, if a question has three possible responses, and the galaxy corresponds best to response  $a$ , then the vote fractions for responses  $(a, b, c)$  might be  $(0.7, 0.2, 0.1)$ .

(i) If an individual votes for response  $a$ , then  $\kappa = (0.7 + (1 - 0.2) + (1 - 0.1))/3 = 0.8$ .

(ii) If an individual votes for response  $b$ , then  $\kappa = ((1 - 0.7) + 0.2 + (1 - 0.1))/3 = 0.467$ .

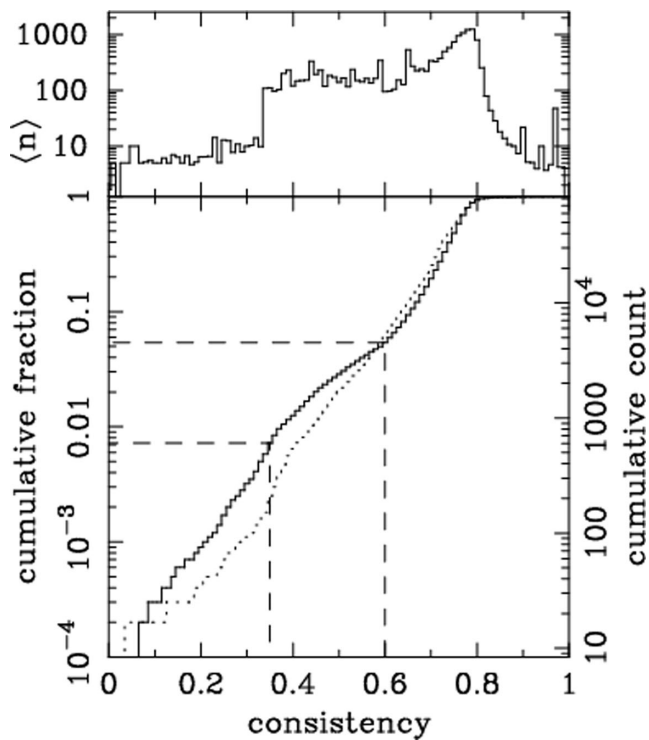
(iii) If an individual votes for response  $c$ , then  $\kappa = ((1 - 0.7) + (1 - 0.2) + 0.1)/3 = 0.4$ .

Votes which agree with the majority thus have high values of consistency, whereas votes which disagree have low values.

Each user was assigned an overall consistency ( $\bar{\kappa}$ ) by taking the mean consistency of every response. From the distribution of results for the initial iteration (Fig. 3), a weighting function is applied that down-weights classifiers in the tail of low consistency.

$$w = \min(1.0, (\bar{\kappa}/0.6)^{8.5}) \quad (4)$$

For this function,  $w = 1$  for  $\sim 95$  per cent of classifiers and  $w < 0.01$  for only  $\sim 1$  per cent of classifiers. The vast majority of classifiers are thus treated equally; there is no up-weighting of the most consistent classifiers. The top panel of Fig. 3 also shows that the lowest weighted classifiers completed only a handful ( $< 10$ ) of objects on



**Figure 3.** Distribution of the user consistency  $\kappa$ . Top: mean number of galaxies classified per user as a function of their consistency. Bottom: Cumulative distribution of consistency. The dotted line shows the first iteration of weighting, and the solid line the third iteration. The second iteration is not shown, but is almost identical to the third. Dashed lines indicate where the user weighting function takes values of 0.01 and 1.

average. This may demonstrate either that the volunteers are becoming more accurate as they classify more galaxies, or that inconsistent people are less likely to remain engaged with the project; further work on user behaviour is needed to distinguish between the two possibilities.

After computing  $\kappa$ , vote fractions were recalculated using the new user weights, and then repeated a third time to ensure convergence. For each task, individual responses are combined to produce the total vote count and a vote fraction for each task. The weighted votes and vote fractions generated by equation (4) are used exclusively hereafter when discussing GZ2 votes and vote fractions; for brevity, we typically drop the term ‘weighted’.

### 3.3 Classification bias

The vote fractions are adjusted for what is termed *classification bias*. The overall effect of this bias is a change in observed morphology fractions as a function of redshift *independent of any true evolution in galaxy properties*, a trend also seen in the Galaxy Zoo data (Bamford et al. 2009). The SDSS survey is expected to be shallow enough to justify an assumption of no evolution, and so the presumed cause is that more distant galaxies, on average, are both smaller and dimmer in the cutout images. As a result, finer morphological features are more difficult to identify. We note that this effect is not limited to crowd-sourced classifications; expert and automatic classifications must also suffer from bias to some degree, although smaller sample sizes make this difficult to quantify.

Fig. 4 demonstrates the effect of classification bias for the GZ2 tasks. The mean vote fraction for each response is shown as a function of redshift; the fraction of votes for finer morphological

features (such as identification of disk galaxies, spiral structure or galactic bars) decreases at higher redshift. The trend is strongest for the initial task of separating smooth and feature/disk galaxies, but almost all tasks exhibit some level of change.

Part of the observed trends in type fractions at high redshifts is due to the nature of a magnitude-limited sample; high-redshift galaxies must be more luminous to be detected in the SDSS and are thus most likely to be giant red ellipticals. However, there is clear evidence of classification bias in GZ2 even in luminosity-limited samples. Since this bias contaminates any potential studies of galaxy demographics over the sample volume, it must be corrected to the fullest possible extent.

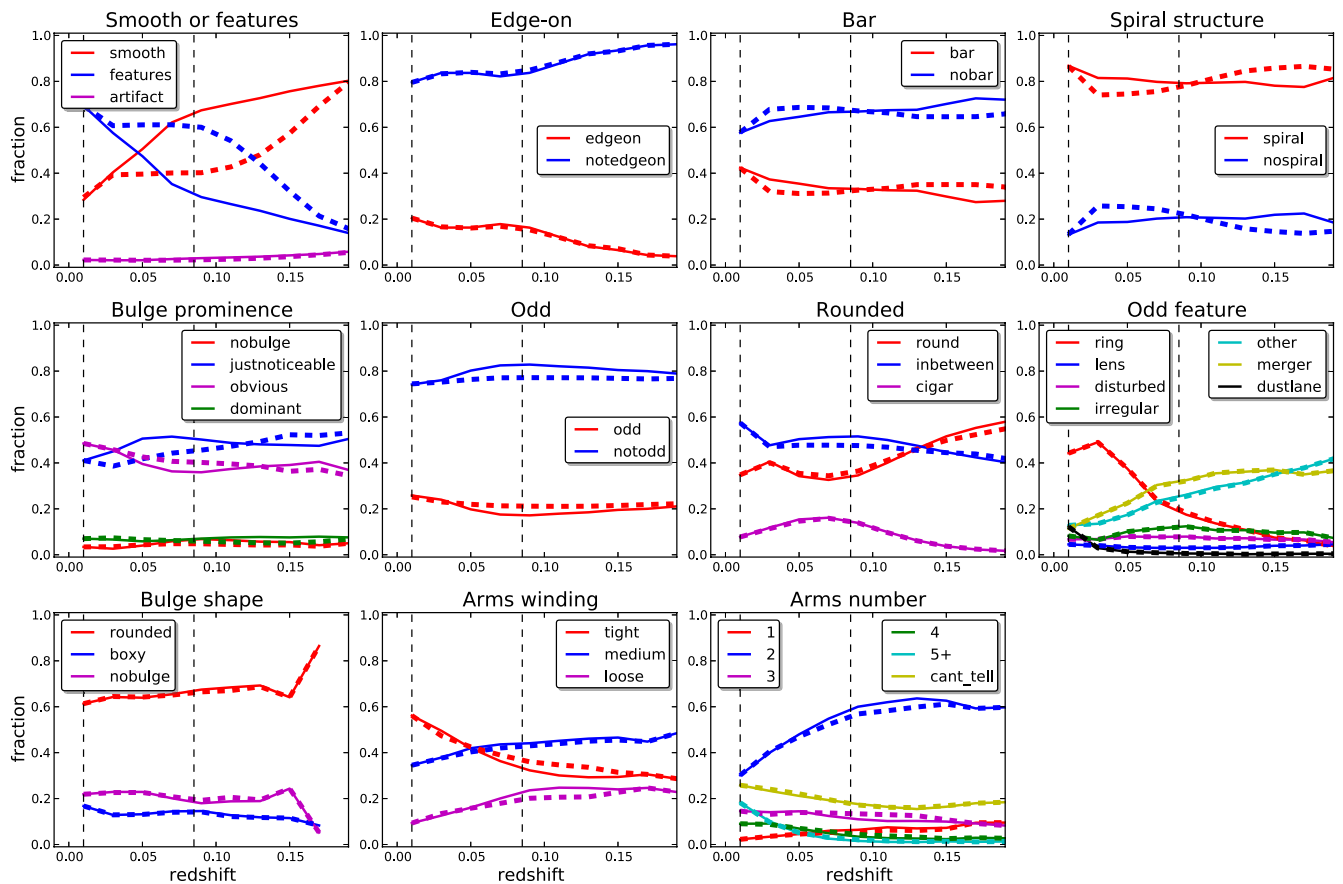
Bamford et al. (2009) corrected for classification bias in the Galaxy Zoo data for the elliptical and combined spiral classes. Their approach was to bin the galaxies as a function of absolute magnitude ( $M_r$ ), the physical Petrosian half-light radius ( $R_{50}$ ) and redshift. They then computed the average elliptical-to-spiral ratio for each ( $M_r$ ,  $R_{50}$ ) bin in the lowest redshift slice with significant numbers of galaxies; this yields a local baseline relation which gives the (presumably) unbiased morphology as a function of the galaxies’ *physical*, rather than *observed* parameters. From the local relation, they derived a correction for each ( $M_r$ ,  $R_{50}$ ,  $z$ ) bin and then adjusted the vote fractions for the individual galaxies in each bin. The validity of this approach is justified in part since debiased vote fractions result in a consistent morphology–density relation over a range of redshifts (Bamford et al. 2009). We modify and extend this technique for the GZ2 classifications.

There are two major differences between the Galaxy Zoo and GZ2 data. First, GZ2 has a decision tree, rather than a single question and response for each vote. This means that all tasks, with the exception of the first, depend on responses to previous tasks in the decision tree. For example, the bar question is only asked if the user classifies a galaxy as having ‘features or disk’ and as ‘not edge-on’. Thus, the value of the vote fraction for this example only addresses the total bar vote fraction *among galaxies that a user has classified as disks and are not edge-on*, and not as a function of the total galaxy population (see Casteels et al. 2013 for further discussion).

For a galaxy to be used in deriving a bias correction for a particular task, this method requires both a minimum weighted vote fraction for the preceding response(s) and a minimum number of votes for the task in question. The value of the threshold is determined by finding the minimum vote fraction for the preceding response for which >99 per cent of galaxies with  $N_{\text{votes}} \geq N_{\text{crit}}$  are preserved. We compute thresholds for both  $N_{\text{crit}} = 10$  and  $N_{\text{crit}} = 20$  (Table 3). The effect is to remove galaxies with high vote fractions but low (and potentially unreliable) numbers of total votes.

Applying the thresholds to galaxies for deriving the bias correction does increase the number of bins with large variances; however, it is critical for reproducing accurate baseline measurements of individual morphologies. The correction derived from well-classified galaxies is then applied to the vote fractions for *all* galaxies in the sample.

The second major difference is that the adjustment of the Galaxy Zoo vote fractions assumed that the single task was essentially binary. Since almost every vote in Galaxy Zoo was for a response of either ‘elliptical’ or ‘spiral’ (either anticlockwise, clockwise or edge-on), this ratio was employed as the sole metric. No systematic debiasing was done for the other Galaxy Zoo response options (‘star/don’t know’ or ‘merger’), and the method of adjusting the vote fractions assumes that these other options do not significantly affect the classification bias for the most popular responses. This is not possible for GZ2: many tasks have more than two possible



**Figure 4.** Type fractions as a function of redshift for the classification tasks in GZ2. Solid (thin) lines show the vote fractions, while the thick (dashed) lines show the debiased vote fractions adjusted for classification bias. This is a luminosity-limited sample for  $M_r < -20.89$ . The data for each task is plotted only for galaxies with enough votes to characterize the response distribution (Table 3). Vertical dashed lines show the redshift at  $z = 0.01$  (the lower limit of the correction) and  $z = 0.085$  (the redshift at which the absolute magnitude limit reaches the sensitivity of the SDSS).

**Table 3.** Thresholds for determining well-sampled galaxies in GZ2. Thresholds depend on the number of votes for a classification task considered to be sufficient – this table contains thresholds applied to previous task(s) for both 10 and 20 votes. As an example, to select galaxies that may or may not contain bars, cuts for  $p_{\text{features/disk}} > 0.430$ ,  $p_{\text{notedgeon}} > 0.715$  and  $N_{\text{notedgeon}} \geq 20$  should be applied. No thresholds are given for Tasks 01 and 06, since these are answered for every classification in GZ2.

Task	Previous task	Vote fraction $N_{\text{task}} \geq 10$	Vote fraction $N_{\text{task}} \geq 20$
01	–	–	–
02	01	0.227	0.430
03	01,02	0.519	0.715
04	01,02	0.519	0.715
05	01,02	0.519	0.715
06	–	–	–
07	01	0.263	0.469
08	06	0.223	0.420
09	01,02	0.326	0.602
10	01,02,04	0.402	0.619
11	01,02,04	0.402	0.619

responses and represent a continuum of relative feature strength, rather than a binary choice.

The debiasing method relies on the assumption that for a galaxy of a given physical brightness and size, a sample of other galaxies

with similar brightnesses and sizes will (statistically) share the same average mix of morphologies. This is quantified using the ratio of vote fractions ( $f_i/f_j$ ) for some pair of responses  $i$  and  $j$ . We assume that the true (that is, unbiased) ratio of likelihoods for each task ( $p_i/p_j$ ) is related to the measured ratio via a single multiplicative constant  $K_{j,i}$ :

$$\frac{p_i}{p_j} = \frac{f_i}{f_j} \times K_{j,i}. \quad (5)$$

The unbiased likelihood for a single task can trivially be written as

$$p_i = \frac{1}{1/p_i}, \quad (6)$$

with the requirement that the sum of all likelihoods for a given task must be unity:

$$p_i + p_j + p_k + \dots = 1. \quad (7)$$

Multiplying (6) by the inverse of (7) yields:

$$p_i = \frac{1}{1/p_i} \times \frac{1}{p_i + p_j + p_k + \dots} \quad (8)$$

$$p_i = \frac{1}{p_i/p_i + p_j/p_i + p_k/p_i + \dots} \quad (9)$$

$$p_i = \frac{1}{1 + \sum_{j \neq i} (p_j/p_i)} \quad (10)$$

$$p_i = \frac{1}{1 + \sum_{j \neq i} K_{j,i}(f_j/f_i)}. \quad (11)$$

The corrections for each pair of tasks can be directly determined from the data. At the lowest redshift bin,  $\frac{p_i}{p_j} = \frac{f_i}{f_j}$  and  $K_{j,i} = 1$ . From equation (5):

$$\left(\frac{f_i}{f_j}\right)_{z=0} = \left(\frac{f_i}{f_j}\right)_{z=z'} \times K_{j,i} \quad (12)$$

$$K_{j,i} = \frac{(f_i/f_j)_{z=0}}{(f_i/f_j)_{z=z'}}. \quad (13)$$

This can be simplified by defining  $C_{j,i} \equiv \log_{10}(K_{j,i})$  and substituting into (13):

$$C_{j,i} = \log_{10}\left(\frac{f_i}{f_j}\right)_{z=0} - \log_{10}\left(\frac{f_i}{f_j}\right)_{z=z'}. \quad (14)$$

The correction  $C_{j,i}$  for any bin is thus the difference between  $f_i/f_j$  at the desired redshift and that of a local baseline, if the ratios between vote fractions are expressed as logarithms.

Local morphology baselines and subsequent corrections for GZ2 are derived from the main sample data. Since determining the baseline ratio relies on absolute magnitude and physical size, only galaxies in the main sample with spectroscopic redshifts (86 per cent) are used. Corrections also use data only from galaxies with sufficient numbers of responses to determine their morphology. We apply the

thresholds in Table 3 for  $N_{\text{task}} \geq 20$  to identify the well-answered galaxies for each task.

Bins for  $M_r$  range from  $-24$  to  $-16$  in steps of  $0.25$  mag, for  $R_{50}$  from  $0$  to  $15$  kpc in steps of  $0.5$  kpc, and for  $z$  from  $0.01$  to  $0.26$  in steps of  $0.01$ . These bin ranges and step sizes are chosen to maximize the parameter space covered by the bias correction. Only bins with at least  $20$  galaxies are used in deriving a correction.

Since each unique pair of responses to a question will have a different local baseline, there are  $\binom{n}{2}$  correction terms for a task with  $n$  responses. For  $n = 2$ , this method is identical to that described in Bamford et al. (2009).

The baseline morphology ratios for the GZ2 tasks are shown in Fig. 5 for the first two responses in each task. To derive a correction for bins not covered at low redshift, we attempted to fit each baseline ratio with an analytic, smoothly varying function. The baseline ratio for the responses to Tasks 01 and 07 is functionally very similar to the Galaxy Zoo relation (fig. A5 in Bamford et al. 2009). This ratio can be fit with an analytic function:

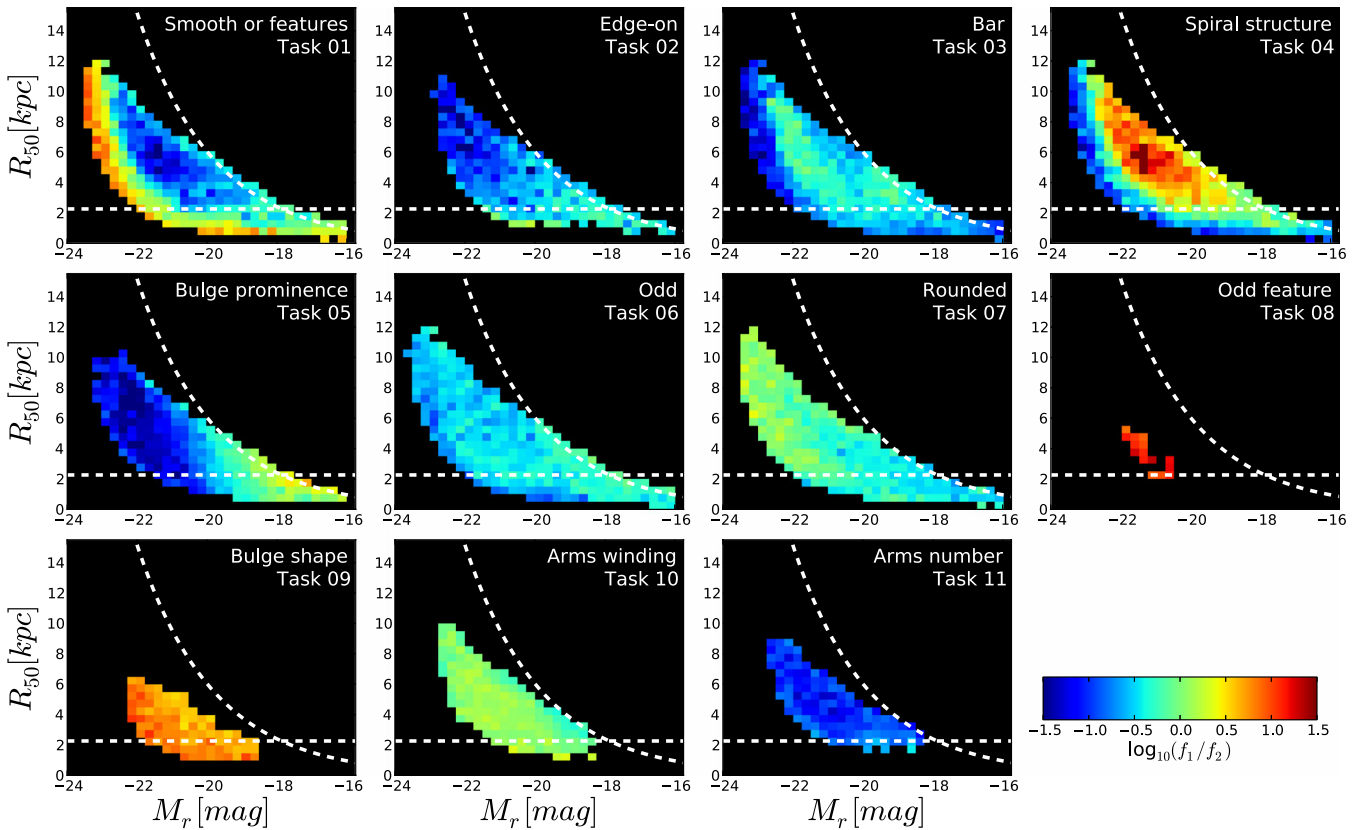
$$\frac{f_j}{f_i}[R_{50}, M_r] = \frac{s_6}{1 + \exp[(\alpha - M_r)/\beta]} + s_7, \quad (15)$$

where

$$\alpha = s_2 \times \exp[-(s_1 + s_8 R_{50}^{s_9})] + s_3, \quad (16)$$

$$\beta = s_4 + s_5(x_0 - s_3), \quad (17)$$

where  $\{s_1, s_2, s_3, s_4, s_5, s_6, s_7, s_8, s_9\}$  are minimized to fit the data.



**Figure 5.** Local morphology ratios for GZ2 classifications; these are used to derive the corrections that adjust data for classification bias (Section 3.3). The ratio of the binned vote fractions is for the first two responses in the decision tree (Table 2) for each task; there may be as many as 21 such pairs per task, depending on the number of unique responses. Dashed horizontal lines give the physical scale corresponding to 1 arcsec, while the curved lines show a constant apparent surface brightness of  $\mu_{50,r} = 23.0$  mag arcsec $^{-2}$ .



None of the other tasks are well fit by a function of the form in equation (15). For these, a simpler function is used where both  $M_r$  and  $R_{50}$  vary linearly

$$\frac{f_j}{f_i}[R_{50}, M_r] = t_1(R_{50} - t_2) + t_3(M_r - t_4) + t_5, \quad (18)$$

where  $\{t_1, t_2, t_3, t_4, t_5\}$  are the parameters to be minimized. equation (18) is fit to all other tasks where enough non-zero bins exist to get a good fit. Finally, for pairs of responses with only a few sampled bins, we instead directly measured the difference bin-by-bin between the local ratio and the measured ratio at higher redshift. Galaxies falling in bins that are not well sampled are assigned a correction of  $C_{i,j} = 0$  for that term; this is necessary to avoid overfitting based on only a few noisy bins.

This method succeeds for most GZ2 tasks and responses. Fig. 4 illustrates the comparison between the mean raw and debiased vote fractions as a function of redshift. The debiased results (*thick lines*) are flat over  $0.01 < z < 0.085$ , where  $L^*$  galaxies ( $M_r \sim -20.44$ ; Blanton et al. 2003) are within the detection limit of the survey and there are fewer empty bins. The debiased early- and late-type fractions of 0.45 and 0.55 agree with the Galaxy Zoo type fractions derived by Bamford et al. (2009) for the same selection criteria. The bar fraction in disk galaxies is approximately 0.35, slightly higher than the value found by using thresholded GZ2 data in Masters et al. (2011).

### 3.4 Angular separation bias

The vote fractions also suffer from a bias which depends on the angular separation between galaxies. For some classifications, participants perceive a galaxy's morphology differently when it has a close apparent companion. Casteels et al. (2013) found that this bias is particularly strong for Task 08 ('odd features') and its 'merger' classification. The mean merger vote fractions of both physically close galaxies with similar redshifts and projected pairs with very different redshifts increase strongly as a function of decreasing angular separation. This results in projected pairs of non-interacting galaxies being classified as mergers. To determine an unbiased estimate of the mean probability for a given classification, Casteels et al. (2013) subtracted the mean probabilities of projected pairs (with very different redshifts) from physically close pairs (with similar redshifts) for each projected separation bin. This results in a residual probability which is considered to represent the true change in morphology due to strong tidal interaction. While such a correction can be applied in a statistical way to the mean vote fractions for a given classification, applying such a correction to the individual vote fractions is not as straightforward.

The vote fractions presented in this data release have not been corrected for angular separation bias and readers using GZ2 data to study very close pairs are advised to keep this in mind, particularly for Task 08. Fortunately, the angular separation bias is minimal for the rest of the classifications and can usually be ignored. A detailed discussion of the angular separation bias (and how it affects individual classifications) is given in Casteels et al. (2013).

## 4 THE CATALOGUE

The data release for GZ2 includes the vote counts and fractions (raw, weighted and debiased) for each task in the classification tree for each galaxy. Data for the five sub-samples described below can be

accessed at <http://data.galaxyzoo.org>, and are available on CasJobs<sup>4</sup> in SDSS DR10 (Ahn et al. 2013). Abridged portions of each data table are included in this paper (Tables 5–9).

### 4.1 Main sample

Table 5 contains classification data for the 243 500 galaxies in the main sample with spectroscopic redshifts. Each galaxy is identified by its unique SDSS DR7 object ID, as well as its J2000.0 coordinates and GZ2 sub-sample (either original, extra or Stripe 82 normal-depth).  $N_{\text{class}}$  is the total number of volunteers who classified the galaxy, while  $N_{\text{votes}}$  gives the total number of votes summed over all classifications and all responses. For each of the 37 morphological classes, six parameters are given: the raw number of votes for that response (e.g. `t01_smooth_or_features_a01_smooth_count`), the number of votes weighted for consistency (`*_weight`), the fraction of votes for the task (`*_fraction`), the vote fraction weighted for consistency (`*_weighted_fraction`), the debiased likelihood (`*_debiased`), which is the weighted vote fraction adjusted for classification bias (see Section 3.3) and a Boolean flag (`*_flag`) that is set if the galaxy is included in a clean, debiased sample.

Flags for each morphological parameter are determined by applying three criteria. First, the vote fraction for the preceding task(s) must exceed some threshold (Table 3) to ensure that the question is well answered. For example, selecting galaxies from which a clean barred sample can be identified requires both  $p_{\text{features/disk}} \geq 0.430$  and  $p_{\text{notedge-on}} \geq 0.715$ . Secondly, the task must exceed a minimum number of votes (10 for Stripe 82, 20 for the main sample) in order to eliminate variance due to small-number statistics. Finally, the debiased vote fraction itself must exceed a given threshold of 0.8 for all tasks. We note this is a highly conservative selection – each of the above parameters may be adjusted to provide different clean thresholds, depending on the use case for the data.

Table 5 also includes an abbreviated version of the classification designated as `gz2.class`. It is intended to serve as a quick reference for the consensus GZ2 classification; any quantitative analyses, however, should use the vote fractions instead. A description of how the string is generated is given in Appendix A.

Table 6 gives the GZ2 classifications for the 42 462 main sample galaxies without spectroscopic redshifts. To compute the debiased likelihoods, we used the morphology corrections obtained for galaxies in the spectroscopic main sample. SDSS photometric redshifts (Csabai et al. 2003) are used to derive  $M_r$  and  $R_{50}$  for each galaxy in the photometric sample and select the appropriate correction bin. The mean error in the redshift of the photometric sample (from the SDSS photo- $z$ ) is  $\Delta z = 0.021$  (a fractional uncertainty of 27 per cent), compared to the spectroscopic accuracy of  $\Delta z = 0.00016$  (0.3 per cent). Since the size of the redshift bins in  $C_{j,i}$  is 0.01, a shift of several bins can potentially produce a very large change in the debiased vote fractions.

Since the redshift can have a strong effect on classification bias, galaxies with spectroscopic and photometric redshifts from the SDSS are separated; we do not recommend that their debiased data be combined for analysis. For science cases, where the main driver is the number of galaxies, however, it may be possible to combine the raw vote fractions for the two samples.

<sup>4</sup> <http://skyserver.sdss3.org/casjobs/>

## 4.2 Stripe 82

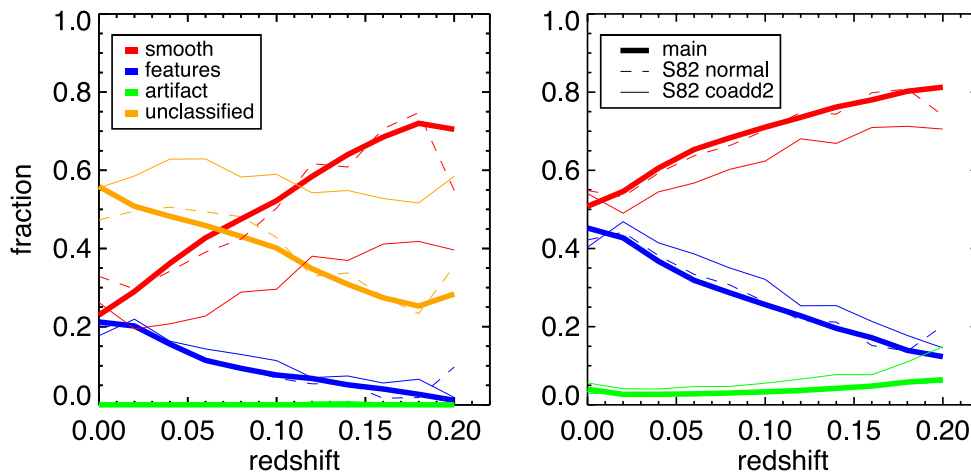
Data for Stripe 82 is reduced separately from the GZ2 main sample. This is due to the deeper magnitude limit of the samples (both normal and co-added) as well as the improved seeing in the latter. Since different image qualities potentially affect the debiasing, all three Stripe 82 samples are individually adjusted for classification bias. The method is the same as that used for the spectroscopic main sample galaxies – the only difference is that the threshold for classification in the co-added sample is lowered from 20 to 10 votes.

Table 7 gives classifications for the Stripe 82 normal-depth images with spectroscopic redshifts. Galaxies in this table with  $m_r < 17.0$  also appear in Table 5; however, the corrections for classification bias here are derived based only on Stripe 82 data, and so debiased likelihoods and flags are slightly different. Classifications for galaxies with photometric redshifts only are not included.

Tables 8 and 9 contain classifications for the first and second sets of co-added Stripe 82 galaxies with spectroscopic redshifts. Since both the number of galaxies and the average number of classifications per galaxy are a small fraction of that in the main sample, though, the corrections encompass a smaller range of tasks and phase space in  $(M_r, R_{50}, z)$ . The increased exposure time and improved seeing, however, means that the effect of classification bias is lessened at lower redshifts; the raw vote fractions may thus be more suitable for some science cases that require deeper imaging.

Fig. 6 compares the results of the Task 01 classifications for the GZ2 main and Stripe 82 samples. The distributions of the responses for both the main sample and Stripe 82 normal-depth show similar behaviour as a function of redshift. This applies both when using thresholded vote fractions and the raw likelihoods. The type fractions for the co-added data, however, are significantly different – there is a significant increase at all redshifts in the fraction of responses for ‘features or disk’. This increases the fraction of unclassified galaxies (and subsequently decreases the fraction of smooth galaxies) when using thresholds, and a similar shift of vote fractions from smooth to feature/disk when using the raw likelihoods.

This difference demonstrates why the main sample corrections cannot be applied to the co-added images. The likely cause is that the co-added data allows classifiers to better distinguish faint features and/or disks, due to both improved seeing (from 1.4 to 1.1 arcsec; Annis et al. 2011) and higher signal-to-noise ratio.



**Figure 6.** GZ2 vote fractions for Task 01 (smooth, features/disk, or star/artifact?) as a function of spectroscopic redshift. Left: fraction of galaxies for which the GZ2 vote fraction exceeded 0.8. Galaxies with no responses above 0.8 are labelled as ‘unclassified’. Right: mean GZ2 vote fractions weighted by the total number of responses per galaxy. Data are shown for the GZ2 original + extra (thick solid), Stripe 82 normal-depth (thin dotted) and Stripe 82 co-add depth (thin solid) samples with a magnitude limit of  $m_r < 17.0$ .

Classifications for the two sets of co-added Stripe 82 images show no systematic differences for the majority of the GZ2 tasks. Fig. 7 shows the difference between the two vote fractions ( $\Delta_{\text{coadd}} = p_{\text{coadd1}} - p_{\text{coadd2}}$ ) for four examples. A non-zero mean value of  $\Delta_{\text{coadd}}$  would indicate a systematic bias in classification, possibly due to the differences in image processing. In GZ2, 33/37 tasks have  $|\Delta_{\text{coadd}}| < 0.05$  for galaxies with at least 10 responses to the task.

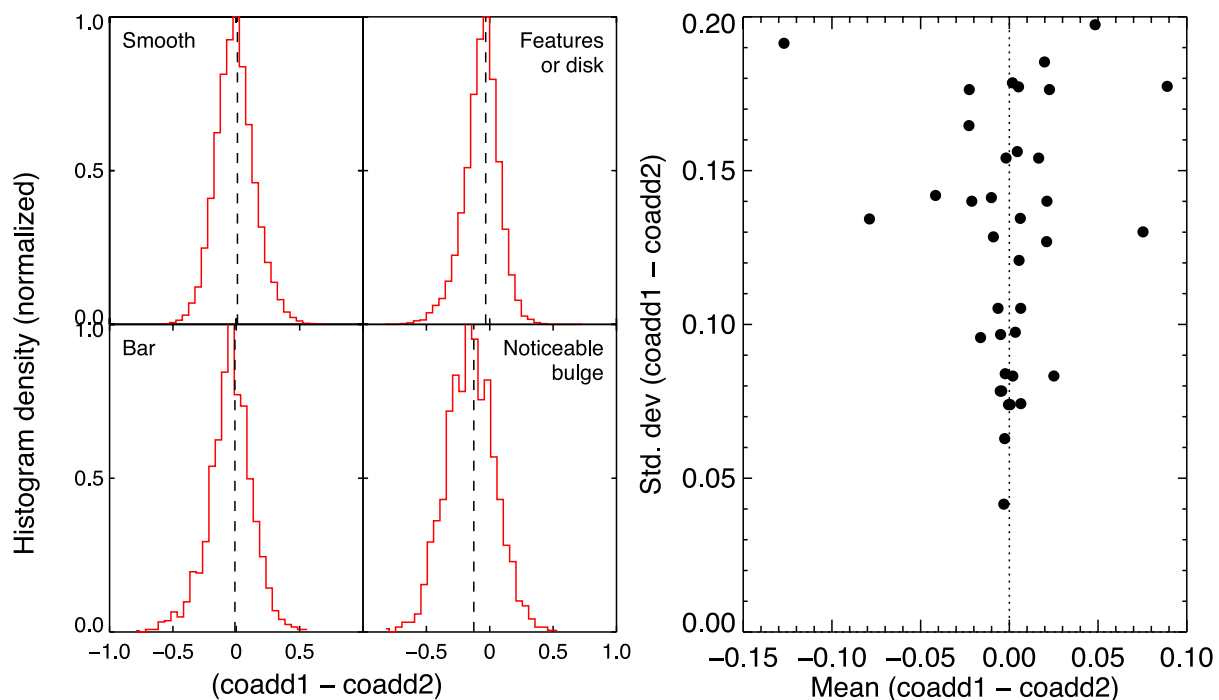
The biggest systematic difference is for the response to Task 05 (bulge prominence) of the bulge being ‘just noticeable’. The mean fraction in co-add2 is 35 per cent higher than that in co-add1. This effect is opposite (but not equal) to that for an ‘obvious’ bulge, for which co-add1 is 13 per cent higher; this may indicate a general shift in votes towards a more prominent bulge. A similar but smaller effect is seen in classification of bulge shapes for edge-on disks (Task 09), where votes for ‘no bulge’ in co-add1 data go to ‘rounded bulge’ in co-add2. The specific cause for these effects as it relates to the image quality is not investigated further in this paper.

For most morphological questions, the two versions of co-added images showed no significant difference. While either set of co-added data can likely be used for science, we recommend using co-add2 if choosing between them. The overall consistency indicates that the votes for both could potentially be combined and treated as a single data set; this could be useful for increasing the classification accuracy for deeper responses (such as spiral arm properties) within the GZ2 tree.

## 4.3 Using the classifications

Since GZ2 is intended to be a public catalogue for use by the community, we present two examples of how classifications can be selected. Actual use will depend on the individual science case, and additional cuts (e.g. making a mass or volume-limited sample) may be required to define the parameters more appropriately.

The first use case suggested for the GZ2 data is the selection of pure samples matching a specific morphology category. This is appropriate for when some finite number of objects with clear morphological classifications is required (perhaps for individual study or an observing proposal), but there is no requirement to have a complete sample. An example would be the selection of three-armed spirals.



**Figure 7.** Comparison of GZ2 classifications for the co-added images of Stripe 82. Left: Distribution of the difference in vote fractions ( $\Delta_{\text{coadd}}$ ) for galaxies that appear in both the co-add1 and co-add2 samples. Four example tasks are shown, including only galaxies with at least 10 responses per task. The dashed line shows the median of each distribution. The response ‘noticeable bulge’ for Task 05 was the only example for which the mean  $|\Delta_{\text{coadd}}| > 0.1$ . Right: mean values  $\Delta_{\text{coadd}}$  for every response in the GZ2 tree.

The simplest way is to search for galaxies in the GZ2 spectroscopic main sample (Table 5) with `t11_arms_number_a33_3_flag = 1`, which returns 308 galaxies. Inspection of the flagged images shows that they are all in fact disk galaxies with three spiral arms, with no object that is a clear false positive.

Alternatively, those making use of the catalogue can set their own thresholds for the debiased likelihoods to change the strength of the selection criteria. This flag is currently set via the combination of  $p_{\text{features/disk}} > 0.430$ ,  $p_{\text{edge-on,no}} > 0.715$ ,  $p_{\text{spiral,yes}} > 0.619$ ,  $N_{\text{spiral,yes}} > 20$  and  $p_{\text{3arms}} > 0.8$  (Table 3). These cuts are generally regarded as conservative, and more genuine three-armed spirals might be discovered by, for example, lowering the threshold on  $p_{\text{3arms}}$ . If the number of objects returned by such a query is of a manageable size, we suggest that images be individually examined – this is the only way to differentiate spirals with true radial symmetry from two-armed spirals with an additional tidal tail, for example. GZ2 papers that employ similar methods of selecting specific morphologies include Masters et al. (2011), Kaviraj et al. (2012), Simmons et al. (2013) and Casteels et al. (2013).

The second common use case for the morphologies is the direct use of the likelihoods. While thresholds on the likelihoods are appropriate for some studies, many classifications do not exceed  $p > 0.8$  for any available response, especially when more than two responses are available. These intermediate classifications are a combination of genuine physical attributes of the galaxy (vote fractions of  $p_{\text{smooth}} = 0.5$ ,  $p_{\text{features/disk}} = 0.5$  may accurately characterize a galaxy with both strong bulge and disk components) in addition to limitations in accuracy from the image quality and variance among individual classifiers. The problem is that thresholding only samples a small portion of the vote distributions.

In order to use data for the *entire* sample, the debiased likelihoods for each response can be treated as probabilistic weights. As an

example, consider the type fractions from Task 01 shown in Fig. 6. The left-hand side shows the average fraction of morphological classes at each redshift only defining a ‘class’ as exceeding some vote fraction threshold; as a result, more than half the galaxies are left ‘unclassified’, with no strong majority. The panel on the right in Fig. 6 uses the likelihoods directly. A galaxy with  $p_{\text{smooth}} = 0.6$ ,  $p_{\text{features/disk}} = 0.3$  and  $p_{\text{star/artifact}} = 0.1$  contributes 0.6 of a ‘vote’ to smooth, 0.3 to features/disk, and 0.1 to star/artifact. This approach is generally suitable for studying morphology dependence on global variables, such as environment or colour. Furthermore, examples of using the likelihoods as weights can be found in Bamford et al. (2009), Skibba et al. (2012) and Casteels et al. (2013).

## 5 COMPARISON OF GZ2 TO OTHER CLASSIFICATION METHODS

To assess both the scope and potential accuracy of the GZ2 classifications, we have compared our results to four morphological galaxy catalogues (including the previous version of Galaxy Zoo). All four catalogues contain classifications based on optical SDSS images and have significant overlaps with the galaxies in GZ2.

- (i) Galaxy Zoo (Lintott et al. 2011): citizen science.
- (ii) Nair & Abraham (2010): expert visual classification.
- (iii) FIGI (Baillard et al. 2011): expert visual classification.
- (iv) Huertas-Company et al. (2011): automatic classification.

A summary of the agreement between GZ2 and other catalogues is given in Table 4; the remainder of this section discusses the results in more detail.

**Table 4.** Comparison of the agreement in morphology between the GZ2 main sample and other catalogues. For each category, a galaxy is considered to ‘agree’ if it has a likelihood of at least 0.8 (‘clean’) in GZ2 and at least 0.5 (‘majority’) in the other catalogue (or for NA10, inclusion in the relevant category). This table gives both the total number of overlapping galaxies and the fraction that agreed in the corresponding catalogue when matched to GZ2.

GZ2	Galaxy Zoo		HC11		NA10		EFIGI	
	<i>N</i>	(per cent)	<i>N</i>	(per cent)	<i>N</i>	(per cent)	<i>N</i>	(per cent)
Early-type	79 214	86.2	26 732	82.1	1995	96.7	214	84.6
Late-type	26 314	97.9	79 277	88.6	5481	94.9	1675	98.2
Bar	–	–	–	–	651	94.9	238	98.7
Ring	–	–	–	–	438	91.6	110	83.6
Merger	526	63.3	–	–	43	100.	6	100.

**Table 5.** Morphological classifications of GZ2 main sample galaxies with spectra.

Stripe82 objID	RA	Dec.	<i>gz2_class</i>	<i>N</i> <sub>class</sub>	<i>N</i> <sub>votes</sub>	Count	<u>t01_smooth_or_features_a01_smooth_</u>				Flag
							wt_count	Fraction	wt_fraction	Debiased	
588017703996096547	10:43:57.70	+11:42:13.6	SBC?t	44	349	1	0.1	0.023	0.002	0.002	0
587738569780428805	12:49:38.60	+15:09:51.1	Ser	45	185	5	5.0	0.111	0.115	0.115	0
587735695913320507	14:03:12.53	+54:20:56.2	Sb+t	46	372	0	0.0	0.000	0.000	0.000	0
587742775634624545	12:21:12.82	+18:22:57.7	SBb(r)	45	289	8	8.0	0.178	0.178	0.178	0
587732769983889439	12:29:28.03	+08:44:59.7	Ser	49	210	12	12.0	0.245	0.249	0.454	0
588017725475782665	12:34:05.41	+07:41:35.8	Ec	42	149	27	27.0	0.643	0.686	0.771	0
588017702391578633	11:40:58.75	+11:28:16.1	Sc+t	45	356	0	0.0	0.000	0.000	0.000	0
588297864730181658	11:46:07.80	+47:29:41.1	Sen	45	206	4	4.0	0.089	0.091	0.091	0
588017704545812500	12:43:56.58	+13:07:36.0	Sb?t	43	360	0	0.0	0.000	0.000	0.000	0
588017566564155399	12:25:46.72	+12:39:42.7	Sc?t(u)	43	244	6	6.0	0.140	0.143	0.143	0

*Note.* The full, machine-readable version of this table is available at <http://data.galaxyzoo.org>. A portion is shown here for guidance on form and content, which is described in Section 4 and Appendix A (for *gz2\_class*). The full table contains 252 750 rows (one for every galaxy in the sample), and 226 columns, with six variables for each of the 37 GZ2 morphology classifications.

**Table 6.** Morphological classifications of GZ2 main sample galaxies with photo-*z*.

Stripe82 objID	RA	Dec.	<i>gz2_class</i>	<i>N</i> <sub>class</sub>	<i>N</i> <sub>votes</sub>	Count	<u>t01_smooth_or_features_a01_smooth_</u>				Flag
							wt_count	Fraction	wt_fraction	Debiased	
587722981736579107	11:27:57.82	−01:12:50.4	Ec	43	181	27	27.0	0.628	0.648	0.648	0
587722981741691055	12:14:60.00	−01:08:39.8	Er	44	133	40	40.0	0.909	0.909	0.909	1
587722981745819655	12:52:22.07	−01:11:58.4	Sc(o)	46	221	17	17.0	0.370	0.378	0.378	0
587722981746082020	12:55:09.43	−01:05:29.6	Sc(o)	44	172	31	31.0	0.705	0.771	0.363	0
587722981746344092	12:57:22.12	−01:03:28.7	SBb2m	43	358	0	0.0	0.000	0.000	0.000	0
587722981747982511	13:12:25.88	−01:06:13.1	Ei(o)	45	156	37	37.0	0.822	0.850	0.547	0
587722981748375814	13:16:06.59	−01:12:39.7	Er	52	198	44	44.0	0.846	0.846	0.626	0
587722981748768914	13:19:22.53	−01:07:45.9	Sb(r)	46	350	3	3.0	0.065	0.065	0.097	0
587722981748768984	13:19:34.20	−01:05:20.0	Ei	42	140	37	36.2	0.881	0.900	0.678	0
587722981749031027	13:21:46.41	−01:09:37.8	Ei	50	158	46	45.8	0.920	0.932	0.682	0

*Note.* The full, machine-readable version of this table is available at <http://data.galaxyzoo.org>. A portion is shown here for guidance on form and content, which are identical to those in Table 5.

## 5.1 Galaxy Zoo and GZ2

The galaxies in GZ2 are a sub-set of Galaxy Zoo, with 248 883 in both catalogues. The similarities between Galaxy Zoo and Task 01 in GZ2 allow their results to be compared in detail. We analysed vote fractions for the Galaxy Zoo ‘elliptical’ category as compared to GZ2 ‘smooth’ galaxies, and combined responses for all three Galaxy Zoo spiral categories to the GZ2 ‘features or disk’ response.

The matched Galaxy Zoo-GZ2 catalogue contains 33 833 galaxies identified as ellipticals based on their debiased Galaxy Zoo likelihoods (Lintott et al. 2011). Using the GZ2 debiased likelihoods, 50.4 per cent of galaxies have vote fractions exceeding 0.8 in both samples, while 97.6 per cent have vote fractions exceeding 0.5. There are only ~1200 ellipticals identified in Galaxy Zoo

that have  $p_{\text{features/disk}} > 0.5$  in GZ2. Of these, roughly 40 per cent are barred galaxies, and almost all show obvious bulges, the likely cause of their identification as early-type in Galaxy Zoo.

The GZ2 main sample contains 83 956 galaxies identified as spirals by Galaxy Zoo. The agreement with the ‘features or disk’ response in GZ2 is significantly lower than that of ellipticals. Only 31.6 per cent of the Galaxy Zoo clean spirals had vote fractions greater than in GZ2, with 59.2 per cent having a vote fraction greater than 0.5. The GZ2 debiased likelihoods for the same galaxies agree at 38.1 per cent (for 0.8) and 78.2 per cent (for 0.5). Of the ~1600 spirals in Galaxy Zoo with  $p_{\text{features/disk}} < 0.4$ , visual inspection shows these to be almost entirely inclined disks or lenticular galaxies without spiral arms. These galaxies are slightly bluer than the other early-types in Galaxy Zoo; however, we emphasize

**Table 7.** GZ2 morphological classifications of normal-depth images of Stripe 82 galaxies.

Stripe82 objID	RA	Dec.	gz2_class	N <sub>class</sub>	N <sub>votes</sub>	Count	t01_smooth_or_features_a01_smooth_				flag
							wt_count	Fraction	wt_fraction	Debiased	
587730845812064684	20:37:42.95	-01:10:10.7	Ei	46	135	38	38.0	0.826	0.851	0.842	1
587730845812065247	20:37:35.59	-01:05:15.4	Ei	49	230	26	26.0	0.531	0.551	0.551	0
587730845812196092	20:38:42.14	-01:13:05.5	Sb2m	48	368	2	2.0	0.042	0.042	0.042	0
587730845812196825	20:39:10.35	-01:10:49.5	Ei	42	177	26	26.0	0.619	0.633	0.633	0
587730845812524122	20:42:07.88	-01:07:06.4	Er	51	149	48	48.0	0.941	0.961	0.961	1
587730845812654984	20:42:57.20	-01:05:11.9	Ei	49	201	33	33.0	0.673	0.673	0.638	0
587730845812655541	20:43:15.93	-01:09:24.6	Ei(i)	46	193	25	25.0	0.543	0.543	0.543	0
587730845812720365	20:43:25.63	-01:05:13.8	Ei	43	152	34	33.8	0.791	0.790	0.721	0
587730845812720699	20:43:46.54	-01:12:32.1	Ei	46	233	24	22.5	0.522	0.506	0.506	0
587730845812851385	20:44:45.87	-01:04:58.8	Er	45	147	39	39.0	0.867	0.884	0.837	1

*Note.* The full, machine-readable version of this table is available at <http://data.galaxyzoo.org>. A portion is shown here for guidance on form and content, which are identical to those in Table 5. Classifications here are for normal-depth images from Stripe 82, which goes to a deeper magnitude limit ( $m_r > 17.7$ ) galaxies in the main sample.

**Table 8.** GZ2 morphological classifications of co-added images (set 1) of Stripe 82 galaxies.

Stripe82 objID	RA	Dec.	gz2_class	N <sub>class</sub>	N <sub>votes</sub>	Count	t01_smooth_or_features_a01_smooth_				Flag
							wt_count	Fraction	wt_fraction	Debiased	
8647474690312307154	20:37:16.90	-01:08:54.1	Ei(m)	20	74	15	14.4	0.750	0.742	0.749	0
8647474690312307877	20:37:35.59	-01:05:15.4	Ei	17	54	13	13.0	0.765	0.765	0.765	0
8647474690312308880	20:37:27.68	-01:12:39.9	Ei	12	32	10	10.0	0.833	0.833	0.833	1
8647474690312373464	20:37:52.27	-01:08:17.8	Er	22	75	18	18.0	0.818	0.829	0.829	1
8647474690312438284	20:38:42.14	-01:13:05.5	Sc2m	23	149	3	3.0	0.130	0.136	0.136	0
8647474690312505086	20:39:10.33	-01:10:49.5	Ec	15	58	11	11.0	0.733	0.748	0.748	0
8647474690312832559	20:42:07.88	-01:07:06.3	Er	20	77	14	14.0	0.700	0.700	0.781	0
8647474690312898532	20:42:57.20	-01:05:11.8	Ei	14	68	9	9.0	0.643	0.643	0.643	0
8647474690312962734	20:43:25.63	-01:05:13.8	Ei	21	77	15	15.0	0.714	0.714	0.679	0
8647474690312963665	20:43:15.93	-01:09:24.7	Ei	12	43	11	11.0	0.917	0.917	0.917	1

*Note.* The full, machine-readable version of this table is available at <http://data.galaxyzoo.org>. A portion is shown here for guidance on form and content, which are identical to those in Table 5. Classifications here are for the co-added images (set 1; see Section 2.2) from Stripe 82, which goes to a deeper magnitude limit and has a better angular resolution than galaxies in the main sample. There is no colour desaturation for background sky pixels in this set of images.

**Table 9.** GZ2 morphological classifications of co-added images (set 2) of Stripe 82 galaxies.

Stripe82 objID	RA	Dec.	gz2_class	N <sub>class</sub>	N <sub>votes</sub>	Count	t01_smooth_or_features_a01_smooth_				Flag
							wt_count	Fraction	wt_fraction	Debiased	
8647474690312307154	20:37:16.90	-01:08:54.1	Ei(o)	16	72	10	10.0	0.625	0.625	0.629	0
8647474690312307877	20:37:35.59	-01:05:15.4	Ei	21	84	17	17.0	0.810	0.810	0.810	1
8647474690312308318	20:37:42.94	-01:10:10.7	Ei(m)	23	88	18	18.0	0.783	0.783	0.722	0
8647474690312308880	20:37:27.68	-01:12:39.9	Er	16	48	16	16.0	1.000	1.000	1.000	1
8647474690312373464	20:37:52.27	-01:08:17.8	Er	23	89	17	17.0	0.739	0.739	0.739	0
8647474690312438284	20:38:42.14	-01:13:05.5	Sb2m	11	91	0	0.0	0.000	0.000	0.000	0
8647474690312505086	20:39:10.33	-01:10:49.5	Sb?m	12	65	4	3.4	0.333	0.295	0.295	0
8647474690312832559	20:42:07.88	-01:07:06.3	Er	23	75	14	14.0	0.609	0.629	0.666	0
8647474690312898532	20:42:57.20	-01:05:11.8	Ei	26	129	12	12.0	0.462	0.462	0.492	0
8647474690312962734	20:43:25.63	-01:05:13.8	Ei	20	69	18	17.0	0.900	0.895	0.840	1

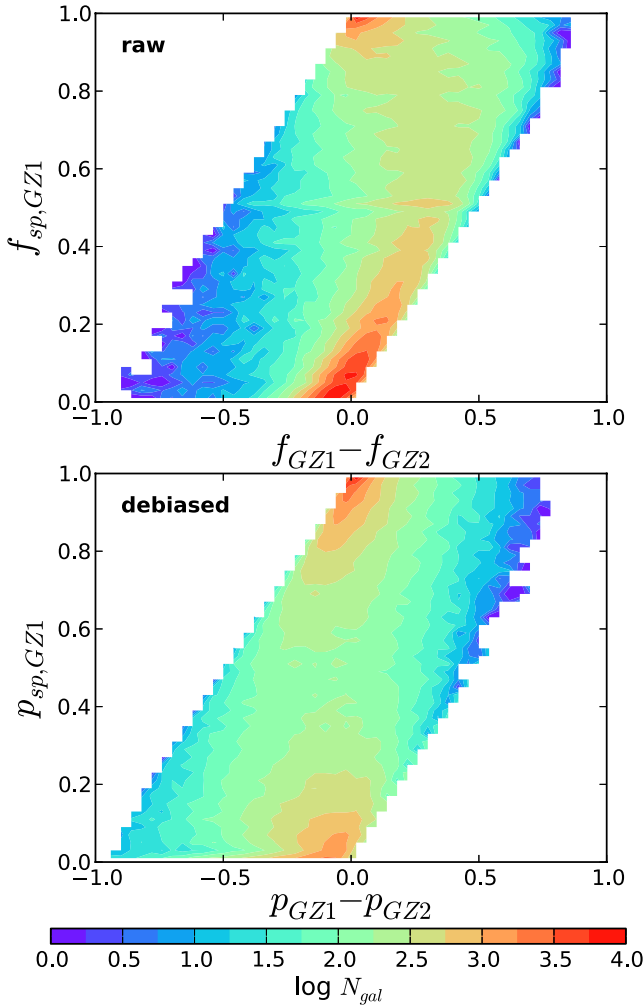
*Note.* The full, machine-readable version of this table is available at <http://data.galaxyzoo.org>. A portion is shown here for guidance on form and content, which are identical to those in Table 5. Classifications here are for the co-added images (set 2; see Section 2.2) from Stripe 82, which goes to a deeper magnitude limit and has a better angular resolution than galaxies in the main sample. Pixels in the sky background are colour desaturated in this set of images.

that most elliptical galaxies with this colour (Schawinski et al. 2009) were correctly classified in the initial Galaxy Zoo project.

Fig. 8 shows the difference between the vote fractions for the spiral classifications in Galaxy Zoo and features/disk classifications in GZ2 for all galaxies that appear in both catalogues. The vote fractions show a tight correlation at both very low and very high values of the Galaxy Zoo vote fraction for combined spiral ( $f_{sp}$ ), indicating that both projects agree on the strongest spirals (and corresponding ellipticals). At intermediate (0.2–0.8) values of  $f_{sp}$ , however, the

Galaxy Zoo vote fractions are consistently higher than those in GZ2, differing by up to 0.25. When using debiased likelihoods in place of the vote fractions, this effect decreases dramatically; however, the tightness of the correlation correspondingly drops at low and high  $p_{sp}$ .

Galaxies are slightly more likely to be identified as a spiral in GZ2 than in Galaxy Zoo. Fig. 9 shows the distribution of the difference between spiral classifications, using the debiased likelihoods for combined spirals for Galaxy Zoo and ‘features or disk’ galaxies in

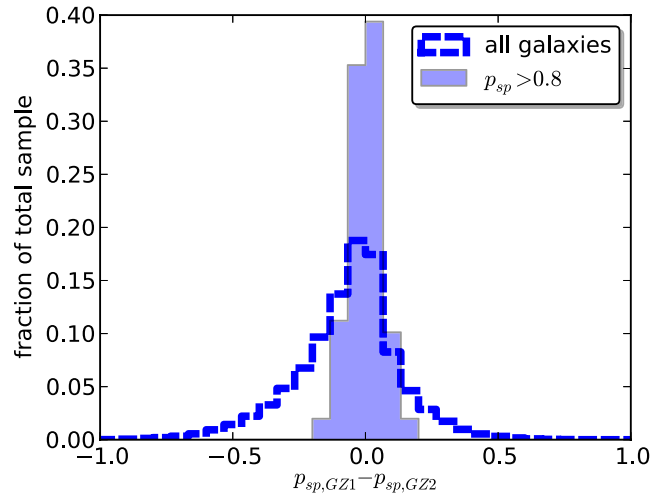


**Figure 8.** Comparison of spiral galaxies using classifications for ‘combined spiral’ (Galaxy Zoo) and ‘features or disk’ (GZ2). Top: raw vote fractions. At intermediate values ( $f_{sp} \sim 0.5$ ), Galaxy Zoo classifiers are more likely to identify galaxies as spiral compared to GZ2. Bottom: debiased vote fractions. At intermediate values, Galaxy Zoo and GZ2 classifications are consistent with each other; however, there is an increased scatter in the vote fractions near  $p_{sp} \simeq 0$  and  $p_{sp} \simeq 1$ .

GZ2. The slight leftward skew indicates that a galaxy is more likely to be identified as a spiral in GZ2 compared to Galaxy Zoo. When restricted only to galaxies in the joint clean samples ( $p > 0.8$ ), the spread is greatly reduced and the distribution is centred around a difference of zero, indicating that the two agree very well for classifications with high levels of confidence.

Based on classifications from galaxies in both projects, GZ2 is more conservative than Galaxy Zoo at identifying spiral structure. A possible explanation is that this is a bias from classifiers who are anticipating subsequent questions about the details of any visible structures. An experienced classifier, for example, would know that selecting ‘features or disk’ is followed by additional questions, none of which offer options for an uncertain classification. If the classifier is less confident in identifying a feature, it is possible they would avoid this by clicking ‘smooth’ instead.

The Galaxy Zoo interface had one option to classify merging galaxies. This was a rare response, comprising less than 1 per cent of the total type fraction at all redshifts in Galaxy Zoo (Bamford et al. 2009). Darg et al. (2010) found that a vote fraction of  $f_{mg} > 0.6$



**Figure 9.** Comparison of the spiral feature vote fractions for objects in Galaxy Zoo (Galaxy Zoo) and GZ2 (GZ2). The dashed line shows the difference between  $p_{\text{combinedspiral}}$  for Galaxy Zoo and  $p_{\text{features or disk}}$  for GZ2 for the 240, 140 galaxies in both samples. The filled histogram shows the same metric for the 57 994 galaxies classified as ‘clean’ spirals in both Galaxy Zoo and GZ2.

robustly identified merging systems in Galaxy Zoo. Of the 1632 such systems classified in GZ2, more than 99 per cent were identified as ‘odd’ galaxies and 77.7 per cent had  $p_{mg} > 0.5$  in GZ2. This is partly due to early-stage merging spirals avoiding the ‘merger’ classification, with only late-stage mergers with extremely disturbed morphologies recording high vote fractions for the merger question.

In addition to the angular separation bias discussed in Section 3.4, GZ2 responses to Task 08 (‘odd feature’) also suffer from cross-talk. This is the result of more than one response being applicable for some galaxies, which forces the participant to choose the one they consider most relevant. For example, a merging galaxy may display a strong dust lane, be highly irregular in shape, *and* have a disturbed appearance. While ‘merger’, ‘dust lane’, ‘irregular’ and ‘disturbed’ are all possible classifications, the participant will usually choose the ‘merger’ classification and information about the other morphological features is lost. For close pairs, this cross-talk is a function of angular separation – the fraction of galaxies classified as mergers increases with decreasing separation, while the other ‘odd feature’ classifications lose votes correspondingly (Casteels et al. 2013). We note that in later incarnations of Galaxy Zoo<sup>5</sup> it is possible to select multiple classifications from the ‘odd feature’ task.

To summarize, Galaxy Zoo and GZ2 share nearly 250 000 galaxies that have been classified in both samples. The separation of early and late-type galaxies from the two projects is mostly consistent, especially for high-confidence ( $p > 0.8$ ) galaxies. GZ2 classifications are more conservative than Galaxy Zoo at identifying spiral structure for intermediate vote fractions. Mergers identified in Galaxy Zoo appear at a very high rate in GZ2 as ‘odd’ galaxies, although classification as a merger is complicated by cross-talk between other GZ2 responses to Task 08.

## 5.2 Expert visual classifications

The standard for detailed morphological classifications for many years has come from visual identifications by individual expert

<sup>5</sup> www.galaxyzoo.org

astronomers. We compare the GZ2 classifications to two SDSS morphological catalogues generated by small groups of professional astronomers: Nair & Abraham (2010, hereafter NA10) and EFIGI (Baillard et al. 2011). The fact that GZ2 and both expert catalogues used data from the same survey allows for direct comparison of the results.

The catalogue of NA10 is based on images of 14 034 galaxies from SDSS DR4. Galaxies were selected from a redshift range of  $0.01 < z < 0.1$ , with an extinction-corrected apparent magnitude limit of  $g < 16$ . In comparison, the GZ2 sample is deeper, spans a larger redshift range and contains a more recent data release. 12 480 galaxies were classified in both GZ2 and NA10 – this comprises nearly all (89.9 per cent) of the NA10 catalogue, but only 4.5 per cent of GZ2.

NA10 is based on visual classifications of monochrome  $g$ -band images by a single astronomer (P. Nair). The data include RC3 T-types (a numerical index of a galaxy’s stage along the Hubble sequence; de Vaucouleurs et al. 1991) as well as measurements of bars, rings, lenses, pairs, interactions and tails. The NA10 data does not contain information on the likelihood or uncertainty associated with morphological features, although it does measure some features by their relative strengths (dividing barred galaxies into strong, medium and weak classes, for example).

EFIGI consists of classifications of 4 458 galaxies, which are a sub-set of the RC3 catalogue with five-colour imaging in SDSS DR4. Almost all galaxies in EFIGI are at  $0.0001 < z < 0.08$ . Classifications on composite  $gri$  images were performed by a group of 11 professional astronomers, each of whom classified a sub-set of 445 galaxies. A training set of 100 galaxies was also completed by all 11 astronomers to adjust for biases among individual classifiers. 3411 galaxies are in both EFIGI and GZ2. This constitutes 77 per cent of EFIGI and 1.2 per cent of the GZ2 sample.

T-types in EFIGI were assigned using a slightly modified version of the RC3 Hubble classifications. Peculiar galaxies were not considered a separate type, and ellipticals were sub-divided into various types: compact, elongated (standard elliptical), cD (giant elliptical) and dwarf spheroidals. The remaining morphological information, dubbed ‘attributes’, is divided between six groups:

- (i) appearance: inclination/elongation,
- (ii) environment: multiplicity and contamination,
- (iii) bulge: B/T ratio,
- (iv) spiral arms: arm strength, arm curvature and rotation,
- (v) texture: visible dust, dust dispersion, flocculence and hotspots,
- (vi) dynamics: bar length, inner ring, outer ring, pseudo-ring and perturbation.

EFIGI attributes were measured on a five-step scale from 0 to 1 (0, 0.25, 0.50, 0.75, 1). For some attributes (e.g. arm strength, rings), the scale is set by the fraction of the flux contribution of the feature relative to that of the entire galaxy. For others (e.g. inclination or multiplicity), it ranges between the extrema of possible values.

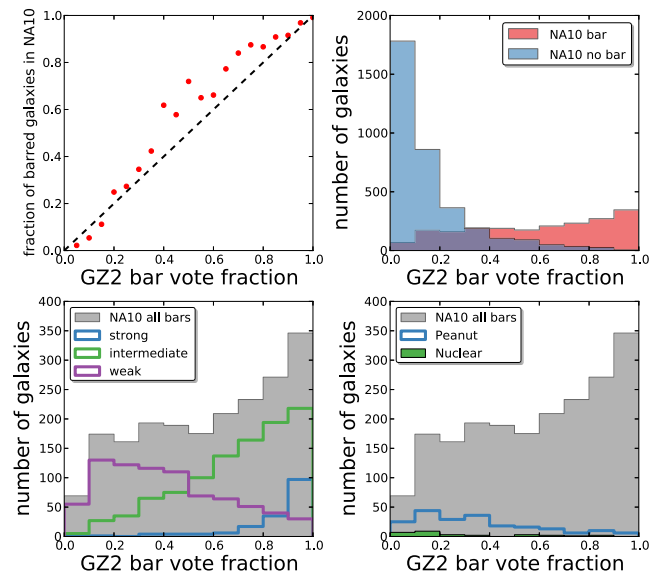
The EFIGI and NA10 catalogues were compared in detail by Baillard et al. (2011). T-type classifications for the two catalogues strongly agree; EFIGI lenticular and early spirals have slightly later average classifications in NA10, while later EFIGI galaxies have slightly earlier NA10 T-types. EFIGI has a major fraction of galaxies with slight-to-moderate perturbations with no interaction flags set in the NA10 catalogue, indicating that NA10 is less sensitive towards more benign features (e.g. spiral arm asymmetry). The bar length scale is consistent between the two samples; good agreement is also found for ring classifications.

### 5.2.1 Bars

To analyse the overlap between bars detected in expert classifications and GZ2, we restrict comparisons to galaxies identified as possessing disks and being ‘not edge-on’. For the rest of this paper, we refer to such ‘not edge-on’ disks as *oblique* disks (since many of them have inclination angles high enough that ‘face-on’ is not an accurate description). Oblique galaxies are selected from the GZ2 data as having  $p_{\text{features/disk}} > 0.430$ ,  $p_{\text{notedgeon}} \geq 0.715$  and  $N_{\text{notedgeon}} \geq 20$  (Table 3). This restricts overlap of GZ2 oblique galaxies in NA10 to 5526 objects. The ‘not edge-on’ cut is similar to a restriction on inclination angle of  $\lesssim 70^\circ$ , based on the average axial ratio from the SDSS exponential profile fits.

NA10 detected 2537 barred galaxies, 18 per cent of their total. For objects with T-types later than E/S0, this rises to 25 per cent of the sample. This is consistent with the bar fraction from Masters et al. (2011) for oblique disk galaxies (29 per cent). Of the objects NA10 identify as barred galaxies, 2348 (93 per cent) are objects in GZ2. Masters et al. (2011) analysed bar classifications in NA10 and the RC3 and the GZ2 bar classifications (albeit before the classification bias was applied). They found good agreement, particularly finding that values of  $f_{\text{bar}} > 0.5$  identified almost all strongly barred NA10 and RC3 galaxies, and that  $f_{\text{bar}} < 0.2$  correlated strongly with galaxies identified as unbarred by NA10 and RC3.

Bars in NA10 are classified according to either bar strength (weak, intermediate, strong) or by other morphological features (ansae, peanuts or nuclear bar). A galaxy may in rare cases have both a disk-scale (strong, intermediate or weak) and a nuclear bar. Fig. 10 (top left) shows that the GZ2 average vote fraction for bars closely agrees with the NA10 fraction of barred galaxies for each GZ2 bin. The two quantities are not identical; the  $x$ -axis plots *individual classifications* of galaxies with varying vote fractions for the presence of a bar. The  $y$ -axis shows the ratio of barred to unbarred galaxies in NA10. The



**Figure 10.** Classifications for galactic bars in GZ2 and NA10. Data are for the 5526 galaxies in both samples classified by GZ2 as not-edge-on disks and with  $\geq 20$  bar classifications. Top left: mean bar vote fraction per galaxy in GZ2 versus the ratio of barred to all galaxies in NA10. Dashed line shows the one-to-one relationship. Top right: distribution of the GZ2 debiased bar vote fraction, separated by NA10 classifications. Bottom left: distribution of GZ2 bar vote fraction for the three disk-scale bar categories of NA10. Bottom right: distribution of GZ2 bar vote fraction for peanut and nuclear bars from NA10.

data have a correlation coefficient of  $\rho = 0.984$ , and lie slightly above a linear relationship for  $p_{\text{bar}} > 0.4$ . For bar identification, the aggregate votes of volunteers closely reproduce overall trends in expert classification.

The top-right panel of Fig. 10 shows the distribution of GZ2 bar votes by simply splitting the NA10 sample in two: galaxies without a bar and galaxies with a bar (of any kind). Both samples show a strong trend towards extrema, with the peak near zero for non-barred galaxies indicating that GZ2 classifiers are very consistent at identifying unbarred disk galaxies. Possession of a bar is less straightforward; while the frequency of NA10 bars does increase with GZ2 fraction, 39 per cent of barred galaxies from NA10 have a GZ2  $p_{\text{bar}} < 0.5$ . Conversely, only 6 per cent of non-barred NA10 galaxies have GZ2 bar vote fractions above 0.5.

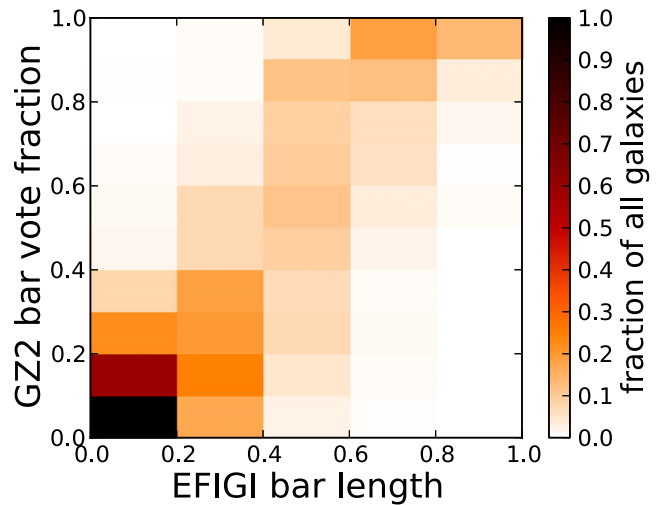
For galaxies where our identification of a bar ( $p_{\text{bar}} \geq 0.5$ ) disagrees with NA10, inspection shows that almost all are in fact true bars, with some overlap from galaxies with outer rings. Galaxies with GZ2 vote fractions between 0.3 and 0.5 show more of a mix, with some likely bars and some spurious identifications from GZ2. Interestingly, there is also no difference in the average colour, size or apparent magnitude for galaxies in which the NA10 and GZ2 classifications disagree when compared to those in which they do agree.

The bottom-left panel of Fig. 10 shows the distribution of GZ2 vote fraction split by bar strength from NA10. The distribution for all bars is the same as shown in the top right, increasing with GZ2 vote fraction. There is a clear difference in the GZ2 classifications as a function of NA10 bar strength; all three are statistically highly distinct from each other and from the overall barred sample, according to a two-sided K-S test. The majority of both the strong and intermediate barred population have high GZ2 vote fractions, with 78 per cent of strong bars and 40 per cent of intermediate bars at  $p_{\text{bar}} > 0.8$ . This increases to 94 and 80 per cent, respectively, if the majority criterion of 0.5 (Masters et al. 2011) for the GZ2 vote fraction is used instead. Only 9 per cent of weakly barred galaxies have GZ2 vote fractions above 0.8, and 32 per cent have vote fractions above 0.5.

The lack of sensitivity to weak bars from NA10 may also be related to the design of the GZ2 interface. When asked if a bar is present, the image shown in the web interface is an icon with two examples of a barred galaxy (Fig. 1). The example image has the bar extending across the disk's full diameter, fitting the typical definition of a strong bar. With this as the only example (and no continuum of options between the two choices), GZ2 participants may not have looked for bars shorter than the disk diameter, or have been less confident in voting for 'yes' if they were identified. Results from Hoyle et al. (2011) show that classifiers are fully capable of identifying weak bars in other contexts.

Ansa, peanuts and nuclear bars as identified by NA10 do not correlate strongly with the GZ2 bar parameter. In fact, the median bar vote fraction for peanuts and nuclear bars (no ansae appear in the oblique sample) is only  $p_{\text{bar}} = 0.29$ . Nuclear bars are the only feature that overlaps with the NA10 bar strength classifications; out of 283 nuclear bars, 3 galaxies also have strong bars, 44 have intermediate bars and 166 have weak bars.

The EFIGI bar length attribute is measured with respect to  $D_{25}$ , the decimal logarithm of the mean isophote diameter at a surface brightness of  $\mu_B = 25 \text{ mag arcsec}^{-2}$ . A value of 1.0 (the strongest bar) extends more than half the length of  $D_{25}$ , while the median value of 0.5 would be about one-third the length of  $D_{25}$ . The overall fraction of barred galaxies in EFIGI is 42 per cent (1439/3354); this is essentially unchanged if only oblique galaxies are considered



**Figure 11.** EFIGI bar length classifications compared to their GZ2 vote fractions for the presence of a bar. Data are for the 2232 oblique disk galaxies in both EFIGI and GZ2 with at least 10 bar classifications.

(915/2099 = 44 per cent). This is significantly higher than the mean bar fraction of Masters et al. (2011), at 29.5 per cent, but consistent with results using automated ellipse-fitting techniques (Barazza, Jogee & Marinova 2008; Aguerri, Méndez-Abreu & Corsini 2009).

The higher fraction in EFIGI is due to the contributions of galaxies with bar length attributes of 0.25, the majority of which have GZ2 vote fractions below 0.5. If only EFIGI galaxies at 0.5 and above are considered to be barred, then the bar fraction falls to 17 per cent. Only some of the galaxies in the 0.25 EFIGI bin are being classified by GZ2 as barred, however, Baillard et al. (2011) defines these as 'barely visible' bars.

There is a strong correlation between the GZ2 bar vote fractions and the attribute strength from EFIGI (Fig. 11). 65 per cent of galaxies in both EFIGI and GZ2 sample have no strong evidence for a bar ( $p_{\text{bar}} < 0.3$ ); of those, 77 per cent had EFIGI bar attributes of zero and 94 per cent had 0.25 or less. For galaxies where GZ2  $p_{\text{bar}} > 0.8$ , the EFIGI attribute lies almost entirely at either 0.75 or 1.0. The correlation coefficient between the EFIGI and GZ2 bar measurements is  $\rho = 0.75$ .

Using the criteria for oblique galaxies from Table 3, there are 1543 galaxies with an EFIGI bar classification. Barred galaxies as identified by GZ2 ( $p_{\text{bar}} \geq 0.3$ ) agree very well with EFIGI; less than 5 per cent of GZ2 barred galaxies have EFIGI attributes of 0, with a mean value of 0.56. This could indicate a selection preference towards medium-length bars (one-third to one-half of  $D_{25}$ ), or could genuinely reflect the fact that medium bars are the most common length in disk galaxies.

Data from both NA10 and EFIGI can be used to quantify a threshold to identify barred galaxies in GZ2 data. The fraction of non-barred oblique galaxies as identified by both expert catalogues drops to less than 5 per cent at a GZ2 vote fraction  $p_{\text{bar}} = 0.3$ . This threshold may be changed depending on the specific science needs, but offers a useful trade-off between inclusion of nearly all (97 per cent from NA10) strong and intermediate bars and most (75 per cent) of the weak bars. This is a slightly more inclusive threshold than the  $f \geq 0.5$  used by Masters et al. (2011). We also note that the strong correlation between  $p_{\text{bar}}$  and EFIGI bar strength suggests that  $p_{\text{bar}}$  may be used directly (with caution) as a measure of bar strength in GZ2 galaxies.



## 5.2.2 Rings

NA10 classify three types of ringed galaxies based on criteria from Buta & Combes (1996): inner rings (between the bulge and disk), outer rings (external to the spiral arms) and nuclear rings (lying in the bulge region). In GZ2, rings can be identified only if the user selects ‘yes’ for the question ‘Anything odd?’ Since the ‘odd feature’ task has seven responses, of which only one can be selected, any galaxies with multiple ‘odd’ features will have votes split among the features, with only one option achieving a plurality (see Section 5.1). While this means that some galaxies with rings may have low vote fractions in the GZ2 classifications, those with high vote fractions are typically strong and distinct.

In the NA10 catalogue, 18.2 per cent of all galaxies (30 per cent of disks) have a ring. Of those, 10 per cent are nuclear rings, 74 per cent are inner rings and 32 per cent are outer rings (the sum is more than 100 per cent since one-third of ringed galaxies have multiple rings flagged). NA10 and GZ2 ring classifications are compared for the oblique galaxies in both samples. No cut is applied to the vote fraction for the ‘anything odd’ question; even a comparatively low cut of  $p_{\text{odd}} > 0.2$  eliminates roughly 40 per cent of the ringed galaxies identified in NA10.

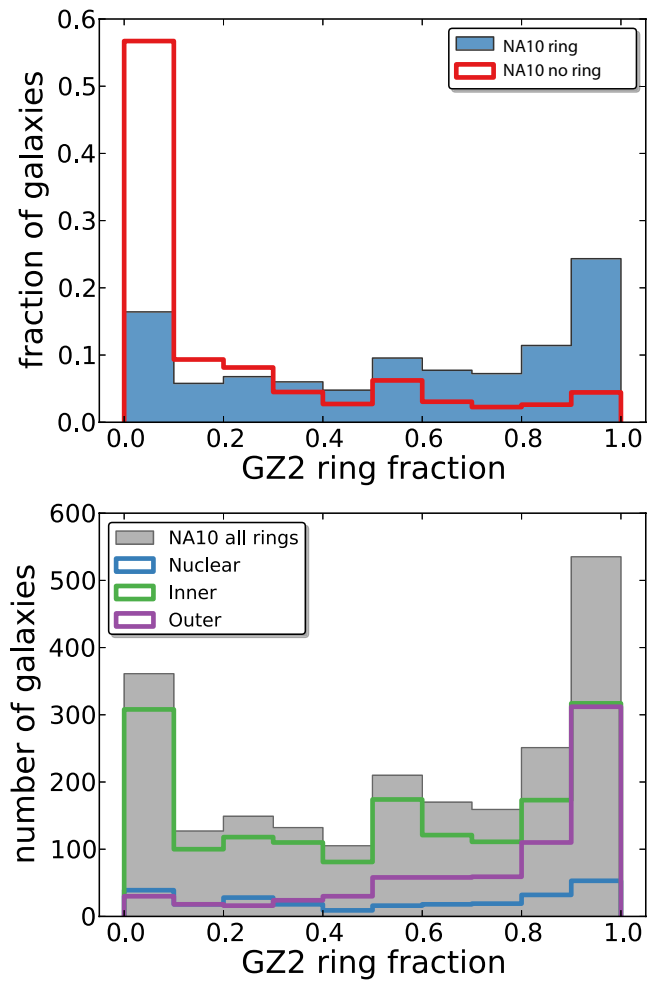
Fig. 12 shows the distribution of the GZ2 ring vote fraction ( $p_{\text{ring}}$ ) in the oblique sample, split by the identification of a ring in NA10. While there is a marked increase in the fraction of ringed galaxies at  $p_{\text{ring}} > 0.5$ , more than a third of these galaxies are identified by NA10 as ringless. The agreement is significantly better if a limit is placed on the number of votes. Setting  $N_{\text{ring}} > 5$ , for example, increases the agreement to  $\sim 75$  per cent.

The distribution of  $p_{\text{ring}}$  is strongly affected by the ring type. Among galaxies that NA10 identifies as rings for which GZ2 strongly disagrees ( $p_{\text{ring}} < 0.5$ ), the majority are classified as inner rings. There are 308 ringed galaxies from NA10 that have no ring votes at all in GZ2; 84 per cent of these are inner rings. For galaxies on which the NA10 and GZ2 ring classifications agree, the percentage of outer ringed galaxies is much higher. In the absence of specific instructions on different types of ring (the icon in Fig. 1 does not indicate the size of the disk relative to the ring), GZ2 classifiers are much more likely to identify outer rings. The flat distribution of  $p_{\text{ring}}$  for nuclear rings indicates that there is also no strong correlation between GZ2 classifications and ring structures in the bulge.

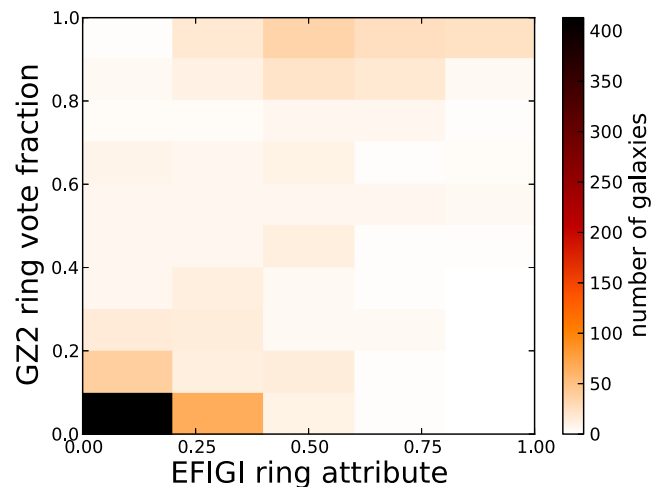
Most galaxies with  $p_{\text{ring}} > 0.5$  are classified as outer rings in NA10, especially if constraints on  $N_{\text{odd}}$  and/or  $p_{\text{odd}}$  are added. Part of the reason for the remaining disagreements may relate to the placement of the ring classification in GZ2 at the end of the tree, and only as a result of the user identifying something ‘odd’. Without having seen examples of ringed galaxies (especially as their structures connect to spiral arms), users may have been less likely to characterize the galaxy as odd and thus will not address the ring question.

In EFIGI, rings are classified as inner, outer and pseudo-types. Both outer and pseudo-ringed galaxies show reasonably strong correlations with GZ2 ring classifications, with a mean ring vote fraction of 0.69 for outer ringed galaxies and 0.71 for pseudo-ringed galaxies. The mean GZ2 ring vote fraction for inner rings is only 0.41. For galaxies in both EFIGI and GZ2, a high GZ2 ring vote fraction agrees significantly with the expert classification of a ring. 89 per cent of galaxies with  $p_{\text{ring}} > 0.5$  and having at least 10 votes for ‘Anything odd?’ were classified as rings in EFIGI.

Fig. 13 shows a moderate correlation between the EFIGI ring attributes and the GZ2 ring vote fractions. The relationship is



**Figure 12.** Ring classifications in GZ2 and NA10. Data are for the 7245 oblique galaxies in both samples. Top: GZ2 vote fraction for rings ( $N_{\text{ring}}/N_{\text{odd}}$ ) for all galaxies, split by their NA10 ring identifications. Bottom: GZ2 ring vote fraction for all rings identified by NA10, separated by ring type.



**Figure 13.** EFIGI ring classifications compared to their GZ2 ring vote fractions. The EFIGI data is the strongest attribute among the combined inner, outer and pseudo-ring categories. Data are for the 1080 galaxies in both EFIGI and GZ2 with at least 10 responses to Task 08 (odd feature).

dominated by galaxies for which the methods agree strongly on either no ring or a ring with high contributions to the total galaxy flux. For intermediate (between 0.25 and 0.75) values of the EFIGI ring attribute, the GZ2 vote fraction has relatively little predictive power.

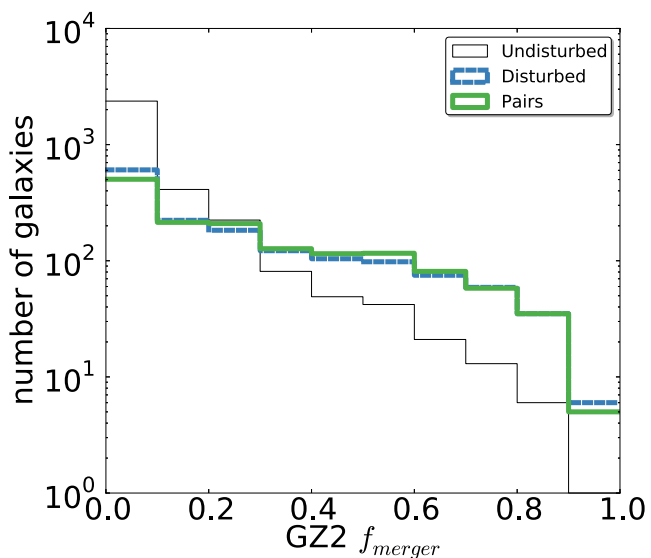
### 5.2.3 Mergers and interacting galaxies

Galaxies in GZ2 are classified as mergers in Task 08 ‘anything odd?’ NA10 classify possible mergers in two ways: both as pairs of objects and as galaxies with visible interaction signatures. The paired objects are sorted by relative separation (close, projected, apparent or overlapping pairs), and interacting galaxies by morphology (disturbed, warp, shells, tails or bridges).

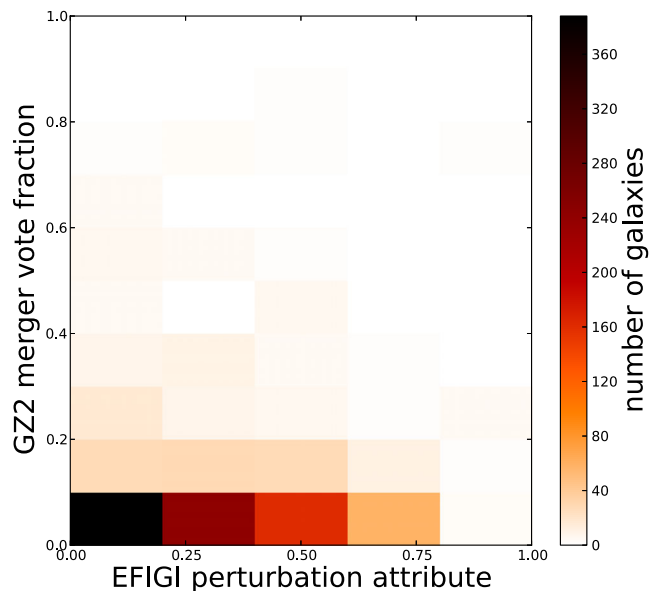
In NA10, 22.3 per cent of galaxies are paired with another object; of these, 72 per cent are close pairs. Interacting galaxies are a much smaller sub-set, comprising only 7 per cent of the NA10 sample. In GZ2, only 252 galaxies have  $p_{\text{odd}} > 0.8$  and  $p_{\text{merger}} > 0.8$ . 3 per cent of the NA10 paired galaxies have at least 10 GZ2 votes for a merger.

Fig. 14 shows the distributions of NA10 paired and interacting galaxies with at least 10 votes for ‘yes’ (something odd) for Task 06. Most galaxies have no votes for a merger, with only 6 per cent of galaxies having  $N_{\text{merger}} \geq 5$ . The numbers of both paired and interacting galaxies identified by NA10 begin to exceed the non-interacting population at a merger fraction above  $p_{\text{merger}} > 0.25$ . There is a significant population of non-interacting galaxies up to very high GZ2 vote fractions, however, which means that a simple cutoff is insufficient to produce a pure merger population by this criterion.

We visually examined galaxies that have high GZ2 merger fractions ( $p_{\text{merger}} > 0.5$ ) but are classified by NA10 as non-interacting. The majority of these galaxies show obvious nearby companions, many of which appear to be tidally stripped or otherwise deformed. Some of these galaxies are likely the result of projection effects and are not truly interacting pairs – however, a significant fraction may be true interactions not identified in NA10. The contrary case



**Figure 14.** Merger classifications in GZ2 and NA10. Data are for the 3878 galaxies in both samples with  $p_{\text{odd}} > 0.223$ , showing the distribution of the vote fraction for the ‘merger’ response to Task 08 in GZ2. The majority of galaxies have  $p_{\text{merger}} < 0.1$ . Galaxies classified by NA10 both as disturbed and in pairs dominate at  $p_{\text{merger}} > 0.5$ , but there remains a significant population of undisturbed galaxies even at the highest GZ2 vote fractions.



**Figure 15.** EFIGI perturbation classifications compared to GZ2 merger vote fractions. Data are for the 1080 galaxies in both EFIGI and GZ2 with at least 10 responses to Task 08 (odd feature).

(galaxies identified as interacting by NA10, but  $p_{\text{merger}} < 0.1$  in GZ2), generally show faint extended features – mostly shells and tidal tails – that are clear signs of interacting. Most of these galaxies have no apparent companion visible in the image, however.

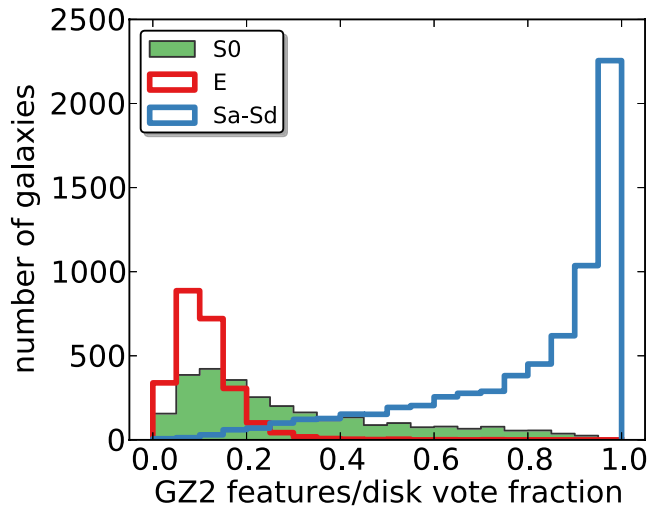
EFIGI has no dedicated category for mergers; galaxies are classified on whether they have any close companions (‘contamination’) or distortions in the galaxy profile (‘perturbation’), which may or may not be merger related. Galaxies cleanly classified by GZ2 as mergers are only weakly correlated with both attributes; the mean EFIGI value in GZ2 mergers is 0.31 for the perturbation attribute and 0.48 for contamination. Fig. 15 shows only a very weak correlation ( $\rho = 0.14$ ) between EFIGI perturbation and GZ2 merger vote fraction. Highly perturbed galaxies with low GZ2  $p_{\text{merger}}$  are mostly dwarf peculiar and irregular galaxies with no sign of tidal features or an interacting companion.

Results from both expert catalogues are consistent with Casteels et al. (2013), who found that the mean vote fraction for mergers increases with decreasing projected separations ( $r_p$ ), but then drops off significantly for the closest pairs at  $r_p < 10$  kpc. At these separations, the GZ2 votes for Task 08 go instead to the ‘irregular’ and ‘disturbed’ responses.

### 5.2.4 T-types

One of the primary challenges for morphological classification in GZ2 is matching the classification tree to T-types, which are not a category in the decision tree. The classifications from expert catalogues are thus extremely valuable as a calibration sample.

Fig. 16 shows the percentage of galaxies identified as having either a disk or features from the first question in the GZ2 tree, colour-coded by their NA10 T-types. There is a clear separation in the GZ2 fractions for galaxies classified as E versus Sa–Sd. Disk galaxies, including S0, have a median fraction for the GZ2 ‘features or disk’ question of 0.80, with a standard deviation of 0.29. Disks with few GZ2 votes for ‘feature’ are found to be primarily lenticular (S0) galaxies. If only galaxies with T-types Sa or later are considered, the peak at lower GZ2 vote fractions disappears. The



**Figure 16.** T-type classifications for NA10 and GZ2. Data are for the 12 480 galaxies found in both samples. The distribution of GZ2 vote fractions is separated by their T-type classification from NA10. Both elliptical and late-type spirals are strongly correlated with their GZ2 vote fraction. S0 galaxies are more commonly classified as ellipticals, but have a significant tail of high GZ2 features/disk vote fractions.

median GZ2 vote fraction for these galaxies is 0.88, with a standard deviation of 0.23. The highest GZ2 vote fraction for an elliptical galaxy in NA10 is 0.741; therefore, any cut above this includes galaxies *exclusively* identified by NA10 as late-type.

Since few objects are identified as stars or artifacts in GZ2 Task 01, the vote fraction for smooth galaxies is approximately  $p_{\text{smooth}} = (1 - p_{\text{features/disk}})$ . Elliptical galaxies have a median vote fraction for the GZ2 ‘smooth’ question of  $0.86 \pm 0.07$ . The GZ2 votes for the NA10 ellipticals are more sharply peaked than NA10 late-types, lacking the long tail seen even for the very late types. A cut on GZ2 votes for smooth galaxies at 0.8, for example, includes only 4 per cent late-type galaxies (20 per cent if S0 galaxies are defined as ‘late-type’).

For galaxies identified as oblique disks, GZ2 users vote if the galaxy has visible spiral structure (Task 04). For the few NA10 elliptical galaxies that have votes for this question, 85 per cent have GZ2 vote fractions of zero, with the remainder weakly clustered around  $p_{\text{spiral}} \sim 0.3$ . For NA10 late-type galaxies, the majority of disk/feature objects have high GZ2 spiral structure vote fractions. For galaxies with at least 10 votes on Task 04, 70 per cent of Sa or later types have  $p_{\text{spiral}} > 0.8$  from GZ2. This drops to 60 per cent if S0 galaxies are included as late-type. The missing population is thus made up of galaxies that NA10 classify as having significant spiral structure, but for which GZ2 does not distinguish the arms. One might expect these galaxies to have lower magnitudes or surface brightnesses compared to the rest of the sample, thus lowering the confidence of GZ2 votes (there is no analogue parameter associated with NA10 classifications). However, the apparent  $g$  and  $r$  magnitudes, as well as the absolute  $g$ -band magnitude, show no difference between galaxies above and below the 80 per cent cutoff. Changing the value for the GZ2 vote fraction does not affect the results, so it appears that lower GZ2 vote fractions for spirals indicate intrinsically weaker (or less clearly defined) spiral arms.

For disk galaxies with spiral structure, Task 10 in GZ2 asked users to classify the ‘tightness’ of the arms. This had three options: tight, medium or loose, accompanied with icons illustrating example pitch angles (Fig. 1). This allows investigation of the parameters which

contribute to the Hubble classification of late-type galaxies which depends on both spiral arm and bulge morphology; tight spirals are presumed to be Sa/Sb, medium spirals Sb/Sc and loose spirals Sc/Sd.

The left-hand side of Fig. 17 shows the distribution of NA10 T-types for galaxies based on their GZ2 vote fractions for winding arms. Vote fractions for both tight and medium winding arms are relatively normally distributed, with the mean  $p_{\text{tight}} = 0.46$  and  $p_{\text{medium}} = 0.37$ . Strongly classified loose spirals are much rarer, with 75 per cent of galaxies having  $p_{\text{loose}} < 0.2$ . Almost no elliptical galaxies from the NA10 catalogue are included in the oblique disk sample, although there are significant numbers of S0 galaxies.

For tight spirals, the category of galaxies with the highest vote fractions has more earlier-type spirals than galaxies with a low vote for tight spiral winding arms. For a tight spiral vote fraction above 0.9, 85 per cent of galaxies are Sb or earlier. Medium-wound spirals with high vote fractions tend to be Sb and Sc – the proportion of both types increases as a function of  $p_{\text{medium}}$ , and constitute 84 per cent of galaxies when  $p_{\text{medium}} > 0.6$ . Galaxies classified as strongly medium-wound are rare, however, with only 23 galaxies having  $p_{\text{medium}} > 0.8$ . Loose spirals are dominated by Sc and Sd galaxies at high vote fractions, comprising more than 50 per cent of galaxies with  $p_{\text{loose}} > 0.7$ . Casteels et al. (2013) found that galaxies with high  $p_{\text{loose}}$  often show tidal features and host a significant proportion of interacting galaxies. This distribution may reflect the experimental design of GZ2, with volunteers preferring extreme ends of a distribution rather than an indistinct ‘central’ option.

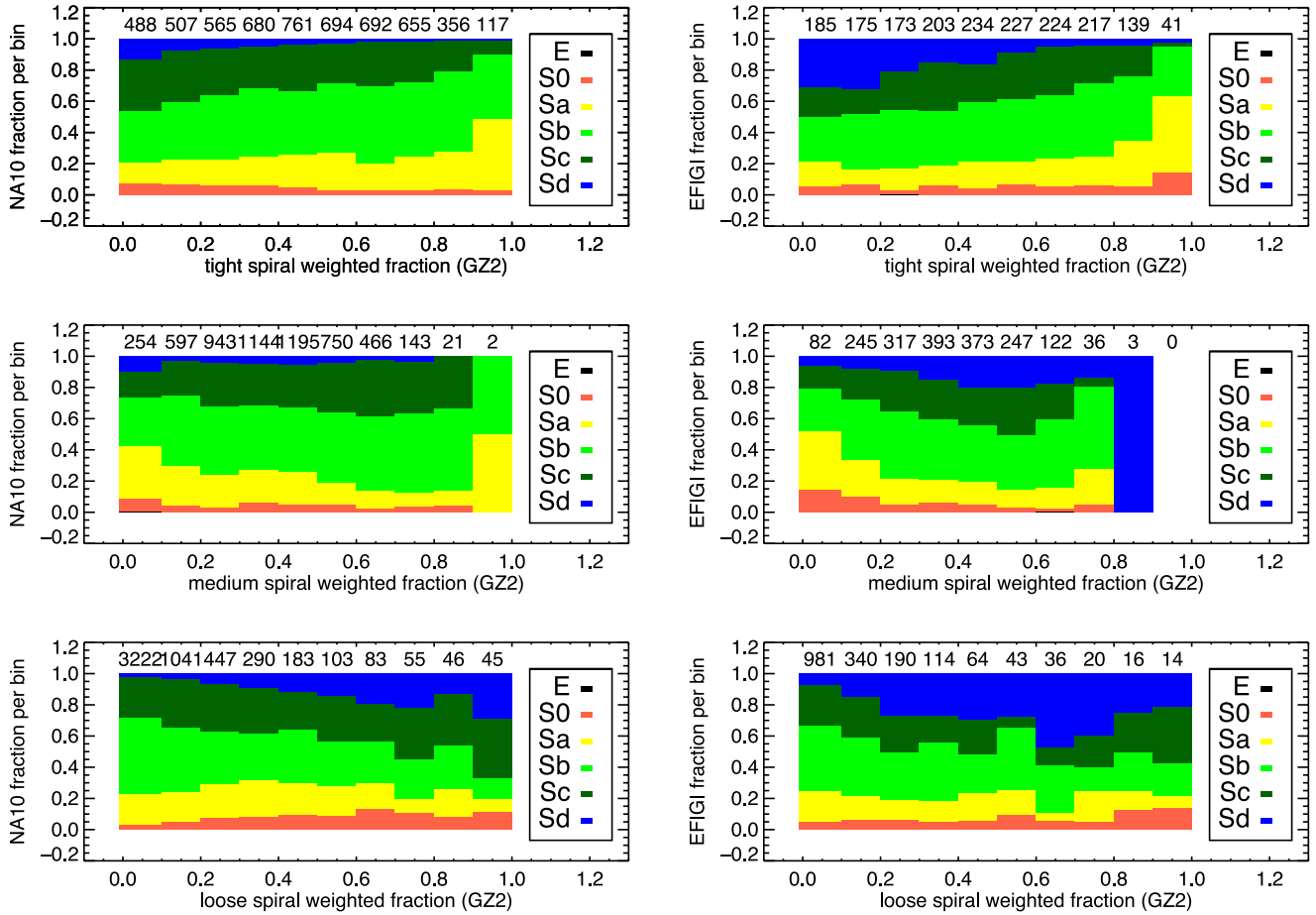
There are less than 30 galaxies classified by GZ2 as smooth and as Sa or later type by NA10. Individual inspection reveals that these galaxies show no evidence of a disk, and so their NA10 classification is purely bulge related. There also exist  $\sim 700$  galaxies classified by GZ2 as smooth but as S0 or S0/a by NA10; these are mostly smooth, face-on galaxies with prominent bulges.

EFIGI T-types (Fig. 17) show similar trends with respect to GZ2 spiral arm classifications. Late-type spirals (Sc–Sd) constitute about half of disk galaxies with  $p_{\text{loose}} > 0.5$ , with early-type spirals (Sa–Sb) occupying a similar distribution at  $p_{\text{tight}} > 0.5$ . S0 galaxies show nearly a flat distribution of GZ2 spiral tightness vote fractions; this is unsurprising, since by definition there is no pitch angle without the presence of spiral arms.

Overall, a clear trend is demonstrated for looser GZ2 spiral arms to correspond with later spiral T-types from expert classifications. High vote fractions are mostly Sa/Sb galaxies for tight winding, Sb/Sc galaxies for medium winding, and Sc/Sd galaxies for loose winding. Individual galaxies, however, can show significant scatter in their GZ2 vote fractions and do not always separate the morphologies on the level of the Hubble T-types. Classifications of spiral galaxies into sub-categories (Sa, Sb and Sc) by experts have been shown to be dominated by bulge classification, and to pay little attention to the arm pitch angle, despite the original definition of the late-type categories.

Having considered the effect of spiral arm tightness, we examine the relationship between bulge morphology and T-type. Disk galaxies in GZ2 are also classified by the visible level of bulge dominance (Task 05), irrespective of whether spiral structure is also identified. This task has four options: ‘no bulge’, ‘just noticeable’, ‘obvious’ and ‘dominant’ (Fig. 1).

The left-hand side of Fig. 18 shows the distribution of NA10 T-types for galaxies based on their GZ2 vote fractions for bulge prominence, including only galaxies with at least 10 votes for Task 05. Vote fractions for both the ‘no bulge’ and ‘dominant’ responses peak strongly near zero and tail off as the vote fraction increases. The



**Figure 17.** T-type classifications compared to the GZ2 vote fractions for spiral tightness (Task 10). Left-hand side is separated by NA10 T-types; right-hand side is EFIGI T-types. Data are for the 5 515 (NA10) and 1 907 (EFIGI) galaxies, respectively, with at least 10 GZ2 votes for Task 10. The number of galaxies per vote fraction bin is given along the top of each panel.

responses to the middle options (‘just noticeable’ and ‘obvious’) are both symmetrically distributed around a peak near 0.5.

‘No bulge’ galaxies in GZ2 are dominated by Sc and Sd spirals. For vote fractions above 0.1, 81 per cent of galaxies are Sc or later; this rises to 100 per cent for vote fractions higher than 0.6. ‘Just noticeable’ galaxies show a smooth change in T-type distribution; galaxies with low  $p_{\text{justnoticeable}}$  are mostly S0 and Sa, while high vote fractions are Sb–Sd. ‘Obvious’ bulge galaxies are almost a mirror image of the ‘just noticeable’ data; low vote fractions are Sb–Sd galaxies, and high vote fractions are S0–Sa galaxies. Inspection of the few Sa galaxies with  $p_{\text{obvious}} < 0.2$  reveals that these are universally very tightly wound spirals with point-source like bulges. Among galaxies classified as ‘dominant’, less than 10 galaxies have vote fractions above 0.6 (which are a diverse mix of S0, Sa and Sd). Most remaining galaxies have dominant vote fractions of less than 0.1; the T-types of the remaining galaxies between 0.1 and 0.6 mostly contain S0 and Sa spirals. There are also no Sc galaxies with a dominant bulge marked in GZ2.

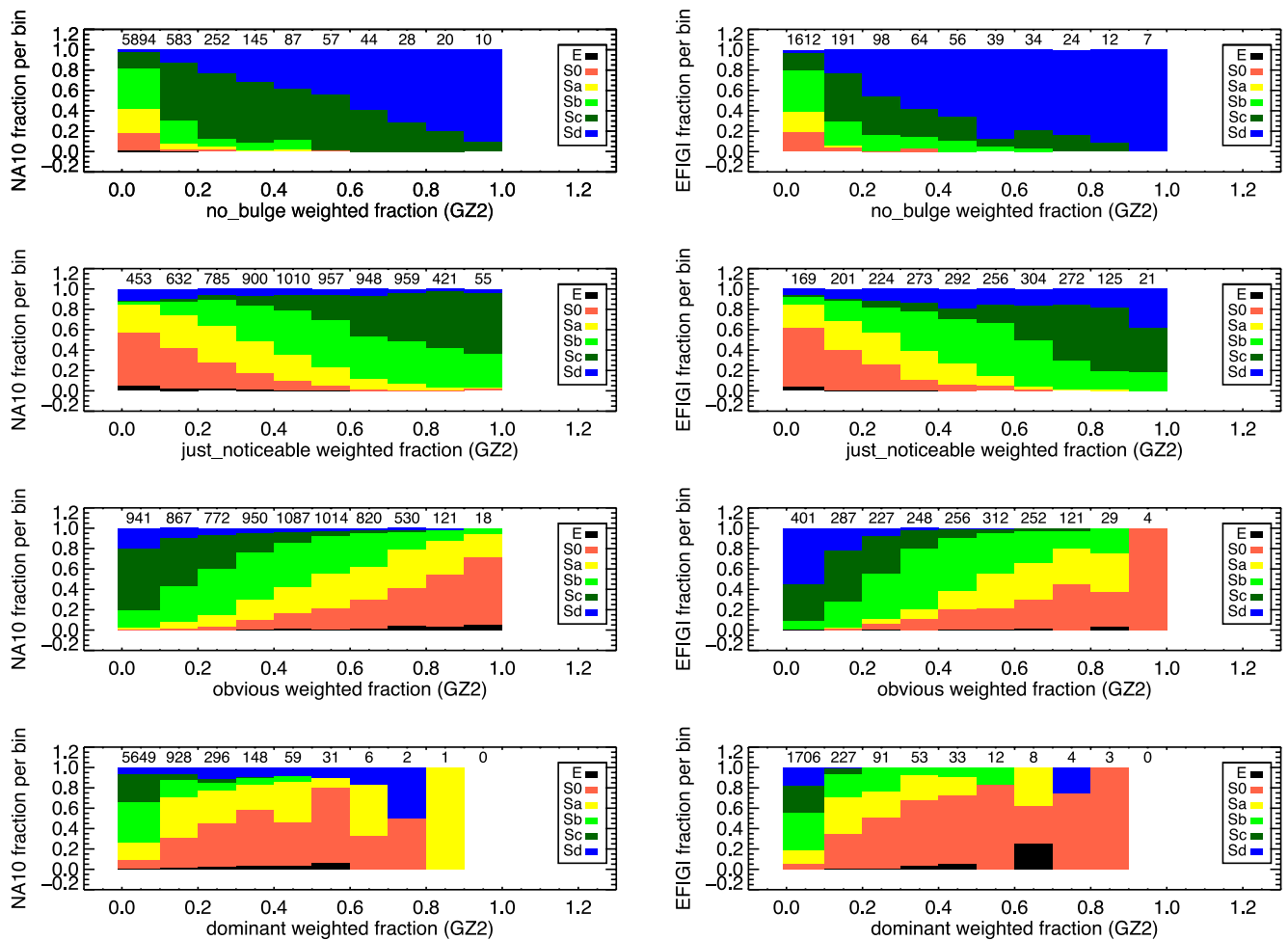
The link to T-type is more sharply defined for GZ2 bulge prominence than for spiral tightness, according to expert classifications. Very clean samples of late-type (Sb–Sd) spirals can be selected using only the ‘no bulge’ parameter; additional samples with  $\sim 10$  per cent contamination can be selected with the ‘just noticeable’ and ‘obvious’ distributions. Elliptical galaxies that have bulge prominence classified in GZ2 are most often ‘dominant’, but there is no obvious separation of ellipticals from disk galaxies based on this task alone.

EFIGI T-types also correlate strongly with GZ2 bulge dominance. More than 90 per cent of galaxies with  $p_{\text{nobulge}} > 0.5$  are late-type spirals, with the bulk of these Sd galaxies. Both  $p_{\text{justnoticeable}}$  and  $p_{\text{obvious}}$  show a continuum of T-types as the vote fractions increase, with Sc and Sd galaxies having high vote fractions for the former and S0, Sa and Sb galaxies in the latter. Galaxies with high vote fractions for  $p_{\text{dominant}}$  are primarily S0s, along with a few elliptical galaxies that had enough votes as disk galaxies in GZ2 to answer the bulge classification question.

Since Hubble types are based on both the relative size of the bulge and the extent to which arms are unwound (Hubble 1936), we explored whether the combination of Tasks 05 and 10 from GZ2 can be mapped directly to T-types. The numerical T-types from NA10 were fit with a linear combination of the GZ2 vote fractions for the bulge dominance and arms winding tasks. The best-fitting result using symbolic regression (Schmidt & Lipson 2009), however, depends *only* on parameters relating to bulge dominance:

$$T - \text{type} = 4.63 + 4.17 \times p_{\text{nobulge}} - 2.27 \times p_{\text{obvious}} - 8.38 \times p_{\text{dominant}}. \quad (19)$$

Note that the  $p_{\text{justnoticeable}}$  is implicitly included in this equation since the vote fractions for Task 05 must sum to 1. Inclusion of any vote fractions for arms winding responses made no significant difference in the  $r^2$  goodness-of-fit metric.



**Figure 18.** T-type classifications compared to the GZ2 vote fractions for bulge prominence (Task 05). Left-hand side is separated by NA10 T-types; right-hand side is EFIGI T-types. Data are for the 7 120 (NA10) and 2 321 (EFIGI) galaxies, respectively, with at least 10 GZ2 votes for Task 05. The number of galaxies per vote fraction bin is given along the top of each panel.

This technique assumes that the difference in morphology is well defined by mapping T-types to a linear scale, which is far from being justified. Fig. 19 shows the distribution of the GZ2-derived T-type from equation (19) compared to the NA10 values. The large amounts of overlap between adjoining T-types show that this clearly does not serve as a clean discriminator. One could make a cut between the earliest (Sa) and latest (Sd) spiral types based only on the vote fractions. Alternatively, the relative numbers of galaxies could be used as the weights to construct the *probability* of a given T-type. This has yet to be conclusively tested.

The distributions in Fig. 19 also show that S0 galaxies in particular would typically be mistakenly judged as later types (overlapping strongly with Sa) on average using only this metric. This is consistent with the ‘parallel-sequence’ model of van den Bergh (1976) and later revised by several groups (including Cappellari et al. 2011; Laurikainen et al. 2011; Kormendy & Bender 2012).

Finally, we note that Simmons et al. (2013) identified a significant effect in which nuclear point sources, such as AGN, can mimic bulges in the GZ2 classifications. This has not been accounted for in this analysis, but could potentially be addressed by separating the sample into AGN and quiescent galaxies (via BPT line ratios) and looking for systematic differences between the two samples.

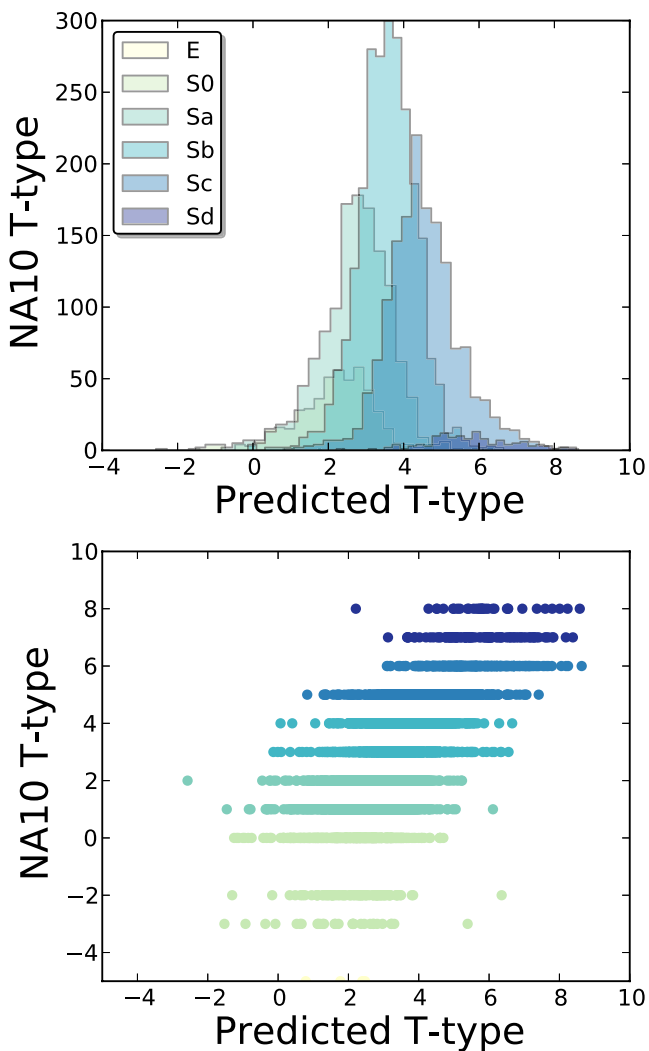
### 5.2.5 Bulge prominence

EFIGI measures the bulge/total light ratio ( $B/T$ ) in each galaxy, with the attribute strength corresponding to the relative contribution of the bulge. Elliptical galaxies have  $B/T = 1$  and irregular galaxies  $B/T = 0$ . Baillard et al. (2011) show that  $B/T$  is correlated with arm curvature and anticorrelated with the presence of flocculent structure and hotspots, consistent with movement along the Hubble sequence.

Fig. 20 (left-hand panels) show the relationship between  $B/T$  and the GZ2 bulge dominance vote fractions for oblique disk galaxies.  $p_{\text{obvious}}$  is strongly correlated ( $\rho = 0.65$ ) with  $B/T$ , while  $p_{\text{justnoticeable}}$  has a nearly equal and opposite anticorrelation. Very few galaxies in the sample have either  $p_{\text{nobulge}} > 0$  or  $p_{\text{dominant}} > 0$ , but those that do show corresponding changes in the EFIGI  $B/T$ . In particular, the number of galaxies with  $B/T = 0$  and  $p_{\text{justnoticeable}} > 0$  reinforces the results of Simmons et al. (2013), who showed that GZ2 bulge prominences increase with the presence of central point sources in the image (such as AGN).

### 5.2.6 Arm curvature

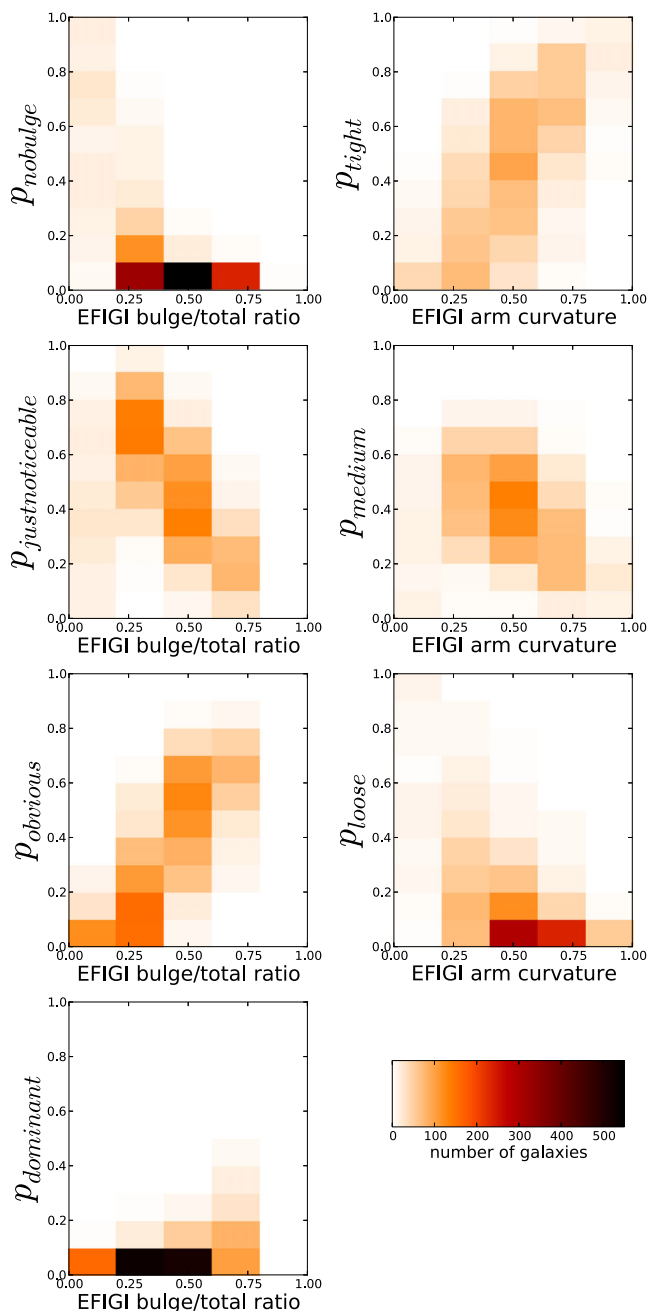
EFIGI also measures the arm curvature of each galaxy, with classifications very similar to the ‘tightness of spiral arms’ question (Task



**Figure 19.** Predicted T-type classifications as fit by symbolic regression to the GZ2 data. Galaxies are colour coded by their morphologies as identified by NA10. The top panel shows the histogram of predicted T-type based on equation (19). The bottom shows the predicted T-types plotted against their NA10 values. Galaxies shown are only those with sufficient answers to characterize the arms winding and arms number GZ2 tasks, which selects heavily for late-type galaxies. This explains the lack of ellipticals in the plot, but highlights the fact that S0 galaxies do not agree well with the linear sequence.

10) in GZ2. If both expert and citizen science classifiers agree, one would expect galaxies with high GZ2 vote fractions for tight spirals to have EFIGI classifications at 0.75–1.0; GZ2 galaxies classified as medium spirals to be centred around 0.5; and loose spirals to have arm curvatures of 0.0–0.25.

The EFIGI arm curvature classifications broadly follow the trends expected from matching targets with GZ2.  $p_{\text{tight}}$  is the most strongly correlated with the EFIGI arm curvature parameter (Fig. 20, right-hand panels). The Spearman’s correlation coefficient for tight spirals is  $\rho = 0.62$ . The medium spiral vote fraction is clustered in the middle of the EFIGI values, where galaxies with the highest GZ2 vote fraction have EFIGI values of 0.25–0.50, with  $\rho = -0.26$ . Loose spirals shows an anti-correlation ( $\rho = -0.54$ ); very few galaxies have GZ2 vote fractions above 0.5, but those which do have low EFIGI arm curvature values at 0.25 or below.



**Figure 20.** Left: EFIGI bulge/total ratio attributes compared to GZ2 vote fractions for ‘bulge prominence’. Right: EFIGI arm curvature attributes compared to GZ2 vote fractions for ‘arms winding’. Data are for the 1 544 oblique disk galaxies in both samples.

### 5.3 Automated classifications

Huertas-Company et al. (2011, HC11) have generated a large set of morphological classifications for the SDSS spectroscopic sample using an automated Bayesian approach. The broad nature of their probabilities (four broad morphological categories), do not directly relate to the majority of the GZ2 fine structure questions, such as bar or spiral arm structure. Comparison between the two samples, however, is useful to demonstrate the effect that smaller scale features (as classified by GZ2) may have on automatically assigned morphologies.

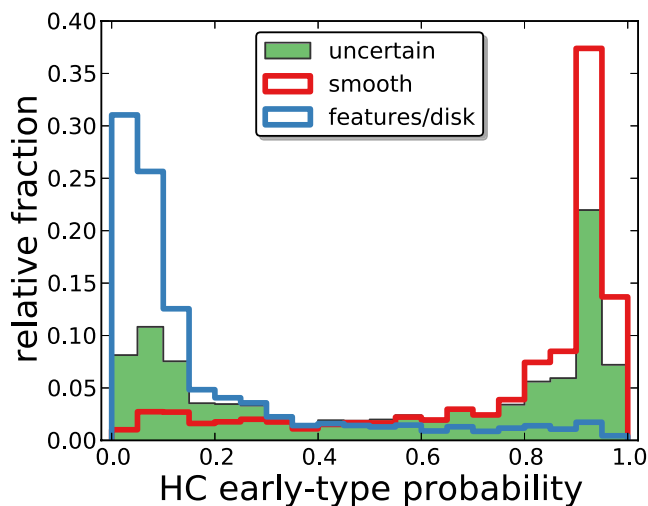
The sample classified by HC11 is limited to galaxies with  $z < 0.25$  that have both good photometric data and clean spectra. Their total of 698 420 galaxies is approximately twice the size of GZ2. The HC11 sample goes to fainter magnitudes, with more than 400 000 galaxies below the GZ2 limit of  $m_r > 17$ . Their morphological classification algorithm is implemented with support vector machine (SVM) software that tries to find boundaries between regions in  $N$ -dimensional space, where  $N$  is determined by criteria including morphology, luminosity, colour and redshift (Huertas-Company et al. 2008). The training set is the 2 253 galaxies in Fukugita et al. (2007), which are already classified by T-type. Each galaxy is assigned a probability of being in one of four sub-classes: E, S0, Sab and Scd (the latter two combining their respective late-type categories).

We note that the inclusion of colour means that HC11 classifications are not purely morphological, but include information about present-day star formation as well as the dynamical history which determines morphology. Studies of red spiral (Masters et al. 2010) and blue elliptical galaxies (Schawinski et al. 2009), for example, demonstrate the advantages of keeping these criteria separate.

Huertas-Company et al. (2011) directly compared their results to the Galaxy Zoo sample from Lintott et al. (2011). They found that robust classifications in Galaxy Zoo (flagged as either confirmed ellipticals or spirals) have median probabilities of 0.92 according to their algorithm, indicating that sure Galaxy Zoo classifications are also sure in their catalogue. They also showed a near-linear relationship between the Galaxy Zoo debiased vote fraction and the HC11 probabilities. This is one of the first independent confirmations that the vote fractions may be related to the actual *probability* of a galaxy displaying a morphological feature.

Fig. 21 shows the distributions of the HC11 early- and late-type probabilities for GZ2 galaxies robustly identified ( $p > 0.8$ ) as either smooth or having features/disks. The median HC11 early-type probability for GZ2 ellipticals is 0.85, and the late-type probability for GZ2 spirals is 0.95. This confirms the result that robust classifications in Galaxy Zoo agree with the automated algorithm for broad morphological categories.

An exception to this is a population of galaxies classified as ‘smooth’ by GZ2, but which have very low early-type probabilities



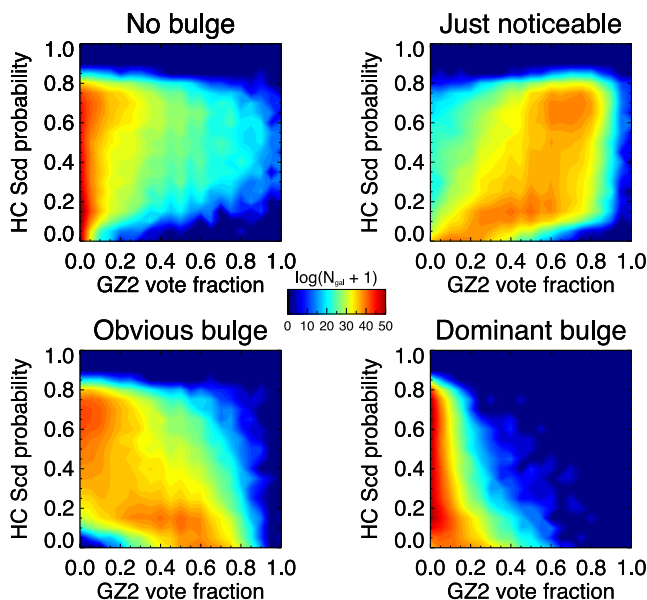
**Figure 21.** Distribution of HC11 early-type probabilities for galaxies split by their GZ2 classification. Data for smooth and features/disk are for galaxies with ‘clean’ flags in Table 5; the uncertain classifications comprise galaxies with no flags set for Task 01.

from HC11 (Fig. 21). The mean GZ2 vote fraction for these galaxies is consistent with those with high early-type probabilities – these galaxies are not marginally classified as ellipticals in GZ2. The roundness of the galaxy (Task 07 in GZ2) seems to play some role, as the low-HC11 smooth galaxies have fewer round galaxies and many more ‘cigar-shaped’ galaxies in this sample. A high axial ratio might train the HC11 algorithm to infer the existence of a disk; the absence of any obvious spiral features or bulge/disk separation (verified by eye in a small sub-sample of the images) lead GZ2 to categorize these as ‘smooth’. There is a clear dependence on apparent magnitude; the lower peak disappears if only galaxies with  $r < 16$  are included. Early-type galaxies that disagree with the HC11 classification are also significantly bluer, with respective colours of  $(g - r) = 0.67$  and  $(g - r) = 0.97$ . Since the SVM method does include SDSS colours as a parameter, we conjecture that the low HC11 early-type probability is in part due to the fact that they are blue, in addition to morphological features such as shape and concentration.

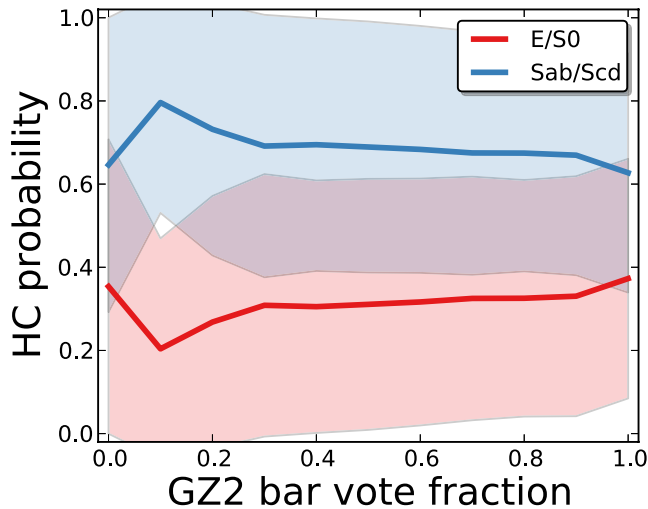
Fig. 21 also shows the distribution of ‘uncertain’ galaxies, for which none of the responses for Task 01 had a vote fraction  $> 0.8$ . The HC11 probability for these galaxies is bimodal, with the larger fraction classified as HC11 late-type and a smaller fraction as HC11 early-type.

Similar to the results from expert visual classifications, morphology in HC11 has a strong dependence on bulge dominance (as measured from GZ2). Fig. 22 shows the HC11 late-type spiral probability for disk galaxies as a function of the GZ2 vote fraction for bulge dominance. Since the majority of galaxies have both low  $p_{\text{nobulge}}$  and  $p_{\text{dominant}}$ , the automated probabilities are primarily flat. There is a slight correlation between no bulge and later type galaxies – even at  $p_{\text{nobulge}} \simeq 0.8$ , though, the HC11 algorithm gives galaxies roughly equivalent probabilities between 0.2 and 0.8.

The relationship between bulge dominance and late-type probability is much stronger for the two intermediate responses for GZ2. Galaxies for which  $p_{\text{justnoticeable}} > 0.6$  have a rapid increase in their late-type probabilities, with a sharp transition from the constant



**Figure 22.** Huertas-Company et al. (2011) late-type spiral probability as a function of the GZ2 vote fraction for bulge dominance. The colour of the contours is  $\log(N_{\text{gal}} + 1)$ , where  $N_{\text{gal}}$  ranges from 0 to  $1.5 \times 10^3$ . Data are the 54 987 oblique disk galaxies appearing in both GZ2 and HC11.



**Figure 23.** HC11 probabilities as a function of GZ2 bar vote fraction for 54 987 oblique disk galaxies. Points give the mean probability in each bin of 0.1 width; shaded areas give the measured  $1\sigma$  standard deviation.

late-type probability between 0.25 and 0.6. As expected, the opposite effect occurs for obvious bulges; a vote fraction of  $p_{\text{obvious}} < 0.2$  gives a very strong probability of being an Scd galaxy, while galaxies with  $p_{\text{obvious}} > 0.5$  are favoured to be classified as Sb or earlier.

Finally, we examined the potential effect of bars on the automated classifications. Fig. 23 shows the average HC11 probability as a function of GZ2  $p_{\text{bar}}$  for oblique disk galaxies. The relative proportions of galaxies as classified by HC11 is flat as a function of GZ2  $p_{\text{bar}}$ , with 31 percent for early-type and 69 percent late-type. The presence of a bar thus does not strongly affect automated classifications, at least as far as distinguishing early- from late-type galaxies.

## 6 CONCLUSIONS

We present the data release for the GZ2 project, which used crowd-sourced votes from citizen scientist classifiers to characterize morphology of more than 300 000 galaxies from the SDSS DR7. GZ2 classified *gri* colour composite images selected on the basis of magnitude ( $m_r < 17$ ), angular size ( $r_{90} > 3$  arcsec), and redshift ( $0.0005 < z < 0.25$ ) criteria. Deeper images from Stripe 82 are also included at both normal and co-added image depths.

GZ2 expands on the original Galaxy Zoo results by classifying a large array of fine morphological structures. In addition to previous distinctions between elliptical and spiral galaxies, GZ2 identifies the presence of bars, spiral structure, dust lanes, mergers, disturbed/interacting morphologies and gravitational lenses. It also quantifies the relative strengths of galactic bulges (both edge-on and face-on), the tightness and multiplicity of spiral arms and the relative roundness of elliptical galaxies. Classification was done via a multistep decision tree presented to users in a web-based interface. The final catalogue is the result of nearly 60 million individual classifications of images.

Data reduction for the catalogue begins by weighting individual classifiers. Repeat classifications of objects by the same user are omitted from the catalogue, and then an iterative weighting scheme is applied to users for each task based on their overall consistency. Votes for each galaxy are combined to generate the overall classification; the strength of a particular feature is measured by the fraction of votes for a particular response (among all possible re-

sponses). The nature of the GZ2 classification scheme means that these vote fractions are akin to conditional probabilities, however – for example, a galaxy must first be identified both as possessing a disk *and* as being ‘not edge-on’ to measure  $p_{\text{bar}}$ .

Vote fractions for each response are also adjusted for classification bias, the effect of fine morphological features being more difficult to detect in smaller and fainter galaxies. Corrections to determine the debiased vote fractions are derived directly from the GZ2 data itself.

The final catalogue consists of five tables, comprising morphological classifications for the GZ2 main sample (separated into galaxies with spectroscopic and photometric redshifts) and galaxies from Stripe 82 (for normal-depth and two sets of co-added images with spectroscopic redshifts). Data for each galaxy includes (for each response) the raw and weighted number of votes, the raw and weighted vote fractions, the debiased vote fraction and an optional flag which indicates if a feature has been robustly identified. Portions of the data are presented in Tables 5–9; full machine-readable tables are available at <http://data.galaxyzoo.org> and in SDSS Data Release 10.

We have compared the GZ2 classifications in detail to several other morphological catalogues. Early and late-type classifications are consistent with results from the original Galaxy Zoo, especially for galaxies in the clean samples. Expert catalogues (NA10; Bailard et al. 2011) show good agreement for galaxies with medium to strong bars; GZ2 is less confident in identifying expert-classified weak and/or nuclear bars. In ringed galaxies, GZ2 recovers the majority of outer rings, but relatively few inner or nuclear rings due to the design of the GZ2 question. Pairs and interacting galaxies are more difficult to reliably cross-match in a clean sample, although Casteels et al. (2013) have already shown that the GZ2 ‘loose winding arms’ parameter is a reliable proxy for interaction. The GZ2 bulge dominance parameter strongly correlates with the Hubble T-type from both expert catalogues. Adding GZ2 measurements of the spiral arm tightness, though, does not increase the T-type classification accuracy. Automated classifications from Huertas-Company et al. (2011) agree well with GZ2 in separating elliptical and late-type spirals, although identification of S0 galaxies still represents a challenge.

GZ2 contains more than an order of magnitude more galaxies than the largest comparable expert-classified catalogues (NA10, EFIGI) while still classifying detailed morphological features not replicable by automated classifications. GZ2 data have already been used to demonstrate a relationship between bar fraction and the colour, gas fractions and bulge size of disk galaxies (Masters et al. 2011, 2012), as well as studies of the bar colour and length itself (Hoyle et al. 2011). The size of the catalogues has allowed for the discovery and study of comparatively rare objects, such as early-type dust lane galaxies (Kaviraj et al. 2012) and bulgeless AGN hosts (Simmons et al. 2013). Direct use of the GZ2 likelihoods has also been used to quantify the environmental dependence on morphology, showing a correlation for barred and bulge-dominated galaxies (Skibba et al. 2012) and identifying reliable signatures of interaction from GZ2 data (Casteels et al. 2013).

The scientific productivity of the Galaxy Zoo projects has already shown that the use of multiple independent volunteer classifications is a robust method for the analysis of large data sets of galaxy images. This public release of the GZ2 catalogue intends to build on this success, by demonstrating the reliability and benefit of these classifications over both expert and automated classifications. We publicly release these GZ2 classifications both as a rich data set that can be used to study galaxy evolution, and as training sets for refining future automated classification techniques.



## ACKNOWLEDGEMENTS

The data in this paper are the result of the efforts of the GZ2 volunteers, without whom none of this work would be possible. Their efforts are individually acknowledged at <http://authors.galaxyzoo.org>. Please contact the author(s) to request access to research materials discussed in this paper.

The development of GZ2 was supported by The Leverhulme Trust. KWW and LFF would like to acknowledge support from the US National Science Foundation under grant DRL-0941610. CJL acknowledges support from the Science and Technology Facilities Council (STFC) Science in Society programme. KS gratefully acknowledges support from Swiss National Science Foundation Grant PP00P2\_138979/1. TM acknowledges funding from the STFC ST/J500665/1. RCN was partially supported by STFC grant ST/K00090X/1. BDS acknowledges support from Worcester College, Oxford, and from the Oxford Martin School programme on computational cosmology.

This research made use of Montage, funded by the National Aeronautics and Space Administration's Earth Science Technology Office, Computation Technologies Project, under Cooperative Agreement Number NCC5-626 between NASA and the California Institute of Technology. Montage is maintained by the NASA/IPAC Infrared Science Archive. It also made extensive use of the Tool for Operations on Catalogues And Tables (TOPCAT), which can be found at <http://www.starlink.ac.uk/topcat/> (Taylor 2005, 2011).

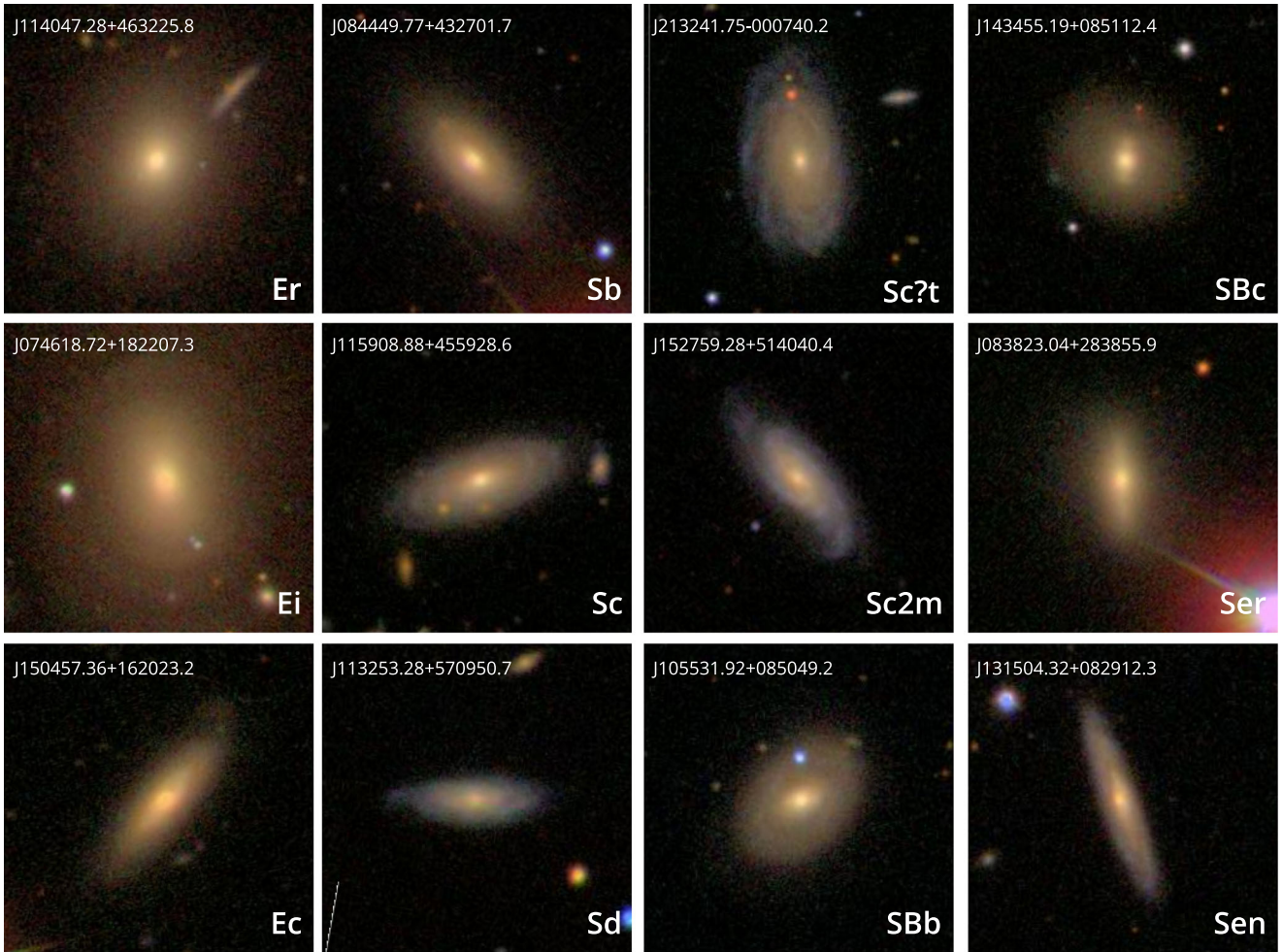
Funding for the SDSS and SDSS-II has been provided by the Alfred P. Sloan Foundation, the Participating Institutions, the National Science Foundation, the US Department of Energy, the National Aeronautics and Space Administration, the Japanese Monbukagakusho, the Max Planck Society and the Higher Education Funding Council for England. The SDSS website is <http://www.sdss.org/>.

The SDSS is managed by the Astrophysical Research Consortium for the Participating Institutions. The Participating Institutions are the American Museum of Natural History, Astrophysical Institute Potsdam, University of Basel, University of Cambridge, Case Western Reserve University, University of Chicago, Drexel University, Fermilab, the Institute for Advanced Study, the Japan Participation Group, Johns Hopkins University, the Joint Institute for Nuclear Astrophysics, the Kavli Institute for Particle Astrophysics and Cosmology, the Korean Scientist Group, the Chinese Academy of Sciences (LAMOST), Los Alamos National Laboratory, the Max-Planck-Institute for Astronomy (MPIA), the Max-Planck-Institute for Astrophysics (MPA), New Mexico State University, Ohio State University, University of Pittsburgh, University of Portsmouth, Princeton University, the United States Naval Observatory and the University of Washington.

## REFERENCES

Abazajian K. N. et al., 2009, *ApJS*, 182, 543  
 Aguerri J. A. L., Méndez-Abreu J., Corsini E. M., 2009, *A&A*, 495, 491  
 Ahn C. P. et al., 2013, preprint (arXiv:1307.7735)  
 Annis J. et al., 2011, preprint (arXiv:1111.6619)  
 Baillard A. et al., 2011, *A&A*, 532, A74  
 Bamford S. P. et al., 2009, *MNRAS*, 393, 1324  
 Banerji M. et al., 2010, *MNRAS*, 406, 342  
 Barazza F. D., Jogee S., Marinova I., 2008, *ApJ*, 675, 1194  
 Blanton M. R. et al., 2003, *ApJ*, 592, 819  
 Buta R., 1995, *ApJS*, 96, 39  
 Buta R. J., 2013, in Oswalt T. D., Keel W. C., eds, *Galaxy Morphology*. Springer, Berlin

Buta R., Combes F., 1996, *Fundam. Cosm. Phys.*, 17, 95  
 Buta R., Corwin H. G., Jr, Odewahn S. C., 2002, in Athanassoula E., Bosma A., Mujica R., eds, *ASP Conf. Ser. Vol. 275, Disks of Galaxies: Kinematics, Dynamics and Perturbations*. Astron. Soc. Pac., San Francisco, p. 102  
 Cappellari M. et al., 2011, *MNRAS*, 416, 1680  
 Casteels K. R. V. et al., 2013, *MNRAS*, 429, 1051  
 Csabai I. et al., 2003, *AJ*, 125, 580  
 Darg D. W. et al., 2010, *MNRAS*, 401, 1043  
 Davis D., Hayes W., 2013, preprint (arXiv:1301.5484)  
 de Vaucouleurs G., de Vaucouleurs A., Corwin H. G., Jr, Buta R. J., Paturel G., Fouqué P., 1991, *Third Reference Catalogue of Bright Galaxies*. Springer-Verlag, Berlin  
 Fischer D. A. et al., 2012, *MNRAS*, 419, 2900  
 Fortson L. et al., 2012, in Way M. J., Scargle J. D., Ali K. M., Srivastava A. N., eds, *Galaxy Zoo: Morphological Classification and Citizen Science*. CRC Press, Boca Raton, p. 213  
 Fukugita M. et al., 2007, *AJ*, 134, 579  
 Hinshaw G. et al., 2012, preprint (arXiv:1212.5226)  
 Hoyle B. et al., 2011, *MNRAS*, 415, 3627  
 Hubble E. P., 1926, *ApJ*, 64, 321  
 Hubble E. P., 1936, *Realm of the Nebulae*. Yale Univ. Press, New Haven  
 Huertas-Company M., Rouan D., Tasca L., Soucail G., Le Fèvre O., 2008, *A&A*, 478, 971  
 Huertas-Company M., Aguerri J. A. L., Bernardi M., Mei S., Sánchez Almeida J., 2011, *A&A*, 525, A157  
 Jacob J. C. et al., 2010, Montage: An Astronomical Image Mosaicking Toolkit. Astrophysics Source Code Library  
 Kaviraj S. et al., 2012, *MNRAS*, 423, 49  
 Kendrew S. et al., 2012, *ApJ*, 755, 71  
 Kormendy J., Bender R., 2012, *ApJS*, 198, 2  
 Kormendy J., Kennicutt R. C., Jr, 2004, *ARA&A*, 42, 603  
 Laurikainen E., Salo H., Buta R., Knapen J. H., 2011, *MNRAS*, 418, 1452  
 Lintott C. J. et al., 2008, *MNRAS*, 389, 1179  
 Lintott C. et al., 2011, *MNRAS*, 410, 166  
 Lupton R., Blanton M. R., Fekete G., Hogg D. W., O'Mullane W., Szalay A., Wherry N., 2004, *PASP*, 116, 133  
 Martig M., Bournaud F., Croton D. J., Dekel A., Teyssier R., 2012, *ApJ*, 756, 26  
 Masters K. L. et al., 2010, *MNRAS*, 405, 783  
 Masters K. L. et al., 2011, *MNRAS*, 411, 2026  
 Masters K. L. et al., 2012, *MNRAS*, 424, 2180  
 Nair P. B., Abraham R. G., 2010, *ApJS*, 186, 427 (NA10)  
 Nieto-Santisteban M. A., Szalay A. S., Gray J., 2004, in Ochsenbein F., Allen M. G., Egret D., eds, *ASP Conf. Ser. Vol. 314, Astronomical Data Analysis Software and Systems (ADASS) XIII*. Astron. Soc. Pac., San Francisco, p. 666  
 Roberts M. S., Haynes M. P., 1994, *ARA&A*, 32, 115  
 Sandage A., 1961, *The Hubble atlas of galaxies*. Carnegie Institute of Washington Publ., Washington  
 Sandage A., Bedke J., 1994, *The Carnegie Atlas of Galaxies. Volumes I, II*. Carnegie Institute of Washington Publ., Washington  
 Schawinski K. et al., 2009, *MNRAS*, 396, 818  
 Schmidt M., Lipson H., 2009, *Sci*, 324, 81  
 Schwamb M. E. et al., 2012, *ApJ*, 754, 129  
 Simmons B. D. et al., 2013, *MNRAS*, 429, 2199  
 Simpson R. J. et al., 2012, *MNRAS*, 424, 2442  
 Skibba R. A. et al., 2012, *MNRAS*, 423, 1485  
 Smith A. M. et al., 2011, *MNRAS*, 412, 1309  
 Stoughton C. et al., 2002, *AJ*, 123, 485  
 Strauss M. A. et al., 2002, *AJ*, 124, 1810  
 Taylor M. B., 2005, in Shopbell P., Britton M., Ebert R., eds, *ASP Conf. Ser. Vol. 347, Astronomical Data Analysis Software and Systems XIV*. Astron. Soc. Pac., San Francisco, p. 29  
 Taylor M., 2011, TOPCAT: Tool for Operations on Catalogues And Tables. Astrophysics Source Code Library  
 van den Bergh S., 1976, *ApJ*, 206, 883  
 York D. G. et al., 2000, *AJ*, 120, 1579



**Figure A1.** Example images with their GZ2 classifications (see Appendix A). Galaxies are randomly selected from the GZ2 catalogue; all galaxies lie in the redshift range  $0.050 < z < 0.055$ . Categories shown represent the twelve most common classifications in the GZ2 spectroscopic sample.

## APPENDIX A: GENERATING THE ABBREVIATION FOR A GZ2 MORPHOLOGICAL CLASSIFICATION

As part of the GZ2 data release (Tables 5–9), we provide a short abbreviation (*gz2\_class*) that indicates the most common consensus classification for the galaxy. We emphasize that the intent is not to create a new classification system; rather, this is only a convenient shorthand for interpreting portions of the GZ2 results.

The *gz2\_class* string is generated for each galaxy by taking the largest debiased vote fraction (beginning with Task 01) and selecting the most common response for each subsequent task in the decision tree.

Galaxies that are smooth (from Task 01) have *gz2\_class* strings beginning with ‘E’. Their degree of roundness (completely round, in-between and cigar-shaped) is represented by ‘r’, ‘i’ and ‘c’, respectively.

Galaxies with features/disks have *gz2\_class* strings beginning with ‘S’. Edge-on disks follow this with ‘er’, ‘eb’ or ‘en’ (with the second letter classifying the bulge shape as round, boxy or none). For oblique disks, the letter following ‘S’ is an upper-case ‘B’ if the galaxies have a bar. The bulge prominence (‘d’ = none, ‘c’ = just noticeable, ‘b’ = obvious, ‘a’ = dominant). Both bars and bulges

follow the same general trends as the Hubble sequence, although the correspondence is not exact. If spiral structure was identified, then the string includes two characters indicating the number (1, 2, 3, 4, +, ?) and relative winding (‘t’=tight, ‘m’=medium, ‘l’=loose) of the spiral arms.

Finally, any feature in the galaxy the users identified as ‘odd’ appears at the end of the string in parentheses: ‘(r)’=ring, ‘(l)’=lens/arc, ‘(d)’=disturbed, ‘(i)’=irregular, ‘(o)’=other, ‘(m)’=merger, ‘(u)’=dust lane.

Objects that are stars or artifacts have the *gz2\_class* string ‘A’.

For example,

- (i) Er = smooth galaxy, completely round.
- (ii) SBc2m = barred disk galaxy with a just noticeable bulge and two medium-wound spiral arm.
- (iii) Seb = edge-on disk galaxy with a boxy bulge.
- (iv) Sc(l) = disk galaxy with a just noticeable bulge, no spiral structure, and irregular morphology.
- (v) A = star.

Sample images of the twelve most common *gz2\_class* strings are shown in Fig. A1.

This paper has been typeset from a  $\text{\TeX}/\text{\LaTeX}$  file prepared by the author.