

Defining long-run agricultural trends:

A compilation of and concordance for the statistics gathered by the June Farm Census

Humphrey Southall and Paula Aucott

Great Britain Historical GIS Project,
Department of Geography,
University of Portsmouth.

Introduction

The Agricultural Census, also known as the June Farm Census or June Survey, was first taken on June 25th, 1866, following earlier attempts made to gather systematic data on agricultural production in 1795, 1798, 1801 and 1803. It took some years to achieve comprehensive coverage, but from 1866 onwards the June Farm Census has annually gathered statistics farm by farm on the area of each crop and the number of farm animals. The survey has always sent farmers a detailed form listing specific crops and animals. It sometimes also asked questions about amounts of land used under different forms of tenure and numbers of workers of different kinds. However, excluding the special case of the 1941 National Farm Survey, when surveyors were sent out to gather more qualitative information, farmers' responses were always strictly quantitative: the number of acres of each crop, or the number of animals of each type. The information gathered was therefore entirely a function of the questions on the form. Note that this is a fundamental difference from, for example, the Census of Population which usually asked a series of questions allowing a wide range of replies, such as "Occupation" or "Relationship to head of household", which were then put into a classification *after* the census had been taken.

This report has two main aims. Firstly, to document in detail what information was gathered at different dates, and to provide a framework for re-organising the data to enable constant measures to be computed over a long range of dates. Secondly, as far as possible to gather together all existing computerised versions of Farm Census data and provide some long-run standardised time series. Our main focus is on the period before 1969, as more recent data were computerised as the census was taken, and are held by Defra and already well documented on the National Archives web site.

The scope of the project was clearly limited by what information survives. Again with the exception of 1941, the schedules completed by farmers have not been retained, so the most detailed remaining data are parish-level summaries. A known problem with these is that many individual farms occupied land within more than one parish, so they were generally assigned to a particular parish based on the location of the farm house. We discuss the impact of this, and also the question of which set of parishes were actually being used: these did not exactly correspond with the set of Civil Parishes in existence on the day of the survey.

The parish-level summaries are hand-written sheets held in the National Archives at Kew, so extracting systematic data for any substantial area even for a single year requires a

Final Report: Defining long-run agricultural trends

substantial transcription project. We have identified and documented a number of such transcriptions made by academic researchers, but they mostly cover small areas and we have not been able to obtain computerised versions. The exception is a parish-level data set covering much of south-east England in 1877 and 1931, which we have enhanced and linked to our existing parish-level GIS, enabling both illustrative thematic mapping and further investigation of the detailed geography of the survey.

The parish-level summaries contain the same columns as the original farm-level schedules, and are the result of simply adding up the numerical responses from the farms within each parish. The parish-level statistics were then further summed to county-level, and these results were published in the annual volumes of Agricultural Statistics; these reports also include data on actual outputs, but these are beyond the scope of this report. Because the annual reports were printed, they are much easier to computerise, and by assembling existing computerised versions and doing a limited amount of new computerisation we have been able to assemble a time series with data for all English counties at least every ten years from 1869 to 1970. Just as there are issues with how the Farm Census defined parishes, we discuss how it defined “counties”, and how this changed.

In some senses, the primary result of this project is not this report but the information we have added to our own web site *A Vision of Britain through Time*. In that, the statistical data can be linked closely to the concordance of variables, and the relationships between the categories used at different dates explored in a more intuitive way. Under our primary funding from the Joint Information Systems Committee, the site is required to be kept running by the University of Portsmouth at least until 2014. A third output is a single Excel workbook assembling all the original county-level statistical data which has been deposited with both Defra and the UK Data Archive.

Methods

The current project was designed primarily as a survey of available data, documenting:

- What information was gathered by the Farm Census
- In what form has it been preserved
- What information is available in computerised form

The project was not required to computerise additional data, although some digitisation work was in fact done. Instead, we aimed to assemble as much data as possible that had already been computerised, and assemble it into a single data set. We were already in touch with other relevant researchers when the project began, and we contacted as many as possible in the early months of the project. This enabled us to locate two additional large transcriptions of county-level data and a number of researchers who had transcribed parish-level data (see appendix 2).

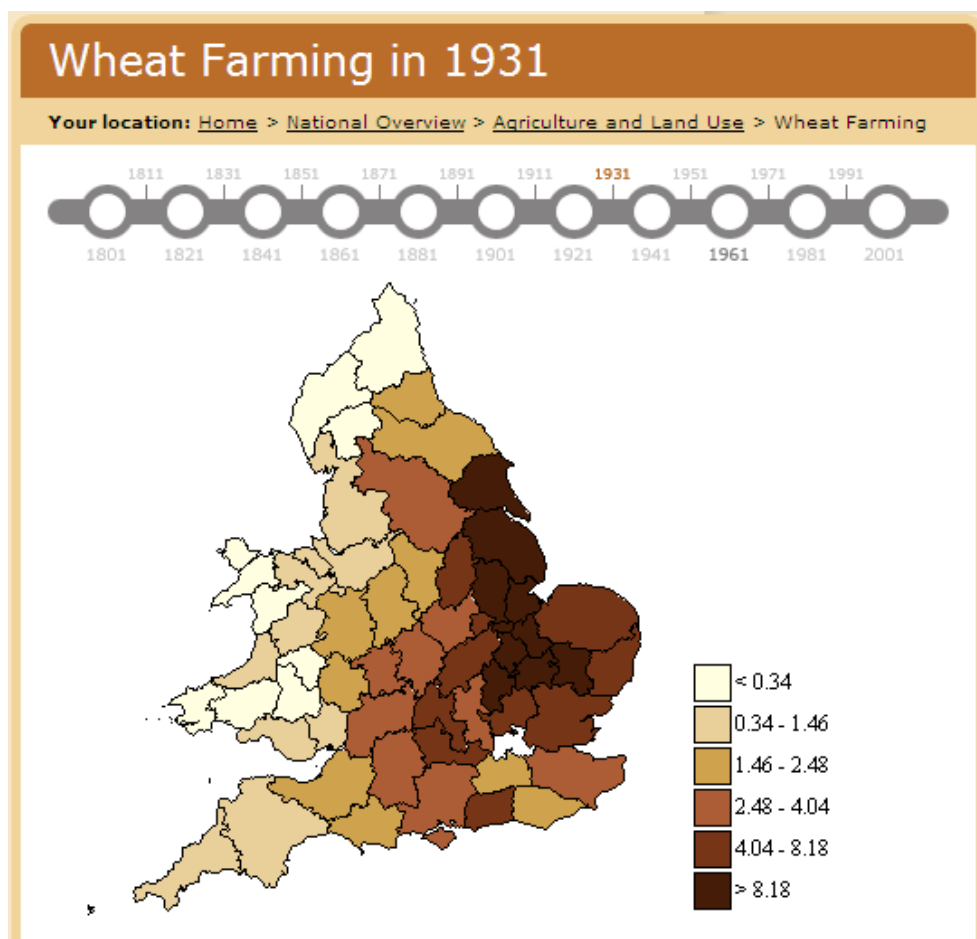
A major part of the project was the construction of a formal computerised record of what categories of data were gathered at different dates. This was constructed within the Data Documentation sub-System (DDS) within the Great Britain Historical GIS. The DDS is a relational implementation of the Aggregate Data Extension to the Data Documentation Initiative (DDI) standard (see <http://www.ddialliance.org>). This identifies **variables** which consist of **categories**, so in DDI terms the variable might be “Numbers of Sheep”, and the categories the different kinds of sheep identified on the Farm Census form. In the DDI framework, any change in the set of categories defines a new variable, and the census form changed frequently so our work defined whole sequences of variables/classification of crops, of sheep, of farm size and so on.

These constant changes in classifications obviously make comparisons over time difficult. We therefore grouped variables into **variable groups**, and then for each group defined a generalised variable to which the actual variables for individual years could be mapped. Inevitably, these generalised variables tend to be a “lowest common denominator”. Because classifications generally become more complex over time, categories used in early farm censuses are more likely to be distinguishable in the generalised variables; for example, our generalised classification of crops is able to separately identify wheat, barley, oats and rye, but many varieties of fruit and vegetables are grouped into a single “other category”. The advantage of our approach, however, is that our statistical database holds all the original data linked to the original classifications, and alternative generalised variables can be very easily defined.

As noted in the introduction, presenting the concordance on paper is much harder, but appendix 3 was generated from it. It is inevitably organised around our current sets of generalised variables, but we emphasise again that the underlying database is much more flexible.

The central aim of this project was to document, not to analyse, but we have in fact built two systems for analysing and mapping farm census data. Firstly, almost all the computerised county-level data we have located has been loaded into our web site, *A Vision of Britain through Time*, and we include details below of how to access this. Although extensive data have been on-line since early 2008, the current site has some

problems with the slightly *ad hoc* geography of the farm census, and the new version of the site to be launched in summer 2009 will provide greatly enhanced statistical mapping. Sample maps of county-level data from *Vision of Britain* are included below. The only county-level data we have not included are the time series constructed by the Welsh Assembly Government for Welsh counties, which are some way removed from raw transcriptions and cover years ending in 2 and 7.



Acreage of wheat as a percentage of Administrative County area

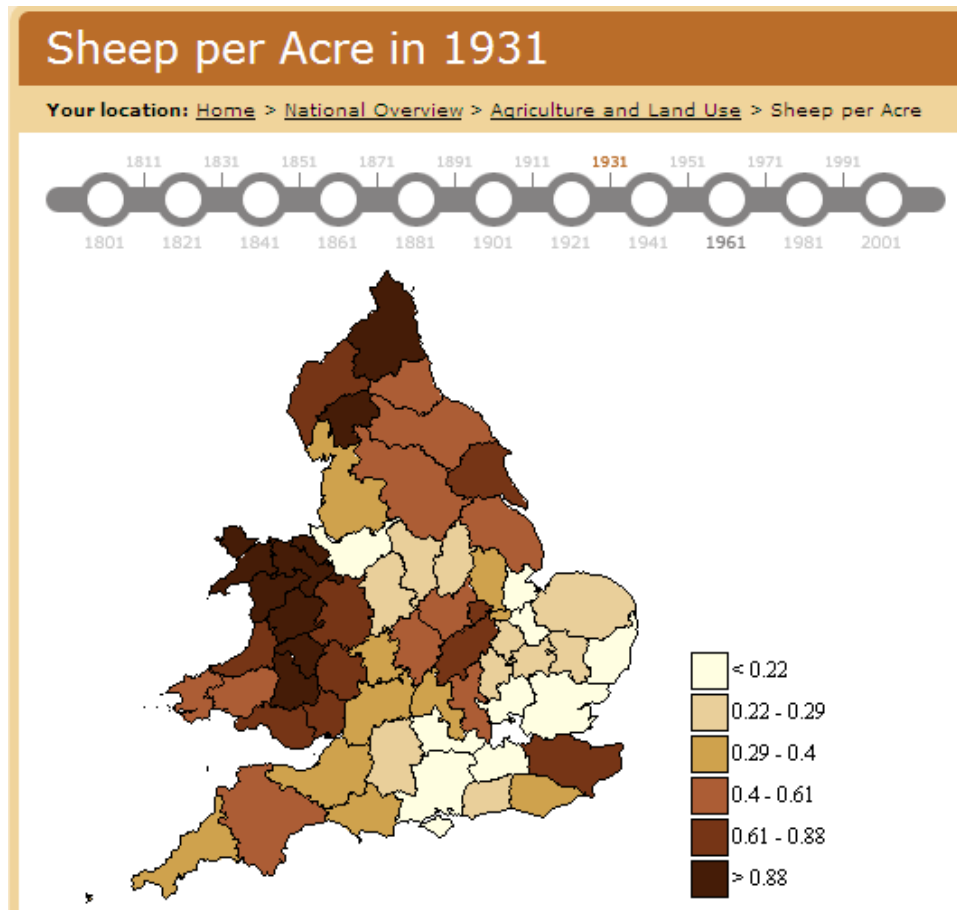
Secondly, we constructed a separate GIS to map parish-level statistics for south-east England. A major part of the reason for doing this was to better understand the geography of the farm survey itself, as discussed below, but we include some sample mapping from this system in appendix 1; the analytic potential will be obvious.

Surviving records

Every year each farmer was sent a form requiring information on the use of the land on their farms including details of the acreages of different crops and the numbers of various types of animal. The resulting farm-level returns have not been physically preserved, except for 1941 where they form part of the National Farm Survey held in the National Archives in MAF 32. Farms were assigned to parishes based on the location of the farmhouse, and the data summed by parish. The resulting parish summary sheets exist in manuscript form in MAF 68 and are the smallest surviving units of record back to 1866. The only exceptional years when the parish level results do not survive are 1868, 1871 and 1872.

Final Report: Defining long-run agricultural trends

As part of this project, the parish returns for 1877 and 1931 were examined in detail in order to enhance the computerised transcriptions described below. The sheets are grouped by county. In 1931, the parishes are ordered within the sheets by Petty Sessional¹ Division and then alphabetically. The 1931 sheets all include a person's name, presumably the compiler. The 1877 listing do not record this information, but are laid out in an identical fashion. This suggests that records for counties in all years were divided into Petty Sessional Divisions.



Total sheep as a percentage of Administrative County area

¹ Petty Sessions were the lowest tier in the English Court system. In 1974, the Petty Sessions courts were replaced by Magistrates Courts

Final Report: Defining long-run agricultural trends

Data were further collated at county level and these compilation sheets are also retained at The National Archives. Comparison between the information collected at parish level and the data held in the summary sheets reveals only small differences, the total area of crops in each parish is not recorded on the summary sheets and the total figures for each summary sheet are not in the compiled data. This county level data is published in a series of annual volumes of *Agricultural Returns* or *Agricultural Statistics*, available in various libraries.

The National Archives also holds other materials relating to the June Farm Census including general correspondence, committee papers and instructions for the completion of forms in various years. The example instructions given in 1964-7 states all land occupiers must have an acre and a quarter or more of land to qualify to fill in the form, and all land areas are to be measured to the nearest acre. The exceptions to this rule are holdings deemed residential with no significant agricultural or horticultural activity. Holdings of over 100 acres were to have their overall acreages rounded to the nearest number of acres: downwards for a quarter of an acre, upwards for three-quarters, and counts of half an acre were to be rounded up on odd counts and down on even counts. Any inaccurate or incomplete data was not to be used in the census statistics. There was also instruction on how to handle the transfer of holdings when filling in the forms. An instruction worth special mention is that given to remove all documents over two years old from the records with the exception of minister's correspondence, all enquires from solicitors and precedent cases including "necessity to render and disclosure letters" where retention was to be endorsed in red. This reveals that the retention of data associated with the June Farm Census has been actively managed by a policy of reduction for the purposes of storage and preservation.

Assembling pre-1969 statistics

Our main starting point for assembling county-level data was a set of transcriptions already made by Defra Farm Statistics of most of the data from the published reports from every tenth year from 1900 to 1980. They were supplied to us as a large set of separate spreadsheets, one for each county at each date, and a substantial amount of time was spent by a clerical assistant assembling these into a single dataset. We were able to extend this sequence back in time by adding transcriptions for 1869, 1871, 1885 and 1901 obtained from two academic collaborators, David Gatley and Robert Schwartz; these covered Wales as well as England. One obvious problem was that different researchers have followed different transcription strategies, so it was impossible to assemble a regular sequence. Partly because the *Vision of Britain* system was originally developed to disseminate Census of Population data, and therefore emphasised years ending in one, we decided to extend the thirty-year sequence started by David Gatley by computerising 1931 and 1961 as well as using his 1871 and 1901; with JISC funding, we extended this sequence to Scotland.

Our work to assemble county-level statistics into a single data set went well beyond cutting and pasting. Firstly, all data was checked back against the original *Agricultural Statistics* reports, and the variable/column names created by the transcribers were replaced by our own careful transcription of the labels used in the report; this was an essential stage in construction of the concordance. Secondly, all data were check-summed both across categories and across areas: we compared, for example, the listed total number of cattle with the sum of the various categories of cattle, and we compared

Final Report: Defining long-run agricultural trends

the totals for England with the sum of all the counties. This work revealed a large number of transcription errors, which we corrected, but virtually no numerical inconsistencies in the original reports (NB because we were computing both column-wise and row-wise check sums, we were sometimes able to identify misprints and correct them). Thirdly, computing these check sums often meant adding various totals needed to compute them, and at the same time we added some additional small but interesting tables. Our collated data set records, for each row of numbers, the number of the published table it comes from and the row or column within the table, so the final dataset is far more tightly linked to the original report than the transcriptions we received.

While transcriptions of data from the published county-level statistics are almost by definition computerised, transcribing the parish-level listings in the National Archives means firstly deciphering the hand written documents. Most projects which did this were in the 1970s, and the immediate result was another hand written document. Appendix 2 lists five projects which have transcribed parish-level data, but in at least one case the transcription is no easier to read than the original. Partly for this reason, and partly because most parish transcriptions were limited to a small number of parishes, we concentrated on two large transcriptions, for 1877 and 1931, made by a project at Edinburgh University directed by J.T. Coppock, which we obtained via the UK Data Archive at Essex University. The 1877 transcription covered fifteen counties in the south east of England, while the 1831 covered a smaller subset of twelve. The precise areas are shown on maps in appendix 1.

Parishes in the 1877 data were identified only by an identifying code number and had an accompanying list of names associated with the codes. The names from the accompanying list were added to the spreadsheet of data and an attempt was made to match the 1877 data with our existing polygons using a rough approximation of the names when they did not correspond exactly. This technique had very limited success as the names were often either wrongly spelt, wholly or partially missing or included question marks. To eradicate as many errors as possible we visited The National Archives to re-check the original parish summary sheets. They proved difficult to read, were not filed in the same order as that given on the spreadsheet and did not have the identifying numbers. However, with significant manual editing of the names we were able to achieve substantially better matching with the 1881 parish boundary polygons.

The 1931 data were again identified using a numerical code, but did not have an accompanying list of names identifying which parish was which. This involved a second visit to the National Archives and data from this year proved to be somewhat easier to identify than the earlier data. The parish names on the parish summary sheets were mostly numbered in the same way as those on the spreadsheet data and some of the handwriting was significantly easier to read. It should be noted however, that the 1931 data are covered by the Agricultural Act of 1947 relating to parish records created in 1918 or later. This requires that parish-level data may only be disclosed if based on four holdings or more. This probably explains why Coppock left out the 1931 names, but as he also did not include the number of holdings per parish, which does appear on the original forms, our work was unavoidably disclosive; but is being done for Defra itself.

The other major problem with the Coppock data is that the original forms, unlike the county listings, do not contain any totals, such as the total acreage of all crops. This made it impossible to compute any natural check sums, so it is hard to say how reliable

Final Report: Defining long-run agricultural trends

Coppock's transcription is, or how consistent the original data are. The one check that was possible was with the county totals from the published reports. Such a check was carried out for Bedfordshire with the results in the table below. The mean absolute percentage difference is 2.41, suggesting no very large problem, but of course if all the error comes from a single parish that parish might be wrong by a much larger percentage. These results are based on adding data for 137 parishes, so they help relatively little in identifying which parishes are in error.

Further work with the parish-level data is described below in the discussion of reporting geography.

Comparing 1877 Parish Data for Bedfordshire with Published Totals				
Category	Parish Total	Published Total	Difference	Percentage Difference
Corn Crops: Wheat	48,647	50,420	-1,773	-3.52
Corn Crops: Barley or Bere	30,787	32,039	-1,252	-3.91
Corn Crops: Oats	10,431	10,741	-310	-2.89
Corn Crops: Rye	402	401	1	0.25
Corn Crops: Beans	16,111	16,479	-368	-2.23
Corn Crops: Peas	6,908	7,256	-348	-4.80
Green Crops: Potatoes	4,420	4,511	-91	-2.02
Green Crops: Turnips and Swedes	11,724	11,973	-249	-2.08
Green Crops: Mangold	3,849	3,978	-129	-3.24
Green Crops: Carrots	584	601	-17	-2.83
Bare Fallow	12,690	13,160	-470	-3.57
Rotation Grass, etc: For Hay	10,497	10,713	-216	-2.02
Rotation Grass, etc: Not for Hay	6,986	6,892	94	1.36
Permanent Pasture: For Hay	26,304	26,917	-613	-2.28
Permanent Pasture: Not for Hay	48,894	50,038	-1,144	-2.29
Orchards	400	395	5	1.27
Market Gardens	543	539	4	0.74
Tree and Shrub Nurseries	10	10	0	0.00
Cows and Heifers in Milk or in Calf	9,135	9,293	-158	-1.70
Other Cattle: 2 Years of Age and Above	8,379	8,695	-316	-3.63
Other Cattle: Under 2 Years of Age	9,846	10,132	-286	-2.82
Sheep: 1 Year Old and Above	96,419	98,916	-2,497	-2.52
Sheep: Under 1 Year Old	58,011	59,736	-1,725	-2.89
Pigs	31,124	32,047	-923	-2.88

Documenting post-1969 statistics

The project brief included documenting post-1969 data, especially in the period up to 1986. The situation is complex, as retrospective data are available through EDINA's AgCensus service, through the National Digital Archive of Datasets (NDAD), and through Defra itself. The resources at EDINA and NDAD are well-documented:

- **EDINA AgCensus** holds grid square data for England and Wales for years between 1969 and 1997. They developed algorithms to convert the data supplied for administrative geographies into 1km grid square estimates. They then distributed Agricultural Census items over the 1km grid squares according to the most suitable land use category for each census item. A seven-way land-use classification of the same 1km grid squares, defined by the Landuse Framework, was used to define the categories. The seven land use categories were agricultural land, upland, woodland,

Final Report: Defining long-run agricultural trends

restricted agriculture - natural, restricted agriculture - artificial, urban and inland water. These 1km grid squares were then aggregated into 2km, 5km and 10km grid squares to avoid compromising the anonymity of the data and all data has been converted into metric measurements. The specific years available are 1969, 1972, 1976, 1979, 1981, 1988, 1993, 1994, 1995, 1996 and 1997. EDINA also hold copies of the original questionnaires as sent to farmers. Further details are here:

<http://www.edina.ac.uk/agcensus/description.html>

- The **National Digital Archive of Datasets** is operated for the National Archives by the University of London Computing Centre. They hold Farm Census data in summaries for parishes (1989-96) and counties (1994-6). This material is exhaustively documented on the NDAD site, and as it is all relatively recent it will not be further described here. Note, however, that the NDAD documentation describes the early history of computerisation of the Farm Census back to the 1960s:

<http://www.ndad.nationalarchives.gov.uk/CRDA/4/detail.html>

- Defra hold computerised farm level census data from 1975 (validated against published county totals). The **Defra Farm Statistics** web site itself includes a limited amount of historical data. These include the “Profiles” for the English counties, and for England as a whole, for every tenth year, which we collated as part of this project. Defra also make available (1) historical time series, for England as a whole and the UK as a whole, for 1983-2005, covering cattle, labour, land, pigs and sheep and poultry; (2) county size group data, giving the sizes of holdings of different crops, but only post 1997; (3) regional and county level data sets by year, 1999-2006, and Super-Output areas by year between 1990 and 2006. Variables include land use, crops, livestock and labour:

http://www.defra.gov.uk/esg/work_htm/publications/cs/farmstats_web/2_SURVEY_DATA_SEARCH/survey_data_search_overview.htm

The geography of the farm census

We have not been able to locate any systematic statement of the reporting geography used by the historical farm census. The term “agricultural parish” is sometimes used but nowhere defined. Inspection of the data suggests a number of problems.

Counties

Firstly, the published data are for “Counties”, but in the period between 1866 and 1969 three different kinds of county were used in statistical reporting: *Ancient Counties* were the traditional units which had come down from medieval times, but had complex and sometimes poorly defined boundaries due to some parishes having detached portions which were wholly surrounded by other parishes, and sometimes by another county. *Registration Counties* were the main reporting units used by Census of Population and the vital registration system between 1851 and 1911. The list of the names is almost identical to those of Ancient Counties, except that the three Ridings of Yorkshire were separate counties. However, Registration Counties were built up from Registration Districts and often had quite different detailed boundaries. Lastly, *Administrative Counties* were

Final Report: Defining long-run agricultural trends

introduced in 1888 and became the main reporting units for the Census of Population in 1911. Their boundaries were closer to those of the Ancient Counties than Registration Counties, but many Ancient Counties were divided into two or three Administrative Counties, including East and West Suffolk, East and West Sussex, the three Ridings of Yorkshire and the three Parts of Lincolnshire. The Isle of Wight, the Isle of Ely and the Soke of Peterborough were all separate Administrative Counties.

Up to 1910, the list of counties in the *Agricultural Statistics* reports is the same as Registration Counties, as the Yorkshire Ridings are listed separately. However, detailed examination of which parishes were listed in which county in the 1877 parish-level data showed that they were in fact following Ancient County definitions.

After 1910, the Farm Census clearly shifted to using Administrative Counties, as the Isle of Ely, the Soke of Peterborough and so on appear in the county listings. However, some *ad hoc* modifications were made. Firstly, while London does appear as a county up to 1920, from 1930 to 1960 the reports list “Middlesex and London” as a single unit. Middlesex was abolished with the creation of the Greater London Council in 1965, but rather than simply listing “Greater London”, the 1970 report lists data for two separate areas, “Greater London (Eastern)” and “Greater London (South Eastern)”. These seem to be based on the two economic planning regions on which London abutted, and of course most of the farming in Greater London was out at the edges. Secondly, between 1960 and 1970 the reports treat Suffolk as a single county even though it formed two Administrative Counties. The Administrative Counties of Huntingdonshire and the Soke of Peterborough, and of the Isle of Ely and Cambridgeshire, were merged in 1965 and the Farm Census followed this change.

Parishes

There are two problems with how the Farm Census defined parishes.

The first was that the whole of each farm was assigned to a parish based on the location of the farmhouse, and as a single farm might comprise a large part of the total area of a parish this could clearly significantly distort the results. The first two maps in appendix 1, and the accompanying graphs, assess this problem for the parishes in our 1877 and 1931 samples. They compare the total area of all farmland in a parish, as reported by the Farm Census, with the total area of the parish as computed from the boundary polygons constructed by the Great Britain Historical GIS project from historical Ordnance Survey maps. Parishes could and did contain much land that was not farmed, so it is unsurprising that the ratio of farm area to parish area is generally less than one; the graphs place these parishes below the diagonal lines. Particularly low ratios are seen in the New Forest area of Hampshire, in parishes with large areas of coastal marsh and, in 1931, on the fringes of London.

All this is very much as expected as are the relatively small number of parishes with a ratio of farmland to total area above one. These are shown in pink or red on the maps, and above the diagonal line on the graphs. There is no obvious geographical clustering of these parishes. The graphs show that they are concentrated among the smaller parishes. Careful examination of the maps suggests that they were particularly likely to have neighbours with markedly low ratios, which is what we would expect if farmland was being disproportionately allocated by the “farmhouse” rule.

Final Report: Defining long-run agricultural trends

The second problem with the parish-level geography is harder to assess, but was apparent on the edges of London and also in a separate pair of listings of Warwickshire parishes supplied to us by Defra in 2002. This was that the Farm Census in 1931 continued to treat areas as parishes when they no longer existed as civil units. For example, the Civil Parish of King's Norton was abolished on the 1st of April 1912, according to table 6 of the 1921 Census of Population report for Warwickshire, but is still listed in the 1931 farm census forms in the National Archives. Slightly differently, Acocks Green was also listed in 1931 as a Warwickshire parish, but never existed as a Civil Parish, only as an Ecclesiastical Parish. Both these places were on the edge of Birmingham, and by 1931 both were within the very large Civil Parish of Birmingham, so this seems to be the case of the Farm Census trying to identify remaining farming areas on the urban fringe.

Neither of the two transcriptions of long series of the parish-level data that we have located, for Monmouthshire and for part of Sussex, covers such an urban fringe area, so we were unable to trace how problems like this evolved. However, it is clear that while our work on the 1877 and 1931 parish-level data succeeded in mapping the vast majority of the data, there were enough differences between how the Ministry of Local Government and its predecessors defined parishes and how the Ministry of Agriculture did to make perfect mapping of the data impossible. The Acocks Green example could only be fully resolved if some new set of maps could be located. However, given that the "parishes" are in fact aggregates of whole farms, the appropriate boundary maps are not really parish maps at all, but maps showing the boundaries of individual farms. These do in fact exist for 1941, having been compiled for the more detailed National Farm Survey of that year, and are held in National Archives Class MAF 73.

What the Farm Census Recorded: Concordance of Variables

Our detailed concordance of variables reported by the Farm Census between 1866 and 1970 is presented in appendix 3, so this section contains just some brief introductory comments. Note that the almost constant changing of the precise questions asked in the forms sent to farmers means that even now we cannot be sure we have identified all variations.

Firstly, note that all data about crops and land holdings were recorded in acres until 1976, from when hectares were used instead. All other measures are obvious: numbers of individual animals, of holdings, of farm workers.

Secondly, there was a general tendency for questions to become more complex over time, and therefore for the form to get longer. The addition of new crops to the listing obviously partly reflected changes in demand, so processed or canned vegetable questions begin in 1951 and mushrooms were first mentioned in 1961. Other changes, like division of "Potatoes" into "first earlies" and "main crop and second earlies" from 1940 onwards, seem to simply reflect a desire for greater detail.

Thirdly, some detailed changes are hard to follow. For example, in 1920 "Cabbage", "Kohl-Rabi" and "Rape" were separate categories. In 1930 they were merged into "Cabbage for fodder, Kohl Rabi, and Rape". In 1940, the main category was "Cabbage, Kale, Savoys, and Kohl Rabi, for fodder" but "Rape (or Cole)" was separate. 1950 was essentially identical, but in 1960 the main category was "Cabbage, savoys, & kohl rabi for stockfeeding", "Rape" was still separate and "Kale for stockfeeding" was added.

Final Report: Defining long-run agricultural trends

1970 is the same except that Rape is now divided into “Rape for stockfeeding” and “Rape grown for oilseed”.

Fourthly, while our primary assessment was the accessible data in the reports, we also examined a sample of the forms sent to farmer, as supplied to us by Defra. Looking at questions on animals, information on cattle was continuously recorded between 1866 and 1971, divided between cows and cattle over and under 2 years of age. Sheep over and under 1 year of age were also continuously recorded and it was only in later years that either category was divided significantly, into male and female animals. Pigs were similarly initially recorded just as a total and only later sub-divided into smaller sub-categories. Basic questions stay the same over long periods, such as “Barren sows for fattening” (1941-2006) and “Ewes kept for breeding” (1900-2006). There was also some introduction of new livestock categories, for example wild boar and deer.

Occasionally supplementary schedules were sent out with the normal schedules to gain greater detail. In 1931 the supplementary questions related to milk products, births and deaths of stock and motive power whilst in 1939 there was a supplementary schedule on motive power, changes of occupancy and births and deaths of livestock. In 1941 supplementary questions related to labour, rent, occupancy and motive power, but in 1929, 1930, 1932-1933, 1940, 1942-1943 there were no supplementary schedules.

While most of the categories used would have been quite clear to the farmers who received the forms, there is clearly a problem with the categorisation of grassland. For details see the concordance, but the three basic categories are rough grazing, permanent pasture and rotation grasses. A departmental minute discussing the 1941 Farm Survey commented on the problem of distinguishing "permanent grass" from "rough grazing": "We have never been able to get a satisfactory dividing line and our definition has not in practice amounted to much more than saying that rough grazings are grazings that are not smooth" (Minute of 28/7/1941, in MAF 38/211). The distinction between permanent and rotation grassland would have been generally clearer, but in the inter-war period arable farming was in rapid decline, and a farmer might well have viewed a particular field as being “rotation grass” when in fact it was going to remain as grass for some years to come.

To try to make some sense of all these changes, we have developed a series of simplified classifications which can be applied over long periods. In doing this, we have had to ignore some variations in labelling, and even then can identify only twelve consistent crop categories plus a catch-all “other” category. These generalised categories provide the basic organisation for the concordance of variables, and summary crop statistics using them are presented over 1869 to 1970 in appendix 4.

Our brief was to report on what information was gathered and how it changed, not to report on English agriculture and how that changed. However, the data do very clearly trace the decline of arable farming from the 1870s, when the impact of the repeal of the Corn Laws was beginning to be seen, to the 1930s, after which wartime policies and later subsidies very visibly reverse the decline.

The parish-level data enable much more detailed patterns to be explored. We include within appendix 1 just a few examples of what can be done, all based on the more extensive 1877 data. Figure 3 shows simply the distribution of cabbage growing in 1877, but figure 4 plots this against a background of population density from the Census of

Population, showing this crop was generally grown closer to markets. Figure 5 show bean production, showing a detailed relationship with soil types. Figure 6 relates wheat production and dairy farming, showing that the two types of farming were concentrated in quite different areas.

Accessing Farm Census Data in *Vision of Britain*

This report is only one of the results from the project. A second result is the large compilation of county-level data from 1866 to 1970, which is being deposited with both Defra and the UK Data Archive.

The third and in some ways largest output is the material we have added to the GB Historical GIS, and to the web site *A Vision of Britain through Time* which provides online access to the GBH GIS. The concordance included here in appendix 3 is a simplified and less formal version of the formal variable, category and nCube (data matrix) definitions we have added to the computer system, and we are using this formal metadata to structure the county level statistics we have also added, and to enable the system to map and graph these data.

What follows is a short explanation of how to access this information. What is described here is the current version of *Vision of Britain*, but note that a new version of the system will be launched in summer 2009. We try to indicate how the new system will differ.

Accessing the web site

The main home page of *A Vision of Britain through Time* can be accessed at:

<http://www.visionofbritain.org.uk>

It is in fact hosted by the University of Edinburgh while the new site will be hosted by the University of Portsmouth, but this URL will not change and many detailed pages within the site will retain the same address.

Accessing formal metadata

This forms part of the Data Documentation System (DDS). To reach this from the main home page, click on “Expert Search” in the top level menu, then select the fourth main option, “Data Documentation”. This procedure is likely to change in the new site, but you will still be able to directly access the Data Documentation System at:

<http://www.visionofbritain.org.uk/data>

Once into the DDS, there are many ways to browse around it, but the simplest is to click on “Themes”, and then on “T_LAND Agriculture and Land Use”. Information within this is organised into “Rates”, which are what the system maps, “Variables” and “nCubes”; but the more important of these are organised into “Rate Groups”, “Variable Groups” and “nCube Groups”. nCubes are multi-dimensional structures which can combine several variables, but most data structures derived from the Farm Census have just one dimension and are most easily explored via “Variables” and their groups.

Therefore, for example, scroll down to “Variable Groups” and click on “VG_ANIMALS”. This consists mainly of further variable groups for particular types of

Final Report: Defining long-run agricultural trends

animal, so click on “VG_SHEEP”. This in turn holds seven variables, five used at different dates for England and Wales, one that was only used in Scotland, and a more generalised one we have constructed. Selecting “V_AGCEN_SHEEP_1960” finally takes you to a listing of the categories of sheep used in the 1960 and subsequent censuses:

Variable: Agricultural Census Sheep Categories for 1960-70

Your location: [Home](#) > [Expert search](#) > [Data Documentation](#) > [V_AGCEN_SHEEP_1960](#)

Name:	Agricultural Census Sheep Categories for 1960-70
Identifier:	V_AGCEN_SHEEP_1960
Type:	Variable (V)
Text:	These categories were used in the Agricultural Census reports between 1960 and 1970. Different systems were used in 1950, and intervening years have not been checked.

Variable "V_AGCEN_SHEEP_1960" is contained within:

nCubes:

Entity ID	Entity Name
N_AGCEN_SHEEP_1960	Types of sheep as reported by the Agricultural Census.

Variable Groups:

Entity ID	Entity Name
VG_SHEEP	Sheep

Variables:

Entity ID	Entity Name
V_AGCEN_SHEEP_GEN	Agricultural Census Generalised Sheep Categories

Variable "V_AGCEN_SHEEP_1960" contains:

Categories :

Entity ID	Entity Name
C_AGCEN_SHEEP_1960_1	One year and over: Ewes kept for breeding
C_AGCEN_SHEEP_1960_2	One year and over: Two tooth (shearling) ewes to be put to the ram
C_AGCEN_SHEEP_1960_3	One year and over: Rams kept for service
C_AGCEN_SHEEP_1960_4	One year and over: Draft and cast ewes
C_AGCEN_SHEEP_1960_5	One year and over: Wethers and others
C_AGCEN_SHEEP_1960_6	Under one year

The top part of this display provides information about the variable itself. The middle section tells you about its relationship with other high-level entities: it is part of the variable group VG_SHEEP; it has been mapped to another variable, V_AGCEN_SHEEP_GEN; and it is used in the nCube N_AGCEN_SHEEP_GEN. The bottom part of the display lists the categories within the variable. Although most categories are self-explanatory, clicking on the individual categories provides access to additional information and in this case we have added definitions of “shearlings” and “wethers”: the latter are, for example, “a castrated male sheep’ (Source: English Nature, *The upland management handbook*, 'Glossary' (2001). A glossary on the BBC web site defines wethers more precisely as 'male sheep castrated at an early age before secondary sexual characters have developed.’ The category definition also shows that this category has been mapped to the category “C_AGCEN_SHEEP_GEN_3” in the generalised variable, and clicking on that link provides a list of all the categories from different dates which have been mapped to that general category.

Final Report: Defining long-run agricultural trends

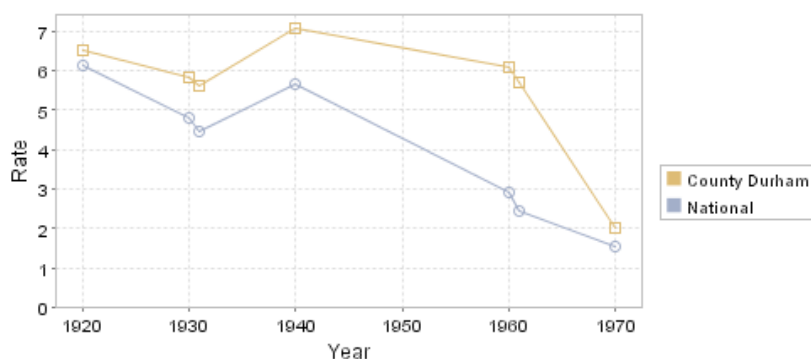
In other words, the DDS contains all the information presented in appendix 3, but in a more flexible way. It also includes information on some other variables/categories that appear just once or twice, and as just illustrated some additional annotation.

Accessing county statistics

Type the name of the county you are interested in into the main home page of the site. The system should know about most alternative spellings, so for example either “County Durham” or “Durham” will work although the latter then needs you to say you want the county, not the city.

This will take you to a “place page” for the county, which covers all the different kinds of county. If you scroll down the page you come to a table listing all the formally defined administrative units associated with the “place”, which for Farm Census data means that both Ancient and Administrative Counties may be listed. The columns in this table identify different statistical themes, and you will want “Land Use”. Click on the Ancient County for data up to 1910, and on the Administrative County for later dates. (The “place pages” are being reorganised in the new site, and the table giving access to statistical data will be on a separate page you reach from the “place page”).

If you select the “Land Use” theme for Durham Administrative County, you are then taken to a “theme page”. The top of this lists the available rates, and selecting any of these takes you to a graph comparing the county with national rates, such as this graph of the acreage of oats as a percentage of total area:

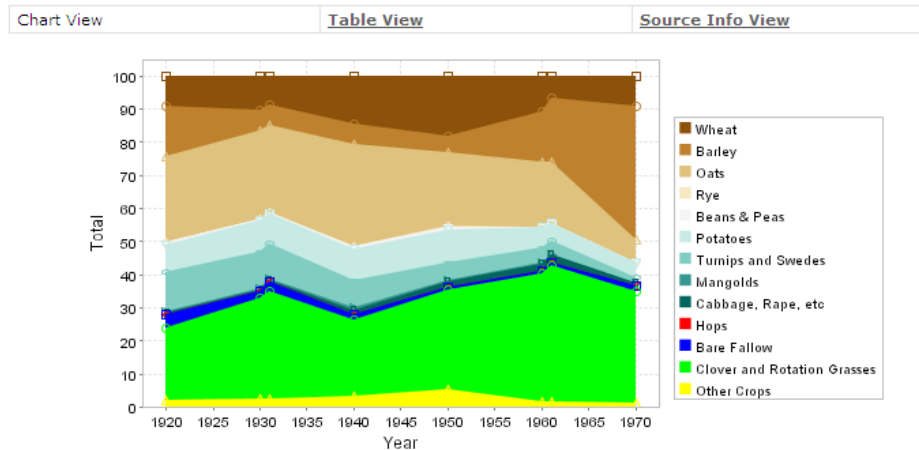


Clicking on a date in the bar above the graph takes you to the mapping, as explained below.

Returning to the theme page for the county, scrolling down the page takes you past some text introducing the theme to a list of nCubes, which actually hold the detailed data. The present interface was not designed to hold as many options as we now have for the farm census, but the most interesting are those based on the generalised variables, which therefore cover a range of dates. For example, the nCube N_AGCEN_CROP_GEN holds the generalised crop classification as shown above. The interface is tabbed, and the middle tab provides a listing of the numbers behind the graph, and the right tab provides information about sources.

You will note that you can access the DDS from the county graphs, to see the formal definitions.

Final Report: Defining long-run agricultural trends



nCube definition

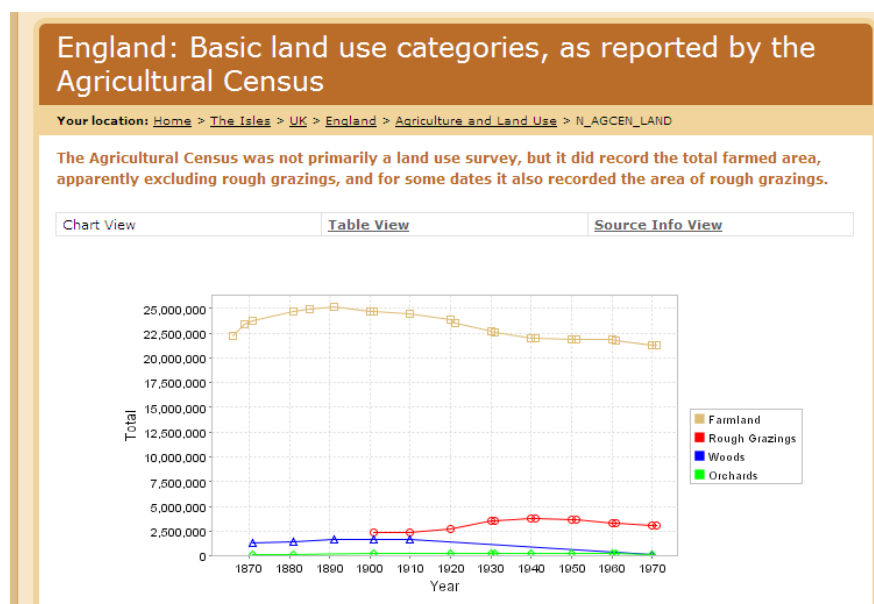
Because *Vision of Britain* distinguishes very formally between Ancient Counties and Administrative Counties, it does not allow you to see a single graph covering the full run of Farm Censuses. This limitation is one reason why this report includes listings of county data which cover the full period, but please note that ignoring the difference between the two types of county is problematic.

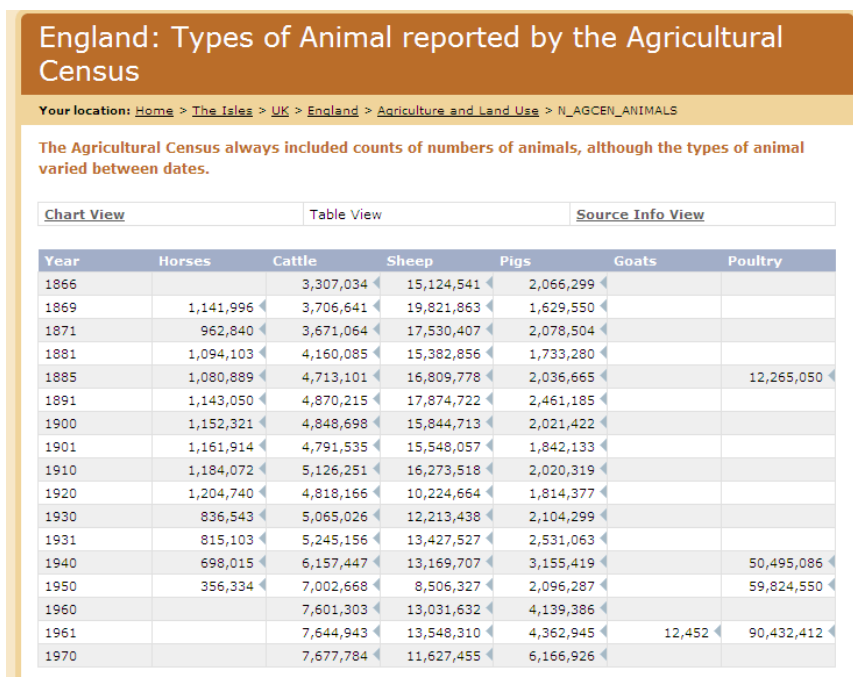
Accessing national totals

One defect of the current interface is that although the system holds national totals, there are no “place pages” for England, for England and Wales, and so on, so they are difficult to find. One of the options in “Expert Search” is a search interface for finding *any* administrative unit in the system, but a simpler route for now is to use the “crumb trails” that appear on pages for a particular county:

[Home](#) > [The Isles](#) > [UK](#) > [England](#) > [County Durham](#)

Clicking on “England” will take you to a home page for England, and scrolling down will take you to an “Agriculture and Land Use” theme which works just like the county ones.





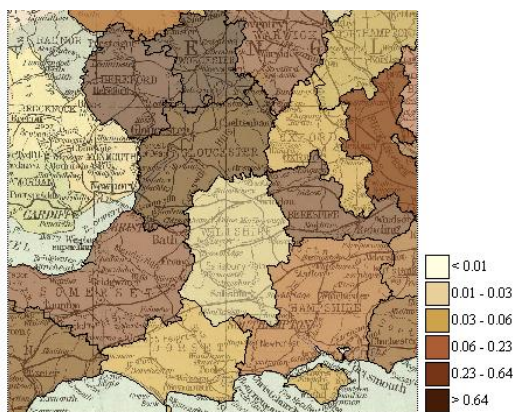
Accessing statistical mapping

In the current site, statistical mapping is accessed via the “National Overview” link on the home page, although in the new site there will be a “Statistical Atlas” option in the top-level menu bar that appears on all pages.

In either case, the link will take you to a page listing all available statistical themes, so scroll down and select “Agriculture and Land Use”. That takes you to a page which lists available rates.

Selecting a particular rate produces a map showing that rate for the counties of England (and Wales, if the data are available). The timeline bar above the map allows you to re-draw the map for a different date. You click on the map to change what you see, the effect a click has being determined by the options: zoom in, zoom out and pan around. This is all a bit slow in the current site as the page has to be completely redrawn each time you use any of these options. The new site will work much more like Google Maps.

One other option is to underlay an image of a historic maps, with towns and transport routes, behind your statistical map. This is shown here with a map of orchards in 1961:



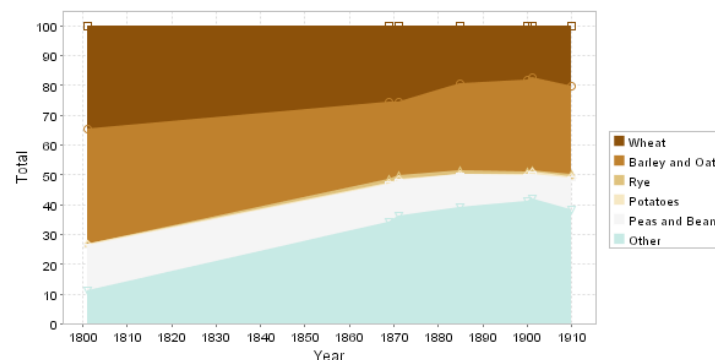
Final Report: Defining long-run agricultural trends

Statistical mapping within *Vision of Britain* is currently limited to the defined set of rates, and this will not change in the initial version of the new site. However, we hope to add an ability to map any component of an nCube relative to the overall total of the nCube. This will enormously increase the number of maps which can be created; for example, “shearling ewes” in the 1960 classification as a percentage of all sheep, or Hops as a percentage of all crops.

Other information about changing farming in *Vision of Britain*

The Farm Census is not the only source of information about farming in *A Vision of Britain through Time*:

- The earliest information in the system is a collection of articles written by Arthur Young (1741-1820), a tireless propagandist for new agricultural methods and the first Secretary to the Board of Agriculture. These describe agricultural practices village by village as he toured England. Youngs’ tour can be accessed via the “Travellers’ Tales” top level menu option (in the new site this will be under “Travel Writing”).
- The system holds statistical data from the 1801 Crop Returns, as researched by Michael Turner of Hull University. They cover a more restricted set of crops than the Farm Census and provide no information on animal husbandry, but we have designed another generalised variable that spans the 1801 Returns and the Farm Census, so you can see trends for Ancient Counties from 1801 onwards. This graph shows these very simplified crop categories for Suffolk, although the low level of “Other Crops” in 1801 may be partly due to the exclusion of fallow and rotation grassland:



- Lastly, *Vision of Britain* holds a full set of the maps from the 1930s Land Utilisation Survey of Great Britain. These can be accessed via the “Historical Maps” top level menu option.

Conclusion

This was a small scale project which had to concentrate on assembling and documenting what already existed. Given that the Farm Census has been taken annually since 1866, it is surprising it is not better known as a statistical source, but this is partly due to the almost constant changes to the information gathered, making comparisons over time difficult, and to the sporadic way in which the data have been computerised. One consequence of the latter we could not overcome: almost every researcher who has computerised data from the Farm Census seems to have followed a different selection strategy.

Final Report: Defining long-run agricultural trends

We very much hope that by assembling as much information as possible about the Farm Census in a single report, plus associated computer system, our work will make possible more systematic future analyses. The datasets assembled by this study will be deposited with the UK Data Archive as well as provided to Defra. We have not simply assembled existing transcriptions of county-level data, we have done a great deal of checking and enhancement.

We believe we made the right decision in concentrating our work on the parish-level data on the two geographically extensive transcriptions for 1877 and 1931. The maps in appendix 1 give a flavour of what is now possible, and we hope this work can be continued. We also suggest that further work to extend the 1931 transcription to additional counties would be particularly valuable, as it would facilitate comparison with the Land Utilisation Survey of Great Britain, also carried out in the early 1930s.

Acknowledgments

Deepest thanks to John Chapman for advice on the construction of generalised categories; Decio Battaglia and Paul Carter for work on mapping the 1877 and 1931 parish-level data; to David Gatley and Robert Schwartz for providing copies of their transcriptions of the county-level data; and to the researchers who provided information about parish-level transcriptions.

Appendix 1: Figures

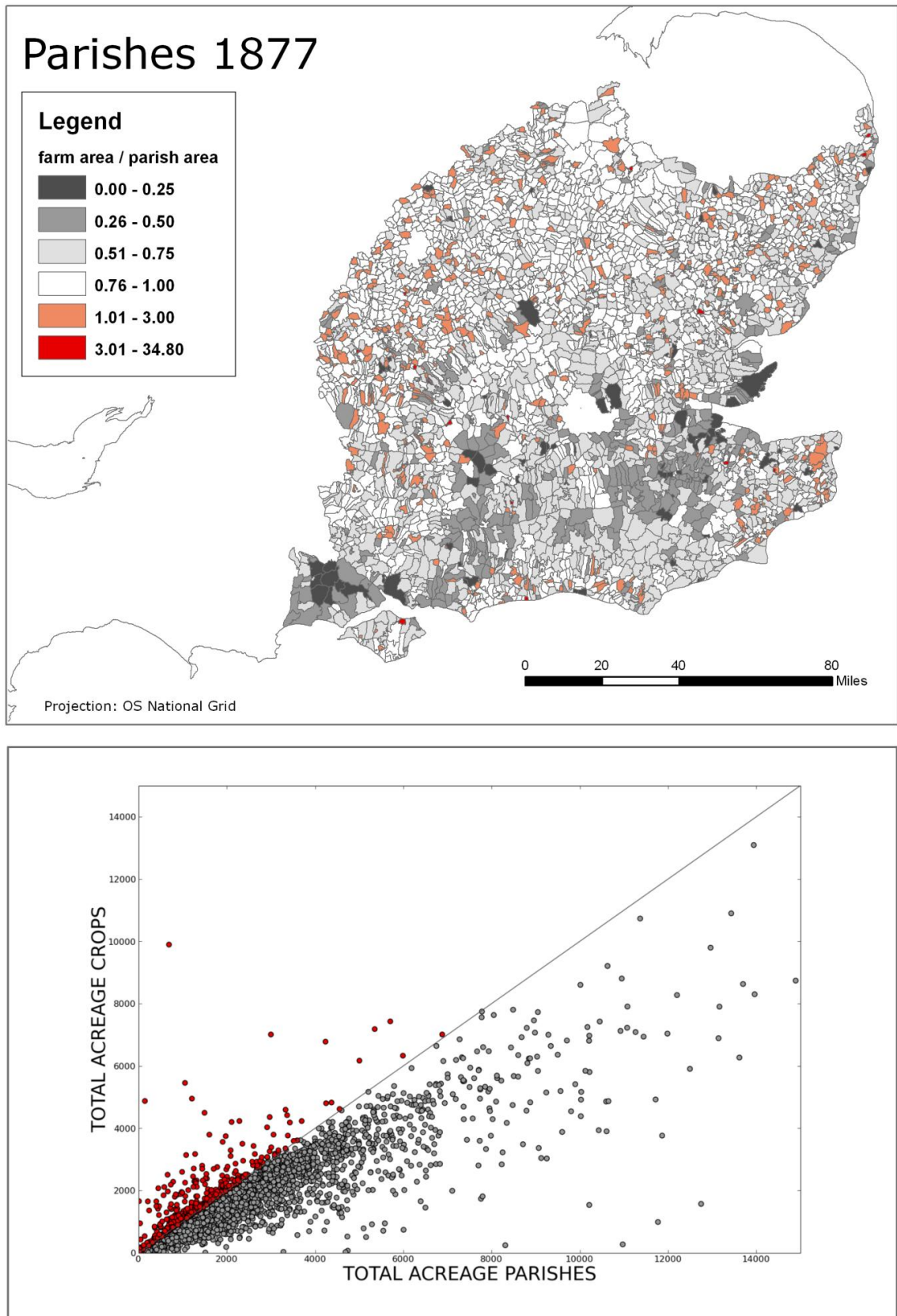


Figure 1: Relationship between reported total farmland and parish area, 1877

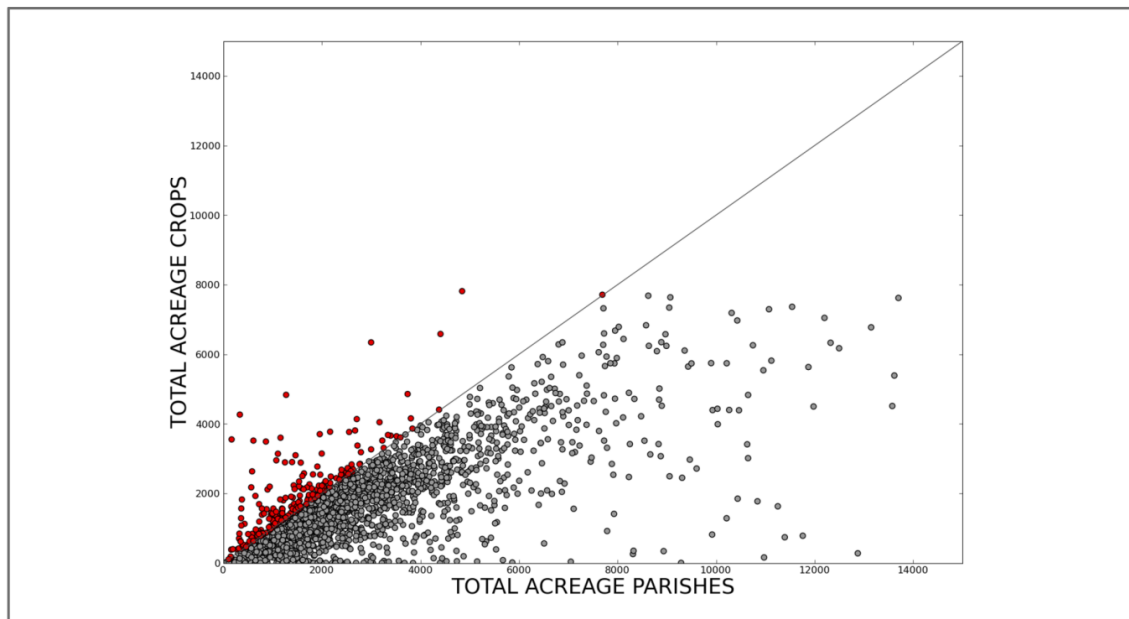
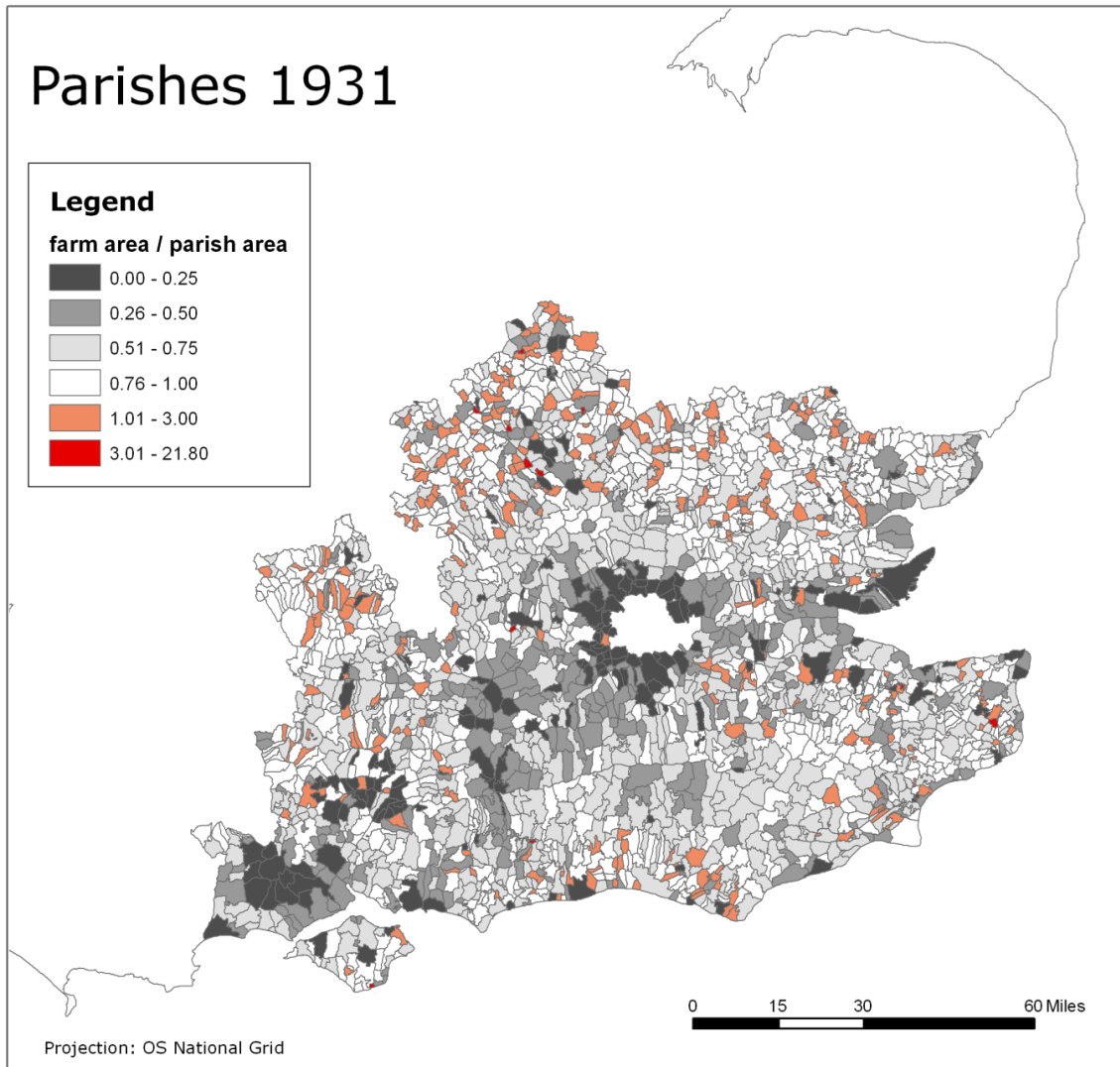


Figure 2: Relationship between reported total farmland and parish area, 1931

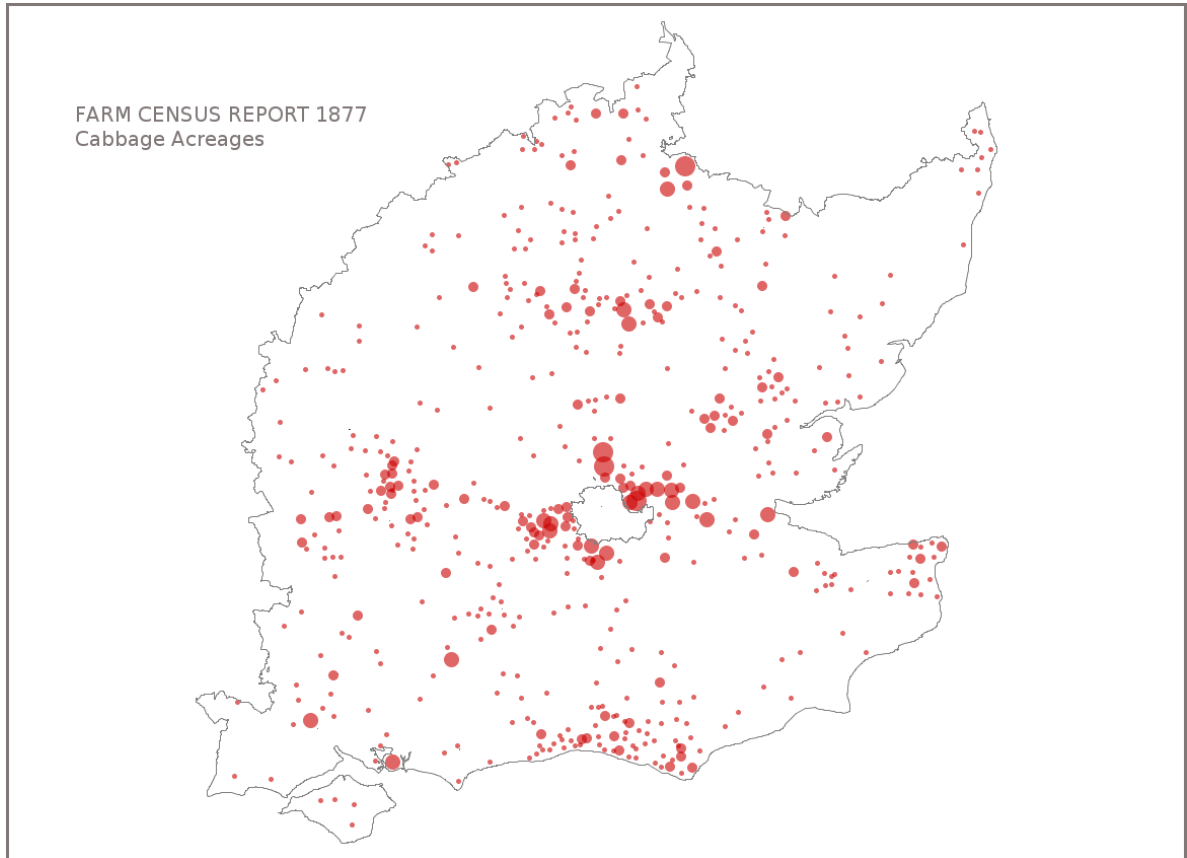


Figure 3: Acreages of cabbages in 1877

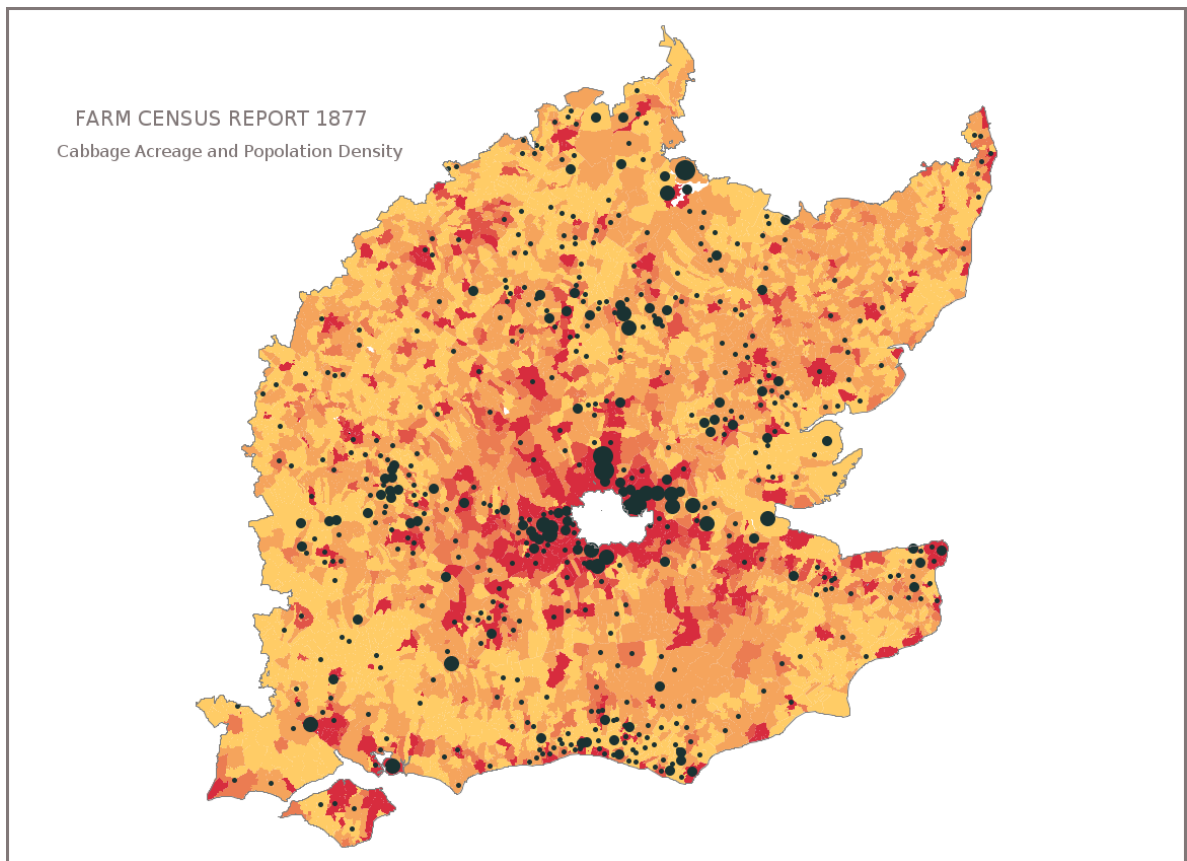


Figure 4: Acreages of cabbages in 1877 relative to population density

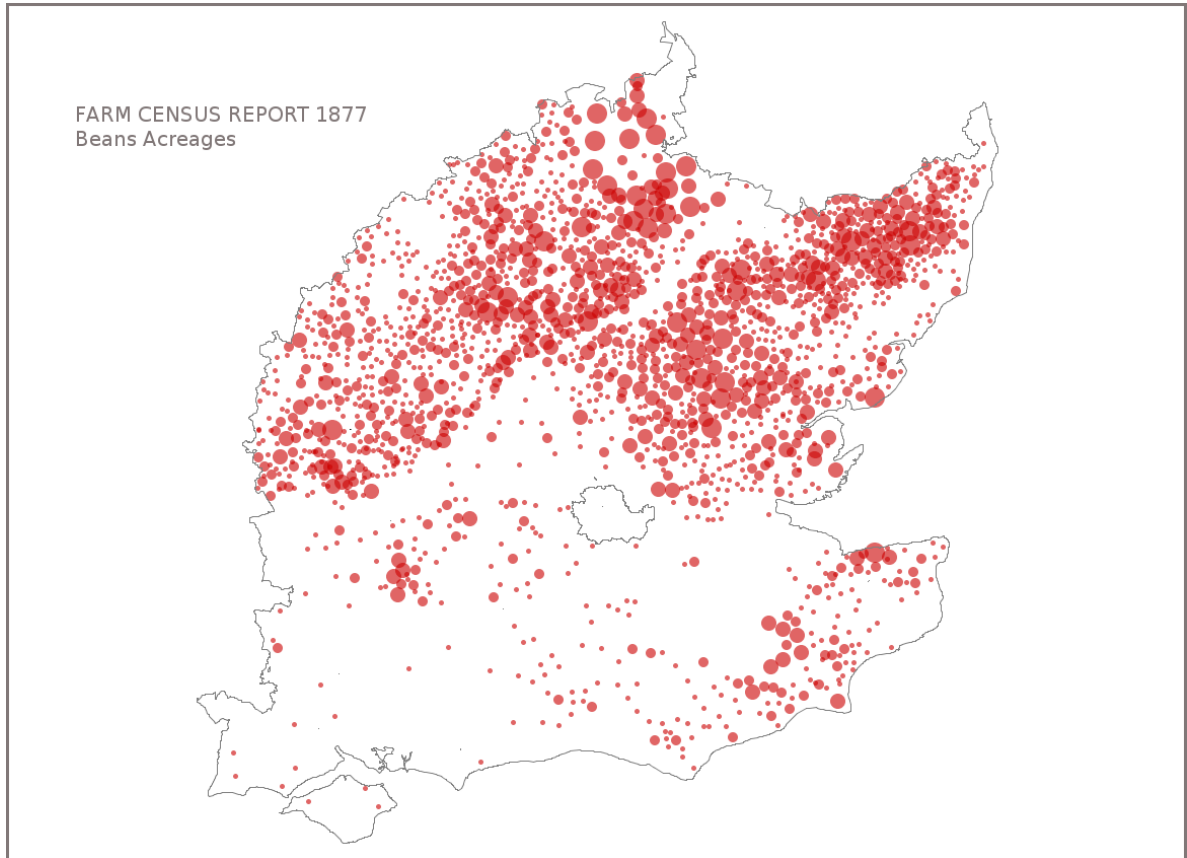


Figure 5: Acreages of beans in 1877

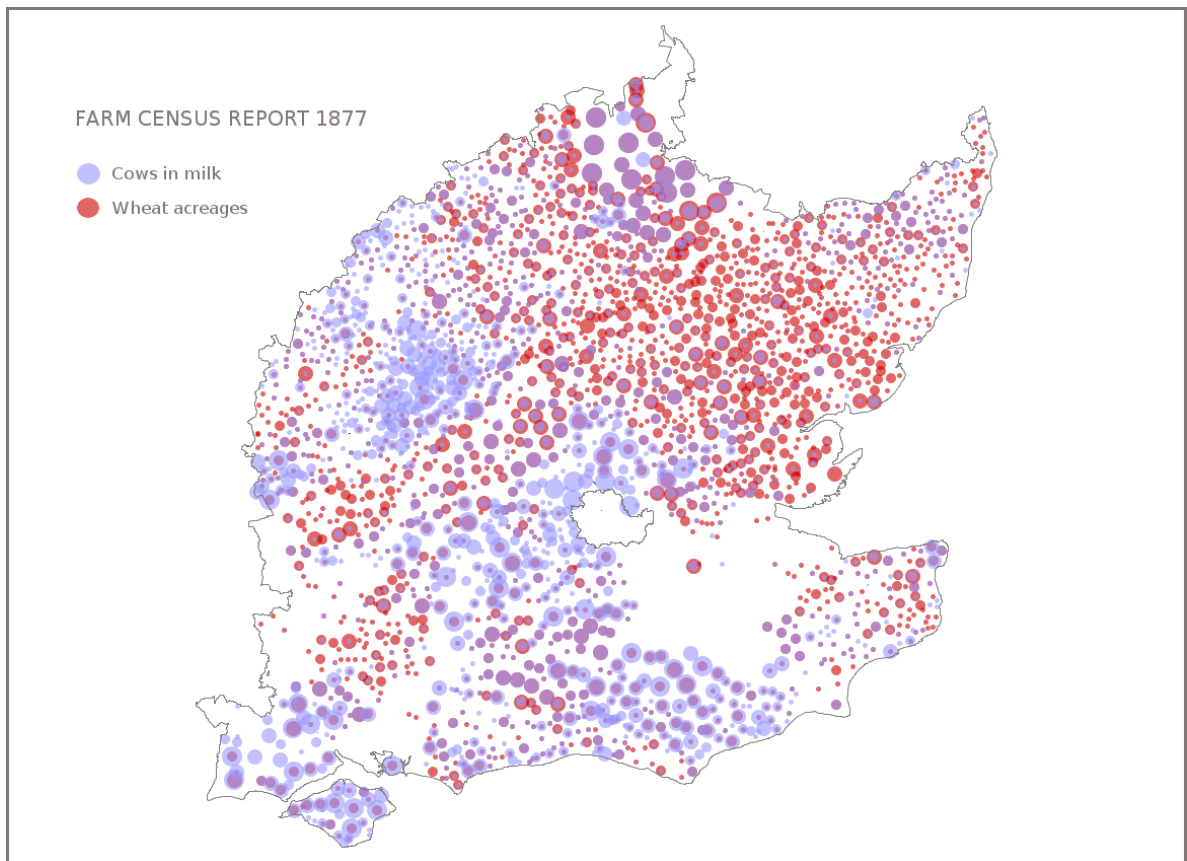


Figure 6: Dairy versus wheat farming in 1877

Appendix 2: Known Transcriptions of Farm Census Data

(a) County Level

Transcriber	Area	Dates	Format
Defra Farm Statistics	England (all counties)	Every tenth year from 1900 to 1980	Spreadsheets for individual county/year combinations
Welsh Assembly Government	Wales (all counties)	Every fifth year from 1867 to 1972.	County time series in an Excel workbook
David Gatley (University of Staffordshire)	England and Wales (all counties)	1871, 1901	Supplied as spreadsheets.
Robert Schwartz (Mount Holyoke College, Massachusetts)	England and Wales (all counties)	1869, 1885	Supplied as spreadsheets.
GB Historical GIS Project	England and Wales (all counties)	1877, 1891, 1931, 1961	Held in database, available as spreadsheet
GB Historical GIS Project	Scotland (all counties)	1870, 1871, 1877, 1884, 1885, 1901, 1931, 1961	Held in database, available as spreadsheet
GB Historical GIS Project	Ireland (all counties)	1871	Held in database, available as spreadsheet

NB the GBHGIS transcriptions listed above cover all the main tables, but our work included transcribing the national totals and/or certain primary totals for other years, and adding additional tables to years transcribed by Defra. Our work on Scotland and Ireland was funded by JISC, not Defra.

The Welsh Assembly transcriptions were not included in our collation of data as they were very differently organised. They form part of the Digest of Welsh Historical Statistics 1700-1974, which can currently be accessed at:

<http://wales.gov.uk/topics/statistics/publications/dwhs1700-1974/?lang=en>

(b) Parish Level

As the parish-level June Census data are available only as hand-completed forms in the National Archives, transcriptions are much more limited and have generally been

undertaken as academic research. This list does not include transcriptions limited to the 1941 National Farm Survey.

Transcriber	Area	Dates	Format
J.T. Coppock (formerly of Edinburgh University)	South-Eastern England (see maps in this report for details of areas covered).	1877 and 1931	Machine-readable data held by UK Data Archive (SN 3980)
Brian Short (University of Sussex)	High Weald: 71 parishes lying on the Hastings Beds formation, an area stretching approx from Slaugham and Worth in the west across to Hastings, Beckley and Tenterden in the east.	1866 to 1953: transcript of data for all years.	Hand-written transcription.
John Chapman (University of Portsmouth, retired)	Monmouthshire: Data for all parishes in county for years ending in one	1881-1961 (1871 data were defective). Also has transcriptions for all years for 21 selected parishes, although 6 were abolished in 1936.	Handwritten transcriptions
Martin Dallimer (University of Sheffield)	Peak District: 32 parishes	1930 and 1932	Spreadsheet. Transcription limited to grazing land, animals and holding size
Andrew Jackson (Bishop Grosseteste University College)	Powderham parish, Devon, fully transcribed but some data for adjacent parishes.	1870-1939 (?)	Details unclear.
Defra (data supplied in 2002)	Warwickshire	1891, 1931	Listings of all parish names only, no statistics.

Appendix 3: Concordance of variables and categories

This section of the report systematically lists the main categories used in successive reports of the Farm Census. As explained in the report, it is based on examining all volumes of *Agricultural Statistics* between 1920 and 1970, but we can be entirely confident that we have captured all the details of the classifications for years for which we had computerised data, as listed in appendix 3. Before 1920 we were not able to examine all reports so the information applies only to the years we have data for, although that period saw fewer changes.

The information presented here was extracted programmatically from the Data Documentation sub-system behind the *Vision of Britain* web site, and presenting the information in this way inevitably simplifies the ontology structure held there. Most basically, everything is presented in terms of the main generalised classifications we developed, but the ontology allows many mappings between categories and variables to exist simultaneously.

Another limitation of this presentation is that the focus is inevitably on the more complex groups of variables, like the main crop classification and the categorisations of cows. The farm census reports include various other classifications, for example of different types of crops produced in market gardens, but these appear less often and were harder to present here.

Overall Areas

This table is laid out differently from the remainder of the thesaurus and attempts to summarise the information provided by successive censuses on land other than that used for growing crops. We have not included derived totals, such as total pasture when “for hay” and “not for hay” are listed.

Note that the treatment of orchards is particularly problematic because the land below the trees was usually used as grazing or to grow other crops, but where orchards are identified at all it is usually possible to calculate a separate total of all orchards. Conversely, when an area of woodland is listed it is always quite distinct from the farmed area.

Year	Permanent Pasture	Rough Grazing	Woodland	Orchards and Market Gardens
1866	PERMANENT PASTURE, Meadow or Grass, <i>not broken up in Rotation</i> (exclusive of Hill Pastures)			
1871	Permanent Pasture, Meadow, or Grass, not broken up in Rotation (exclusive of Heath or Mountain Land): For Hay Permanent Pasture, Meadow, or Grass, not broken up in Rotation (exclusive of Heath or Mountain Land): Not for Hay		WOODS, Coppices, or Plantations (excepting Gorse Land and Garden Shrubberies)	ORCHARDS: Arable or Grass Land, included in other Columns, but used also for Fruit Trees of any kind
1877	PERMANENT PASTURE OR GRASS NOT BROKEN UP (exclusive of Heath or Mountain Land): For hay PERMANENT PASTURE OR GRASS NOT BROKEN UP (exclusive of Heath or Mountain Land): Not for Hay		WOODS: Coppices or Plantations, excepting Gorse Land and Garden Shrubberies	ORCHARDS, &c.: Acreage of Arable or Grass Lands, but also used for Fruit Trees of any kind MARKET GARDENS: Land Used by Market Gardeners for growth of Vegetables and other Garden Produce NURSERY GROUNDS: Land used by Nurserymen for growing Trees, Shrubs, &c.

Year	Permanent Pasture	Rough Grazing	Woodland	Orchards and Market Gardens
1891	PERMANENT PASTURE, or GRASS <i>Not broken up in Rotation</i> : For Hay PERMANENT PASTURE, or GRASS <i>Not broken up in Rotation</i> : Not for Hay		WOODS (except PLANTATIONS): Rented WOODS (except PLANTATIONS): Owned PLANTATIONS (Planted during the last 10 Years): Rented PLANTATIONS (Planted during the last 10 Years): Owned	NURSERY GROUNDS: Land used by Nurserymen for growing Trees, Shrubs, &c. ORCHARDS, &c.: Acreage of Arable or Grass Lands, but also used for Fruit Trees of any kind ACREAGE under MARKET GARDENS
1901	PERMANENT PASTURE, or GRASS <i>Not broken up in Rotation</i> : For Hay PERMANENT PASTURE, or GRASS <i>Not broken up in Rotation</i> : Not for Hay	MOUNTAIN AND HEATH LAND used for grazing	WOODS AND PLANTATIONS (1895)	Orchards (in table 4)
1910	PERMANENT GRASS	Mountain and Heath Land used for grazing	Woods and Plantations (1905)	
1920	PERMANENT GRASS	MOUNTAIN AND HEATH LAND		Total Orchards (in table 9)
1930	PERMANENT GRASS FOR HAY PERMANENT GRASS NOT FOR HAY	ROUGH GRAZINGS		Small Fruit Orchards Acreage of Small Fruit in Orchards [needed to avoid double counting]
1940	Clover and Rotation Grasses for Hay Clover and Rotation Grasses for grazing	Rough Grazings – Sole Rights Rough Grazings – Common		Orchards with crops, fallow or grass below the trees Orchards with small fruit below the trees Small fruit not under orchard trees
1950 and 1960	Permanent grass: for mowing Permanent grass: for grazing	Rough grazings: Sole rights Rough grazings: Common [a footnote says: “Based on separate estimates made by local officers”]		Orchards with crops, fallow or grass below the trees Orchards with small fruit below the trees Small fruit not under orchard trees
1970	Permanent grass: for mowing Permanent grass: for grazing	Rough grazings: Sole rights Rough grazings: Common	Woodlands ancillary to farming Other land used for agriculture	Orchards grown commercially Orchards not grown commercially

Crops

This variable group brings together the various classifications of types of crop that appear in our data, notably the different classifications used over the years by the Agricultural Census.

General Category	1866	1869	1871	1881	1891	1910	1920	1922	1940	1950	1957	1961	1970
Wheat	Wheat	Wheat	Wheat	Wheat	Wheat	Wheat	Wheat: Autumn Sown Wheat: Spring Sown	Wheat	Wheat	Wheat	Wheat	Wheat	Wheat
Barley	Barley or Bere	Barley or Bere	Barley or Bere	Barley or Bere	Barley or Bere	Barley or Bere	Barley or Bere	Barley	Barley	Barley	Barley	Barley	Barley
Oats	Oats	Oats	Oats	Oats	Oats	Oats	Oats	Oats	Oats	Oats	Oats	Oats	Oats
Rye	Rye	Rye	Rye	Rye	Rye	Rye	Rye	Rye	Rye	Rye for threshing Rye for green fodder	Rye for threshing	Rye for threshing	Rye for threshing
Beans & Peas	Beans Peas	Beans Peas	Beans Peas	Beans Peas	Beans Peas	Beans Peas	Beans Peas	Beans Peas	Beans for stockfeeding Peas for stockfeeding	Beans for stockfeeding Peas for stockfeeding	Beans for stockfeeding Peas for stockfeeding	Beans and peas for stockfeeding	Beans for stockfeeding
Potatoes	Potatoes	Potatoes	Potatoes	Potatoes	Potatoes	Potatoes	Potatoes	Potatoes	Potatoes, first earlies Potatoes, main crop and second earlies	Potatoes, main crop and second earlies Potatoes, first earlies	Potatoes, first earlies Potatoes, main crop and second earlies	Potatoes, first earlies Potatoes, main crop and second earlies	Potatoes, first earlies Potatoes, main crop and second earlies

General Category	1866	1869	1871	1881	1891	1910	1920	1922	1940	1950	1957	1961	1970
Turnips and Swedes	Turnips and Swedes	Turnips and Swedes	Turnips and Swedes	Turnips and Swedes	Turnips and Swedes	Turnips and Swedes	Turnips and Swedes	Turnips and Swedes	Turnips and Swedes for stockfeeding	Turnips and Swedes for stockfeeding	Turnips, swedes & fodder beet for stockfeeding	Turnips, swedes & fodder beet for stockfeeding	Turnips, swedes and fodder beet for stockfeeding
Mangolds	Mangold	Mangold	Mangold	Mangold	Mangold	Mangold	Mangold	Mangold	Mangolds	Mangolds	Mangolds	Mangolds	Mangolds
Cabbage, Rape, etc	Cabbage, Kohl Rabi, and Rape	Cabbage, Kohl Rabi, and Rape	Cabbage, Kohl Rabi, and Rape	Cabbage, Kohl Rabi, and Rape	Cabbage, K-Rabi, & Rape	Cabbage Kohl-Rabi Rape	Cabbage Kohl-Rabi Rape	Cabbage for fodder, Kohl Rabi, and Rape	Rape (or Cole) Cabbage, Kale, Savoys, and Kohl Rabi, for fodder	Rape Cabbage, kale, savoys, and kohl rabi for fodder	Rape Kale for stockfeeding Cabbage, savoys, & kohl rabi for stockfeeding	Rape Kale for stockfeeding Cabbage, savoys, & kohl rabi for stockfeeding	Rape for stockfeeding Kale for stockfeeding Cabbage, savoys, & kohl rabi for stockfeeding Rape grown for oilseed
Hops	Hops	Hops	Hops	Hops	Hops	Hops	Hops	Hops	Hops	Hops	Hops	Hops	Hops
Bare Fallow	Bare Fallow	Bare Fallow	Bare Fallow	Bare Fallow	Bare Fallow	Bare Fallow	Bare Fallow	Bare Fallow	Bare Fallow	Bare Fallow	Bare Fallow	Bare Fallow	Bare Fallow
Clover and Rotation Grasses	Clover, Sainfoin, and Grasses under Rotation	Clover, Sainfoin, and Grasses under Rotation	Clover, Sainfoin, and Grasses under Rotation: For Hay Clover, Sainfoin, and Grasses under Rotation: Not for Hay	Clover, Sainfoin, and Grasses under Rotation	CLOVER, SAINFOIN and GRASSES: For Hay CLOVER, SAINFOIN and GRASSES: Not for Hay	Clover, Sainfoin, and Grasses under Rotation	Clover, Sainfoin, and Grasses under Rotation	Clover, Sainfoin, and Rotation Grasses: for Hay Clover, Sainfoin, and Rotation Grasses: not for Hay	Clover and Rotation Grasses for Hay Clover and Rotation Grasses for grazing	Clover and Rotation Grasses: For mowing Clover and Rotation Grasses: For grazing	Clover and Rotation Grasses: For mowing Clover and Rotation Grasses: For grazing	Clover and Rotation Grasses: For mowing Clover and Rotation Grasses: For grazing	Clover and Rotation Grasses: For mowing Clover and Rotation Grasses: For grazing

General Category	1866	1869	1871	1881	1891	1910	1920	1922	1940	1950	1957	1961	1970
<p>Other Crops</p> <p>This inevitably combines many crops which are listed for only part of the period covered by the reports, plus 'other crop' categories originally listed.</p>	Carrots Vetches, Lucerne and other Green Crops	Carrots Vetches, Lucerne and other Green Crops Flax	Carrots Vetches, Lucerne and other Green Crops Flax	Carrots Vetches, Lucerne and other Green Crops Flax	Vetches or Tares Other Green Crops Flax Small Fruit	Vetches or Tares Lucerne Small Fruit Other Crops	Vetches or Tares Lucerne Small Fruit Other Crops Mixed Corn	Sugar Beet Vetches or Tares Lucerne Orchards with Small Fruit underneath Orchards without Small Fruit Small Fruit, not in an orchard Other Crops Mixed Corn	Sugar Beet Vetches or Tares Lucerne Mustard for Seed Mustard for Fodder or Ploughing in Flax for Fibre or Linseed Orchards with crops, fallow or grass below the trees Other Crops Orchards with small fruit below the trees Small fruit not under orchard trees Vegetables (excluding potatoes) grown in the open	Sugar Beet Vetches or Tares Mustard for seed, for fodder or ploughing in Linseed Flax for Fibre Orchards with crops, fallow or grass below the trees Orchards with small fruit below the trees Small fruit not under orchard trees Vegetables (excluding potatoes) grown in the open Fruit and vegetables not grown primarily for sale Crops under glass Bulbs and flowers	Sugar Beet Vetches or Tares Mustard Orchards with crops, fallow or grass below the trees Orchards with small fruit below the trees Small fruit not under orchard trees Vegetables (excluding potatoes) grown in the open Fruit and vegetables not grown primarily for sale Crops under glass or in sheds	Mustard Other crops for stockfeeding Sugar Beet Orchards with crops, fallow or grass below the trees Orchards with small fruit below the trees Small fruit not under orchard trees Vegetables (excluding potatoes) grown in the open Crops under glass or in sheds	Mustard Other crops for stockfeeding Sugar Beet Orchards grown commercially Orchards not grown commercially Small fruit not under orchard trees Vegetables (excluding potatoes) grown in the open Crops under glass or in sheds Bulbs, flowers grown in the open, and hardy nursery stock All other crops Lucerne

General Category	1866	1869	1871	1881	1891	1910	1920	1922	1940	1950	1957	1961	1970
									Flowers grown in the open Crops under glass All Other Crops Mixed Corn	primarily for sale Crops under glass Flowers grown in the open All Other Crops Lucerne Mixed Corn	grown in the open, and nursery stock All other crops Lucerne Mixed Corn for threshing	Bulbs and flowers grown in the open and nursery stock All other crops Lucerne Mixed Corn for threshing	Mixed Corn for threshing Maize for threshing Other Maize

Horses

This variable group brings together the different classifications of horses used over the years by the Agricultural Census.

Generalised Category:	1870	1891	1900	1920	1940
Horses used for Agriculture.	Used solely for Agriculture	Used solely for Agriculture	Used solely for Agriculture including breeding Mares	Used for Agriculture	Horses used for agricultural purposes
Other Horses	Unbroken Horses, and mares kept solely for Breeding	Unbroken Horses Mares kept solely for breeding	Unbroken, one year and above Unbroken, under one year	Stallions used for service Unbroken, One year and above Unbroken, Under one year Other Horses	Unbroken horses one year and over Light horses under one year Heavy horses under one year Stallions for service Other Horses

Cattle

This variable group brings together the different classifications of cattle used over the years by the Agricultural Census.

Generalised Category:	1900	1910	1920	1940	1950	1960	1970
<p>Dairy Cows</p> <p>Dairy Cows: From 1960 onwards, the Farm Census specifically distinguished dairy and beef cows, but for all earlier dates all cows in milk or in calf, and all heifers in calf, are included in this category.</p>	Cows and Heifers in Milk or in Calf	Cows and Heifers in Milk Cows and Heifers in Calf but not in Milk	Cows and Heifers in Milk Cows in Calf but not in Milk Heifers in Calf	Cows and Heifers in Milk Cows in Calf but not in Milk Heifers in calf with first calf	Cows and Heifers in Milk Cows in Calf but not in Milk Heifers in calf with first calf	Dairy Cows and Heifers in Milk Dairy Cows in Calf but not in Milk Dairy Heifers in calf (first calf)	Dairy Cows and Heifers in Milk Dairy Cows in Calf but not in Milk Dairy Heifers in calf (first calf)
<p>Beef Cattle</p> <p>Beef Cattle: This category includes all bulls, whether in service or being reared for service; and all other cattle aged over one year, except for those in milk or in calf. From 1960 onwards, it also includes cows and heifers in milk or in calf which are identified as beef cattle.</p>	Other, 2 years and above Other, under 2 years	Other, 2 years and above Other, under 2 years	Bulls used for Service Other, 2 years and above Other, under 2 years	Bulls for Service Bulls (including Bull Calves) being reared for service Other Cattle: Two years and above: Male Other Cattle: Two years and above: Female Other Cattle: One year and under two: Male Other Cattle: One year and under two: Female	Bulls for Service Bulls (including Bull Calves) being reared for service Other Cattle: Two years and above: Male Other Cattle: Two years and above: Female Other Cattle: One year and under two: Male Other Cattle: One year and under two: Female	Beef Cows and Heifers in Milk Beef Cows in Calf but not in Milk Beef Heifers in calf (first calf) Bulls being used for service Bulls (including bull calves) being reared for service Other Cattle: Two years and over: Male Other Cattle: Two years and over: Female Other Cattle: One year and under	Beef Cows and Heifers in Milk Beef Cows in Calf but not in Milk Beef Heifers in calf (first calf) Bulls being used for service Bulls (including bull calves) being reared for service Other Cattle: Two years and over: Male Other Cattle: Two years and over: Female Other Cattle: One year and under two: Male

Generalised Category:	1900	1910	1920	1940	1950	1960	1970
						two: Male Other Cattle: One year and under two: Female	Other Cattle: One year and under two: Female
<p>Calves under 1</p> <p>Calves under one: It is never possible to distinguish calves reared for slaughter from calves intended to become milk producers, although from 1950 onwards it is possible to distinguish calves under one by sex.</p>	Other, under 1 year	Other, under 1 year	Other, under 1 year	Other Cattle: Under one year	Other Cattle: Under one year: Male Other Cattle: Under one year: Female	Other Cattle: Under one year: Male Other Cattle: Under one year: Female	Other Cattle: Six months old and under one year: Male Other Cattle: Six months old and under one year: Female Other Cattle: Under six months old: Male Other Cattle: Under six months old: Female

Sheep

This variable group brings together the different classifications of sheep used over the years by the Agricultural Census.

Generalised Category:	1900	1920	1940	1960
<p>Breeding Ewes</p> <p>Breeding ewes: From 1900 onwards, the Farm Census distinguishes breeding ewes from all other sheep aged over 1.</p>	Ewes kept for Breeding	Ewes kept for Breeding	Over one year: Ewes for breeding	One year and over: Ewes kept for breeding
<p>Lambs (Aged under 1)</p> <p>This is usually clearly defined, but in 1920 there is a category 'Rams and Ram Lambs to be used for service' which is included under our 'Other' category.</p>	Other, Under one year	Other, Under one year	Under one year: Ram lambs intended for service Under one year: Others	Under one year
<p>All Other Sheep</p> <p>All other sheep aged over 1, including rams, gimmers and yearlings.</p>	Other, One year and above	Rams and Ram Lambs to be used for service Other, One year and above	Over one year: Rams for service Over one year: Two-tooth (Shearling) Ewes Over one year: Others	One year and over: Two tooth (shearling) ewes to be put to the ram One year and over: Rams kept for service One year and over: Draft and cast ewes One year and over: Wethers and others

Pigs

This variable group brings together the different classifications of pigs used over the years by the Agricultural Census. In this case, even a three-way classification cannot be established until the 1940s.

Generalised Category:	1900	1920	1940	1950
Breeding Sows Breeding sows: The Farm Census from 1900 onwards distinguishes breeding sows.	Sows kept for Breeding	Sows kept for Breeding	Sows in pig Gilts in pig Other Sows for breeding	Sows in pig Gilts in pig Other Sows for breeding
Piglets (Aged under 5 months) Piglets. The Farm census separates out pigs aged under 2 months and those aged 2 to 5 months, but they are grouped together here.	Other Pigs	Boars being used for service Other Pigs	All other pigs: Two to five months All other pigs: Under two months	All other pigs: Two to five months All other pigs: Under two months
All Other Pigs All other pigs aged over 5 months, including boars and barren sows.			Barren Sows for fattening Boars for service All other pigs: Over five months	Barren Sows for fattening Boars for service Young boars being reared for service All other pigs: Over five months

Poultry

In all years that the Agricultural Census listed total numbers, they were broken down by species. The same four kinds of bird were listed in 1885 and 1961, although they were not listed between 1891 and 1920. In some years numbers of 'fowls' (i.e. chickens) were further disaggregated.

Generalised Category:	1885	1930	1940	1950	1960
Fowls	POULTRY: Fowls	Fowls	Fowls over six months Fowls under six months	Fowls: Six months and over Fowls: Under six months	Fowls: Six months and over Fowls: Under six months: For breeding or egg laying Fowls: Under six months: For broiler production Fowls: Under six months: For production of table poultry other than broilers
Ducks	POULTRY: Ducks	Ducks	Ducks	Other poultry: Ducks	Other poultry: Ducks
Geese	POULTRY: Geese	Geese	Geese	Other poultry: Geese	Other poultry: Geese
Turkeys	POULTRY: Turkeys	Turkeys	Turkeys	Other poultry: Turkeys	Other poultry: Turkeys

Farmworkers

This variable group brings together classifications of farmworkers used by the Agricultural Census.

Generalised Category:	1930	1940	1950	1960	1970
<p>Regular, Male</p> <p>Male Regular workers. This category includes full-time and part-time workers of all ages.</p>	<p>Regular, Male, 21 and over</p> <p>Regular, Male, Under 21</p>	<p>Regular, Male, 21 and over</p> <p>Regular, Male, 18 to 21</p> <p>Regular, Male, Under 18</p>	<p>Regular, Male, 65 and over</p> <p>Regular, Male, 21 to 65</p> <p>Regular, Male, 18 to 21</p> <p>Regular, Male, Under 18</p>	<p>Whole-time, Male, Over 20</p> <p>Whole-time, Male, 18 to 20</p> <p>Whole-time, Male, Under 18</p> <p>Part-time, Male, Over 20</p> <p>Part-time, Male, Under 20</p>	<p>Whole-time, Male</p> <p>Part-time, Male</p>
<p>Regular, Female</p> <p>Female Regular workers. This category includes full-time and part-time workers of all ages, including 'Womens' Land Army' members in the 1950s data.</p>	<p>Regular, Female</p>	<p>Regular, Female</p>	<p>Regular, Female</p> <p>Women's Land Army</p>	<p>Whole-time, Female</p> <p>Part-time, Female</p>	<p>Whole-time, Female</p> <p>Part-time, Female</p>
<p>Casual, Male</p> <p>Male Casual workers. Sometimes labelled 'seasonal' or 'temporary'.</p>	<p>Casual, Male, 21 and over</p> <p>Casual, Male, Under 21</p>	<p>Casual, Male, 21 and over</p> <p>Casual, Male, Under 21</p>	<p>Casual, Male, 21 and over</p> <p>Casual, Male, Under 21</p>	<p>Seasonal and temporary, Male, Over 20</p> <p>Seasonal and temporary, Male, Under 20</p>	<p>Seasonal or Casual: Male</p>
<p>Casual, Female</p> <p>Female Casual workers. Sometimes labelled 'seasonal' or 'temporary'.</p>	<p>Casual, Female</p>	<p>Casual, Female</p>	<p>Casual, Female</p>	<p>Seasonal and temporary, Female</p>	<p>Seasonal or Casual: Female</p>
<p>Farmers</p> <p>Farmers, full or part-time. This category is listed for 1970 only.</p>					<p>Farmers, etc., Whole-time</p> <p>Farmers, etc., Part-time</p>

Farm size

This variable group brings together classifications of farm size used by the Agricultural Census. Note that the 1891 census included information on tenure type, i.e. whether land was owned or rented, but not on holding size.

Generalised Category:	1910	1920	1950
Under 5 Acres	Above 1 and not exceeding 5 acres: Owned or mainly owned Above 1 and not exceeding 5 acres: Rented or mainly rented	Above 1 and not exceeding 5 acres	Under 5 acres.
5 to 50 Acres	Above 5 and not exceeding 50 acres: Owned or mainly owned Above 5 and not exceeding 50 acres: Rented or mainly rented	Above 5 and not exceeding 20 acres Above 20 and not exceeding 50 acres	5 acres and not exceeding 14¾ acres 15 acres and not exceeding 19¾ acres 20 acres and not exceeding 29¾ acres 30 acres and not exceeding 49¾ acres
50 to 300 Acres	Above 50 and not exceeding 300 acres: Owned or mainly owned Above 50 and not exceeding 300 acres: Rented or mainly rented	Above 50 and not exceeding 100 acres Above 100 and not exceeding 150 acres Above 150 and not exceeding 300 acres	50 acres and not exceeding 99¾ acres 100 acres and not exceeding 149¾ acres 150 acres and not exceeding 299¾ acres
Over 300 Acres	Above 300 acres: Owned or mainly owned Above 300 acres: Rented or mainly rented	Above 300 acres	300 acres and not exceeding 499¾ acres 500 acres and not exceeding 699¾ acres 700 acres and not exceeding 999¾ acres 1000 acres and over

Appendix 4: Generalised statistics for counties 1869-1970

The following pages list data derived from the Agricultural Census for the Counties of England. The data have been standardised over time in terms of both categories and, somewhat crudely, geography.

The generalised categories used here are those defined in the concordance, which inevitably means losing a substantial part of the detail in the classifications used in individual years, but enables clear identification of trends over time.

The counties used here are essentially the traditional or “Ancient” Counties of England, but providing single time series covering both the 19th and the 20th century means ignoring significant differences in how counties were defined, as discussed above. In several cases here, Administrative Counties had to be merged to approximate to the earlier units: obviously East and West Sussex to create Sussex, and the three Parts of Lincolnshire to create Lincolnshire. Somewhat less obviously, between 1920 and 1965 Cambridgeshire and the Isle of Ely have to be merged to create Cambridgeshire as it was defined both after 1965 and, approximately, up to 1910.

Bedfordshire

Year	Wheat	Barley	Oats	Rye	Beans and Peas	Potatoes	Turnips and Swedes	Mangolds	Cabbages, etc	Hops	Bare Fallow	Clover and Rotation Grass	Other Crops
1869	53,141	28,594	10,037	454	28,465	4,132	13,469	4,155	3,275	0	11,735	11,038	7,815
1871	53,582	29,311	9,374	528	27,467	5,819	11,687	4,488	6,913	0	7,525	15,868	9,316
1877	50,420	32,039	10,741	401	23,735	4,511	11,973	3,978	2,945	0	13,160	17,605	10,328
1885	43,315	27,796	12,196	297	17,422	8,026	12,626	3,855	1,372	0	13,250	22,795	9,404
1891	44,724	23,154	13,406	243	17,294	7,313	9,814	3,920	1,666	0	11,230	21,146	7,846
1900	37,149	19,473	18,779	207	12,435	8,907	6,534	4,166	2,746	0	7,954	26,471	9,731
1901	35,227	18,529	17,905	153	11,871	9,829	6,661	4,064	2,257	0	9,227	27,972	9,280
1910	40,009	11,627	20,560	109	13,281	8,139	5,056	4,530	2,450	0	12,174	19,215	9,983
1920	42,328	10,256	22,892	274	10,669	11,402	2,477	3,947	1,516	0	15,175	18,910	13,929
1930	30,584	7,967	19,083	157	10,625	9,421	1,205	2,517	898	0	7,951	16,358	20,397
1931	24,689	8,024	15,841	79	9,721	10,155	934	2,214	834	0	8,180	21,078	21,869
1940	34,631	9,965	18,723	64	2,070	11,598	797	1,841	1,602	0	12,356	12,808	24,439
1950	51,548	24,919	15,480	266	2,139	17,076	363	2,549	1,419	0	6,044	23,412	34,765
1960	39,231	53,222	8,420	41	1,119	12,879	191	754	1,737	0	5,240	19,440	30,726
1961	31,741	59,116	6,924	0	670	11,300	144	582	1,350	0	7,965	24,604	28,635
1970	40,543	79,169	5,375	10	4,577	9,133	47	107	846	0	4,407	13,646	26,312

Berkshire

Year	Wheat	Barley	Oats	Rye	Beans and Peas	Potatoes	Turnips and Swedes	Mangolds	Cabbages, etc	Hops	Bare Fallow	Clover and Rotation Grass	Other Crops
1869	64,829	38,485	26,272	655	22,136	1,125	40,231	4,323	2,731	38	8,045	33,039	10,736
1871	63,040	39,336	26,913	894	23,146	1,626	37,698	6,225	3,760	18	5,120	36,550	14,223
1877	58,396	37,598	28,978	1,013	20,883	1,185	33,679	5,822	2,889	15	8,782	41,559	13,752
1885	48,753	36,728	29,934	474	15,211	1,798	32,225	5,695	2,277	10	10,283	43,839	14,090
1891	44,752	32,548	30,215	567	12,296	2,211	27,827	5,822	2,531	11	7,490	42,707	11,801
1900	36,034	27,270	32,943	1,169	7,096	1,900	19,014	6,624	3,536	0	6,981	41,953	10,607
1901	35,235	27,422	31,788	1,186	6,747	1,830	19,111	6,292	2,997	0	7,894	42,601	10,448
1910	38,709	21,336	32,291	795	6,047	1,787	17,490	6,884	2,033	0	12,263	31,912	8,462
1920	38,676	22,417	36,281	1,820	4,056	2,102	11,243	5,773	2,385	0	19,824	28,840	8,452
1930	27,769	13,182	28,194	931	2,858	1,649	7,211	4,105	3,106	42	12,843	24,174	9,728
1931	25,169	13,140	25,002	545	2,693	1,814	6,023	3,771	2,619	38	12,935	29,763	8,538
1940	31,762	17,608	27,630	120	537	2,059	4,772	2,943	3,678	42	11,993	21,325	9,593
1950	43,187	36,944	23,688	554	1,173	5,055	2,224	3,300	6,405	45	12,720	54,885	27,073
1960	34,784	73,315	11,087	126	413	2,681	960	957	9,304	42	6,322	68,347	14,089
1961	28,173	77,962	8,127	34	312	2,021	638	636	8,053	45	11,028	72,501	11,963
1970	50,128	93,364	8,253	355	3,177	2,109	654	89	3,885	55	6,671	51,299	9,164

Buckinghamshire

Year	Wheat	Barley	Oats	Rye	Beans and Peas	Potatoes	Turnips and Swedes	Mangolds	Cabbages, etc	Hops	Bare Fallow	Clover and Rotation Grass	Other Crops
1869	60,735	28,656	25,690	509	27,113	1,687	22,439	3,737	1,076	2	9,577	19,732	7,562
1871	58,831	30,549	23,560	408	26,036	2,185	21,541	4,890	2,037	6	6,342	29,757	7,737
1877	55,295	28,270	27,154	488	22,725	1,402	18,949	4,867	1,589	0	10,276	32,422	9,483
1885	46,143	25,717	27,910	144	16,039	1,961	18,502	4,874	1,000	0	9,137	32,070	8,403
1891	43,042	23,345	26,326	323	13,409	1,482	15,861	4,732	1,365	0	7,501	30,390	6,693
1900	34,298	18,682	29,803	523	9,549	1,586	10,100	5,435	2,938	0	5,872	31,470	6,133
1901	31,862	18,191	28,044	669	9,049	1,710	9,659	5,123	1,987	0	8,158	35,343	6,178
1910	31,641	15,116	26,348	418	8,911	1,665	8,369	5,800	1,514	0	8,652	22,775	4,535
1920	36,453	12,393	29,427	554	7,595	2,636	5,950	4,486	1,655	0	14,900	20,878	5,202
1930	20,186	5,617	19,372	317	4,197	1,457	2,723	2,985	1,380	0	6,504	16,937	8,479
1931	16,075	5,155	17,946	167	3,737	1,470	2,294	2,601	1,278	0	6,431	19,547	8,027
1940	19,870	7,318	24,689	56	1,257	1,777	1,794	2,071	2,113	0	7,520	11,440	9,348
1950	44,282	17,723	29,868	311	2,217	3,664	649	2,449	3,785	0	9,295	54,042	23,380
1960	35,250	39,997	14,012	77	516	1,924	331	536	6,241	0	4,448	59,583	9,471
1961	27,907	44,922	10,471	34	444	1,254	152	355	4,956	0	8,793	62,572	8,536
1970	42,146	75,329	11,685	6	2,756	1,044	117	37	2,544	0	5,219	43,990	6,166

Cambridgeshire (including Isle of Ely)

Year	Wheat	Barley	Oats	Rye	Beans and Peas	Potatoes	Turnips and Swedes	Mangolds	Cabbages, etc	Hops	Bare Fallow	Clover and Rotation Grass	Other Crops
1869	130,686	54,937	37,593	798	41,923	10,172	20,115	15,510	12,072	14	19,389	32,424	17,754
1871	130,100	55,802	35,731	1,045	36,516	13,165	16,172	16,723	15,817	3	12,788	41,888	21,124
1877	130,478	60,426	35,245	1,344	32,979	8,874	15,781	18,223	16,626	0	15,830	43,378	23,847
1885	105,130	67,142	38,721	1,207	29,577	11,608	20,469	16,357	9,981	0	20,040	52,665	23,705
1891	110,191	58,535	41,517	591	28,991	16,147	17,147	18,780	9,095	0	13,116	50,463	16,747
1900	95,439	52,484	49,619	725	21,597	22,790	15,755	17,858	8,035	0	12,115	57,166	19,402
1901	93,514	53,896	46,389	1,038	20,071	25,501	16,225	16,880	7,153	0	12,464	60,869	20,687
1910	100,432	53,821	47,220	915	25,817	26,865	14,114	16,934	5,693	0	13,119	44,305	22,796
1920	96,091	56,071	46,303	5,271	19,540	36,416	9,461	15,184	6,391	0	17,196	40,813	34,855
1930	81,552	47,703	41,456	1,811	15,168	32,152	5,868	9,336	4,342	0	11,559	38,770	79,487
1931	77,783	52,422	38,471	1,260	14,930	35,905	5,260	8,732	4,468	0	13,808	44,997	68,053
1940	96,737	54,832	37,541	769	7,274	46,976	2,161	5,612	3,744	0	12,655	31,964	78,272
1950	112,368	71,520	27,665	3,260	6,132	54,568	1,034	5,297	4,479	0	6,210	36,252	88,227
1960	123,860	98,419	16,937	757	7,588	44,120	793	2,481	3,303	0	7,212	28,413	87,550
1961	113,551	113,049	15,973	1,204	6,818	38,473	885	1,973	3,163	10	11,309	34,299	81,166
1970	121,967	118,680	7,684	336	14,331	36,745	156	332	1,330	0	7,470	9,634	89,970

Cheshire

Year	Wheat	Barley	Oats	Rye	Beans and Peas	Potatoes	Turnips and Swedes	Mangolds	Cabbages, etc	Hops	Bare Fallow	Clover and Rotation Grass	Other Crops
1869	41,553	4,167	46,078	1,688	4,923	25,518	8,336	1,532	308	0	2,894	39,802	1,408
1871	34,524	4,586	45,294	1,726	4,547	24,806	8,232	2,335	217	0	1,890	65,906	1,373
1877	25,606	3,322	47,409	1,598	3,167	20,360	8,599	2,067	511	0	2,043	58,443	1,240
1885	19,281	2,039	52,944	2,970	2,238	28,052	9,640	1,599	698	0	590	58,818	2,102
1891	15,376	2,234	56,500	3,178	1,588	26,083	10,455	2,075	558	0	592	58,747	2,916
1900	16,740	1,630	61,019	2,173	887	25,514	9,720	4,461	995	0	266	70,987	2,917
1901	12,223	2,106	62,556	2,138	845	24,892	9,313	4,368	967	0	435	73,982	2,944
1910	14,951	1,162	65,641	2,122	422	20,778	10,437	5,170	1,276	0	267	68,143	2,982
1920	19,331	3,092	72,045	1,577	446	24,647	9,975	5,070	1,115	0	1,757	71,046	5,710
1930	9,351	533	54,888	486	360	17,670	6,823	3,646	1,299	0	445	66,702	6,565
1931	8,291	546	49,810	440	368	18,800	6,628	3,341	1,200	0	754	68,237	6,434
1940	24,736	1,124	56,599	91	142	18,905	4,645	3,760	2,090	0	345	55,815	9,264
1950	29,609	1,693	46,045	715	345	21,560	3,477	5,006	3,842	1	533	92,219	34,774
1960	18,168	15,856	26,297	93	30	12,147	2,039	1,740	5,477	0	578	117,397	17,251
1961	14,916	22,934	21,976	44	12	10,376	1,734	1,308	4,786	0	978	118,151	14,515
1970	10,677	47,090	8,438	54	262	11,092	613	184	1,555	0	1,289	104,285	16,999

Cornwall

Year	Wheat	Barley	Oats	Rye	Beans and Peas	Potatoes	Turnips and Swedes	Mangolds	Cabbages, etc	Hops	Bare Fallow	Clover and Rotation Grass	Other Crops
1869	55,285	51,507	44,079	120	86	7,833	30,424	8,959	7,302	0	34,327	105,835	1,048
1871	54,336	54,679	44,485	123	129	9,124	31,809	11,201	9,869	2	24,752	133,472	1,330
1877	44,871	51,286	45,354	84	82	6,478	29,311	12,951	10,735	0	17,132	141,879	1,735
1885	32,720	44,273	54,352	341	107	6,285	26,870	11,728	7,902	0	8,014	163,092	1,680
1891	29,767	38,889	55,856	302	84	5,588	25,198	10,907	8,246	0	5,721	191,343	2,733
1900	28,010	32,300	64,340	333	132	5,601	19,094	11,014	10,114	0	3,933	189,313	3,149
1901	24,217	32,347	64,150	333	119	5,554	18,819	10,917	9,977	0	4,080	188,026	2,895
1910	21,085	31,749	67,343	209	114	4,752	14,800	11,712	10,320	0	2,726	198,026	2,947
1920	22,772	25,253	72,430	166	63	7,459	12,621	9,801	13,735	0	3,467	147,096	45,036
1930	9,075	11,747	47,761	90	194	3,950	8,260	7,000	9,879	0	1,732	186,110	51,797
1931	7,750	8,387	46,317	78	152	3,892	7,709	6,712	9,496	0	1,523	191,738	50,239
1940	14,796	10,601	60,351	80	45	7,700	5,391	4,391	7,859	0	1,394	165,616	72,770
1950	10,420	8,569	35,136	183	140	19,038	4,519	5,432	17,110	0	1,748	177,745	103,280
1960	3,215	57,572	9,141	77	54	9,702	2,398	2,924	24,418	0	2,124	226,199	47,847
1961	2,932	71,102	6,243	70	7	8,265	2,033	2,440	22,572	0	3,298	232,361	39,677
1970	4,164	60,608	11,170	199	56	7,631	1,051	632	11,257	0	3,839	206,307	47,159

Durham

Year	Wheat	Barley	Oats	Rye	Beans and Peas	Potatoes	Turnips and Swedes	Mangolds	Cabbages, etc	Hops	Bare Fallow	Clover and Rotation Grass	Other Crops
1869	47,973	11,976	40,153	288	7,710	7,978	23,055	180	521	0	24,732	33,827	3,827
1871	42,976	17,010	38,015	299	7,386	9,352	22,163	180	669	0	23,566	53,203	4,027
1877	31,285	19,563	34,307	87	3,950	7,603	21,570	118	511	0	20,935	57,925	3,498
1885	25,905	16,793	35,347	139	3,461	9,525	21,683	228	466	0	16,332	48,265	3,377
1891	20,510	16,888	34,223	75	2,357	7,816	21,391	162	454	0	12,059	51,839	2,803
1900	14,114	17,492	32,750	120	1,250	9,399	20,813	806	633	0	7,186	51,780	2,180
1901	8,794	18,486	34,590	109	1,340	9,854	19,670	1,124	613	0	7,051	52,381	2,077
1910	10,715	19,726	33,018	87	960	11,796	19,381	777	604	0	5,083	41,626	2,004
1920	15,081	25,122	42,044	164	1,441	12,833	19,672	746	973	0	6,399	35,717	3,478
1930	14,404	8,523	37,552	61	663	12,983	15,728	350	380	0	3,313	42,412	3,290
1931	12,274	7,971	36,327	62	722	12,296	14,974	421	334	0	3,796	45,097	3,297
1940	21,144	9,051	45,648	50	960	13,904	12,162	1,068	1,738	0	2,509	33,893	4,823
1950	39,626	11,364	48,792	353	1,637	22,295	11,196	1,205	3,211	0	2,255	65,606	12,031
1960	21,720	31,078	39,529	22	162	12,914	8,924	706	4,575	0	1,653	77,897	3,669
1961	13,342	39,300	37,054	8	164	10,522	8,311	628	4,353	2	2,400	83,017	3,172
1970	17,579	76,259	13,143	0	144	8,253	3,460	79	1,687	0	2,814	63,753	2,674

Cumberland

Year	Wheat	Barley	Oats	Rye	Beans and Peas	Potatoes	Turnips and Swedes	Mangolds	Cabbages, etc	Hops	Bare Fallow	Clover and Rotation Grass	Other Crops
1869	28,916	10,493	71,189	932	485	12,866	35,305	654	1,695	0	7,964	88,727	686
1871	26,518	10,200	71,681	699	867	12,846	34,318	1,261	1,908	0	6,116	108,730	479
1877	17,614	7,378	70,038	609	408	10,667	33,061	1,348	1,496	0	5,044	93,736	516
1885	10,873	4,481	76,586	800	183	12,079	32,546	815	742	0	3,039	107,270	418
1891	5,028	3,816	76,131	739	78	11,132	33,464	914	678	0	1,219	117,988	601
1900	3,174	1,988	73,030	468	68	8,863	30,419	2,221	751	0	561	115,532	533
1901	1,869	1,954	71,830	450	69	8,436	29,070	2,605	822	0	546	115,748	546
1910	821	1,378	69,163	352	46	7,246	27,925	2,363	455	0	233	93,704	591
1920	1,277	2,143	77,205	439	54	9,855	28,016	1,950	1,918	0	872	82,679	2,129
1930	218	211	55,187	126	45	5,134	23,882	1,198	381	0	125	90,663	2,631
1931	263	192	52,478	88	77	5,546	22,394	1,247	527	0	265	92,738	2,395
1940	2,355	976	63,096	67	166	6,794	15,602	2,053	1,645	0	157	91,248	4,872
1950	3,444	742	68,683	58	280	11,527	18,014	1,934	4,517	0	208	131,750	8,400
1960	1,084	3,280	39,078	8	4	5,320	12,966	1,224	4,996	0	316	148,902	4,578
1961	1,142	5,292	36,746	8	34	4,557	12,062	1,164	4,991	0	355	154,303	4,312
1970	1,644	34,955	8,362	77	31	3,244	7,181	314	2,112	0	537	130,688	9,198

Derbyshire

Year	Wheat	Barley	Oats	Rye	Beans and Peas	Potatoes	Turnips and Swedes	Mangolds	Cabbages, etc	Hops	Bare Fallow	Clover and Rotation Grass	Other Crops
1869	35,543	14,244	30,725	275	4,432	3,358	12,986	1,208	2,235	0	8,546	25,653	3,545
1871	32,844	15,763	28,635	305	4,553	3,842	11,982	1,920	2,613	0	6,966	43,062	4,234
1877	26,678	13,915	26,839	168	1,997	2,692	10,764	1,741	2,942	0	8,733	35,458	3,319
1885	19,699	9,239	25,775	69	1,511	3,007	12,461	1,863	2,392	0	5,717	24,889	2,358
1891	17,327	8,666	25,953	125	853	2,918	11,844	1,997	1,686	0	3,914	22,782	2,208
1900	15,560	6,133	24,543	152	535	2,580	9,220	3,154	1,930	0	2,541	24,697	1,841
1901	12,890	6,062	23,961	121	610	2,563	8,965	3,049	2,119	0	3,212	24,696	1,813
1910	13,987	4,911	23,276	100	421	2,045	9,328	3,919	2,312	0	2,048	17,901	1,512
1920	22,025	7,522	26,098	242	579	3,810	10,690	4,344	3,055	0	4,108	22,536	3,334
1930	13,802	2,276	21,549	135	493	3,134	7,394	3,971	2,519	0	1,788	18,628	4,095
1931	12,372	1,996	20,295	108	464	3,317	6,693	3,721	2,382	0	2,310	20,240	3,854
1940	21,101	2,889	32,363	94	110	3,783	4,719	4,411	3,525	0	1,777	13,975	7,457
1950	28,317	3,907	32,113	490	368	8,555	4,139	6,124	6,013	0	1,787	45,873	18,967
1960	22,453	13,340	23,646	111	73	4,821	2,398	1,986	7,520	0	1,569	60,489	9,193
1961	17,594	18,627	20,088	48	44	3,946	2,006	1,636	7,206	0	2,128	67,628	7,486
1970	13,163	49,159	7,695	6	358	4,321	689	250	3,217	0	2,377	49,351	8,734

Devon

Year	Wheat	Barley	Oats	Rye	Beans and Peas	Potatoes	Turnips and Swedes	Mangolds	Cabbages, etc	Hops	Bare Fallow	Clover and Rotation Grass	Other Crops
1869	128,549	82,301	88,148	254	2,862	18,502	84,469	20,968	12,900	5	49,843	115,054	7,755
1871	124,804	88,884	88,537	553	4,384	21,412	84,822	28,248	17,731	8	32,629	156,506	7,424
1877	112,525	75,539	92,790	332	2,388	15,002	82,629	30,213	19,046	1	24,017	185,928	10,472
1885	84,927	60,459	105,037	260	1,561	13,718	74,747	29,011	13,964	0	21,063	196,743	9,415
1891	74,888	52,400	104,212	416	1,667	12,948	68,614	29,628	16,282	0	10,758	207,700	5,929
1900	57,376	44,235	122,025	436	1,131	12,468	56,073	31,907	18,478	0	7,179	219,091	5,208
1901	50,520	44,022	122,627	424	1,275	12,911	54,867	31,702	17,068	0	6,839	217,036	4,760
1910	50,272	40,173	118,623	311	1,226	10,737	49,394	34,575	14,322	0	4,674	193,112	3,541
1920	51,427	40,312	139,155	276	1,414	13,661	44,774	27,538	20,719	0	8,463	153,269	20,512
1930	25,267	21,874	95,099	105	1,261	7,643	29,252	21,210	12,927	0	3,718	179,184	38,931
1931	18,737	17,977	91,918	114	1,074	7,795	28,173	20,071	12,071	0	3,556	187,711	36,639
1940	29,326	34,753	126,748	95	367	12,431	21,925	13,651	10,586	0	1,601	162,321	51,085
1950	27,687	42,287	84,551	422	795	22,212	22,390	14,242	25,404	0	3,308	209,905	92,702
1960	8,195	93,954	29,357	231	160	8,793	16,530	8,328	38,432	0	2,440	297,018	46,647
1961	5,911	116,404	17,658	87	52	6,840	15,136	6,988	36,538	0	3,723	308,041	36,855
1970	17,496	118,369	23,921	146	235	5,431	11,098	1,657	20,990	0	3,670	297,901	25,598

Dorset

Year	Wheat	Barley	Oats	Rye	Beans and Peas	Potatoes	Turnips and Swedes	Mangolds	Cabbages, etc	Hops	Bare Fallow	Clover and Rotation Grass	Other Crops
1869	47,399	39,430	20,404	658	6,886	2,900	42,192	4,488	2,419	0	8,202	42,397	8,117
1871	46,199	41,089	21,376	1,184	8,413	3,378	43,514	5,830	2,745	0	6,167	50,569	8,373
1877	41,640	38,501	22,743	1,032	6,982	2,529	41,422	5,349	3,655	0	5,698	56,136	9,401
1885	32,622	34,982	24,538	575	4,489	2,226	39,129	5,694	2,926	0	5,026	52,157	9,256
1891	28,162	30,976	25,854	566	4,562	2,109	36,289	5,977	2,719	0	3,666	50,304	6,999
1900	21,817	29,075	28,779	1,114	2,352	1,961	32,371	6,167	2,901	0	2,678	46,933	5,970
1901	20,615	29,521	27,740	1,206	2,327	1,898	32,688	5,956	2,485	0	3,477	49,071	5,944
1910	21,826	21,976	30,028	548	2,006	1,545	31,748	6,947	1,819	0	3,114	41,531	4,402
1920	21,429	20,816	34,608	1,863	1,925	1,733	26,120	5,866	1,863	0	6,854	39,361	9,902
1930	13,081	11,668	23,653	566	1,042	1,249	18,547	4,256	2,328	0	3,616	37,345	9,582
1931	12,808	11,312	21,115	431	831	1,295	16,963	4,039	1,857	0	4,302	38,123	8,635
1940	17,787	13,127	29,416	213	363	1,599	11,727	3,151	3,159	0	3,990	26,466	9,828
1950	25,333	22,837	19,083	524	743	4,975	5,129	4,156	9,635	0	5,887	65,882	22,190
1960	13,633	54,694	8,442	219	129	2,034	2,062	1,048	17,260	0	3,162	104,978	6,609
1961	13,480	57,427	5,541	66	81	1,644	1,449	676	15,674	0	4,200	110,806	5,612
1970	30,532	75,750	9,452	456	1,261	1,336	719	53	8,996	0	2,532	109,098	3,341

Essex

Year	Wheat	Barley	Oats	Rye	Beans and Peas	Potatoes	Turnips and Swedes	Mangolds	Cabbages, etc	Hops	Bare Fallow	Clover and Rotation Grass	Other Crops
1869	192,316	104,842	46,930	1,587	82,251	10,346	29,988	29,185	4,580	99	44,085	52,151	31,723
1871	193,912	103,832	39,694	1,375	82,287	12,598	26,326	31,604	6,494	63	36,097	71,946	33,892
1877	174,563	109,852	45,120	1,733	72,698	10,103	23,642	31,281	5,416	42	42,453	85,356	37,619
1885	145,570	119,159	42,405	1,107	65,014	12,175	26,346	28,435	5,875	2	43,406	89,265	39,872
1891	144,664	102,866	47,690	1,404	58,827	9,605	25,565	26,406	6,453	0	45,076	96,853	29,513
1900	113,722	84,059	62,336	1,173	41,602	9,629	20,276	26,325	10,096	0	32,812	97,543	30,288
1901	110,826	82,679	59,894	1,455	41,671	9,966	20,245	27,014	9,146	0	32,930	102,735	31,296
1910	117,836	63,111	69,680	960	49,008	10,701	16,122	27,886	9,325	0	36,920	70,248	34,927
1920	131,796	64,272	68,145	1,607	50,336	16,728	11,009	19,138	8,877	0	42,912	66,558	38,605
1930	91,204	60,128	53,575	748	34,775	12,204	5,384	11,081	5,260	0	26,869	71,760	49,606
1931	77,471	66,077	45,347	393	30,392	13,438	4,627	9,349	5,004	0	29,832	78,683	48,073
1940	83,979	85,002	52,770	308	9,243	18,295	3,647	6,872	6,355	0	23,853	56,446	68,099
1950	126,422	98,036	52,719	1,298	11,086	31,390	720	7,659	6,380	8	15,773	68,562	119,714
1960	152,626	155,316	25,565	355	12,448	31,010	798	1,840	6,428	7	13,460	69,626	78,725
1961	110,464	184,500	21,836	143	11,432	24,352	342	1,386	5,907	7	27,992	87,125	69,591
1970	171,992	195,770	12,969	74	32,920	24,830	105	151	2,260	1	12,962	37,297	66,428

Gloucestershire

Year	Wheat	Barley	Oats	Rye	Beans and Peas	Potatoes	Turnips and Swedes	Mangolds	Cabbages, etc	Hops	Bare Fallow	Clover and Rotation Grass	Other Crops
1869	96,491	41,524	16,907	250	30,628	6,273	43,009	3,578	946	29	10,022	71,715	11,252
1871	95,830	43,288	15,361	429	27,951	7,931	43,996	5,320	1,188	35	7,045	92,604	11,635
1877	86,302	40,656	18,965	312	24,776	6,036	40,572	3,640	1,157	32	11,865	93,714	13,970
1885	67,827	33,997	27,154	312	17,369	6,131	37,605	3,920	854	24	12,408	98,064	12,107
1891	60,899	32,348	25,493	181	15,223	5,465	33,756	3,903	979	25	7,101	89,931	10,890
1900	47,379	28,237	33,553	449	11,877	4,048	28,174	5,470	1,489	47	4,431	89,214	9,355
1901	43,301	28,919	31,655	324	11,351	4,074	27,189	5,047	1,540	46	5,426	94,596	8,454
1910	46,129	25,828	31,131	220	9,574	2,779	26,072	6,589	1,175	31	5,199	69,549	7,380
1920	55,217	26,124	35,097	266	8,436	3,222	20,620	5,771	1,690	4	13,500	61,376	9,644
1930	29,970	10,819	25,865	191	5,229	2,038	13,059	3,961	1,837	7	4,349	62,553	22,896
1931	25,435	10,862	23,830	148	4,881	2,050	10,906	3,708	1,519	6	5,745	65,299	22,271
1940	38,423	15,289	37,416	18	1,307	2,578	7,943	2,723	2,766	0	5,053	44,946	26,603
1950	60,527	35,259	29,613	666	2,919	8,454	4,442	4,469	7,722	0	7,667	95,116	56,434
1960	42,249	73,993	14,661	114	450	4,392	1,845	1,327	11,317	0	3,787	124,410	23,570
1961	37,876	78,634	10,844	52	348	3,386	1,743	882	9,652	0	7,202	130,376	21,375
1970	60,852	121,626	11,144	43	2,679	3,792	915	129	4,569	0	5,388	87,823	14,667

Hampshire (including Isle of Wight)

Year	Wheat	Barley	Oats	Rye	Beans and Peas	Potatoes	Turnips and Swedes	Mangolds	Cabbages, etc	Hops	Bare Fallow	Clover and Rotation Grass	Other Crops
1869	115,763	65,310	65,759	2,442	17,407	4,733	93,735	8,835	6,776	2,536	21,450	102,908	23,458
1871	110,853	65,373	64,102	3,259	19,761	5,800	93,134	12,163	7,966	2,625	17,732	111,157	23,055
1877	105,776	60,101	70,180	2,927	15,595	4,445	80,287	12,330	9,017	3,156	18,614	116,185	28,446
1885	85,186	56,574	67,024	2,066	11,376	5,470	78,385	13,459	7,407	3,303	17,957	110,802	28,761
1891	77,236	48,386	70,188	1,982	10,539	5,265	69,143	12,657	8,590	2,749	19,146	112,874	23,142
1900	59,880	40,863	76,417	5,055	5,993	5,980	55,039	13,944	12,011	2,231	14,482	113,120	23,851
1901	55,078	40,706	73,836	5,556	5,572	5,976	54,159	13,103	11,411	2,133	16,540	115,775	22,364
1910	62,228	32,878	79,457	2,719	5,518	5,282	54,825	15,735	8,205	1,411	19,058	91,253	19,786
1920	61,729	37,639	88,712	7,189	4,924	7,116	37,215	13,485	7,943	838	35,993	75,616	24,488
1930	39,564	23,153	63,232	2,979	3,063	4,272	26,331	10,188	8,170	867	20,864	68,886	23,990
1931	37,294	22,146	55,587	2,241	2,882	4,232	23,127	9,440	7,047	751	23,225	74,008	23,043
1940	48,760	33,949	64,798	736	797	6,796	15,993	6,623	9,417	532	22,179	52,749	25,901
1950	77,844	68,039	47,580	1,332	1,687	16,477	7,555	7,165	15,346	678	14,219	113,079	61,880
1960	45,365	145,326	19,186	259	190	8,622	3,697	2,025	24,817	580	9,666	155,417	23,248
1961	39,959	151,041	12,582	147	259	6,563	2,813	1,384	21,944	587	13,499	162,050	20,858
1970	75,133	176,384	13,293	504	7,025	6,774	1,211	158	12,980	524	7,470	122,034	15,524

Herefordshire

Year	Wheat	Barley	Oats	Rye	Beans and Peas	Potatoes	Turnips and Swedes	Mangolds	Cabbages, etc	Hops	Bare Fallow	Clover and Rotation Grass	Other Crops
1869	60,887	20,877	12,032	160	15,868	2,827	27,000	1,260	229	5,738	7,721	32,237	5,090
1871	61,481	22,897	12,261	320	17,461	3,246	26,546	2,352	413	5,998	7,815	37,317	7,769
1877	56,285	21,420	12,646	189	16,600	2,282	24,327	2,056	459	5,839	8,281	43,441	6,867
1885	39,546	21,671	18,421	73	9,666	2,569	23,542	1,947	208	6,703	6,936	43,126	4,849
1891	34,606	22,132	18,106	99	8,270	2,336	21,444	1,918	255	6,560	4,274	39,581	4,910
1900	25,356	20,246	24,808	197	5,968	1,970	16,818	3,110	582	7,287	2,355	38,237	3,619
1901	22,568	19,828	23,638	149	5,920	1,932	17,113	2,793	529	7,497	3,032	40,526	3,281
1910	22,399	18,405	23,548	103	5,517	1,430	15,103	4,209	466	4,987	1,297	28,460	3,000
1920	31,671	17,738	31,741	176	9,060	1,839	13,788	4,208	1,724	2,993	3,630	25,615	4,052
1930	13,258	7,228	23,602	52	2,902	1,314	9,055	4,109	902	3,688	1,086	29,414	26,550
1931	12,975	6,392	22,932	39	2,593	1,270	8,634	4,005	932	3,817	1,362	30,393	24,437
1940	21,932	10,612	31,223	9	981	1,748	7,065	4,078	1,883	4,057	702	23,964	29,041
1950	40,667	17,726	27,053	158	2,840	8,859	7,819	5,794	7,357	4,702	1,311	59,993	46,266
1960	27,465	22,247	17,238	42	526	5,729	7,421	4,580	6,242	4,386	1,225	86,927	30,733
1961	27,600	24,919	14,139	69	309	4,629	7,042	3,936	6,168	4,325	1,892	88,689	29,962
1970	36,837	50,204	18,156	13	1,216	7,156	5,358	978	2,465	4,131	1,441	72,420	22,267

Hertfordshire

Year	Wheat	Barley	Oats	Rye	Beans and Peas	Potatoes	Turnips and Swedes	Mangolds	Cabbages, etc	Hops	Bare Fallow	Clover and Rotation Grass	Other Crops
1869	62,103	45,921	27,504	297	20,848	1,535	28,183	4,867	1,921	3	15,101	22,398	9,682
1871	64,411	45,553	25,227	248	17,457	2,144	26,983	5,719	3,144	6	10,752	38,775	8,054
1877	61,481	45,542	26,386	337	15,232	1,999	24,247	5,289	2,620	3	14,423	37,473	9,215
1885	54,112	43,747	27,979	178	11,046	5,481	22,374	5,587	1,657	3	13,924	39,793	8,688
1891	56,968	36,334	30,227	213	9,669	3,650	19,043	5,592	2,222	0	13,291	41,509	7,077
1900	51,391	27,766	36,237	217	5,887	4,257	11,931	6,027	4,072	0	11,289	45,667	6,759
1901	47,542	27,749	34,631	278	5,911	5,233	11,962	5,690	3,351	0	13,158	48,293	6,803
1910	56,325	18,451	36,871	164	8,163	4,660	11,279	7,431	2,429	0	13,523	35,736	6,231
1920	57,694	20,334	40,963	527	4,929	6,393	6,952	6,020	2,506	0	16,391	36,244	8,252
1930	39,067	15,830	33,861	135	2,574	3,329	3,209	3,971	2,175	0	12,353	35,440	12,662
1931	32,323	15,263	29,022	124	2,654	3,710	2,635	3,488	1,923	0	11,603	42,897	12,978
1940	43,820	20,380	25,766	56	2,070	4,301	2,063	2,575	2,999	0	9,797	26,887	14,011
1950	51,033	37,666	25,087	416	2,114	7,536	748	2,829	3,364	0	6,601	41,605	25,061
1960	44,853	67,544	13,308	110	1,559	5,367	486	971	3,852	0	4,914	41,878	14,099
1961	39,082	71,296	11,178	14	1,463	4,254	271	702	3,630	0	6,436	46,341	12,841
1970	50,575	93,074	8,264	16	8,286	3,991	122	95	1,214	0	4,338	27,071	7,768

Huntingdonshire (including Soke of Peterborough after 1910)

Year	Wheat	Barley	Oats	Rye	Beans and Peas	Potatoes	Turnips and Swedes	Mangolds	Cabbages, etc	Hops	Bare Fallow	Clover and Rotation Grass	Other Crops
1869	48,761	20,271	11,461	493	22,215	3,425	4,306	3,693	3,185	0	15,234	8,949	5,757
1871	47,462	22,130	10,714	692	20,432	4,834	3,634	4,388	5,800	0	9,482	13,729	7,838
1877	45,600	26,252	12,497	165	17,256	3,149	3,663	3,712	3,266	0	11,983	14,838	7,476
1885	37,138	23,464	12,185	204	15,512	3,510	4,597	3,857	2,703	0	15,689	19,597	6,710
1891	37,344	20,214	10,189	326	12,566	6,787	3,412	3,882	1,627	0	11,420	20,385	5,244
1900	31,161	20,957	12,842	424	8,975	8,687	2,009	4,055	1,593	0	8,902	20,066	4,529
1901	31,563	20,445	12,287	489	8,500	9,025	2,300	3,811	1,369	0	7,642	20,748	4,901
1910	35,589	18,946	11,053	581	11,495	8,625	1,615	3,755	1,144	0	10,145	14,784	4,889
1920	44,000	26,799	13,809	797	12,535	10,901	3,541	4,596	943	0	13,362	17,811	9,537
1930	35,721	18,815	11,911	452	10,167	9,014	2,086	3,101	716	0	7,130	17,665	25,546
1931	32,521	19,656	11,286	279	9,441	9,889	1,937	2,845	847	0	7,936	21,389	21,264
1940	39,552	21,760	15,207	279	3,955	12,356	1,187	2,029	666	0	8,980	13,985	24,665
1950	59,321	31,214	12,082	440	3,592	20,787	333	2,213	1,468	0	4,017	19,592	35,626
1960	56,530	49,704	8,612	120	5,055	16,673	261	1,025	1,837	0	3,262	19,580	30,251
1961	49,370	58,014	7,815	130	3,220	14,680	164	816	1,840	1	6,316	24,537	27,026
1970	73,188	71,787	4,408	380	9,468	17,762	72	119	728	0	4,402	9,464	35,597

Kent

Year	Wheat	Barley	Oats	Rye	Beans and Peas	Potatoes	Turnips and Swedes	Mangolds	Cabbages, etc	Hops	Bare Fallow	Clover and Rotation Grass	Other Crops
1869	110,878	41,298	54,455	643	46,814	14,188	32,070	8,400	4,501	38,606	11,836	40,204	19,728
1871	112,829	41,567	52,642	640	48,019	14,905	32,609	10,033	4,493	36,672	8,118	61,029	20,012
1877	98,697	43,018	54,509	608	38,684	13,576	27,095	12,113	6,148	45,984	10,178	59,849	24,882
1885	74,093	48,088	47,659	1,289	32,903	17,176	26,461	11,833	6,881	44,834	8,835	54,209	27,584
1891	67,208	47,796	49,045	639	30,876	13,501	23,429	12,077	6,622	34,266	9,841	53,417	39,706
1900	42,993	36,748	47,413	894	19,903	13,302	18,556	11,835	7,457	31,514	7,487	48,996	44,252
1901	42,376	36,165	44,497	979	18,842	13,632	18,416	11,894	6,694	31,242	8,675	50,045	45,559
1910	46,383	32,755	44,650	547	20,026	13,666	16,569	13,542	7,526	20,078	7,614	32,762	46,414
1920	52,507	28,485	54,087	732	18,426	21,863	15,429	11,958	8,571	13,488	14,924	37,733	43,653
1930	29,463	20,576	34,415	405	10,962	14,252	8,909	8,174	7,256	11,820	7,728	25,051	92,668
1931	25,039	20,820	30,127	227	9,630	15,008	7,790	7,570	6,655	11,494	9,571	25,030	93,770
1940	40,215	23,163	37,122	121	6,345	17,887	5,956	6,176	7,612	10,311	8,312	18,029	108,659
1950	66,887	37,748	43,282	650	5,771	26,432	2,783	6,960	9,139	12,388	12,513	63,332	141,283
1960	58,232	73,014	25,352	260	1,798	23,244	1,857	2,804	10,986	11,186	9,404	88,979	119,729
1961	53,103	78,682	20,350	50	1,050	19,707	1,609	2,226	9,668	10,708	15,415	96,473	113,372
1970	73,993	114,454	16,417	4	5,173	20,064	826	456	4,325	9,146	13,615	68,022	96,206

Lancashire

Year	Wheat	Barley	Oats	Rye	Beans and Peas	Potatoes	Turnips and Swedes	Mangolds	Cabbages, etc	Hops	Bare Fallow	Clover and Rotation Grass	Other Crops
1869	41,335	7,480	52,364	1,330	4,543	40,707	10,870	1,356	956	0	5,438	55,000	2,162
1871	36,765	10,149	52,221	1,594	6,328	39,056	10,876	1,872	1,002	0	4,232	83,948	2,566
1877	28,984	9,089	55,354	1,091	5,122	33,783	11,327	1,653	1,421	0	3,220	72,863	2,513
1885	25,622	8,051	63,128	1,895	3,309	39,397	10,704	1,229	1,767	0	1,953	75,380	3,476
1891	20,250	8,194	71,453	2,122	2,488	38,323	10,481	1,203	1,631	0	1,329	74,657	5,290
1900	21,259	6,321	72,776	1,773	1,895	41,932	8,329	1,986	2,841	0	1,161	81,374	4,603
1901	17,329	7,877	72,202	2,177	1,572	43,340	7,605	2,147	2,661	0	1,242	83,140	4,593
1910	19,757	4,427	83,786	1,029	1,311	42,604	8,208	1,951	2,951	0	1,330	65,789	4,432
1920	31,501	6,280	89,381	2,326	865	50,239	12,316	2,578	3,356	0	3,003	78,778	6,257
1930	15,671	986	73,961	374	1,504	35,488	5,763	1,601	761	0	1,751	58,152	10,885
1931	12,461	658	67,833	247	1,578	36,461	5,543	1,581	700	0	1,948	60,110	11,302
1940	30,983	1,090	82,974	115	311	38,084	4,981	2,175	2,708	0	696	44,191	18,728
1950	30,797	2,220	74,198	1,735	667	36,094	4,628	2,884	3,342	0	1,016	75,432	28,230
1960	28,421	16,414	41,234	118	63	21,281	1,691	867	3,153	0	1,176	70,943	23,311
1961	25,652	23,567	36,725	218	179	19,090	1,366	672	2,639	0	1,817	73,707	20,323
1970	13,834	66,683	10,205	1	302	15,349	612	145	822	0	2,041	50,906	24,331

Leicestershire

Year	Wheat	Barley	Oats	Rye	Beans and Peas	Potatoes	Turnips and Swedes	Mangolds	Cabbages, etc	Hops	Bare Fallow	Clover and Rotation Grass	Other Crops
1869	49,053	30,698	22,129	225	17,715	2,176	15,930	4,188	943	0	10,465	17,228	4,238
1871	48,003	33,215	21,066	266	16,464	2,508	15,529	5,630	984	0	6,235	27,244	4,497
1877	40,825	31,397	21,100	100	10,503	1,513	13,234	4,909	796	4	12,063	33,437	3,325
1885	28,567	20,434	23,081	99	7,497	2,104	13,925	4,227	929	0	10,150	30,862	2,056
1891	27,804	17,578	21,780	185	5,132	2,051	12,597	4,570	523	0	7,189	24,107	2,354
1900	24,193	13,822	24,968	184	4,173	2,222	9,167	6,422	1,220	0	5,131	22,668	2,311
1901	21,708	12,842	24,635	215	4,152	2,146	9,170	6,064	1,346	0	5,749	25,027	1,992
1910	19,827	9,670	23,466	94	2,354	1,498	7,396	7,497	1,536	0	5,465	20,081	1,456
1920	30,404	14,290	21,359	236	4,059	2,839	7,179	7,593	1,471	0	9,981	24,626	3,897
1930	16,696	4,372	16,318	125	1,988	2,327	4,761	5,218	1,506	0	2,604	19,238	4,868
1931	13,599	3,864	15,578	23	1,994	2,332	4,138	4,833	1,253	0	3,429	21,906	4,585
1940	23,509	5,587	27,055	21	623	2,696	3,057	4,827	2,014	0	4,533	12,683	8,787
1950	56,143	10,506	28,661	300	4,424	10,689	1,292	6,681	5,094	0	5,375	59,401	27,469
1960	45,952	30,238	29,241	206	957	5,901	1,084	2,191	6,454	0	3,311	69,136	9,129
1961	39,600	37,394	25,096	78	736	4,489	893	1,662	5,568	0	5,434	76,229	7,669
1970	54,020	83,257	16,646	18	4,967	4,885	316	184	2,372	0	4,840	54,356	6,911

Lincolnshire

Year	Wheat	Barley	Oats	Rye	Beans and Peas	Potatoes	Turnips and Swedes	Mangolds	Cabbages, etc	Hops	Bare Fallow	Clover and Rotation Grass	Other Crops
1869	310,990	143,668	109,209	2,476	61,751	42,245	135,608	14,855	16,901	33	25,735	130,899	21,586
1871	306,238	154,622	104,401	2,640	56,284	48,293	136,729	20,572	16,002	44	17,737	163,851	24,463
1877	286,324	182,823	94,224	1,800	59,442	36,552	136,135	20,047	18,492	24	26,625	169,685	25,478
1885	239,123	193,984	107,655	1,163	59,757	40,278	135,742	20,506	14,411	0	30,816	179,410	22,902
1891	226,060	202,389	108,503	1,475	49,051	44,740	133,208	22,681	12,889	0	22,594	185,790	21,600
1900	175,288	211,471	125,378	2,074	48,293	64,146	122,525	24,534	14,313	0	18,388	187,109	25,473
1901	173,098	207,940	119,347	2,425	46,334	69,434	119,689	23,039	12,701	0	22,892	195,550	25,438
1910	171,767	208,742	118,706	3,046	59,318	64,433	107,481	23,997	9,154	0	34,625	174,398	28,273
1920	161,415	199,308	118,854	7,727	55,211	95,457	92,754	21,221	6,959	0	61,176	157,520	49,110
1930	179,455	142,096	115,795	3,848	58,103	97,465	68,035	19,651	4,801	0	28,392	146,663	100,995
1931	159,508	141,827	107,016	2,992	60,304	103,937	61,674	18,106	4,312	0	44,116	165,236	85,827
1940	218,258	146,531	111,682	1,111	25,981	127,648	42,076	13,628	6,741	0	31,622	118,621	125,103
1950	285,212	154,976	77,604	9,208	16,614	153,982	20,160	15,084	10,604	0	20,800	141,125	207,019
1960	264,861	290,089	60,626	1,578	22,500	121,843	13,250	9,507	15,421	1	15,789	172,081	173,388
1961	245,966	317,430	55,435	1,624	20,002	104,030	11,292	8,092	15,036	18	22,660	197,511	165,244
1970	329,378	384,697	34,743	878	17,221	99,600	5,154	2,070	6,648	0	23,684	96,261	235,190

Middlesex (including London after 1900; Greater London for 1970)

Year	Wheat	Barley	Oats	Rye	Beans and Peas	Potatoes	Turnips and Swedes	Mangolds	Cabbages, etc	Hops	Bare Fallow	Clover and Rotation Grass	Other Crops
1869	9,262	1,937	5,601	612	2,928	2,830	2,071	1,818	688	7	763	2,347	3,340
1871	8,851	2,030	4,962	394	3,431	2,681	2,263	2,095	852	0	473	8,132	4,338
1877	8,266	2,449	5,112	313	3,388	2,978	1,566	2,047	1,171	0	780	5,404	5,323
1885	5,310	2,195	3,631	159	2,617	3,473	1,495	1,890	1,382	0	626	3,150	7,753
1891	4,892	1,302	3,358	151	2,419	3,183	1,217	1,530	1,665	0	855	2,484	8,623
1900	3,253	825	3,096	295	2,129	2,930	588	1,622	2,058	0	1,496	2,032	9,977
1901	3,095	870	2,675	367	1,882	3,014	541	1,617	1,917	0	1,632	2,398	9,823
1910	2,543	368	2,264	88	1,656	2,387	572	1,356	2,217	0	1,232	1,542	10,162
1920	2,849	643	3,139	185	1,226	3,047	712	1,231	2,052	0	2,489	2,033	7,996
1930	1,416	145	1,569	37	1,158	1,485	269	417	221	0	614	1,363	9,768
1931	1,150	180	1,257	18	1,083	1,491	249	378	264	0	777	1,078	9,225
1940	1,217	316	1,225	16	51	1,311	234	199	223	0	708	361	6,000
1950	4,852	686	1,872	10	39	1,166	35	245	325	0	858	2,559	6,076
1960	2,499	2,255	962	43	25	619	25	19	333	0	943	3,257	3,103
1961	1,095	2,702	584	5	64	507	14	19	253	0	1,487	3,849	3,066
1970	3,534	9,063	853	0	337	954	9	6	134	0	2,041	5,938	4,375

Norfolk

Year	Wheat	Barley	Oats	Rye	Beans and Peas	Potatoes	Turnips and Swedes	Mangolds	Cabbages, etc	Hops	Bare Fallow	Clover and Rotation Grass	Other Crops
1869	203,176	193,616	36,645	9,038	43,237	6,761	143,270	38,441	4,282	0	7,438	130,594	13,331
1871	206,192	187,078	31,594	8,295	25,368	6,618	143,680	40,184	4,083	4	6,120	171,245	9,938
1877	192,894	191,109	31,016	7,231	27,765	4,655	136,865	45,635	4,665	0	10,746	165,112	13,144
1885	162,661	208,475	34,849	6,533	25,734	5,984	130,910	51,055	3,486	0	10,977	162,703	15,883
1891	159,452	205,518	39,149	3,785	20,768	6,987	126,392	48,887	3,971	0	11,500	164,797	10,815
1900	126,574	200,409	63,959	3,801	14,889	11,179	117,333	51,756	4,709	0	6,177	163,147	14,235
1901	118,323	200,014	67,273	4,177	14,802	12,971	118,721	48,293	3,590	0	7,018	170,358	13,786
1910	131,307	182,596	75,069	4,886	23,623	11,790	110,444	54,536	3,131	0	6,833	159,119	18,185
1920	91,576	207,729	85,272	12,750	19,088	20,296	101,829	52,000	4,341	0	9,403	147,115	37,196
1930	82,623	184,026	66,519	4,708	13,916	16,742	60,023	46,117	5,692	0	6,804	128,264	112,254
1931	86,237	194,050	63,643	4,131	12,421	17,875	57,762	44,448	5,753	0	11,713	140,546	80,456
1940	106,046	209,085	67,091	3,747	6,910	27,691	21,579	31,450	9,736	0	7,032	107,498	139,400
1950	124,357	212,963	64,879	16,745	5,247	39,269	6,106	27,881	17,905	3	4,243	95,644	188,231
1960	130,253	292,802	38,870	3,208	3,604	33,639	5,263	16,823	16,436	35	4,555	84,094	194,643
1961	130,533	296,080	34,140	4,622	3,688	29,252	3,878	15,383	16,408	36	7,920	96,602	188,349
1970	152,446	345,478	17,173	2,540	7,798	39,725	2,002	4,056	7,547	81	10,311	48,059	210,024

Northamptonshire

Year	Wheat	Barley	Oats	Rye	Beans and Peas	Potatoes	Turnips and Swedes	Mangolds	Cabbages, etc	Hops	Bare Fallow	Clover and Rotation Grass	Other Crops
1869	82,249	52,259	18,795	322	37,182	2,436	26,771	4,568	1,296	0	17,222	19,822	7,348
1871	81,332	54,494	18,671	716	32,913	3,093	28,523	6,086	3,395	0	9,928	33,765	8,661
1877	79,103	54,918	18,781	549	27,955	2,345	24,114	5,351	2,232	6	17,647	35,308	8,886
1885	57,568	48,407	25,174	134	22,082	2,874	23,819	5,429	1,017	0	15,775	40,033	7,283
1891	54,300	47,081	21,419	129	17,145	2,550	21,769	5,461	1,204	0	12,288	34,383	6,387
1900	43,187	43,676	27,714	238	13,466	3,216	18,101	6,720	2,332	0	8,462	33,655	5,105
1901	44,399	42,164	25,706	330	12,273	3,854	17,737	6,317	2,044	0	8,743	35,585	4,817
1910	44,643	36,544	24,011	202	13,092	2,573	15,510	7,268	1,492	0	12,594	26,498	4,174
1920	47,849	33,866	19,710	419	12,412	3,013	9,682	5,403	1,838	0	16,568	25,820	6,199
1930	32,624	15,832	19,276	218	7,571	1,707	6,207	4,225	2,471	0	6,953	24,449	8,502
1931	26,406	16,423	17,513	94	6,787	1,766	5,296	4,193	2,265	0	7,958	28,813	6,855
1940	38,095	19,104	27,211	50	2,268	1,899	3,449	3,448	3,641	0	9,764	19,784	11,721
1950	77,953	32,830	28,141	262	4,307	9,781	1,459	4,934	6,914	0	9,957	77,189	26,269
1960	66,187	62,626	21,758	90	3,241	6,443	873	1,768	8,255	0	5,908	78,711	11,305
1961	58,251	69,991	17,228	36	2,654	5,385	533	1,386	7,002	0	8,896	86,158	9,496
1970	80,898	119,692	19,053	30	6,465	6,311	505	226	5,436	0	8,824	54,527	7,260

Northumberland

Year	Wheat	Barley	Oats	Rye	Beans and Peas	Potatoes	Turnips and Swedes	Mangolds	Cabbages, etc	Hops	Bare Fallow	Clover and Rotation Grass	Other Crops
1869	45,768	29,597	65,805	437	11,204	6,320	51,690	101	1,052	0	20,682	77,185	3,680
1871	41,716	35,693	63,636	517	10,546	6,848	52,111	351	1,091	4	18,459	91,006	4,066
1877	26,168	39,703	58,614	391	5,845	5,502	47,925	150	842	0	16,358	93,503	2,941
1885	17,699	38,184	56,318	124	6,240	5,230	44,706	146	814	0	11,476	90,731	2,495
1891	13,303	35,803	50,142	297	3,929	4,527	42,966	281	650	0	7,134	91,677	2,182
1900	6,776	34,837	44,342	95	2,477	5,041	38,259	577	611	0	3,681	76,657	1,973
1901	4,061	34,848	45,271	167	2,350	5,060	36,818	627	807	0	3,848	77,572	1,786
1910	5,037	31,306	41,165	112	1,505	5,497	34,265	569	764	0	2,225	66,233	1,512
1920	8,349	38,196	46,665	384	2,726	6,409	32,170	648	2,782	0	3,142	64,905	2,726
1930	4,301	12,958	33,497	27	723	4,469	22,518	351	667	0	854	65,761	2,121
1931	3,763	11,795	32,439	34	606	4,392	20,854	387	851	0	1,262	66,702	1,820
1940	15,189	13,375	43,164	8	1,668	5,954	15,566	1,722	2,832	0	625	57,302	4,339
1950	23,824	26,215	52,412	190	2,672	9,947	19,601	2,183	9,896	0	2,653	98,988	7,962
1960	14,773	44,853	37,833	37	238	6,270	16,997	1,630	7,871	0	860	119,730	4,598
1961	14,998	49,607	35,066	30	219	5,037	16,390	1,533	7,713	0	1,127	122,913	5,352
1970	26,351	111,247	20,313	2	147	4,369	12,322	316	4,584	0	1,960	104,122	3,450

Nottinghamshire

Year	Wheat	Barley	Oats	Rye	Beans and Peas	Potatoes	Turnips and Swedes	Mangolds	Cabbages, etc	Hops	Bare Fallow	Clover and Rotation Grass	Other Crops
1869	74,477	46,832	21,227	2,558	24,063	6,014	36,738	3,735	1,136	69	16,496	40,597	6,358
1871	73,911	47,661	20,695	2,486	23,048	7,202	36,586	5,004	1,385	60	12,016	50,960	7,442
1877	69,440	50,126	20,119	1,886	16,695	5,788	35,687	4,067	1,272	43	17,170	57,944	6,348
1885	52,649	39,634	27,400	1,847	13,517	7,023	34,595	3,873	1,117	30	16,304	61,707	5,188
1891	48,905	38,020	28,848	1,970	10,324	6,723	33,110	3,944	1,192	14	12,105	56,388	5,402
1900	39,067	38,073	34,522	2,192	9,809	8,007	30,527	6,249	1,921	0	8,418	54,257	5,373
1901	36,626	36,735	35,472	2,189	9,152	8,087	29,800	5,611	1,686	0	10,092	58,401	4,445
1910	35,708	32,304	37,985	2,079	8,046	5,946	28,604	7,138	1,680	0	10,143	48,856	3,363
1920	42,470	32,546	33,974	4,783	10,641	9,774	26,025	6,564	1,566	0	15,021	43,875	5,408
1930	37,022	15,917	36,238	3,207	9,240	7,373	17,641	5,127	1,337	0	7,311	40,533	18,579
1931	29,913	15,252	34,260	2,454	8,955	8,019	15,998	4,871	1,193	0	10,633	47,494	16,284
1940	44,208	16,426	42,038	871	1,672	8,402	11,360	4,500	2,438	0	11,157	31,959	19,607
1950	60,468	25,942	33,284	3,983	3,968	23,453	5,128	5,849	3,631	3	5,298	53,713	37,080
1960	51,027	74,564	27,334	478	1,889	12,674	2,668	2,892	4,509	0	3,269	62,626	28,322
1961	43,796	81,132	23,058	420	1,400	9,312	2,376	2,413	4,106	0	4,786	71,209	26,740
1970	57,360	124,358	9,971	193	2,607	11,855	717	400	1,373	0	6,333	43,028	31,351

Oxfordshire

Year	Wheat	Barley	Oats	Rye	Beans and Peas	Potatoes	Turnips and Swedes	Mangolds	Cabbages, etc	Hops	Bare Fallow	Clover and Rotation Grass	Other Crops
1869	63,054	51,447	24,028	254	29,456	1,535	41,360	4,271	1,734	0	6,944	34,581	7,501
1871	63,160	53,485	23,293	221	26,660	1,887	40,827	6,856	2,403	0	4,545	41,985	9,512
1877	60,847	52,208	26,304	328	26,609	1,558	37,124	5,243	2,003	0	7,971	45,019	11,180
1885	48,074	48,859	30,598	324	19,494	1,845	34,633	4,893	1,322	0	8,610	49,735	10,842
1891	44,732	45,859	29,745	258	15,195	2,159	30,023	4,922	1,445	0	6,312	47,864	9,254
1900	36,180	42,016	31,912	617	10,173	2,483	23,592	6,183	2,379	0	3,522	50,111	8,798
1901	34,540	41,886	30,387	680	9,518	2,953	23,169	5,448	1,985	0	4,912	52,184	8,163
1910	38,282	36,770	31,606	493	9,676	2,223	21,890	6,199	1,286	0	6,461	39,676	6,673
1920	46,088	37,101	32,942	932	7,515	3,215	15,440	5,650	1,846	0	15,776	34,649	7,576
1930	33,663	20,425	29,214	411	4,276	1,693	11,285	4,205	1,938	0	7,376	38,223	7,616
1931	28,937	18,575	26,409	312	4,107	1,884	9,495	3,876	1,773	0	8,363	42,973	6,773
1940	39,367	23,162	33,266	101	1,127	2,046	6,416	3,122	4,043	0	7,581	28,923	7,427
1950	52,741	44,064	28,395	299	2,296	6,413	2,987	3,432	6,244	0	7,690	63,474	19,468
1960	39,250	83,057	14,986	146	580	3,498	1,488	1,007	8,419	0	4,139	72,977	9,460
1961	32,626	85,607	11,182	45	587	2,764	1,312	738	7,562	2	7,729	77,024	8,453
1970	54,478	112,721	11,019	99	3,547	2,841	556	116	3,579	0	5,559	55,980	5,295

Rutland

Year	Wheat	Barley	Oats	Rye	Beans and Peas	Potatoes	Turnips and Swedes	Mangolds	Cabbages, etc	Hops	Bare Fallow	Clover and Rotation Grass	Other Crops
1869	10,598	10,256	3,749	27	3,275	257	6,360	332	60	0	2,213	3,940	794
1871	10,413	11,459	3,576	65	2,820	278	7,057	445	202	0	1,204	5,959	882
1877	10,288	10,629	3,588	31	2,262	184	6,193	530	77	0	2,796	6,317	728
1885	6,824	9,484	4,568	30	1,914	190	5,983	554	103	0	1,768	6,553	690
1891	6,151	10,084	3,617	11	1,399	163	5,875	659	136	0	1,330	6,621	561
1900	4,790	10,697	3,964	35	1,186	158	5,790	785	204	0	1,132	6,249	515
1901	4,991	9,579	3,632	41	1,378	214	5,365	728	264	0	1,201	6,358	458
1910	4,304	9,921	3,337	15	1,146	163	4,734	873	235	0	1,414	5,952	287
1920	4,522	11,342	2,863	16	1,404	349	4,733	741	257	0	2,279	5,196	1,155
1930	3,770	7,883	3,004	55	1,105	201	3,696	706	387	0	969	5,366	1,611
1931	3,927	7,726	2,542	15	959	238	3,142	684	371	0	913	6,480	1,269
1940	5,277	7,849	3,162	12	340	454	2,011	581	428	0	1,890	4,410	2,271
1950	13,245	10,830	3,052	73	1,060	3,731	770	774	1,635	0	1,543	8,616	6,119
1960	8,378	17,206	2,970	8	506	1,816	543	476	2,436	0	955	11,803	2,742
1961	7,818	17,839	2,610	4	486	1,339	331	430	2,233	0	1,404	13,108	2,374
1970	12,481	26,732	2,392	0	1,323	1,004	345	100	1,490	0	1,132	8,548	2,083

Shropshire

Year	Wheat	Barley	Oats	Rye	Beans and Peas	Potatoes	Turnips and Swedes	Mangolds	Cabbages, etc	Hops	Bare Fallow	Clover and Rotation Grass	Other Crops
1869	90,367	51,650	25,954	1,643	14,129	6,610	52,838	3,062	259	79	11,378	60,249	3,372
1871	85,976	55,609	26,218	2,540	13,487	6,942	52,186	5,768	379	93	9,173	79,567	4,269
1877	74,353	54,558	25,981	1,458	10,432	5,079	49,435	5,038	228	90	11,656	76,805	3,102
1885	53,161	53,300	34,445	848	8,331	6,874	47,119	4,355	198	103	6,978	71,470	2,558
1891	47,227	52,063	34,881	1,076	6,289	7,470	44,404	4,875	262	112	4,268	70,280	2,007
1900	32,219	53,848	40,969	990	4,564	6,694	37,231	9,135	793	138	1,873	71,149	1,450
1901	27,934	52,832	41,049	857	4,706	6,614	37,252	7,838	560	144	2,786	73,063	1,217
1910	29,405	44,625	42,887	577	3,283	4,507	32,661	11,113	488	103	1,122	59,751	917
1920	34,706	44,067	46,264	1,635	5,766	6,179	30,024	10,318	1,030	52	3,420	53,491	6,454
1930	17,523	13,828	40,397	357	1,734	5,059	16,632	7,143	1,094	21	1,047	55,454	24,614
1931	16,100	13,182	39,940	322	1,681	5,129	16,024	6,783	1,175	12	1,684	58,021	18,986
1940	31,214	17,268	52,068	152	1,029	6,536	10,324	5,925	2,483	11	1,075	46,314	28,990
1950	49,105	23,335	38,072	421	3,498	18,923	7,695	9,276	7,878	5	1,458	100,498	81,005
1960	42,277	53,074	23,419	193	356	12,521	6,192	4,985	10,297	14	1,042	144,972	37,967
1961	39,406	61,762	19,984	114	233	10,498	5,921	4,036	9,455	10	1,358	151,106	34,582
1970	46,539	112,338	19,824	100	1,238	12,789	4,400	913	5,480	22	2,296	125,884	33,945

Somerset

Year	Wheat	Barley	Oats	Rye	Beans and Peas	Potatoes	Turnips and Swedes	Mangolds	Cabbages, etc	Hops	Bare Fallow	Clover and Rotation Grass	Other Crops
1869	77,973	35,415	23,264	146	20,545	9,637	35,898	11,167	3,013	4	10,153	43,154	6,984
1871	74,951	36,062	22,098	317	18,771	11,788	36,184	12,765	3,663	0	6,824	65,759	7,698
1877	69,245	32,096	23,715	360	18,898	8,163	33,899	11,532	4,025	0	9,104	64,376	10,795
1885	49,199	27,934	24,783	164	12,925	7,517	30,891	10,867	3,282	0	5,434	58,863	9,653
1891	42,813	27,437	23,857	161	11,231	6,538	27,964	10,656	3,470	0	4,446	55,406	7,550
1900	32,329	28,593	27,266	535	8,610	4,997	23,154	11,957	4,412	0	2,615	50,139	5,272
1901	29,894	28,408	25,467	498	8,397	5,130	22,180	11,506	4,044	0	3,214	52,741	4,662
1910	30,637	20,437	26,853	289	8,259	3,781	20,139	12,815	3,512	0	2,446	38,139	4,272
1920	35,980	19,145	35,626	369	8,897	3,857	18,072	12,164	3,241	0	7,317	36,159	7,491
1930	16,499	11,667	20,986	175	4,909	2,611	11,763	8,481	3,157	0	2,341	34,021	27,486
1931	16,202	11,359	18,606	178	4,683	2,644	10,911	8,150	3,047	0	2,414	36,148	25,818
1940	28,531	16,839	31,396	62	1,401	3,737	9,914	6,806	4,675	0	2,851	25,374	28,430
1950	33,581	20,103	27,892	339	1,996	7,319	9,281	9,446	10,394	8	4,348	88,753	59,026
1960	19,826	39,491	13,310	193	501	5,053	6,618	3,938	17,989	0	2,965	132,013	25,800
1961	15,751	45,600	8,354	84	304	4,071	5,920	3,015	16,265	0	5,041	139,825	23,226
1970	29,166	68,408	9,161	116	1,261	4,699	3,655	695	7,255	0	3,211	131,843	14,078

Staffordshire

Year	Wheat	Barley	Oats	Rye	Beans and Peas	Potatoes	Turnips and Swedes	Mangolds	Cabbages, etc	Hops	Bare Fallow	Clover and Rotation Grass	Other Crops
1869	59,892	30,494	31,020	1,584	10,199	9,958	27,514	2,965	1,094	2	9,955	37,291	4,431
1871	55,808	31,809	30,078	1,979	9,232	9,991	26,703	4,742	1,137	0	7,773	52,220	4,140
1877	46,296	29,278	30,189	1,332	5,793	7,276	25,801	4,207	1,227	0	10,192	54,637	4,119
1885	33,444	22,759	33,231	1,065	5,184	9,966	25,335	3,713	1,433	0	7,074	48,740	3,766
1891	28,686	20,928	36,479	1,475	2,557	10,480	24,056	3,837	1,193	0	3,527	47,104	2,611
1900	22,798	16,987	37,522	1,613	1,700	11,465	16,944	6,758	2,102	0	1,716	45,509	2,301
1901	17,775	17,243	37,574	1,267	1,611	11,044	17,317	6,397	2,093	0	2,565	49,153	1,942
1910	21,676	13,002	37,904	1,177	1,043	9,907	16,457	8,402	2,051	0	1,360	37,080	1,348
1920	29,223	14,738	36,484	2,395	1,363	13,110	17,049	8,408	2,082	0	3,585	41,817	4,608
1930	14,913	3,849	33,708	685	715	11,575	9,574	5,910	2,253	0	1,878	37,744	11,966
1931	13,559	3,112	29,749	510	855	11,893	9,069	5,441	2,172	0	2,194	42,449	9,641
1940	28,123	3,765	39,028	324	212	12,547	5,830	4,811	2,527	0	1,436	30,231	13,889
1950	38,476	5,562	29,755	687	511	22,389	3,468	6,519	4,515	0	980	68,048	39,254
1960	32,111	28,450	16,476	157	60	14,104	1,966	2,780	5,712	0	1,598	91,274	17,294
1961	25,588	39,755	12,733	81	63	11,518	1,579	2,181	4,935	0	2,214	95,290	14,027
1970	30,446	64,682	8,529	32	958	12,265	817	437	2,384	0	2,463	73,001	16,885

Suffolk

Year	Wheat	Barley	Oats	Rye	Beans and Peas	Potatoes	Turnips and Swedes	Mangolds	Cabbages, etc	Hops	Bare Fallow	Clover and Rotation Grass	Other Crops
1869	155,452	137,288	17,691	7,765	78,425	2,217	62,755	37,301	2,542	165	20,957	57,743	23,637
1871	157,915	137,249	14,949	7,762	72,566	2,315	60,860	36,894	2,925	129	17,471	81,187	24,062
1877	148,255	145,150	16,727	6,943	70,701	2,068	56,888	36,261	2,982	78	23,898	84,672	24,640
1885	118,531	154,217	23,306	6,736	67,141	2,296	56,625	35,777	3,541	56	28,151	87,119	26,637
1891	125,603	146,321	22,219	4,930	58,959	2,233	53,778	34,831	3,825	20	28,334	96,365	16,917
1900	105,806	136,682	42,498	4,008	48,444	2,577	51,856	35,915	6,384	4	20,463	106,987	18,009
1901	99,601	134,971	44,002	4,388	48,110	2,877	51,834	34,806	5,127	4	23,492	108,251	17,641
1910	113,411	119,783	47,878	4,689	59,530	3,048	44,179	34,586	5,045	0	27,763	87,114	17,530
1920	100,541	121,942	59,553	9,380	57,943	7,011	38,087	26,851	5,337	0	37,640	78,815	32,202
1930	85,960	106,293	53,326	4,931	45,743	3,459	17,208	20,055	5,152	0	27,753	77,120	78,210
1931	77,381	114,530	49,549	3,794	39,458	4,091	17,009	18,621	5,016	0	35,063	89,392	60,631
1940	92,589	143,410	51,482	3,227	25,479	5,630	10,441	12,229	8,182	0	19,080	70,329	83,695
1950	103,643	161,318	54,862	6,288	17,065	12,558	2,342	12,236	11,435	2	8,881	70,417	116,952
1960	115,484	236,740	32,021	4,488	15,508	9,873	1,414	6,376	9,906	16	10,119	66,202	102,901
1961	88,513	254,602	29,352	4,908	12,682	8,055	1,075	5,319	9,272	12	13,617	82,274	98,895
1970	138,419	276,296	17,120	3,355	25,289	11,683	411	1,423	5,033	24	10,103	37,371	109,778

Surrey

Year	Wheat	Barley	Oats	Rye	Beans and Peas	Potatoes	Turnips and Swedes	Mangolds	Cabbages, etc	Hops	Bare Fallow	Clover and Rotation Grass	Other Crops
1869	45,594	17,471	26,391	1,561	9,946	3,615	19,844	7,409	1,868	2,209	12,934	21,978	8,499
1871	44,156	18,666	24,781	1,896	11,521	4,082	19,648	8,606	3,282	2,128	10,553	32,541	9,043
1877	41,305	16,701	27,580	1,557	9,821	4,252	17,901	8,656	2,542	2,329	12,203	30,511	11,231
1885	31,763	15,113	23,917	1,036	7,226	6,627	16,143	9,807	2,614	2,627	8,633	27,130	11,381
1891	27,539	12,245	23,967	771	5,890	5,935	13,133	8,478	2,199	1,955	8,483	24,722	9,851
1900	19,722	7,773	23,918	1,358	3,203	5,609	9,291	8,603	2,821	1,300	6,142	22,208	9,864
1901	18,125	8,429	21,943	1,481	3,162	5,770	9,026	7,719	2,703	1,232	7,536	23,715	9,240
1910	16,668	5,070	20,390	642	3,030	4,702	6,815	7,722	2,395	514	5,972	18,132	7,412
1920	18,897	5,101	21,520	1,485	2,457	6,949	6,830	6,258	2,513	172	7,146	18,640	8,692
1930	8,225	1,911	12,303	499	1,261	3,026	2,716	2,946	1,964	140	3,638	11,010	8,894
1931	6,677	1,785	10,669	296	1,135	3,146	2,499	2,634	1,852	146	4,059	11,558	8,419
1940	9,416	2,886	13,300	182	536	3,579	2,130	2,207	2,411	98	2,727	7,688	10,032
1950	17,435	7,271	17,109	700	765	5,691	784	2,317	3,987	120	4,918	33,532	25,285
1960	13,314	19,514	7,755	194	191	2,721	465	560	4,218	116	3,257	47,476	11,325
1961	10,202	21,340	4,956	86	68	2,196	271	394	3,606	116	4,221	50,167	10,472
1970	12,842	30,137	4,124	1	565	1,432	70	52	1,452	90	2,831	35,980	7,991

Sussex

Year	Wheat	Barley	Oats	Rye	Beans and Peas	Potatoes	Turnips and Swedes	Mangolds	Cabbages, etc	Hops	Bare Fallow	Clover and Rotation Grass	Other Crops
1869	104,815	23,602	65,450	504	22,811	3,574	34,642	8,070	8,630	9,613	27,811	52,992	18,111
1871	100,655	23,700	63,607	742	24,396	3,496	33,972	10,361	10,265	9,412	20,982	67,583	17,674
1877	93,790	20,767	68,587	817	20,699	2,740	30,678	12,214	10,822	11,057	20,919	72,189	21,075
1885	78,117	18,981	62,918	405	16,095	3,186	29,526	12,385	11,770	10,722	18,039	65,542	19,604
1891	71,676	15,121	63,429	319	15,111	3,082	27,170	12,585	11,355	7,150	16,263	64,098	14,628
1900	52,244	11,911	61,076	1,160	9,559	3,470	19,685	14,288	9,928	4,823	12,044	61,148	12,616
1901	49,939	12,099	58,378	1,375	8,466	3,695	20,152	13,852	9,404	4,800	12,826	61,130	11,925
1910	47,257	9,020	57,067	686	9,414	3,001	17,198	15,558	9,117	2,653	10,490	44,356	9,731
1920	52,899	9,077	63,521	1,770	10,971	5,721	15,243	14,983	9,185	1,788	14,792	43,355	14,378
1930	28,352	5,758	37,583	470	4,323	3,334	9,282	9,147	5,844	1,680	7,849	32,488	17,690
1931	26,354	5,583	34,413	296	3,774	3,468	8,541	8,461	5,153	1,453	8,287	30,727	17,157
1940	34,034	8,955	42,686	179	2,920	5,532	6,921	6,966	6,522	1,707	7,391	23,565	23,428
1950	54,888	22,796	49,649	837	5,684	10,719	2,564	6,479	11,191	2,060	9,947	85,604	57,542
1960	47,182	68,138	27,777	82	439	4,611	1,329	1,890	14,703	1,859	5,074	142,612	23,369
1961	37,547	74,515	19,746	31	176	3,656	1,326	1,414	13,386	1,784	8,413	147,753	20,797
1970	58,808	100,064	18,503	46	4,672	4,491	459	208	6,990	1,463	5,092	115,878	17,082

Warwickshire

Year	Wheat	Barley	Oats	Rye	Beans and Peas	Potatoes	Turnips and Swedes	Mangolds	Cabbages, etc	Hops	Bare Fallow	Clover and Rotation Grass	Other Crops
1869	79,847	26,876	14,474	406	37,262	2,656	19,702	3,782	592	3	14,262	27,243	5,539
1871	77,610	29,311	14,209	470	36,691	3,707	19,921	5,692	703	2	9,099	42,465	6,674
1877	67,903	28,026	16,810	407	30,277	2,189	18,205	4,365	782	0	17,133	44,027	5,804
1885	47,473	18,828	23,237	177	20,711	4,531	17,979	3,993	1,042	0	14,430	41,857	4,240
1891	44,036	16,805	23,782	315	16,765	5,616	15,501	3,983	1,057	0	8,227	34,342	4,055
1900	36,927	13,383	29,558	602	12,043	6,744	10,480	6,342	2,096	0	6,115	33,174	3,237
1901	32,140	14,097	29,536	445	12,211	6,929	10,547	6,132	1,766	0	7,297	34,939	3,138
1910	30,188	11,657	27,826	360	10,380	6,053	9,559	7,788	1,393	0	7,071	27,194	2,414
1920	43,635	12,603	24,689	564	10,670	8,008	8,379	6,663	1,484	0	11,576	29,480	4,831
1930	22,011	4,280	22,469	374	4,861	5,109	4,845	4,836	1,493	0	3,593	28,631	9,860
1931	17,668	3,781	20,455	147	4,501	5,603	4,273	4,400	1,265	0	5,333	31,964	9,222
1940	28,061	5,236	28,970	210	1,941	5,645	2,885	3,843	2,441	0	6,204	20,920	14,625
1950	73,551	13,724	27,412	414	4,057	13,352	1,325	5,116	4,199	0	6,978	81,029	42,608
1960	57,016	39,408	24,805	125	698	8,552	895	1,835	5,765	0	5,996	97,258	15,119
1961	45,276	47,519	19,090	36	495	6,299	736	1,304	5,090	0	11,642	104,780	12,419
1970	61,538	83,047	18,068	21	3,713	7,794	292	156	2,242	0	7,735	71,187	10,818

Westmorland

Year	Wheat	Barley	Oats	Rye	Beans and Peas	Potatoes	Turnips and Swedes	Mangolds	Cabbages, etc	Hops	Bare Fallow	Clover and Rotation Grass	Other Crops
1869	3,044	3,095	16,809	127	111	2,113	8,648	147	225	0	1,143	16,200	171
1871	2,273	3,185	17,089	104	183	2,051	8,596	259	316	0	1,170	23,583	214
1877	1,398	2,641	16,223	95	114	1,701	7,998	333	191	0	718	15,380	187
1885	660	1,326	16,784	101	76	1,752	7,623	214	97	0	263	15,798	163
1891	390	1,205	16,175	104	17	1,819	7,636	237	169	0	146	16,186	177
1900	169	794	14,995	61	45	1,440	6,377	858	92	0	62	16,899	127
1901	130	775	14,508	73	35	1,440	5,955	920	89	0	64	16,077	115
1910	97	452	13,799	42	14	1,181	5,754	608	71	0	46	14,935	144
1920	339	1,303	18,048	35	21	1,767	7,006	621	365	0	205	17,302	1,108
1930	46	141	10,579	7	21	800	4,792	363	83	0	32	16,422	836
1931	45	66	10,159	7	13	826	4,640	377	106	0	61	15,579	924
1940	318	266	16,377	2	114	1,014	3,363	617	557	0	47	14,789	1,246
1950	697	256	15,862	3	68	1,836	4,733	721	1,063	0	326	26,073	2,861
1960	461	759	7,570	0	0	833	2,546	324	1,983	0	94	28,585	1,159
1961	514	1,376	6,691	0	0	658	2,354	262	1,838	0	86	31,088	1,043
1970	409	6,846	1,290	18	0	439	1,423	54	599	0	129	26,331	1,721

Wiltshire

Year	Wheat	Barley	Oats	Rye	Beans and Peas	Potatoes	Turnips and Swedes	Mangolds	Cabbages, etc	Hops	Bare Fallow	Clover and Rotation Grass	Other Crops
1869	102,770	65,071	32,830	2,068	22,563	3,853	68,616	4,255	8,437	1	17,879	66,589	21,518
1871	97,786	66,500	32,330	2,728	22,225	4,428	65,209	6,587	9,541	0	13,362	80,572	22,424
1877	92,981	67,262	37,199	2,915	22,100	3,039	56,066	5,108	11,684	0	14,897	82,855	27,479
1885	72,855	54,902	43,343	1,317	12,489	3,027	56,335	5,530	10,244	0	12,349	80,020	24,743
1891	67,011	48,085	43,256	1,528	9,870	3,022	53,090	5,872	10,644	0	9,021	79,560	22,123
1900	53,507	40,030	46,333	2,431	4,405	2,960	38,496	7,148	12,105	0	8,238	74,213	19,659
1901	50,177	39,606	45,434	2,797	4,717	3,023	37,262	6,867	11,624	0	8,304	77,952	18,479
1910	54,553	25,818	46,139	1,536	3,723	2,215	35,748	9,238	9,686	0	9,725	59,938	14,754
1920	57,189	30,918	51,032	3,362	2,537	3,239	20,650	7,894	6,497	0	25,429	53,486	13,965
1930	35,657	13,508	37,619	1,250	2,116	1,677	13,414	5,413	7,144	0	11,067	47,062	12,716
1931	32,350	13,261	33,514	972	1,696	1,767	11,798	5,116	5,876	0	12,241	49,081	11,384
1940	45,224	19,542	42,766	384	403	1,891	8,030	3,387	6,630	0	13,679	38,033	11,321
1950	67,442	49,218	26,680	697	1,712	7,212	4,097	4,407	12,493	0	13,770	98,468	36,124
1960	47,491	114,974	13,600	194	79	2,515	2,544	883	19,515	0	6,312	130,680	8,603
1961	42,507	119,588	10,408	63	107	1,918	2,127	624	16,696	0	8,639	142,551	6,900
1970	75,799	160,198	10,271	831	2,682	1,892	548	60	8,342	0	6,744	116,035	4,294

Worcestershire

Year	Wheat	Barley	Oats	Rye	Beans and Peas	Potatoes	Turnips and Swedes	Mangolds	Cabbages, etc	Hops	Bare Fallow	Clover and Rotation Grass	Other Crops
1869	71,926	18,524	6,971	771	31,985	5,991	15,863	3,392	587	2,522	11,004	23,127	7,752
1871	68,817	21,233	7,484	1,140	32,465	6,973	15,445	4,720	772	2,672	8,156	34,217	8,682
1877	62,037	19,826	8,811	808	29,189	4,781	13,902	3,299	699	2,536	14,548	32,725	8,589
1885	45,494	15,213	11,591	449	22,487	7,357	13,478	3,411	987	2,910	13,174	34,482	8,285
1891	41,145	12,385	13,146	549	21,367	7,757	12,184	3,643	901	3,280	8,232	30,049	9,511
1900	31,009	9,549	19,259	943	17,950	7,458	7,650	5,224	1,915	3,964	5,048	28,136	10,144
1901	27,009	9,593	19,955	862	18,143	6,988	7,971	4,944	1,865	4,029	6,475	29,334	9,398
1910	26,613	6,630	19,662	518	17,708	6,105	7,178	6,274	1,666	3,109	5,700	19,358	10,338
1920	31,981	5,759	18,202	913	17,709	8,424	6,363	4,778	1,363	1,667	12,766	19,617	10,994
1930	14,475	1,748	15,132	349	11,618	4,264	2,937	3,370	920	1,732	3,673	16,799	36,743
1931	11,047	1,463	13,548	229	11,229	4,479	2,728	2,948	833	1,811	5,197	18,160	36,275
1940	19,008	3,569	19,436	220	1,816	5,240	2,034	2,333	1,408	1,834	4,772	10,873	47,916
1950	41,760	7,928	22,134	351	3,751	10,662	922	3,654	2,467	2,120	5,405	39,579	67,295
1960	27,938	19,890	12,939	170	1,089	6,105	868	1,790	3,497	2,046	6,332	52,027	48,203
1961	24,614	23,296	10,243	56	634	4,766	766	1,330	3,372	2,016	10,803	53,615	44,143
1970	31,631	44,640	8,241	12	1,949	4,593	402	269	1,555	1,958	7,985	38,769	37,253

Yorkshire: East Riding

Year	Wheat	Barley	Oats	Rye	Beans and Peas	Potatoes	Turnips and Swedes	Mangolds	Cabbages, etc	Hops	Bare Fallow	Clover and Rotation Grass	Other Crops
1869	130,774	48,123	78,607	2,472	28,517	12,065	76,180	2,933	9,564	0	24,141	77,363	11,577
1871	116,139	61,595	72,632	2,368	28,814	12,112	76,182	4,237	8,832	24	17,670	87,419	11,069
1877	100,931	77,848	73,126	1,926	24,437	10,398	75,979	4,729	9,542	0	21,189	87,922	11,877
1885	74,050	73,278	92,432	1,940	20,434	11,588	75,556	5,044	9,002	0	18,428	86,217	10,296
1891	72,892	66,951	95,954	1,633	14,935	12,216	74,878	4,865	7,683	0	15,275	90,423	8,687
1900	64,254	73,623	95,231	1,907	12,485	12,851	73,689	8,536	6,418	0	11,062	92,232	8,846
1901	60,204	73,202	95,727	2,250	11,786	13,435	72,967	8,366	5,688	0	12,275	96,525	8,137
1910	64,772	76,126	88,958	3,243	10,105	11,515	74,608	9,448	4,520	0	11,183	88,606	6,520
1920	61,275	91,896	85,251	8,150	17,127	14,120	71,972	7,738	5,597	0	22,035	70,400	10,711
1930	70,671	51,962	86,252	5,033	12,757	11,395	65,949	6,886	4,597	0	12,237	84,419	18,665
1931	67,673	55,994	82,051	3,597	10,746	11,885	61,600	6,369	4,270	0	15,491	88,832	15,931
1940	84,504	69,388	83,700	2,315	4,766	12,972	51,031	7,016	5,567	0	11,864	71,831	24,940
1950	92,665	87,102	55,766	6,076	9,028	24,172	36,380	10,328	6,543	0	8,887	96,276	54,308
1960	76,631	158,122	44,424	809	5,657	19,952	25,710	6,938	9,437	0	3,857	111,260	31,919
1961	69,293	169,896	38,936	1,151	5,919	16,492	24,221	5,861	8,565	3	5,491	123,777	28,198
1970	99,730	243,273	24,973	138	4,749	18,652	11,981	1,555	3,673	0	5,166	75,100	33,963

Yorkshire: North Riding

Year	Wheat	Barley	Oats	Rye	Beans and Peas	Potatoes	Turnips and Swedes	Mangolds	Cabbages, etc	Hops	Bare Fallow	Clover and Rotation Grass	Other Crops
1869	86,686	55,545	69,031	1,689	17,131	12,826	57,984	983	3,877	6	33,458	56,960	4,677
1871	74,374	69,894	66,567	1,453	17,474	13,243	58,223	1,935	4,686	8	28,937	81,210	4,608
1877	57,526	80,086	66,733	1,338	12,882	8,686	59,630	2,195	4,691	0	29,918	75,387	4,424
1885	46,875	69,951	77,346	1,377	10,721	10,229	58,386	2,106	3,654	0	26,923	72,714	4,449
1891	36,913	72,564	73,477	1,147	8,039	10,470	56,726	2,360	3,506	0	20,220	73,914	3,327
1900	27,200	76,388	73,179	1,290	5,570	12,954	51,598	6,721	3,190	0	13,698	71,918	3,051
1901	18,745	78,368	75,117	1,329	5,272	13,157	50,823	6,674	2,906	0	14,523	75,763	2,688
1910	23,888	75,801	70,221	2,440	3,469	11,421	50,917	6,683	2,220	0	12,085	67,488	2,406
1920	26,454	89,248	75,901	4,768	6,259	15,119	48,580	6,328	2,859	0	16,973	56,315	7,821
1930	27,505	48,612	68,969	2,646	2,421	12,758	39,911	4,838	2,066	0	10,688	71,805	12,980
1931	22,690	49,417	66,130	1,880	2,605	13,069	37,769	4,886	1,783	0	11,844	76,626	10,489
1940	41,905	56,983	73,922	1,160	2,577	13,503	29,274	6,615	3,990	0	7,589	52,540	17,736
1950	59,360	69,603	70,269	4,370	5,048	27,958	24,185	9,776	5,495	0	8,765	89,603	35,449
1960	33,533	114,692	58,374	318	815	20,102	18,002	7,136	9,601	0	4,721	128,333	22,170
1961	26,444	125,237	51,291	275	568	15,911	17,342	6,046	9,313	0	6,435	139,637	20,014
1970	42,588	208,350	20,562	47	1,233	21,972	9,120	2,036	5,837	0	6,790	112,460	19,229

Yorkshire: West Riding

Year	Wheat	Barley	Oats	Rye	Beans and Peas	Potatoes	Turnips and Swedes	Mangolds	Cabbages, etc	Hops	Bare Fallow	Clover and Rotation Grass	Other Crops
1869	114,119	66,281	60,859	2,171	24,724	28,778	62,221	1,819	2,683	0	19,528	59,034	13,216
1871	103,910	75,442	56,837	2,254	23,929	30,307	58,202	3,959	2,810	3	16,084	98,295	12,013
1877	86,795	77,398	54,090	1,455	13,358	24,162	58,993	2,516	2,717	0	20,267	92,807	10,515
1885	69,213	66,935	69,036	1,972	13,815	23,158	62,118	3,060	2,292	0	16,208	82,969	9,669
1891	58,614	59,721	75,081	1,698	10,309	22,483	59,098	2,827	2,047	0	11,482	74,430	8,369
1900	47,388	58,656	75,900	2,005	8,297	25,491	52,586	7,801	2,410	0	6,992	74,463	8,149
1901	42,092	57,483	75,874	2,136	6,997	27,711	50,647	7,488	2,066	0	8,435	80,372	7,734
1910	47,420	51,711	79,212	2,385	5,052	24,727	50,195	7,603	1,783	0	7,293	65,068	8,484
1920	52,236	60,121	87,842	6,476	5,994	32,605	50,971	7,293	2,588	0	12,721	65,336	13,558
1930	53,103	22,677	79,788	4,209	10,005	27,198	35,476	5,565	1,203	0	7,074	55,395	18,849
1931	47,991	21,208	74,902	2,991	10,722	27,911	32,706	5,793	1,133	0	10,386	63,370	15,619
1940	69,412	21,200	87,826	1,773	907	29,570	24,173	7,267	5,113	0	7,841	43,572	34,355
1950	88,476	33,286	78,914	7,686	2,334	46,517	17,978	12,527	5,090	0	6,890	81,335	57,122
1960	72,882	90,919	56,127	1,222	878	32,359	10,213	7,106	9,080	0	6,581	98,987	42,780
1961	60,780	106,800	47,692	1,090	711	27,421	9,343	6,002	8,309	0	9,227	113,362	39,248
1970	70,907	171,631	21,131	14	1,553	29,946	4,060	1,673	2,978	0	8,994	63,635	40,663