

A randomised controlled trial of regular early specialist palliative care on quality of life in malignant pleural mesothelioma – ‘RESPECT-Meso’

Fraser Brims^{1,2,3}, Samal Gunatilake⁴, Iain Lawrie⁵, Laura Marshall⁶, Carole Fogg^{6,7}, Cathy Qi⁸, Lorraine Creech⁹, Nicola Holtom¹⁰, Stephanie Killick¹¹, Bernard Yung¹², David Cooper¹³, Louise Staddon¹⁴, Peter Cook¹⁵, Elizabeth Fuller¹⁶, Julie Walther¹⁷, Claire Plunkett¹⁸, Andrew Bates¹⁹, Carolyn Mackinlay²⁰, Anil Tandon²¹, Nick Maskell²², Karen Forbes²³, Najib Rahman^{24,25}, Stephen Gerry⁸, Anoop Chauhan^{4,6,7}
on behalf of the RESPECT-Meso investigators

- 1 Department of Respiratory Medicine, Sir Charles Gairdner Hospital, Nedlands, WA, Australia
- 2 Institute for Respiratory Health, Perth, Australia.
- 3 Curtin Medical School, Curtin University, Perth, WA, Australia
- 4 Department of Respiratory Medicine, Portsmouth Hospitals NHS Trust, Portsmouth, UK
- 5 Department of Palliative Medicine, North Manchester General Hospital, Manchester, UK
- 6 Research & Innovation Department, Portsmouth Hospitals NHS Trust, Portsmouth, UK
- 7 School of Health Sciences and Social Work, University of Portsmouth, Portsmouth, UK
- 8 Centre for Statistics in Medicine, University of Oxford, Oxford, UK
- 9 University Hospital of South Manchester, Manchester, UK
- 10 Norfolk and Norwich University Hospitals NHS Foundation Trust, Norwich, UK
- 11 Hampshire Hospitals NHS Foundation Trust, Basingstoke, UK
- 12 Basildon and Thurrock University Hospitals NHS Foundation Trust, Basildon, UK
- 13 Northumbria Healthcare NHS Foundation Trust, Newcastle upon Tyne, UK
- 14 North Bristol NHS Trust, Bristol, UK
- 15 County Durham and Darlington NHS Foundation Trust, Darlington, UK
- 16 South Tyneside NHS Foundation Trust, South Shields, UK
- 17 Taunton and Somerset NHS Foundation Trust, Taunton, UK
- 18 Mid Essex Hospital Services NHS Trust, Chelmsford, UK
- 19 University Hospital Southampton NHS Foundation Trust, Southampton, UK
- 20 Great Western Hospitals NHS Foundation Trust, Swindon, UK
- 21 Department of Palliative Care, Sir Charles Gairdner Hospital, Nedlands, WA, Australia
- 22 Department of Respiratory Medicine, University of Bristol, Bristol, UK
- 23 Department of Palliative Medicine, University of Bristol, Bristol, UK
- 24 Oxford Respiratory Trials Unit, University of Oxford, Oxford, UK
- 25 National Institute for Health Research Oxford Biomedical Research Centre, Oxford, UK

Corresponding Author:

Prof Fraser Brims, Curtin Medical School, Curtin University, Kent Street, Bentley, GPO Box U1987
Perth, Western Australia 6856. Email: Fraser.Brim@curtin.edu.au

Manuscript word count: 3403

Abstract word count: 250

ABSTRACT

Purpose

Malignant pleural mesothelioma (MPM) has a high symptom burden and poor survival. Evidence from other cancer types suggests some benefit in health-related quality of life (HRQoL) with early specialist palliative care (SPC) integrated with oncological services, but the certainty of evidence is low.

Methods

We performed a multicentre, randomised, parallel group controlled trial comparing early referral to SPC versus standard care across 19 hospital sites in the United Kingdom and one large site in Western Australia. Participants had newly diagnosed MPM; main carers were additionally recruited.

Intervention: review by SPC within three weeks of allocation and every four weeks throughout the study. HRQoL was assessed at baseline and every four weeks with the EORTC QLQ-C30 questionnaire. Primary outcome: change in EORTC C30 Global Health Status (GHS) 12 weeks after randomisation.

Results

Between April 2014 and October 2016, 174 participants were randomised. There was no significant between group difference in HRQoL score at 12 weeks (mean difference 1.8 (95% CI: -4.9 to 8.5; $p=0.59$)). HRQoL did not differ at 24 weeks (mean difference -2.0 (95% CI: -8.6 to 4.6; $p=0.54$)). There was no difference in depression/anxiety scores at 12 or 24 weeks. In carers there was no difference in HRQoL or mood at 12 or 24 weeks, although there was a consistent preference for care, favouring the intervention arm.

Conclusion

There is no role for routine referral to SPC soon after diagnosis of MPM for patients who are cared for in centres with good access to SPC when required.

Trial Registration

This study was registered with ISRCTN, number 18955704

What is the key question?

Does regular early specialist palliative care soon after the diagnosis of malignant pleural mesothelioma (MPM) lead an improved health related quality of life, when compared to standard care alone?

What is the bottom line?

Health related quality of life did not differ in patients with MPM receiving regular early SPC compared to standard care and there was no difference in anxiety/depression scores or survival.

Why read on?

This finding is in contrast to other studies of other cancer types and health care systems. Patients who are cared for in specialist centres with dedicated nurse specialists may be having their early holistic needs met.

INTRODUCTION

Mesothelioma is a malignancy of mesothelial cells caused by exposure to asbestos fibres. It occurs most frequently in the pleura but may affect the peritoneum.^{1 2} Patients with mesothelioma have a high burden of symptoms^{3 4} and median survival is less than one year.⁵ The United Kingdom (UK) and Australia have some of the highest death rates in the world from mesothelioma.^{6 7} The global burden of mesothelioma largely reflects historic industrial utilization of asbestos throughout the last century. While many estimates suggest that developed countries are probably approaching the peak of mesothelioma incidence now, the continuing presence of asbestos within the built environment is likely to lead to continuing cases of mesothelioma for decades to come.

The treatment of mesothelioma remains a significant challenge. Treatment includes combination chemotherapy with cisplatin (or carboplatin) and pemetrexed, which confers a 2-3 month improvement in survival.⁸ There is increasing interest in immunotherapy,⁹ however, to date there is no clear role for this; surgery remains highly controversial with no quality trial data to inform clinical practice.¹⁰

Specialist palliative care (SPC) is the active, total care of patients with advanced, progressive malignant and non-malignant life-limiting illnesses,¹¹ and those who care for them. SPC involves the management of physical symptoms and is also concerned with the provision of psychological, social and spiritual support. The fundamental aim of SPC is to contribute to achievement of the best quality of life possible for patients and their families at any time between diagnosis and death. A recent Cochrane review examining early palliative care in the context of advanced cancer¹² included seven randomised studies (five examining mixed cancer types, one pancreatic cancer and one non-small cell lung cancer (NSCLC)).¹³⁻¹⁹ The review concluded that there is evidence of a small increase in HRQoL with early integrated SPC provision, but the level of certainty of current evidence is low to very low. A more recent single centre randomised study of mixed advanced tumour types also reported a small to moderate improvement in HRQoL.²⁰

The aim of this study was to examine the effect of regular early SPC in combination with current standard care on HRQoL in patients with malignant pleural mesothelioma (MPM) and their carers compared to standard care alone.

METHODS

Trial design

We performed a multicentre, randomised, non-blinded, parallel group controlled trial comparing early referral to regular SPC versus standard care. The protocol has been published in detail previously.²¹

Setting

There were 19 recruiting secondary and tertiary hospital sites in the UK and one large tertiary site in Western Australia (WA).

Participants

The inclusion and exclusion criteria are listed in table 1. All potential participants were screened for eligibility at specialist thoracic cancer multidisciplinary team (MDT) meetings. Participants were encouraged to nominate a main carer for inclusion in the study, although those who did not were still eligible.

Randomisation and blinding

Following completion of the baseline assessments, eligible patients and their carers were randomised using minimisation with a random element in a 1:1 ratio between the intervention and control groups using an automated, centralised randomisation database, managed by the Oxford Respiratory Trials Unit (ORTU), Oxford, UK. Minimisation was performed according to: centre, plan for chemotherapy (yes/no), ECOG PS (0 or 1) and histological sub-type (epithelioid versus non-epithelioid (biphasic, sarcomatoid, not defined)). Due to the nature of the intervention it was not possible to blind participants or the immediate research team to the allocated intervention.

Intervention

Participants randomised to regular early SPC were reviewed by a palliative care physician within three weeks of allocation with carers encouraged to accompany the participants. SPC visits continued every four weeks (within +/- 7 days) for at least 24 weeks, until death or end of trial. To ensure a standard approach to SPC consultations across different centres, we used the Sheffield Profile for Assessment and

Referral to Care (SPARC) tool²² and the revised Edmonton Symptom Assessment System (ESAS-r)²³ at initial consultations for all participants. Therefore, each SPC consultation included an assessment of the participant's physical, psychological, social and spiritual needs, with provision of additional treatments and referral to additional support services as required.

Control arm

Control group participants received all appropriate, routinely provided treatment for MPM currently available in the UK and Australia, with no treatment withheld. All patients were discussed at a specialist MDT (with SPC representation) with a consensus for a treatment plan. There is usually initial frequent contact with the patients and carers, about symptom management, advice on potential legal compensation and preparation for chemotherapy. All recruiting centres had a dedicated thoracic cancer or mesothelioma specialist nurse as part of the clinical team during the study. The referral of participants in the control group to SPC was at the discretion of the medical team(s) based on clinical need.

Outcomes

Primary aim

The primary aim was to determine if regular early SPC in newly diagnosed MPM patients resulted in improved HRQoL 12 weeks after randomisation, as compared to standard care. HRQoL was measured using the global health status (GHS) subscale of the European Organization for Research and Treatment of Cancer (EORTC) Quality of Life questionnaire Core 30 (QLQC30), with a higher score indicating a better HRQoL. This questionnaire has been validated in patients with MPM²⁴ and used in other recent MPM studies.^{25 26}

Secondary aims

The secondary aims included: participant HRQoL at 24 weeks (using the EORTC QLQC30); participant symptoms using the EORTC QLQ LC-13 lung cancer module supplement; participant mood at 12 and 24 weeks and overall survival; primary caregiver's HRQoL, mood and satisfaction with care at 12 and 24 weeks, and additionally at 24 weeks following patient death.

Caregiver HRQoL was assessed using the 1-week recall 36-Item Short Form Health Survey (SF-36v2). The FAMCARE-2 questionnaire has sound psychometric properties and measures family/carers

satisfaction with end-of-life care.²⁷ Mood was assessed using the 12-item General Health Questionnaire (GHQ-12), a widely used measure for screening for psychiatric morbidity in adults.²⁸ The study visit schedule is presented in the online supplement.

Sample size

With the assumption of a population mean of 55 and a common standard deviation of 22 in GHS/HRQoL for mesothelioma patients,²⁴ we estimated that a sample size of 78 patients in each arm was required to detect a 10-point difference in the mean scores between the two groups, with a power of 90% at a 5% two-sided significance level, assuming an association between baseline and follow-up GHS of $R^2=0.25$. With an estimated 10% dropout before the primary endpoint at 12 weeks, the required sample size was estimated to be 174 participants.

Statistical methods

The primary analysis of the 12-week primary outcome was based on the intention-to-treat approach (i.e. all patients analysed according to the group to which they were randomised) using a linear regression model adjusting for baseline (i.e. analysis of covariance (ANCOVA)), resulting in an adjusted mean difference in global health status score between randomised groups. We also performed the same linear regression additionally adjusting for the minimisation variables (centre, plan for chemotherapy, ECOG performance status and histological sub-type). We hypothesised that some data would be missing at 12 weeks due to early mortality, and QoL may be associated with survival, so analysing QoL on its own may have led to bias. Therefore, we additionally used a joint modelling approach combining linear mixed effects models for repeated measurements and Cox models for censored survival outcomes.²⁹ The model incorporated all follow-up measurements of the outcome (i.e. at 4, 8, 12, 16, 20 and 24 weeks) and survival time (with surviving patients censored at their 24-week visit or date of last known contact if they dropped out before the 24-week visit). Covariates of the mixed effects submodel were baseline measurement of the outcome, treatment group, measurement time point and a treatment group-measurement time point interaction.

For all patient reported secondary outcomes, ANCOVA models were used, as per the analysis of the primary outcome, as described above. Median survival times were obtained from the Kaplan–Meier product-limit estimate of the survivor function. Patients who were alive at the end of the trial were

censored at their last known date of contact. A Cox proportional hazards model was used to assess the effect of early SPC compared to standard care on survival with treatment group as the only covariate in the model.

Per-protocol analysis consisted of those randomised participants who had at least one post baseline GHS score, additionally for those randomised to SPC: completed all scheduled monthly SPC visits within the specified +/- 7 day window prior to the primary time point. Pre-specified subgroup analyses comparing the EORTC C30 GHS at 12 and 24 weeks were performed on the following subgroups: neutrophil/lymphocyte ratio (NLR <5/≥5), International Association for Study of Lung Cancer Mesothelioma radiological stage (1 to 4),³⁰ country of recruitment (UK/Australia), age at recruitment (<75/≥75 years), baseline ECOG PS (0/1), nominated carer at recruitment (yes/no). For each subgroup, a linear regression was performed for the GHS score adjusting for the baseline GHS score, treatment group, subgroup and the subgroup-treatment group interaction for week 12 and week 24 separately. Statistical analyses were performed using Stata version 15.1 (StataCorp, College Station, TX) at the Centre for Statistics in Medicine, University of Oxford.

Ethics and governance

Ethical approval for this study was granted by the National Research Ethics Service (NRES) Committee, London (Hampstead, UK), reference 12/LO/0078. This study was registered with ISRCTN, number 18955704.

RESULTS

From April 2014 to October 2016 we assessed 687 potential participants for eligibility and 174 participants were randomised and included in the intention to treat population (figure 1). At 12 weeks, 157 (90.2%) participants were followed-up, and 135 (77.6%) at 24 weeks. There were 8 withdrawals and 31 deaths during the study period. Baseline characteristics were well balanced between the groups (table 2). The median follow-up (from randomisation to date of last known contact) was 41.1 (interquartile range 25.1-61.9) weeks.

In addition, 145 main carers were recruited, 73 to the intervention group and 72 to the control group. At 12 weeks after randomisation, 130 (89.7%) remained in the study, 109 (75.2%) remained at 24-weeks (online supplement figure 1). The characteristics of those participants contributing to the primary outcome at 12 weeks are presented in online supplement table 5; participants without the primary outcome data available were older and had more sarcomatoid containing histology.

Adherence to the intervention

In the intervention arm, 84 (96.6%) participants completed at least one SPC visit before 12 weeks with 68 (78.2%) completing all three visits. 29 (33.3%) of the intervention group had at least 1 SPC visit falling outside of the +/- 7 day window. At 12 weeks after randomisation, 15 (17.2%) participants in the control arm had been referred to and seen by SPC. By week 24, 30 (34.5%) participants in the control arm had been referred to SPC. At 24 weeks after randomisation, 31 (17.8%) participants had died and 93 (53.4%) had died at last point of contact (end of trial) with a median survival of 54.6 (95% CI 46.4 to 72.9) weeks.

Primary outcome

There was no statistically significant between group difference in the mean score of the EORTC QLQ-C30 GHS at 12 weeks after randomisation (table 3).

Secondary outcomes

The data for secondary analyses for patients is provided in table 3 and presented in figure 2. The association parameter from the joint model applied to the GHS score and survival data was -0.11 (95% CI: -0.16, -0.06, $p < 0.01$), which implied a negative association between the GHS score and death times (i.e. the lower the score, the higher the chance of death). However, results remained consistent with the primary analysis i.e. the treatment effect estimated at each 4-week time point demonstrated no evidence of a significant difference between groups at any time. Symptom burden assessed using the EORTC QLQ LC-13 at 12 weeks after randomisation also had no significant between group differences (see online supplement).

Survival

30 (17.2%) participants died within 24 weeks of randomisation. There was no mortality difference between the groups with a Cox proportional hazards regression analysis demonstrating a hazard ratio (HR) of 1.1 (95% CI 0.6, 2.3); $p=0.74$ and log rank test (chi-square (1) = 0.11; $p=0.74$). Throughout the duration of the study, 93 (53.4%) participants died. Again, there was no mortality difference between the groups with a Cox proportional hazards regression HR of 1.2 (95% CI 0.8, 1.7); $p=0.50$ and log rank test (chi-square (1) = 0.46; $p=0.50$: table 3 and online supplement figure 2).

Outcomes for carers

Data for the carer reported outcomes are presented in table 4. There was no evidence of a statistically significant difference in the physical or mental component measures of the SF-36 between treatment groups at any time point. The GHQ-12 score differed between the treatment groups at week 24, favouring a positive outcome on the intervention arm. FAMCARE-2 scores were significantly higher (better) in the intervention arm at week 12 and week 24, p -values derived using non-parametric comparison were in agreement with this conclusion. At 24-weeks post-bereavement the mean difference adjusted for baseline still favoured the intervention arm, although numbers were small in each arm.

Protocol deviations and harms

One participant was randomised to the intervention arm in error as they were ineligible and were withdrawn. One participant in the intervention arm was unable to attend the SPC clinic appointments. Nine SAEs were reported during the study in five patients; all SAEs related to clinical decline and none were related to the intervention.

Pre-specified subgroup analyses

There were no statistically significant between-group differences in the EORTC C30 GHS observed within any of the pre-specified subgroups (see online supplement).

DISCUSSION

The RESPECT-Meso trial demonstrates that for patients with MPM with good performance status, routine referral to SPC soon after diagnosis does not confer any benefit in HRQoL and/or mood. This is the largest randomised controlled trial to examine this question in patients with mesothelioma. This

study suggests strongly that current standard palliative management in the UK and Australia is adequately meeting the holistic needs of patients early in the disease trajectory of mesothelioma.

We have considered if the study design or conduct may have led to a type II error, missing a real effect of the intervention. Dropout (from lost to follow up, withdrawal and death) before the primary outcome at 12 weeks after randomisation was as anticipated at 17 (9.8%) and data completeness for the primary outcome was good, thus, it is unlikely this study was underpowered. As anticipated in this pragmatic study, there was some dilution of effect from the intervention with 19 (21.8%) of the intervention group not completing all SPC visits and 15 (17.2%) of the standard care arm having received SPC review before the 12-week outcome. The primary outcome measure is a well validated and accepted measure for mesothelioma HRQoL and our baseline estimates of HRQoL were similar to two recent large randomised controlled trials in MPM^{25 26} suggesting validity of our findings. Finally, we have performed a *post hoc* analysis of those who died within 24 weeks of randomisation vs. those alive at 24 weeks; this demonstrated a lower baseline score in those who died, but no significant between group difference (mean GHS QLQ-C30 score (SD) early SPC vs. standard care: 38.9 (30.6) vs. 46.4 (21.4); $p=0.25$). Overall, we consider that the study result is a true negative.

The results of this study appear to be different to other similar reports examining early SPC in differing cancer types.¹³⁻²⁰ Aside from differing study designs, the RESPECT-Meso study has examined a different disease in a different healthcare system compared to other studies. It is also possible that our study has recruited participants too early in the disease trajectory for the intervention to be useful (although the *post hoc* analysis above does not support this supposition). The inclusion criteria of the study included the requirement for an ECOG performance status of 0 or 1 which means the study recruited a relatively well population. The inclusion of participants with a performance score of 2 would have led to a much higher drop out (by death) before the primary outcome, and the potential for the study being underpowered. Despite the requirement for a good performance status, at the time of randomisation 77.0% of participants reported dyspnoea and 57.4% chest pain. At least one cycle of chemotherapy was completed in 59.2% of participants, suggesting that approximately one third of the study population had contraindications and/or comorbidities precluding systemic cytotoxic therapy. The median survival of the whole study population was 54.6 weeks, suggesting that despite a good

performance status at recruitment, many participants were symptomatic at baseline and deteriorated quickly.

The results for main carers are similar as for the participants. There is no demonstrable difference in QoL and an isolated signal of a lower anxiety/depression score at 24 weeks after randomisation, favouring the intervention arm. There is, however, a clear indicator of an increased overall satisfaction with care for the carers in the early regular SPC group. From the FAMCARE questionnaire, there was increased reported satisfaction with 'SPC's attention to patient's symptoms', 'emotional support to family members', 'how effectively SPC manages the patient's symptoms', the 'response to changes in symptoms' and 'emotional support provided to the patient by the SPC team'. SPC regards the patient as the centre of a family group, so that the assessment and management of carers' needs is recognized as integral to patient care; this may in part explain the observed increased carer satisfaction.

Rather than regular early SPC having little effect on HRQoL or mood, it is possible that the current provision of clinical care in the control arm is providing a good level of holistic cancer care. All recruiting centres in this study had senior specialist thoracic cancer and chemotherapy nurses. It is plausible therefore that in the early months after diagnosis, the level of physical, emotional and spiritual care provided to most patients with mesothelioma in these treating centres is meeting patients' needs, however, this study has not specifically tested this supposition. SPC should, however, continue to be involved when patients' pain, symptoms, psychological/spiritual or advance care planning needs are no longer met by their respiratory or oncological teams; that 34.5% of patients in the control arm had been referred to SPC by week 24 appears to confirm this. Future studies might include specific pain and symptom outcome measures and/or examine which patients, what levels and when in their disease trajectory patients will most benefit from referral to SPC. Before understanding further the possible role(s) of early SPC integrated into oncological care it may be useful to better understand and delineate the current aspects of general palliative care already being provided as standard care in many treating centres. In addition, the crucial aspect of direct and indirect healthcare associated costs for providers and individuals must be analysed when assessing the utility of a new intervention. Given the results of the primary and secondary outcomes in this study, the pre-specified formal healthcare economic evaluation was not performed as originally stated in the protocol.²¹

Potential limitations of this study include a high failure rate of screening (predominantly from refusal and not fitting eligibility criteria). Post-surgery and participants who had already started systemic chemotherapy were excluded as they were likely to have very different health needs and quality of life. The exclusion of ECOG PS 2 participants potentially reduces the generalizability of the study, although in the UK and Western Australia between 67-80% of MPM patients present with an ECOG PS of 0-1.^{5 31} Furthermore, the uniformity of the SPC intervention provided across multiple sites may have varied after the initial standardized baseline assessment, but the nature of palliative care is inherently bespoke to the patients' (and families') needs. Finally, while this was a multicentre study, 20.7% of recruitment was from a tertiary cancer centre for Western Australia, however, pre-specified sub-group analysis did not demonstrate any difference in HRQoL measurements between the Australian and UK sites and the provision of both standard and SPC care is similar between the UK and Australia.

In conclusion, our data do not support the routine early referral of good performance status patients with newly diagnosed malignant pleural mesothelioma to SPC services, provided there is specialist follow up and good access to SPC when required. The current practice of referral to SPC based on clinical judgment of the treating physician and MDT from symptom burden and perceived need should continue. The perceived increased carer satisfaction with SPC teams is noteworthy, but this finding alone is unlikely to influence widespread provision of healthcare services in this context.

Acknowledgements

RESPECT-Meso investigators:

Andrew Bateman

Melissa Dobson

Richard Hopgood

Samuel King

Angela Morgan

Stephen Morris

Alice Mortlock

Neal Navani

Anna Nowak

Michael Peake

Mark Roberts

Lynne Squibb

Paul Taylor

Author Contributions

Fraser Brims - study conception, study design, data collection, analysis, interpretation, writing

Sam Gunatilake - study design, data collection

Iain Lawrie - study design, data collection, analysis, interpretation, literature search

Laura Marshall - study design, study conduct, data collection

Carole Fogg - study design and conduct

Cathy Qi - statistical analysis

Lorraine Creech – recruitment and data collection

Nicola Holtom - recruitment and data collection

Stephanie Killick - recruitment and data collection

Bernard Yung - recruitment and data collection

David Cooper - recruitment and data collection

Peter Cook - recruitment and data collection

Elizabeth Fuller - recruitment and data collection

Julie Walther - recruitment and data collection

Claire Plunkett - recruitment and data collection

Andrew Bates - recruitment and data collection

Carolyn Mackinlay - recruitment and data collection

Anil Tandon - recruitment and data collection

Louise Staddon - recruitment and data collection

Nick Maskell - study design, data collection, analysis, interpretation

Karen Forbes - study design, analysis, interpretation

Stephen Gerry - statistical analysis

Anoop Chauhan - study design, data collection, analysis, interpretation, writing

Conflicts of interest disclosures

The authors have no relevant conflicts of interest to declare

Funding

British Lung Foundation and Australian Communities Grant

Role of the funding source

The British Lung Foundation and the Australian Communities Foundation had no role in the study design, data collection, data analysis, data interpretation, or writing of the report. The corresponding author had full access to all the data in the study and had final responsibility for the decision to submit for publication.

REFERENCES

1. Finn RS, Brims FJ, Gandhi A, et al. Postmortem findings of malignant pleural mesothelioma: a two-center study of 318 patients. *Chest* 2012;142(5):1267-73. doi: 10.1378/chest.11-3204
2. Delgermaa V, Takahashi K, Park EK, et al. Global mesothelioma deaths reported to the World Health Organization between 1994 and 2008. *B World Health Organ* 2011;89(10):716-24. doi: Doi 10.2471/Blt.11.086678
3. Hollen PJ, Gralla RJ, Liepa AM, et al. Adapting the Lung Cancer Symptom Scale (LCSS) to mesothelioma: using the LCSS-Meso conceptual model for validation. *Cancer* 2004;101(3):587-95.
4. Nowak AK, Stockler MR, Byrne MJ. Assessing quality of life during chemotherapy for pleural mesothelioma: feasibility, validity, and results of using the European Organization for Research and Treatment of Cancer Core Quality of Life Questionnaire and Lung Cancer Module. *J Clin Oncol* 2004;22(15):3172-80.
5. Brims FJ, Meniawy TM, Duffus I, et al. A Novel Clinical Prediction Model for Prognosis in Malignant Pleural Mesothelioma Using Decision Tree Analysis. *J Thorac Oncol* 2016;11(4):573-82. doi: 10.1016/j.jtho.2015.12.108
6. HSE. Mesothelioma in Great Britain: Health and safety Executive, 2017.
7. Musk ABW, de Klerk N, Brims FJ. Mesothelioma in Australia: a review. *The Medical journal of Australia* 2017;207(10):449-52. [published Online First: 2017/11/14]
8. Vogelzang NJ, Rusthoven JJ, Symanowski J, et al. Phase III study of pemetrexed in combination with cisplatin versus cisplatin alone in patients with malignant pleural mesothelioma. *J Clin Oncol* 2003;21(14):2636-44. doi: 10.1200/JCO.2003.11.136
JCO.2003.11.136 [pii] [published Online First: 2003/07/16]
9. Alley EW, Lopez J, Santoro A, et al. Clinical safety and activity of pembrolizumab in patients with malignant pleural mesothelioma (KEYNOTE-028): preliminary results from a non-randomised, open-label, phase 1b trial. *The lancet oncology* 2017;18(5):623-30. doi: 10.1016/S1470-2045(17)30169-9 [published Online First: 2017/03/16]
10. Lee YC. Surgical resection of mesothelioma: an evidence-free practice. *Lancet* 2014;384(9948):1080-1. doi: 10.1016/S0140-6736(14)60795-9
11. Gynels M, Higginson I, Rajasekaran M, et al. NICE Guidance on cancer services. Improving supportive and Palliative Care for adults with cancer - Research Evidence. London: National Institute of Clinical Excellence, 2004.
12. Haun MW, Estel S, Rucker G, et al. Early palliative care for adults with advanced cancer. *Cochrane Database Syst Rev* 2017;6:CD011129. doi: 10.1002/14651858.CD011129.pub2 [published Online First: 2017/06/13]
13. Bakitas M, Lyons KD, Hegel MT, et al. Effects of a palliative care intervention on clinical outcomes in patients with advanced cancer: the Project ENABLE II randomized controlled trial. *JAMA* 2009;302(7):741-9. doi: 10.1001/jama.2009.1198 [published Online First: 2009/08/20]
14. Bakitas MA, Tosteson TD, Li Z, et al. Early Versus Delayed Initiation of Concurrent Palliative Oncology Care: Patient Outcomes in the ENABLE III Randomized Controlled Trial. *J Clin Oncol* 2015;33(13):1438-45. doi: 10.1200/JCO.2014.58.6362 [published Online First: 2015/03/25]

15. McCorkle R, Jeon S, Ercolano E, et al. An Advanced Practice Nurse Coordinated Multidisciplinary Intervention for Patients with Late-Stage Cancer: A Cluster Randomized Trial. *J Palliat Med* 2015;18(11):962-9. doi: 10.1089/jpm.2015.0113 [published Online First: 2015/08/26]
16. Tattersall M, Martin A, Devine R, et al. Early Contact with Palliative Care Services: A Randomized Trial in Patients with Newly Detected Incurable Metastatic Cancer. *Palliative Care & Medicine* 2014;4(4):170. doi: doi:10.4172/2165-7386.1000170
17. Zimmermann C, Swami N, Krzyzanowska M, et al. Early palliative care for patients with advanced cancer: a cluster-randomised controlled trial. *Lancet* 2014;383(9930):1721-30. doi: 10.1016/S0140-6736(13)62416-2
18. Temel JS, Greer JA, Muzikansky A, et al. Early palliative care for patients with metastatic non-small-cell lung cancer. *The New England journal of medicine* 2010;363(8):733-42.
19. Maltoni M, Scarpi E, Dall'Agata M, et al. Systematic versus on-demand early palliative care: results from a multicentre, randomised clinical trial. *European journal of cancer* 2016;65:61-8. doi: 10.1016/j.ejca.2016.06.007 [published Online First: 2016/07/30]
20. Vanbutsele G, Pardon K, Van Belle S, et al. Effect of early and systematic integration of palliative care in patients with advanced cancer: a randomised controlled trial. *The lancet oncology* 2018;19(3):394-404. doi: 10.1016/S1470-2045(18)30060-3 [published Online First: 2018/02/07]
21. Gunatilake S, Brims FJ, Fogg C, et al. A multicentre non-blinded randomised controlled trial to assess the impact of regular early specialist symptom control treatment on quality of life in malignant mesothelioma (RESPECT-MESO): study protocol for a randomised controlled trial. *Trials* 2014;15:367. doi: 10.1186/1745-6215-15-367
22. Lidstone V, Butters E, Seed PT, et al. Symptoms and concerns amongst cancer outpatients: identifying the need for specialist palliative care. *Palliative medicine* 2003;17(7):588-95. [published Online First: 2003/11/05]
23. Watanabe SM, Nekolaichuk C, Beaumont C, et al. A Multicenter Study Comparing Two Numerical Versions of the Edmonton Symptom Assessment System in Palliative Care Patients. *J Pain Symptom Manag* 2011;41(2):456-68. doi: DOI 10.1016/j.jpainsymman.2010.04.020
24. Fayers P, Aaronson N, Bjordal K, et al. The EORTC QLQ-C-30 Scoring Manual (3rd Edition). Brussels: European Organisation for Research and Treatment of Cancer, 2001.
25. Zalcman G, Mazieres J, Margery J, et al. Bevacizumab for newly diagnosed pleural mesothelioma in the Mesothelioma Avastin Cisplatin Pemetrexed Study (MAPS): a randomised, controlled, open-label, phase 3 trial. *Lancet* 2016;387(10026):1405-14. doi: 10.1016/S0140-6736(15)01238-6 [published Online First: 2016/01/01]
26. Clive AO, Taylor H, Dobson L, et al. Prophylactic radiotherapy for the prevention of procedure-tract metastases after surgical and large-bore pleural procedures in malignant pleural mesothelioma (SMART): a multicentre, open-label, phase 3, randomised controlled trial. *The lancet oncology* 2016;17(8):1094-104. doi: 10.1016/S1470-2045(16)30095-X [published Online First: 2016/06/28]
27. Aoun S, Bird S, Kristjanson LJ, et al. Reliability testing of the FAMCARE-2 scale: measuring family carer satisfaction with palliative care. *Palliative medicine* 2010;24(7):674-81. doi: 0269216310373166 [pii] 10.1177/0269216310373166 [published Online First: 2010/07/14]

28. Pevalin DJ. Multiple applications of the GHQ-12 in a general population sample: an investigation of long-term retest effects. *Soc Psychiatry Psychiatr Epidemiol* 2000;35(11):508-12. [published Online First: 2001/02/24]
29. Crowther MJ, Abrams KR, Lambert PC. Flexible parametric joint modelling of longitudinal and survival data. *Stat Med* 2012;31(30):4456-71. doi: 10.1002/sim.5644 [published Online First: 2012/10/06]
30. Rusch VW, Giroux D, Kennedy C, et al. Initial analysis of the international association for the study of lung cancer mesothelioma database. *J Thorac Oncol* 2012;7(11):1631-9. doi: 10.1097/JTO.0b013e31826915f1 [published Online First: 2012/10/17]
31. RCP. National Lung Cancer Audit: Pleural mesothelioma report 2016 (for the audit period 2014). London: Royal College of Physicians, 2016.

Tables

Table 1. Inclusion and exclusion criteria for the RESPECT-Meso study

Inclusion criteria
histological or cytological confirmation of MPM
European Cooperative Oncology Group (ECOG) Performance Score (PS) of 0 to 1 (0 indicating the patient is asymptomatic, 1 indicating some symptoms but ambulatory)
diagnosis of MPM received within the last six weeks
participants were able to provide informed consent in English and comply with trial procedures
Exclusion criteria
another known malignancy within five years (excluding localised squamous cell carcinoma of the skin, cervical intraepithelial neoplasia, grade III and low-grade prostate cancer (Gleason score <5, with no metastases))
significant morbidity which might unduly confound or influence HRQoL
a symptom burden sufficient to require referral to SPC at the time of diagnosis
concurrent, or less than three months since participation in another clinical trial that may affect HRQoL
surgery for MPM including cytoreductive, tumour de-bulking, radical decortication or extrapleural pneumonectomy (Video Assisted Thoracoscopic Surgery (VATS) or 'mini' thoracotomy for pleurodesis and diagnosis attempts were permissible)
chemotherapy for MPM initiated prior to consent
a significant history of depression/anxiety/psychiatric illness requiring specialist hospital care within the last twelve months

Table 2. Baseline characteristics of study participants.

	Early Specialist Palliative Care (n=87)		Standard Care (n=87)	
	n=		n=	
Age median (LQ, UQ)	87	72.1 (66.7, 77.7)	87	72.8 (69.0, 78.9)
Gender Male (%)	87	67 (77.0)	87	72 (82.8)
Neutrophil to Lymphocyte Ratio Median (LQ, UQ)	87	3.6 (2.7, 5.3)	86	4.1 (2.9, 7.4)
Co-morbidities Yes (%)				
Underlying respiratory disease	87	12 (13.8)	87	9 (10.3)
Cardiac failure	87	0 (0.0)	87	0 (0.0)
Ischaemic heart disease	87	8 (9.2)	87	9 (10.3)
Chronic renal impairment	87	2 (2.3)	87	1 (1.2)
Diabetes	87	9 (10.3)	87	7 (8.1)
Other	87	19 (21.8)	87	28 (32.2)
Designated carer Yes (%)	87	73 (83.9)	87	72 (82.8)
Previous treatment received Yes (%)				
Cordotomy	87	1 (1.2)	87	0 (0.0)
Nerve block	87	0 (0.0)	87	0 (0.0)
Radiotherapy	87	1 (1.2)	87	1 (1.2)
Symptoms at baseline Yes (%)				
Suffers pain	87	54 (62.1)	87	46 (52.9)
Pain due to mesothelioma	54	27 (50.0)	46	28 (60.9)
Analgesia use	87	55 (63.2)	87	56 (64.4)
Breathlessness	77	26 (33.8)	73	25 (34.2)
Fatigue	76	29 (38.2)	72	27 (37.5)
Pleural procedures Yes (%)	87	67 (77.0)	87	69 (79.3)
Therapeutic tap	67	26 (38.8)	69	28 (40.6)
Chest Drain	67	19 (28.4)	69	20 (29.0)
Chest Drain and pleurodesis	67	21 (31.3)	69	16 (23.2)
Indwelling pleural catheter	67	7 (10.4)	69	12 (17.4)
Medical thoracoscopy	67	26 (38.8)	69	27 (39.1)
Video assisted thoracoscopic surgery (VATS)	67	28 (41.8)	69	21 (30.4)
Mini thoracotomy	67	0 (0.0)	69	1 (1.4)
IASLC radiological stage	45		53	
1		15 (31.3)		20 (36.4)
2		3 (6.3)		8 (14.5)
3		16 (33.3)		16 (29.1)
4		14 (29.2)		11 (20.0)
Minimisation factors				
Plan for chemotherapy Yes (%)	87	47 (54.0)	86	45 (52.3)
ECOG performance status	87		87	
0		34 (39.1)		32 (36.8)
1		53 (60.9)		55 (63.2)

	Early Specialist Palliative Care (n=87)		Standard Care (n=87)	
	n=		n=	
Histological subtype <i>Non-Epithelioid/Epithelioid</i> (%Non-Epithelioid/Epithelioid)	87	19/68 (21.8/78.2)	87	19/68 (21.8/78.2)

UQ = upper quartile; LQ = lower quartile; IALSC = International Association for the Study of Lung Cancer

Table 3. Participant-reported outcome measures at 12 and 24 weeks.

	Early Specialist palliative care		Control		Mean Difference adjusted for baseline (95% CI)	p value
	n=	Mean score (SD)	n=	Mean score (SD)		
EORTC QLQ-C30 GHS						
at 12 weeks (primary outcome)	75	60.2 (23.6)	73	59.5 (21.2)	1.8 (-4.9 to 8.5)	0.59
at 24 weeks	60	61.3 (20.7)	65	63.7 (19.8)	-2.0 (-8.6 to 4.6)	0.54
Using a linear regression model, adjusting for minimisation variables, at 12 weeks	75	60.2 (23.6)	72	59.6 (21.3)	2.2 (-4.8 to 9.3)	0.50
Using mixed effects linear regression modelling at 12 weeks	75	60.2 (23.6)	73	59.6 (21.3)	2.2 (-4.8 to 9.3)	0.50
Per protocol analysis (12 weeks)	41	59.1 (21.2)	72	60.2 (22.8)	1.6 (-6.3 to 9.6)	0.68
Depression / anxiety: GHQ-12 scores						
12 weeks	74	2.2 (3.0)	69	2.6 (3.2)	-0.6 (-1.5 to 0.4)	0.23
24 weeks	57	1.8 (2.5)	64	2.1 (2.5)	-0.4 (-1.2 to 0.4)	0.27
Median survival (95% CI)	87	50.0 (42.4 to 69.0)	87	54.7 (46.4 to 85.4)		0.50*

*log rank test. SD = standard deviation; CI = confidence interval

Table 4. Carer reported outcome measures at 12 and 24 weeks after randomisation and 24 weeks post-bereavement.

	Early Specialist palliative care		Control		Mean Difference adjusted for baseline (95% CI)	p value
	n=	Mean score (SD)	n=	Mean score (SD)		
SF-36: Physical component						
12 weeks	59	53.4 (9.7)	49	51.8 (9.2)	1.8 (-0.7 to 4.3)	0.16
24 weeks	45	52.6 (10.0)	42	50.7 (8.8)	1.3 (-1.7 to 4.4)	0.37
24 weeks post bereavement	14	51.8 (11.3)	14	54.2 (7.5)	-3.6 (-8.9 to 1.7)	0.15
SF-36: Mental component						
12 weeks	59	43.7 (12.4)	49	45.1 (10.6)	0.5 (-2.8 to 3.9)	0.75
24 weeks	45	46.3 (9.8)	42	45.7 (11.8)	1.0 (-3.0 to 4.9)	0.63
24 weeks post bereavement	14	41.1 (11.7)	14	42.9 (11.7)	0.4 (-6.8 to 7.6)	0.90
GHQ-12						
12 weeks	63	3.6 (3.4)	57	3.4 (3.1)	-0.3 (-1.2 to 0.6)	0.50
24 weeks	44	2.5 (3.3)	51	3.7 (3.8)	-1.7 (-2.9 to -0.4)	0.01
24 weeks post bereavement	16	4.2 (3.7)	17	4.1 (4.1)	0.4 (-1.7 to 2.5)	0.67
FAMCARE-2						
12 weeks	63	78.5 (8.9)	51	74.5 (9.0)	4.1 (0.7 to 7.4)	0.02
24 weeks	45	79.5 (6.8)	43	73.3 (11.4)	6.1 (2.1 to 10.1)	0.003
24 weeks post bereavement	16	78.3 (7.6)	16	69.9 (15.9)	8.5 (-0.5 to 17.5)	0.05*

SD= standard deviation; CI = confidence intervals. * Mann-Whitney U-test p=0.12

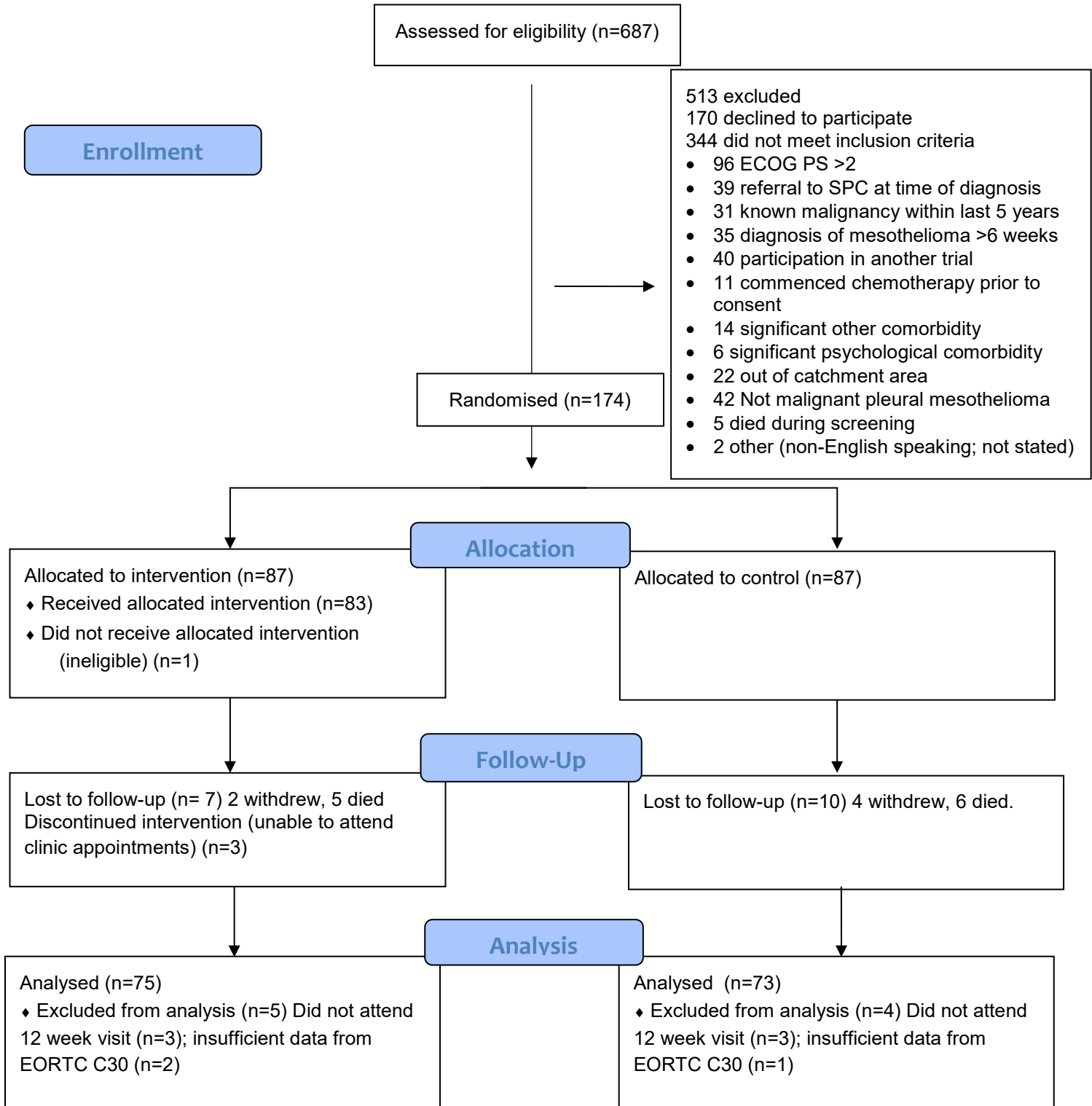
FIGURES

Figure 1. CONSORT study diagram

Figure 2. Mean \pm 95% CI of the mean global health status score (raw values) at all time points by treatment group. N(SC)=no. of available GHS scores in the standard care arm; N(SPC)=no. of available GHS scores in the specialist palliative care (SPC) arm



RESPECT-Meso CONSORT Flow Diagram



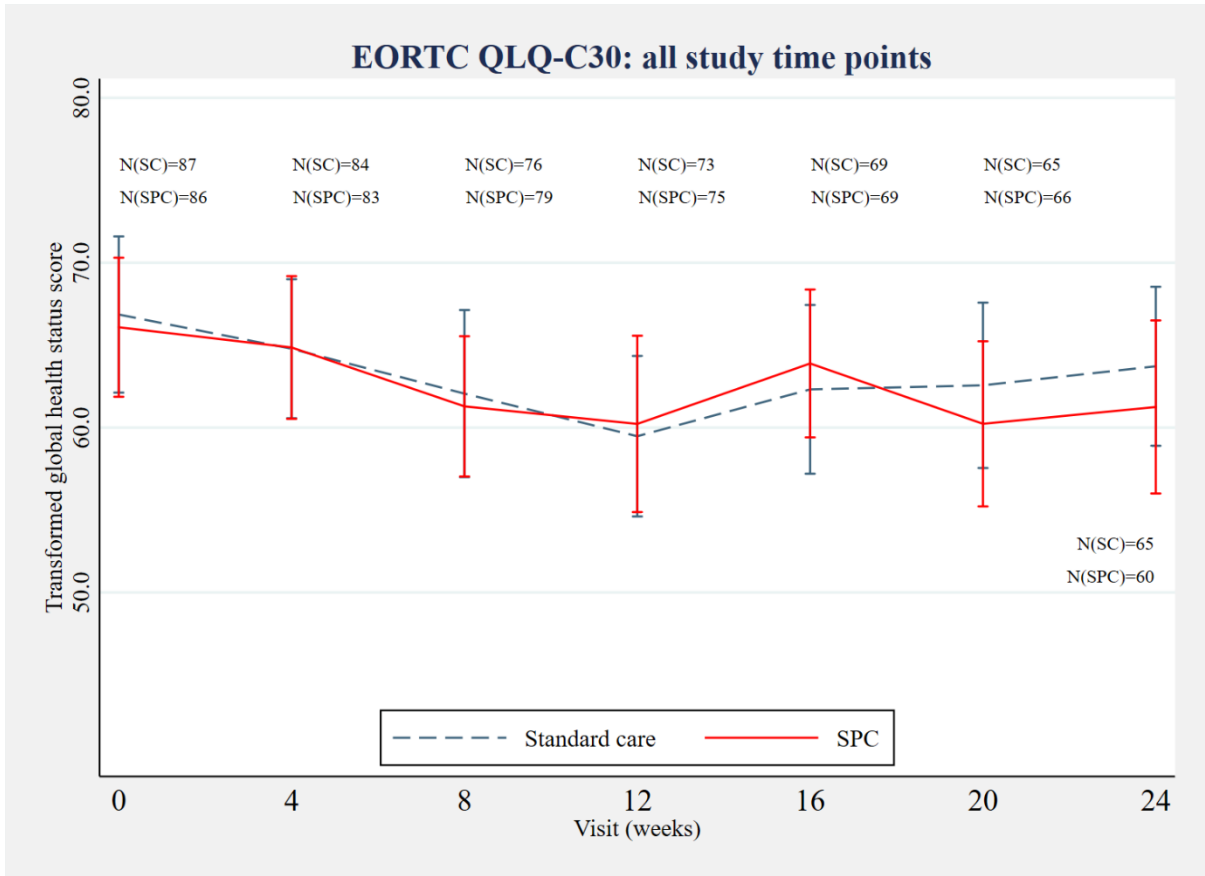


Figure 2